

THE DETROIT EDISON COMPANY

2000 SECOND AVENUE

DETROIT 26, MICHIGAN

October 8, 1969

Michigan Public Service Commission
Lansing 13, Michigan

Gentlemen:



The Detroit Edison Company, Detroit, Michigan, hereby makes application for authority to string the following wires over the tracks of the **Grand Trunk Western Railroad approximate 3 3/4 miles south of the Village of Milford, SW 1/4 of section 36, Milford Township, T-2N, R-7E Oakland County, Michigan.**

Span B-C

Three #000 ACSR - 13,200 volt wires and one #0 ACSR neutral wire over the tracks of the G.T.W.R.R. located in Old Plank Road approximately 1475' north of the centerline of Pontiac Trail.

The proposed wire crossing will be constructed in accordance with specifications of the Michigan Public Service Commission and the construction standards of The Detroit Edison Company, approved by the Michigan Public Service Commission on July 19, 1939, File ED 2-9.01.

- Enclosed is a waiver of hearing granted by the Railroad Company.
- Waiver of hearing by the Railroad Company is covered by blanket waiver.
- This application covers reconstruction of existing crossing and will cancel and supersede wire crossing permit No. _____ dated _____
- This is a new crossing.

Reference number of construction drawing is RX- 4028

Yours very truly,

Permit No. ED2-8-6428
Date 10-14-69
By J M Hoppe

I. W. Gamble
I. W. Gamble
Supervisor of Rights of Way
Properties and Rights of Way Dept.

Check in circle indicates statement applicable.

JVS/snc

RECORDED FROM AT THE NO. 34636
p95

THE DETROIT EDISON COMPANY

2000 SECOND AVENUE
DETROIT, MICHIGAN 48226

TO: **October 8, 1969**
Mr. J. S. Colton, Division Engineer
Grand Trunk Western Railroad Company
7350 Orleans Street
Detroit, Michigan 48211

Proposed Overhead Wire Crossing:

Three No. 000 ACSR 13,200 volt wires and one No. 0 ACSR neutral wire (Span B-C)

Specific Location

Located in Old Plank Road approximately 1475 feet North of the center line of Pontiac Trail, approximately 3-3/4 miles South of the Village of Milford.

R. R. Valuation Station _____ R. R. Mile Post _____

City/Village _____ Township **Milford, SW 1/4 of Section 36**

County **Oakland** Detroit Edison Plan Attached **EX-4028**

This is a New Crossing This is a Reconstruction of Existing Crossing _____

Previous Agreement Information (if any) Date _____ (R. R. Plan) _____

34636
9095

Blanket Waiver of Hearing Covers Waiver of Hearing Requested _____
(Waiver of Hearing to be mailed to applicant listed below)

All construction will be done in accordance with the rules and regulations of the Michigan Public Service Commission.

I. W. Gamble

**I. W. Gamble, Supervisor of Rights of Way
Properties and Rights of Way Department**

PROPOSED LINE CROSSING OVER GRAND TRUNK WESTERN R.R. EXISTING PERMIT NUMBER NEW CROSSING
 IN OLD PLANK RD APPROX. 1475' NORTH OF APPROX. 3.75 MI. SOUTH
CENTERLINE OF PONTIAC TRAIL OF THE VILLAGE OF MILFORD
 SECTION 36, SW 1/4 TOWNSHIP MILFORD MIL 29 T 2N R 7E COUNTY OAKLAND

NOTES
 MATERIALS SHALL BE AS NOTED IN THE DETROIT EDISON COMPANY'S GENERAL SPECIFICATIONS FOR OVERHEAD LINE CONSTRUCTION AT RAILROAD CROSSINGS DATED MARCH 1955.
 ACTUAL FIELD DIMENSIONS MAY VARY SOMEWHAT FROM THOSE SHOWN BUT THE REQUIREMENTS OF ORDER NO. 1679 OF MICHIGAN PUBLIC SERVICE COMMISSION AS REVISED JAN. 1, 1944, WILL BE COMPLIED WITH.

MINIMUM CLEARANCES

NEAREST POLE TO RAIL	SIDING	7 FT
	MAIN LINE	12 FT
WIRES OVER TRACKS	0 - 750 VOLTS	27 FT
	750 - 15,000 VOLTS	28 FT
	15,000 - 50,000 VOLTS	30 FT
WIRES OVER R R SIGNAL	0 - 750 VOLTS	2 FT
	750 - 8,700 VOLTS	4 FT
	8,700 - 50,000 VOLTS	6 FT

CONDUCTORS				POLES			
NUMBER	SIZE	KIND	VOLTAGE	LOCATION	LENGTH	CLASS	TYPE
SPAN B-C				A	50	4	WOOD
3	000	ALSR	13,200	B	50	3	"
1	0	ALSR	NEUTRAL	C	50	3	"
				D	55	3	"

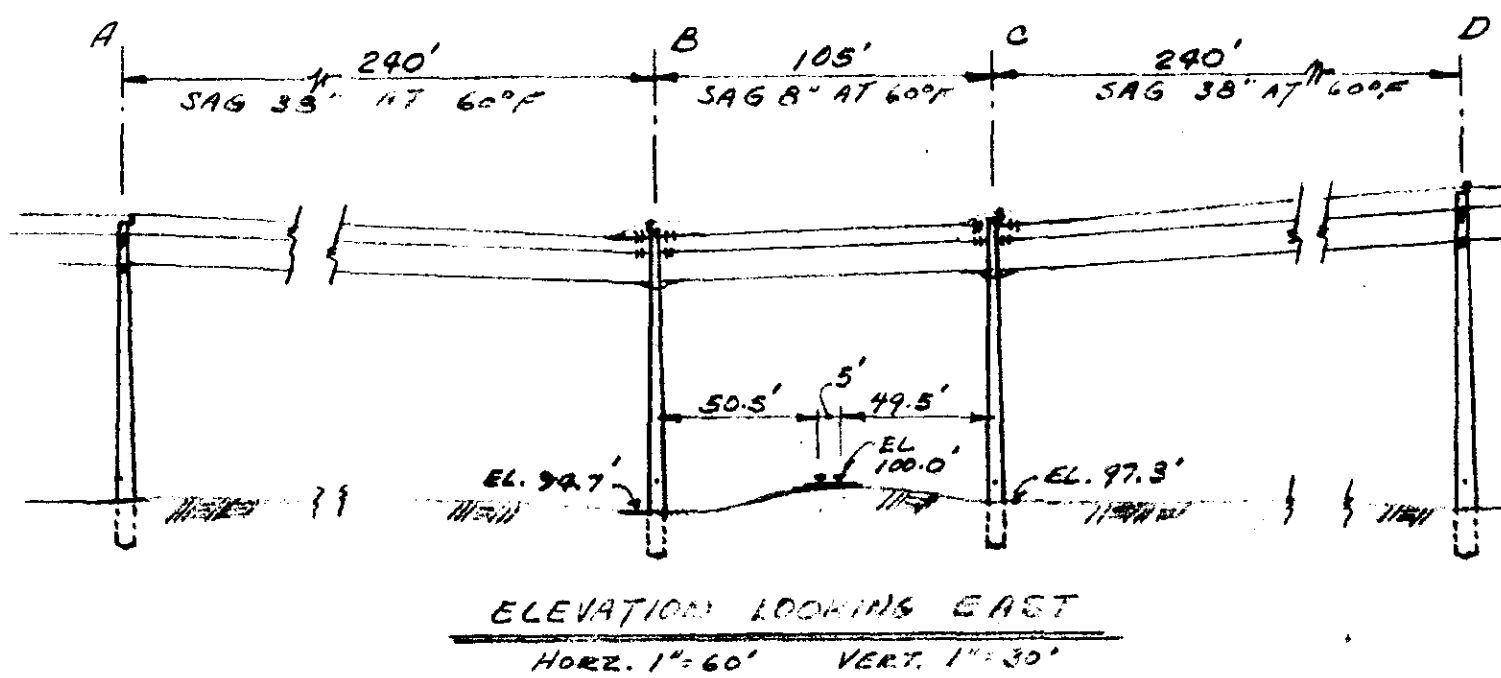
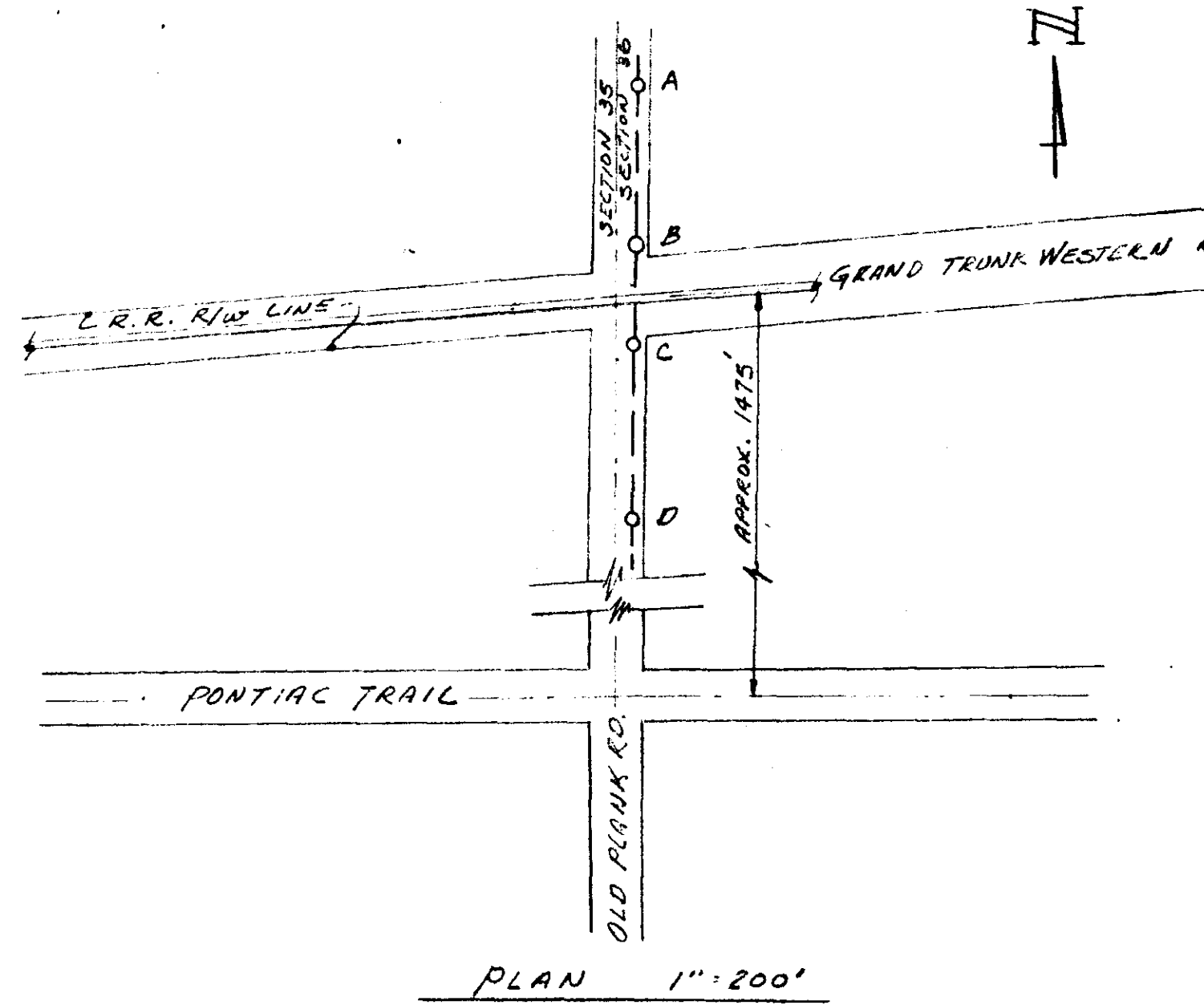
DESIGNED BY J. KELLY OVERHEAD LINES DEPT. PONT. SER. CENT.
 CHECKED BY H. GERBERT GENERAL ENGINEERING DEPT. DATE 10-3-69

SPAN	SPAN LENGTH	LOWEST CONDUCTOR OVER R.R. TRACKS	STRINGING SAG AT 60°F	HEIGHT OF LOWEST CONDUCTOR OVER	
				R.R. TRACKS	R.R. SIGNAL WIRE
B-C	105'	#0 NEUTRAL	8" - FINAL SAG 11.5"	29.7'	—

*See Revised Pontiac Planning R.R. Signal wires at crossing and clearance over trail
 10-30-69*

DESIGN DETAILS

POLE	13.2KV	NEUTRAL
A	13A30a	702d
B	13A3B	B60
C	13A3B	B60
D	13A30a	702d



PROPOSED LINE CROSSING OVER GRAND TRUNK WESTERN R.R. EXISTING PERMIT NUMBER NEW CROSSING
IN OLD PLANK RD APPROX. 1475' NORTH OF APPROX. 3.75 MI. SOUTH
CENTERLINE OF PONTIAC TRAIL OF THE VILLAGE OF MILFORD
SECTION 36, SW4 TOWNSHIP MILFORD MIL 29 T 2N R 7E COUNTY OAKLAND

CONDUCTORS				POLES			
NUMBER	SIZE	KIND	VOLTAGE	LOCATION	LENGTH	CLASS	TYPE
SPAN B-C				A	50	4	WOOD
3	000	ACSR	13,200	B	50	3	"
1	0	MSR	NEUTRAL	C	50	3	"
				D	55	3	"

MINIMUM CLEARANCES		
NEAREST POLE TO RAIL	SIDING	7 FT
	MAIN LINE	12 FT
WIRES OVER TRACKS	0-750 VOLTS	27 FT
	750-15,000 VOLTS	28 FT
	15,000-50,000 VOLTS	30 FT
WIRES OVER R R SIGNAL	0-750 VOLTS	2 FT
	750-8,700 VOLTS	4 FT
	8,700-50,000 VOLTS	6 FT

SPAN	SPAN LENGTH	LOWEST CONDUCTOR OVER R.R. TRACKS	STRINGING SAG AT 60°F	HEIGHT OF LOWEST CONDUCTOR OVER	
E C	105'	#0 NEUTRAL	8" - FINAL SAG 11.5"	R.R. TRACKS	R.R. SIGNAL WIRE
				29.7'	9'

NOTES
MATERIALS SHALL BE AS NOTED IN THE DETROIT EDISON COMPANY'S GENERAL SPECIFICATIONS FOR OVERHEAD LINE CONSTRUCTION AT RAILROAD CROSSINGS DATED MARCH 1955.
ACTUAL FIELD DIMENSIONS MAY VARY SOMEWHAT FROM THOSE SHOWN BUT THE REQUIREMENTS OF ORDER NO. 1679 OF MICHIGAN PUBLIC SERVICE COMMISSION AS REVISED JAN. 1, 1944, WILL BE COMPLIED WITH.

CHECKED BY H. GEFPERT GENERAL ENGINEERING DEPT. DATE 10-3-69
DESIGNED BY J. KELLY OVERHEAD LINES DEPT. PONT. SER. CENT.

DESIGN DETAILS		
POLE	13.2KV	NEUTRAL
A	13A30a	702d
B	13A3B	860
C	13A3B	860
D	13A30a	702d

