

REC'D
SEP 20 1924
H. B. GANTHORNE

RIGHT OF WAY FILE No. 4859

THIS AGREEMENT made this 14th day of September A.D. 1923, between the PERE MARQUETTE RAILWAY COMPANY, a Michigan corporation, hereinafter for convenience called the "Pere Marquette", and the DETROIT EDISON COMPANY, a Michigan corporation, hereinafter for a like convenience called the "second party".

WITNESSETH:

WHEREAS, the second party desires to erect, operate and maintain a transmission line, consisting of six (6) conductor cables and one (1) ground wire, all supported on steel towers, across the right of way and over the tracks of the Pere Marquette just south of Wixom, Michigan, the approximate location being at Location Stake No. 11006 plus 13, as indicated on the blue print attached hereto and made a part hereof, and has requested the Pere Marquette to grant it the right so to do.

NOW, THEREFORE, it is agreed as follows:

NOV 9 1924

The Pere Marquette grants to the said second party, as far as it may lawfully do so, the right to erect, operate and maintain said transmission line across its right of way and over its tracks at the point aforesaid, on the following terms and conditions:

1. That said second party shall pay all expenses attending the erection of said transmission line and shall likewise at its own expense maintain the same at all times hereafter in a thoroughly safe and proper condition.
2. That said transmission line, consisting of six (6) conductor cables and one (1) ground wire as aforesaid, may carry a voltage of 120,000 volts, and the lowest of said wires, at the point where the same shall pass over the right of way and tracks of the Pere Marquette, shall be at a height at all times of not less than 40 feet above the right of way and tracks of the Pere Marquette, and not less than 25 feet above the nearest telegraph line on the premises of the Pere Marquette Railway Company.
3. That no poles or anchors shall be located on Pere Marquette's right of way or premises in connection with said transmission line.
4. That second party shall obtain consent and authority from the Michigan Public Utilities Commission for the construction and maintenance of the transmission line as aforesaid, and shall at all times observe all requirements of public authority governing or respecting the same.
5. The second party shall at all times hereafter assume all liability, if any, for damage or injury to persons or property caused either wholly or in part by the installation, maintenance or existence of the transmission line covered by this grant upon the property of the Pere Marquette and also all liability, if any, for damage or injury to persons or property engaged in or about the installation or maintenance of said transmission line, whether caused by the engines, cars or trains of the Pere Marquette, or otherwise, and will indemnify and save the Pere Marquette, its successors and assigns, harmless therefrom. This agreement shall be binding upon the parties hereto and their respective successors and assigns.
6. That second party shall pay to the Pere Marquette at the time this agreement is executed, the sum of Ten (\$10.00) Dollars, the estimated cost of preparing this said agreement.
7. In case the Pere Marquette shall at any time hereafter desire to change the grade of its line, otherwise improve or change its facilities at

4859

the point where the said transmission line is located, or for any reason what-
ever desire that said transmission line be removed or its location changed, it
shall give the second party sixty (60) days' notice in writing, and second
party agrees that before the expiration of said sixty (60) days it will either
remove or change (whichever is desired by the Pere Marquette) the location of
said transmission line and restore the premises of the Pere Marquette to their
condition prior to installation of said transmission line.

IN WITNESS WHEREOF the parties hereto have executed this agreement
in duplicate the day and year first above written.

gma

P. M. APPROVAL	
<i>BHR</i>	Gen. Atty.
	Vice Pres. & Gen. Aud.
	Supt.
	Gen'l. Supt.
<i>HPB</i>	Ch. Eng.
	F. T. M.
	A. G. M.

PERE MARQUETTE RAILWAY COMPANY

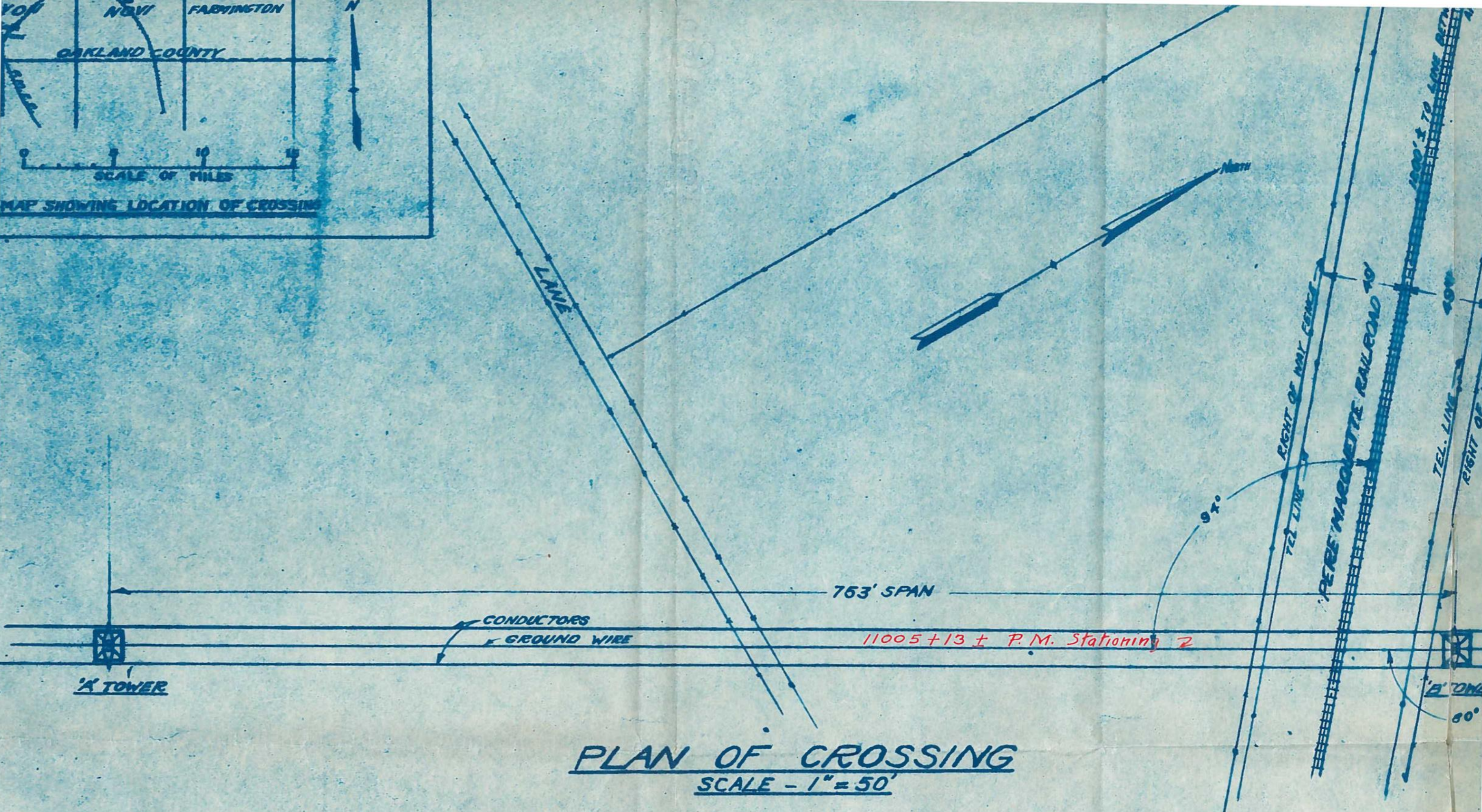
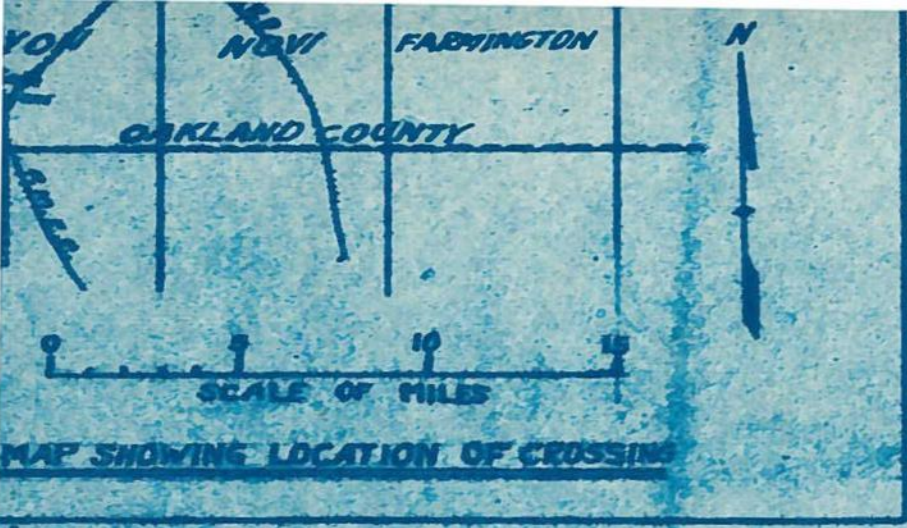
By *Frank H. Alfred*
Its President.

DETROIT EDISON COMPANY

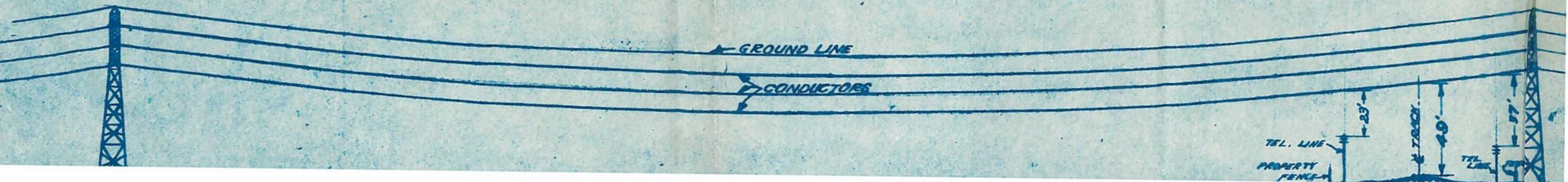
By *ac marshau*
Its Vice President

ok/SL

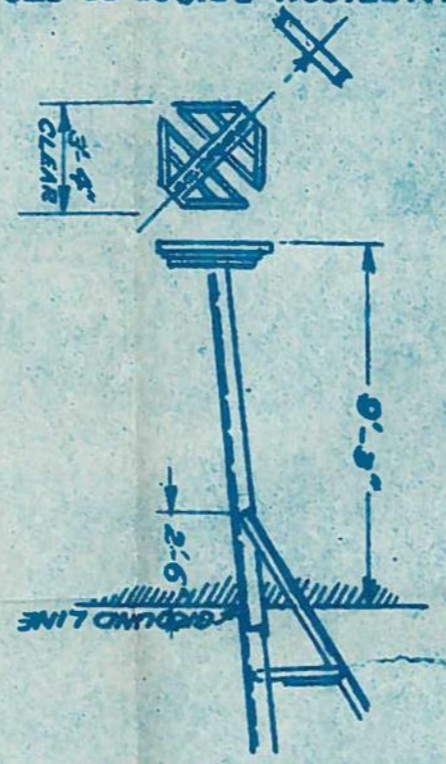
RECORDED RIGHT OF WAY NO. 4859



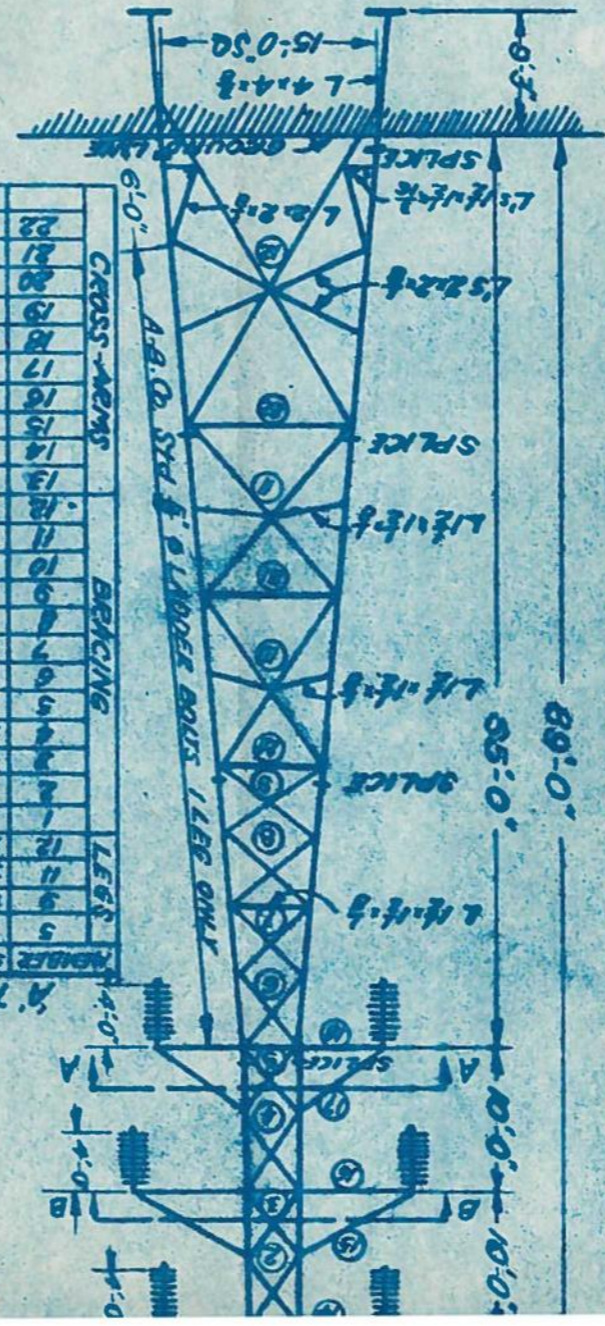
PLAN OF CROSSING
SCALE - 1" = 50'



TRANSMISSION LINE DATA
PURPOSE OF LINE - TRANSMISSION OF POWER
DURATION OF SERVICE - CONTINUOUS
MAX. VOLTAGE BETWEEN WIRES - 100,000 VOLTS
MAX. CURRENT TRANSMITTED - 800 AMPS.
FREQUENCY - 60 CYCLES
NO. AND GAGE OF WIRE - 36 - 7 WIRE STRAND
MATERIAL OF WIRE - COPPER
SOLID OR STRANDED - STRANDED
INSULATION - BARE
HARD OR SOFT DRAWN - HARD DRAWN
MAX. STRESS ON WIRES - 3950*
TYPE OF INSULATORS - ONE BRASS CO. SUSPENSION
FLASH OVER TEST DAY - FOR 9 IN. 450,000 VOLTS
FLASH OVER TEST WET - FOR 9 IN. 350,000 VOLTS
CATALOGUE NO. OF INSULATORS O.B. CO. 25680
NO. AND SIZE OF CROSS ARMS - SEE SKETCH
TYPE OF CONDUCTOR ATTACHMENT - SEE SKETCH
NO. OF WIRES TO BE ERECTED - 6
ULTIMATE NO. OF WIRES - 6
CLEARANCE AT MAXIMUM SAG OF LOWEST WIRE OVER TRACK - 49'
CLEARANCE AT MAXIMUM SAG OF LOWEST WIRE OVER EXISTING WIRES - 28'
NO. OF INSULATORS SUPPORTING CONDUCTORS OVER CROSSING - 2



A TOWER

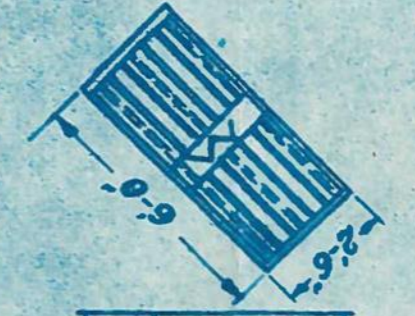


A TOWER

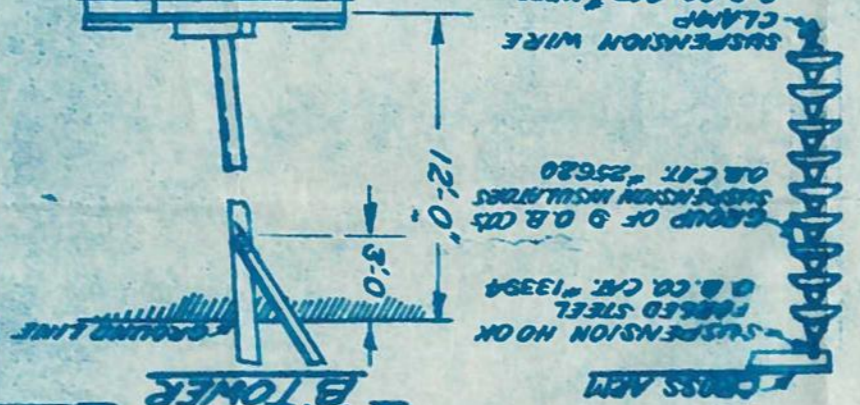
NUMBER	STRESS	MATERIAL
1	22.8	L2.1/2 x 1/2
2	22.8	L2.1/2 x 1/2
3	22.8	L2.1/2 x 1/2
4	22.8	L2.1/2 x 1/2
5	22.8	L2.1/2 x 1/2
6	22.8	L2.1/2 x 1/2
7	22.8	L2.1/2 x 1/2
8	22.8	L2.1/2 x 1/2
9	22.8	L2.1/2 x 1/2
10	22.8	L2.1/2 x 1/2
11	22.8	L2.1/2 x 1/2
12	22.8	L2.1/2 x 1/2
13	22.8	L2.1/2 x 1/2
14	22.8	L2.1/2 x 1/2
15	22.8	L2.1/2 x 1/2
16	22.8	L2.1/2 x 1/2
17	22.8	L2.1/2 x 1/2
18	22.8	L2.1/2 x 1/2
19	22.8	L2.1/2 x 1/2
20	22.8	L2.1/2 x 1/2
21	22.8	L2.1/2 x 1/2
22	22.8	L2.1/2 x 1/2

NUMBER	STRESS	MATERIAL
1	22.8	L2.1/2 x 1/2
2	22.8	L2.1/2 x 1/2
3	22.8	L2.1/2 x 1/2
4	22.8	L2.1/2 x 1/2
5	22.8	L2.1/2 x 1/2
6	22.8	L2.1/2 x 1/2
7	22.8	L2.1/2 x 1/2
8	22.8	L2.1/2 x 1/2
9	22.8	L2.1/2 x 1/2
10	22.8	L2.1/2 x 1/2
11	22.8	L2.1/2 x 1/2
12	22.8	L2.1/2 x 1/2
13	22.8	L2.1/2 x 1/2
14	22.8	L2.1/2 x 1/2
15	22.8	L2.1/2 x 1/2
16	22.8	L2.1/2 x 1/2
17	22.8	L2.1/2 x 1/2
18	22.8	L2.1/2 x 1/2
19	22.8	L2.1/2 x 1/2
20	22.8	L2.1/2 x 1/2
21	22.8	L2.1/2 x 1/2
22	22.8	L2.1/2 x 1/2

SHEAR ON BOLTS 13,600#
 BARRING 27,000#
 MATERIAL
 O.H. STEEL FOR BUILDINGS ACXN STR
 COATING
 MATERIAL INCLUDING BOLTS, GALVANIZED



SHOWING INSULATOR SUPPORT AT TOWERS



B TOWER

