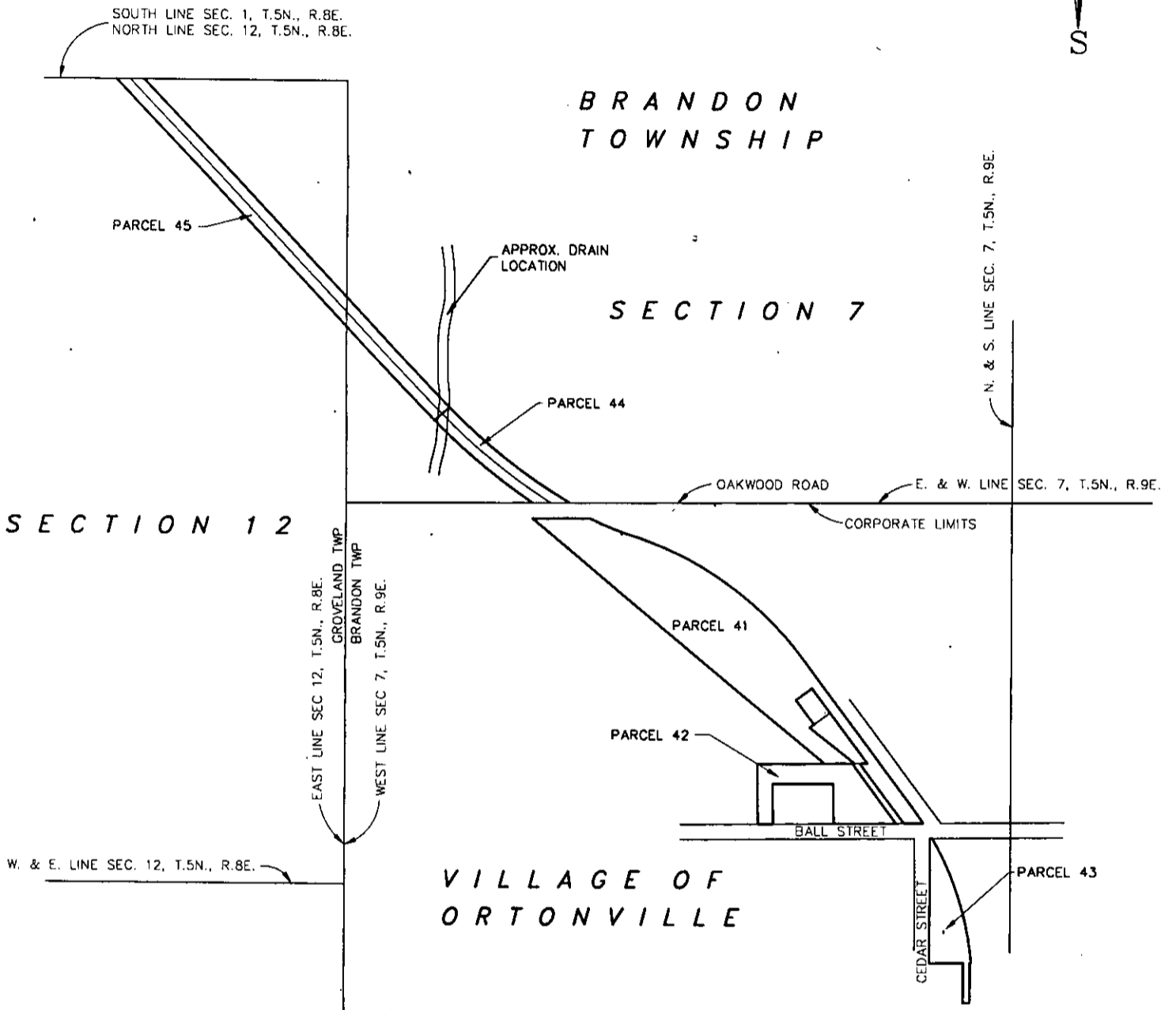


**RIGHT-OF-WAY CORRIDOR  
REAL ESTATE FILE NO. 1000-2A PART 4  
OXFORD-ORTONVILLE**



NOTE: ACREAGES ARE APPROXIMATE AS IT IS  
BASED UPON THE AVAILABLE RECORD INFORMATION.

PARCEL 41  
5.6 ACRES  
SOLD

PARCEL 42  
1.1 ACRES  
SOLD

PARCEL 43  
0.9 ACRES  
SOLD

PARCEL 44  
0.7 ACRES  
SOLD

PARCEL 45  
2.3 ACRES  
SOLD

**Detroit Edison**

Corporate Real Estate Services  
2310 WCB

TOTAL DETROIT EDISON  
PROPERTY REMAINING  
REAL ESTATE FILE 1000-2A4: 0 ACRES

1000-2A4.DWG

**McNEELY & LINCOLN**  
Associates, Inc.

CIVIL ENGINEERING & LAND SURVEYING  
(810) 349-4920  
459 E. CADY, NORTHVILLE, MICHIGAN, 48167

For DETROIT EDISON Date 1/12/95

Scale 1"=500' Drawn By TPP

Job No. 7653 Checked By WL