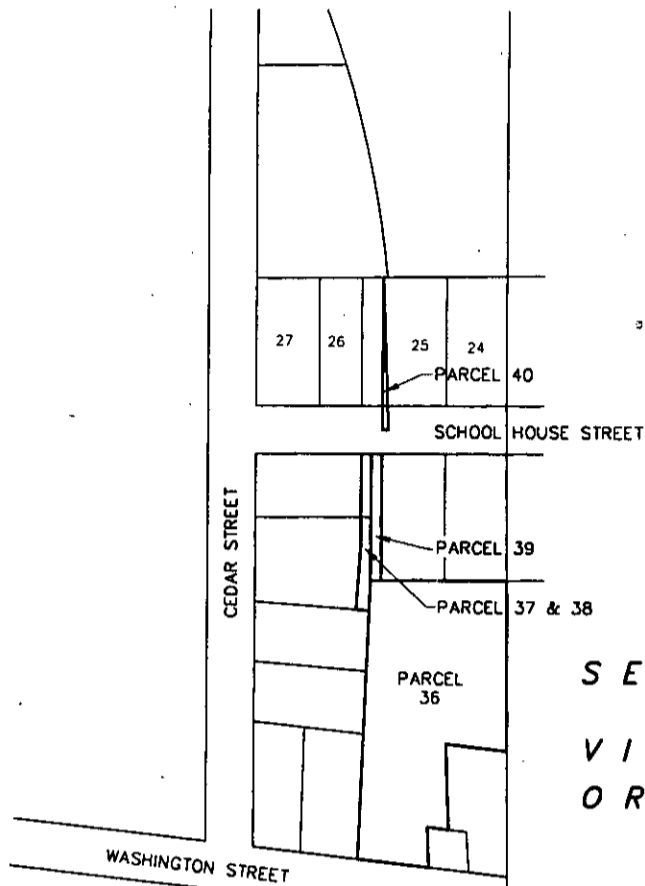


**RIGHT-OF-WAY CORRIDOR
REAL ESTATE FILE NO. 1000-2A PART 3
OXFORD-ORTONVILLE**



SECTION 7
VILLAGE OF
ORTONVILLE

SOUTH LINE SEC. 7, T.5N., R.9E.
NORTH LINE SEC. 18, T.5N., R.9E.

SECTION 18

SEE ITEMS O & S
OF REAL ESTATE
FILE 1000 2B PART 1

PARCEL 33
>0.1 ACRES
SOLD

PARCEL 34
2.6 ACRES
SOLD

PARCEL 35A
>0.1 ACRES
SOLD

PARCEL 35B
EASEMENT ONLY OVER SOUTH ST.
RIGHT-OF-WAY

PARCEL 36
0.8 ACRES
SOLD

PARCEL 37 & 38
>0.1 ACRES
SOLD

PARCEL 39
>0.1 ACRES
SOLD

PARCEL 40
>0.1 ACRES (NOT INCLUDING EASEMENT
OVER RIGHT-OF-WAY OF SCHOOL HOUSE ST)
SOLD

Detroit Edison

TOTAL DETROIT EDISON
PROPERTY REMAINING
REAL ESTATE FILE 1000-2A3: 0 ACRES

Corporate Real Estate Services
2310 WCB

NOTE: ACREAGES ARE APPROXIMATE AS IT IS
BASED UPON THE AVAILABLE RECORD INFORMATION. PAGE 1 OF 2
1000-2A3.DWG

McNEELY & LINCOLN
Associates, Inc.

CIVIL ENGINEERING & LAND SURVEYING
(810) 349-4920
459 E. CADY, NORTHVILLE, MICHIGAN, 48167

For DETROIT EDISON Date 1/13/95

Scale 1"=200' Drawn By TPP

Job No. 7653 Checked By MRD