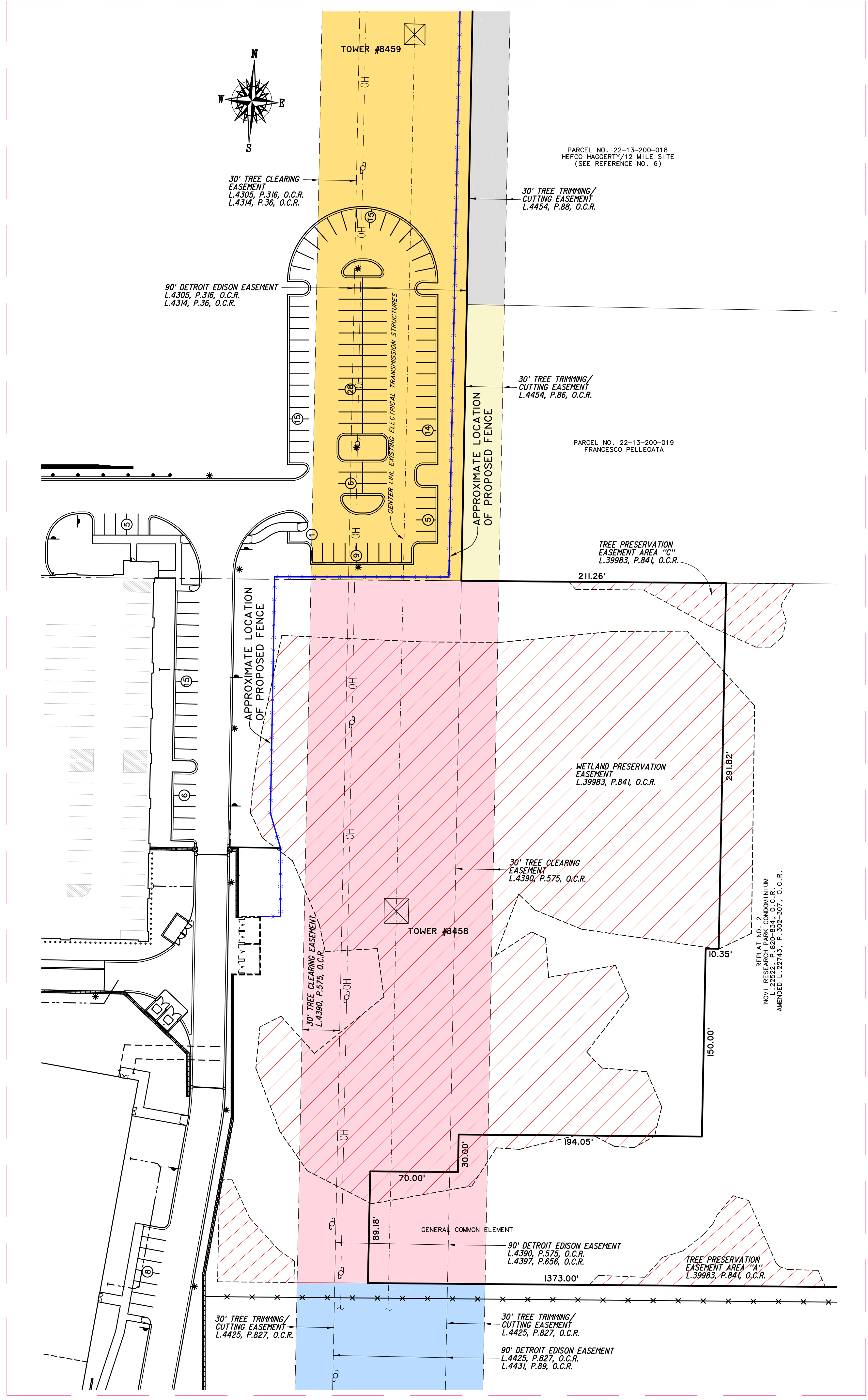


LEGEND	
	DETROIT EDISON TRANSMISSION LINE EASEMENT & TREE TRIMMING/CUTTING EASEMENT L.4425, P.827, & L. 4431, P.89, O.C.R.
	DETROIT EDISON TRANSMISSION LINE EASEMENT L.4390, P.575, & L. 4397, P.656, O.C.R.
	DETROIT EDISON TRANSMISSION LINE EASEMENT & TREE TRIMMING/CUTTING EASEMENT L.4305, P.316, & L. 4314, P.36, O.C.R.
	DETROIT EDISON TREE TRIMMING/CUTTING EASEMENT L.4454, P.86, O.C.R.
	DETROIT EDISON TREE TRIMMING/CUTTING EASEMENT L.4454, P.87, O.C.R.
	DETROIT EDISON TREE TRIMMING/CUTTING EASEMENT L.4454, P.88, O.C.R.
	DETROIT EDISON TRANSMISSION LINE EASEMENT L.4365, P.226, O.C.R.
	DETROIT EDISON TREE TRIMMING/CUTTING EASEMENT L.4454, P.84, O.C.R.
	PRESERVATION EASEMENT L.39983, P.841, O.C.R.
	UTILITY POLE
	OVERHEAD WIRES



NORTH 1/4 CORNER (L-5)
SECTION 13, T.1N., R.8E.
CITY OF NOVI, OAKLAND CO.

CENTER (L-6)
SECTION 13, T.1N., R.8E.
CITY OF NOVI, OAKLAND CO.

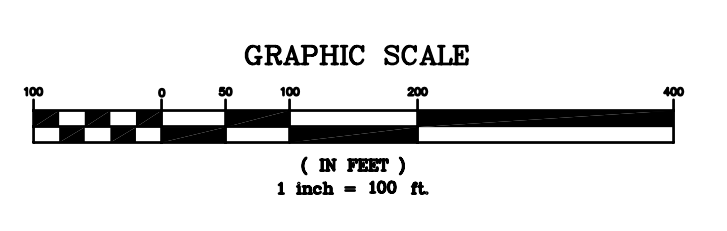
NORTH LINE SECTION 13

EAST 1/4 CORNER (M-5)
SECTION 13, T.1N., R.8E.
CITY OF NOVI, OAKLAND CO.

M-5 RIGHT-OF-WAY

PARCEL #1

HAGGERTY ROAD



DATE: 7/05/09	CLIENT: INTERNATIONAL TRANSMISSION COMPANY
DRAWN BY: MD, DP	27175 ENERGY WAY
CHECKED BY: MD	NOVI, MICHIGAN 48377
FILE NAME: 084227 Nov-Headquarters-Tree-Exhibit	
SCALE: 1"=150'	
PROJECT NO.: 8042.27	
FILE NAME: 084227 Nov-Headquarters-Tree-Exhibit	
SHEET 1 OF 1	

