

71625
RECORDED R/W FILE NO.

DISCLAIMER OF INTEREST IN A PLATTED EASEMENT

On June 27, 2002, for one dollar and other valuable consideration, Edison disclaims any interest in a certain private easement for public utilities ("Easement") created in a certain Plat, because Edison does not have any equipment in the Easement and does not plan to install any equipment in the Easement.

"Edison" is:

The Detroit Edison Company, a Michigan corporation, 2000 Second Avenue, Detroit, Michigan 48226

The "Easement":

- a) Located in Lots 1 & 2 of "Whysall Subdivision" of part of the SW ¼ of Section 14, T2N, R10E, City of Bloomfield Hills, Oakland County Michigan, is recorded in Liber 114 of Plats, Page 40, Oakland County Records.
- b) The Detroit Edison Company has 6' wide easement running in an east and west direction through Lots 1 & 2.
- c) The Detroit Edison Company releases it's rights, whatever they may be, in the 6' wide easement running in an east and west direction through Lots 1 & 2. (See attachment "A".)
- d) This disclaimer applies to Detroit Edison only, all other entities having an interest in this easement must disclaim their interests as well.

Witnessed by: (type or print name under signature)

The Detroit Edison Company

Elaine Clifford
 Elaine Clifford
Anjanette Spence
 Anjanette Spence

John M. Wisniewski
 John M. Wisniewski, Director
 Administration and Facilities Management

Acknowledged before me in Wayne County, Michigan, on June 27, 2002, by John M. Wisniewski, Director of Detroit Edison, a Michigan Corporation, for the corporation.

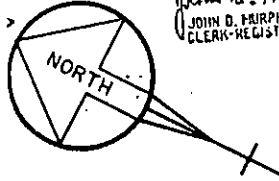
ANJANETTE SPENCE
 NOTARY PUBLIC WAYNE CO., MI
 Notary's Stamp MY COMMISSION EXPIRES Mar 9, 2005 Notary's Signature *Anjanette Spence*
 (Notary's name, county, and date commission expires)

Prepared by: Elaine Clifford, 2000 Second Ave., Suite 2310 WCB, Detroit, Michigan 48226
 Return to: Elaine Clifford, 2000 Second Ave., Suite 2310 WCB, Detroit, Michigan 48226.

Suber 114 pg. 40
1965 JUN 25 PM 12 25

"WHYSALL SUBDIVISION"

OF PART OF THE S.W. 1/4 OF SECTION 14, T2N, R10E, CITY OF BLOOMFIELD HILLS, OAKLAND COUNTY, MICHIGAN

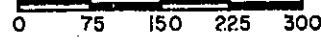


JOHN D. MURPHY
CLERK-REGISTER OF DEEDS

SCALE: 1 INCH = 150 FEET

EXAMINED AND APPROVED

Date June 2, 1965



Allison Green
ALLISON GREEN
ACTING AUDITOR GENERAL

By *Richard E. Lomax*
Richard E. Lomax *Plat Examiner

NOTES: ALL DIMENSIONS
ALL DIMENSIONS

WOODWARD AVE. (US-10)
200' Wide

DESCRIPTION

The land embraced in the annexed plat of "WHYSALL SUBDIVISION" OF PART OF THE S.W. 1/4 OF SECTION 14, T2N, R10E, CITY OF BLOOMFIELD HILLS, OAKLAND COUNTY, MICHIGAN is described as follows:

Commencing at the southwest corner post of Section 14, T2N, R10E, thence along the West line of said Section N0°11'30"E 287.82 feet to the point of beginning; thence N88°04'50"E 504.83 feet; thence N55°45'56"E 1515.21 feet to a point in the Westerly line of Woodward Ave. (U.S.10); thence N35°46'22"W 300.74 feet along the Westerly line of Woodward Ave. (U.S.10); thence S62°39'54"W 1784.50 feet; thence along the West line of Section 14 S0°44'27"E 293.87 feet to the point of beginning. This plat contains (10) lots, numbered 1 to 10 both inclusive.

SURVEYOR'S CERTIFICATE

I hereby certify that the plat hereon delineated is a correct one and that permanent metal monuments consisting of bars not less than one-half inch in diameter and 36 inches in length encased in concrete cylinders at least 4 inches in diameter and 36 inches in depth have been placed at points marked thus (o) as thereon shown at all angles in the boundaries of the land platted, at all the intersections of streets and at the intersections of streets with the boundaries of the plat as shown on said plat.

Prepared and Drafted by *David W. Hasse*
Registered Professional Engineer

727 Romeo Road
Rochester, Michigan

State of Michigan
County of Oakland

APPROVED June 17, 1965
DATE

MICHIGAN STATE HIGHWAY COMMISSION

Harvard C. Hill

On this 22
Public in and for
HORACE P. SHAW and
single man, known

ATTACHMENT "A"

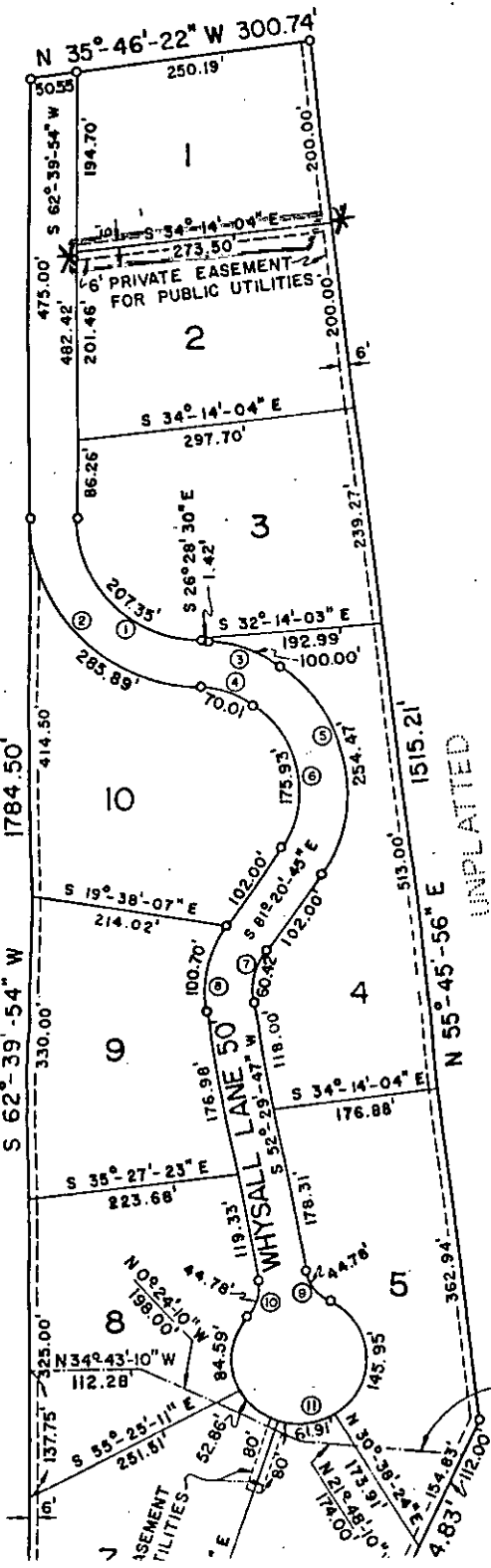
71625

RECORDED R/W FILE NO.

KNOW A
AND GR
man, a
AND LO.
HENRY J
secret
in the
to be l
1/4 OF
OAKLAND
on said
public
plat as
or for
perman
boundar
Signed
the pro
J
W

"Easements
of Oakland
sanitary s
dedicated
Oakland fo
of constr
and mainte
sewers".

OF 16' WIDE COUNTY OF
OAKLAND EASEMENT FOR
SANITARY SEWER
(L. 3766, P. 434)



LAW OFFICES
CARSON & POWELL, P.C.
300 PARK STREET, SUITE 265
BIRMINGHAM, MICHIGAN 48009

CHARLES J. CARSON

TELEPHONE (248) 594-9600

FACSIMILE
(248) 594-9700

May 9, 2001

Mr. Rodney Young
Detroit Edison Company
Detroit Distribution Planning
2000 Second Avenue
Room 430 SB
Detroit, MI 48226-1279

re: Lots 1 & 2, Whysall Subdivision
Bloomfield Hills, Oakland County, Michigan (the "Property")

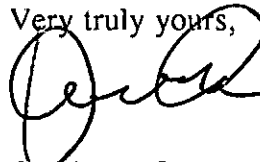
Dear Mr. Young:

I represent Tomy Development Company, LLC, the owner and developer of the Property. The Whysall Subdivision Plat (the "Plat") contains a six foot (6') Private Easement for Public Utilities (the "Easement") running along the Property line. For your convenience, I am enclosing a highlighted copy of the Plat.

My client seeks your approval and consent for the abandonment of the Easement in furtherance of its development of the Property.

My client and its development staff would be available should you need to consult with them. Should you have any questions, please telephone me.

Very truly yours,



Charles J. Carson

/eb
encl.

cc: Walter W. Tomy
William P. Hampton, Esq.

C. J. SQUIRES
MAY 17 2001

71625
RECORDED R/W FILE NO.



June 27, 2002

Mr. Charles J. Carson
Carson & Powell, P.C.
300 Park Street, Suite 265
Birmingham, MI 48009

Re: Disclaimer of Interest

Dear Mr. Carson:

Please find enclosed Edison's Disclaimer of Interest in a Platted Easement for property located in part of the SW ¼ of Section 14, City of Bloomfield Hills, Michigan Lots 1 & 2 of Whysall Subdivision.

If I can be of any further assistance, please call me at (313) 235-8313.

Thank you,

Elaine Clifford
Real Estate Associate

Enclosures

RECORDED R/W FILE NO. 71625