

**UNDERGROUND DISTRIBUTION EASEMENT (RIGHT OF WAY) NO. R-9211651-01  
PROJECT NAME - FOX CHASE SITE CONDO**

On April 12, 1993, for the consideration of system betterment, Grantor grants to Grantee a permanent underground distribution easement ("Right of Way") in, on and across a part of Grantor's Land called the "Right of Way Area".

**"Grantor" is:**

Distinctive Land, Inc., a Michigan Corporation, 31500 West 10 Mile Road, Farmington Hills, Michigan

**"Grantee" is:**

The Detroit Edison Company, a Michigan Corporation, 2000 Second Avenue, Detroit, Michigan 48226  
GTE North, Incorporated, a Wisconsin Corporation, 455 E. Ellis Road, Muskegon, Michigan 49443

**"Grantor's Land" is in White Lake Township, Oakland County, Michigan described as:**

SEE ATTACHED APPENDIX "A" - SIDWELL NO: (12-06-426-005) 12-06-427-000 End

**The "Right of Way Area" is a part of Grantor's Land and is described as:**

The exact location of said easements shall be shown on a drawing to be recorded 90 days after construction. The right of way is ten (10) feet in width.

- Purpose:** The purpose of this Right of Way is to construct, reconstruct, modify, add to, operate and maintain utility line facilities consisting of poles, guys, anchors, wires, manholes, conduits, pipes, cables, transformers and accessories.
- Access:** Grantee has the right of access to and from the Right of Way Area.
- Buildings or other Permanent Structures:** No buildings or other permanent structures shall be placed in the Right of Way Area without Grantee's prior written consent.
- Excavation:** As required by Public Act 53 of 1974, MISS DIG must be called on 1-800-482-7171 before anyone excavates in the Right of Way Area.
- Trees, Bushes, Branches Roots, Structures and Fences:** Grantee may trim, cut down, remove or otherwise control any trees, bushes, branches and roots in the Right of Way Area (or that could grow into the Right of Way Area) and remove structures and fences in the Right of Way Area that Grantee believes could interfere with the safe and reliable construction, operation and maintenance of Grantee's facilities. No trees, plant life, structures and fences shall be planted, grown or installed within 8 feet of the front door and within 2 feet of the other sides of transformers and switching cabinet enclosures. Grantee shall not be responsible to Grantor for damages to or removal of trees, plant life, structures and fences placed in front of transformer doors.
- Ground Elevation:** Grantor must grade the Right of Way Area to within four inches of final grade before Grantee installs its facilities. Grantor must maintain this ground elevation after Grantee installs its facilities.
- Damages:** If Grantor, its agents, employees or contractors, damage Grantee's facilities, Grantee shall make repairs at Grantor's expense.
- Successors:** This Right of Way runs with the land and binds and benefits Grantor's and Grantee's successors, lessees, licensees and assigns.

**Witnesses:**(type or print name below signature)

*Berrie Harwood*  
Berrie Harwood

*Bruce H. Tobin*  
Bruce H. Tobin

**Grantor:**(type or print name below signature) 9.00  
DISTINCTIVE LAND, INC.  
A Michigan Corporation  
BY: *Michael E. Tobin*  
ITS: Vice President

#38 REG/DEEDS PAID  
0001 MAY 13 '93 11:25AM  
#39 REG/DEEDS PAID  
0002 FEB 24 '94 01:59PM  
#40 REG/DEEDS PAID  
0001 MAY 13 '93 11:25AM

9.00  
2.00  
11.00  
2.00  
RMC

Acknowledged before me in Oakland County, Michigan, on April 12, 1993 by Michael E. Tobin, the Vice President of Distinctive Land, Inc., a Michigan Corporation, for the Corporation.

**Notary's Stamp**  
BERRIE HARWOOD  
Notary Public, Oakland County, MI  
My Commission Expires 10-18-95  
(Notary's name, county, and date commission expires)

**Notary's Signature**  
*Berrie Harwood*

This easement is re-recorded for purposes of showing the planned "as installed" centerlines of easements granted as shown on drawing attached hereto.

RECORDED RIGHT OF WAY NO. 145715

40. 39 17 01

10. 10. 10. 10. 10.

10. 10. 10. 10. 10.

10. 10. 10. 10. 10.

**Return to:**  
**O.V. Racine**  
**The Detroit Edison Company**  
**30400 Telegraph Road, Rm. 277**  
**Bingham Farms, MI 48025**

R/W NO: R-9211651-01  
Sidwell No: (12-06-426-005)

LIBER 14472 PG 67  
LIBER 13575 PG 669

APPENDIX "A"

Fox Chase Condominium, according to the Master Deed recorded in Liber 13438, Page 900, Oakland County Records and designated as Oakland County Condominium Subdivision Plan No. 817 together with rights in general common elements and limited common elements, as set forth in the above master deed and being further described as: Part of the Southeast 1/4 of Section 6, T3N, R6E, White Lake Township, Oakland County, Michigan, described as beginning at the Southeast corner of said Section 6, thence North 89°35'25" West, along the South line of said Section, 2006.88 feet to the Easterly line of "White Lake Grove Subdivison No. 1" (As recorded in Liber 47, Page 44, Oakland County Records), thence North 00°20'27" East along said line 981.91 feet to the Easterly line of "Supervisor's Plat No. 4 Subdivision" (As recorded in Liber 30, Page 50, Oakland County Records); thence North 00°31'51" East, along said line, 1032.63 feet; thence North 89°56'52" East, along said line, 620.40 feet, thence North 89°59'49" East, 773.81 feet; thence North 00°00'11" West, 626.88 feet to the East and West 1/4 line of said Section 6; thence North 89°59'49" East, along said 1/4 line, 570.06 feet to the East 1/4 corner of said Section 6 and East line of said section; thence South 00°35'10" East, along said East line, 2656.49 feet to the point of beginning, containing 100.566 acres - Sidwell No: (12-06-426-005)

Ent 12-06-427-006  
Units 1-70 and General Common Element  
9 000817

Prepared by and Return to: Omer V. Racine, 30400 Telegraph Road, Suite 277, Birmingham, Michigan 48025/avm.

RECORDED  
RIGHT OF WAY NO. 45715.9

Return to:  
O.V. Racine  
The Detroit Edison Company  
30400 Telegraph Road, Rm. 277  
Bingham Farms, MI 48025

# RIGHT OF WAY APPLICATION

DATE ISSUED	4-1-93		RAW NO.	R-9211651-01
DATE WANTED	5-1-93		PHONE	645-4027
SERVICE PLANNER	M. O'DONNELL			
PROJECT NAME	FOX CHASE CONDOS			
TOWNSHIP/CITY	WHITE LAKE			
ADDRESS				
CROSS STREET	ORMOND RD		SECTION	6
SIDWELL NO.	12-06-426-005		QUARTER	EAST 1/4

## TYPE OF PROJECT

OVERHEAD

UNDERGROUND

ACREAGE	
COMMERCIAL BLDG	
* SITE CONDO	
* MOBILE HOME PK	

LOTS	
* SUB	
* APT. COMPLEX	
* CONDO	<input checked="" type="checkbox"/>

JOINT USE REQUIRED  YES  NO

MBT  JOINT USE NO.

GTE  JOINT USE NO. J-9211651-10 DOUG CHING

CONS. PWR  JOINT USE NO.

CABLE TV CO. NAME

CABLE TV  JOINT USE NO.

NAME OF OWNER/CUSTOMER: MICHAEL E. TOBIN, DISTINCTIVE LAND CO.

CONTACT PERSON: MICHAEL E. TOBIN

ADDRESS: 31500 WEST 10 MILE, FARMINGTON HILLS MI

HOME PHONE: BUSINESS PHONE: 474-9500

ADJACENT PROPERTY OWNER

ADDRESS

HOME PHONE: BUSINESS PHONE:

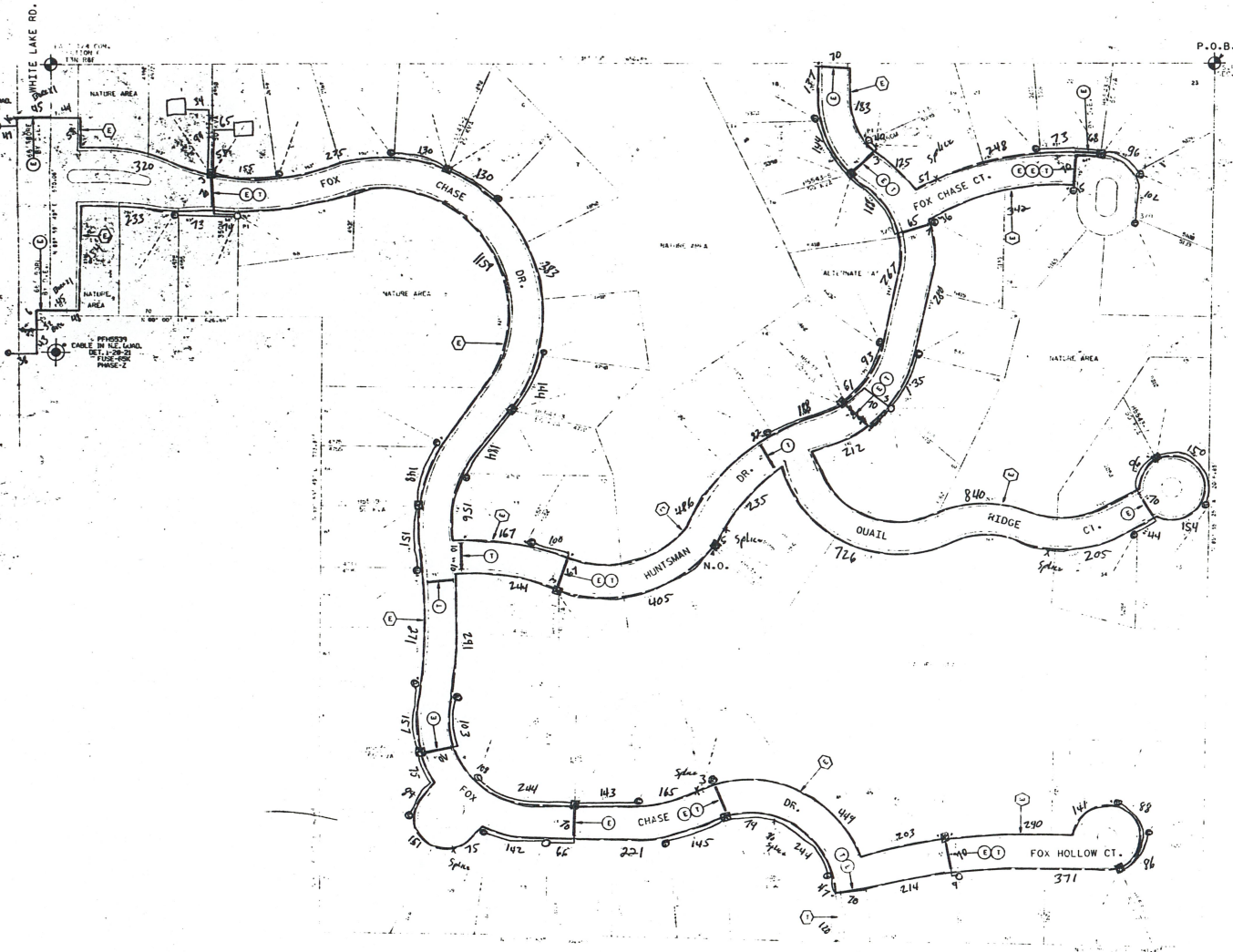
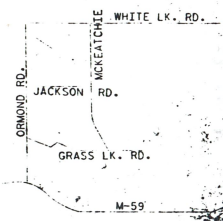
## MATERIAL TO BE PROVIDED

1. SITE PLAN/SKETCH/FINAL PROPOSED PLAT\*
2. PROPERTY DESCRIPTION (SIDWELL NO.) (\*ACTUAL DESCRIPTION)
3. PROOF OF OWNERSHIP OF REQUESTING CUSTOMER: WARRANTY DEED, L/C, TITLE SEARCH, COMMITMENT
4. SIDWELL PAGE (COPY)
5. SIDWELL NO.
6. COPY OF FUTURE J/U MEMO

SUPERVISOR: *[Signature]* R/W SECURED

RECORDED RIGHT OF WAY NO. 45715-0

Part 4/1/93



**TRANSFORMER DATA**

U.S. NO.	SIZE	ED. STR. NO.
10520	1.5 A	101-118
10525	1.5 A	101-118
10530	1.5 A	101-118
10535	1.5 A	101-118
10540	1.5 A	101-118
10545	1.5 A	101-118
10550	1.5 A	101-118
10555	1.5 A	101-118
10560	1.5 A	101-118
10565	1.5 A	101-118
10570	1.5 A	101-118
10575	1.5 A	101-118
10580	1.5 A	101-118
10585	1.5 A	101-118
10590	1.5 A	101-118
10595	1.5 A	101-118
10600	1.5 A	101-118
10605	1.5 A	101-118
10610	1.5 A	101-118
10615	1.5 A	101-118
10620	1.5 A	101-118
10625	1.5 A	101-118
10630	1.5 A	101-118
10635	1.5 A	101-118
10640	1.5 A	101-118
10645	1.5 A	101-118
10650	1.5 A	101-118
10655	1.5 A	101-118
10660	1.5 A	101-118
10665	1.5 A	101-118
10670	1.5 A	101-118
10675	1.5 A	101-118
10680	1.5 A	101-118
10685	1.5 A	101-118
10690	1.5 A	101-118
10695	1.5 A	101-118
10700	1.5 A	101-118
10705	1.5 A	101-118
10710	1.5 A	101-118
10715	1.5 A	101-118
10720	1.5 A	101-118
10725	1.5 A	101-118
10730	1.5 A	101-118
10735	1.5 A	101-118
10740	1.5 A	101-118
10745	1.5 A	101-118
10750	1.5 A	101-118
10755	1.5 A	101-118
10760	1.5 A	101-118
10765	1.5 A	101-118
10770	1.5 A	101-118
10775	1.5 A	101-118
10780	1.5 A	101-118
10785	1.5 A	101-118
10790	1.5 A	101-118
10795	1.5 A	101-118
10800	1.5 A	101-118
10805	1.5 A	101-118
10810	1.5 A	101-118
10815	1.5 A	101-118
10820	1.5 A	101-118
10825	1.5 A	101-118
10830	1.5 A	101-118
10835	1.5 A	101-118
10840	1.5 A	101-118
10845	1.5 A	101-118
10850	1.5 A	101-118
10855	1.5 A	101-118
10860	1.5 A	101-118
10865	1.5 A	101-118
10870	1.5 A	101-118
10875	1.5 A	101-118
10880	1.5 A	101-118
10885	1.5 A	101-118
10890	1.5 A	101-118
10895	1.5 A	101-118
10900	1.5 A	101-118
10905	1.5 A	101-118
10910	1.5 A	101-118
10915	1.5 A	101-118
10920	1.5 A	101-118
10925	1.5 A	101-118
10930	1.5 A	101-118
10935	1.5 A	101-118
10940	1.5 A	101-118
10945	1.5 A	101-118
10950	1.5 A	101-118
10955	1.5 A	101-118
10960	1.5 A	101-118
10965	1.5 A	101-118
10970	1.5 A	101-118
10975	1.5 A	101-118
10980	1.5 A	101-118
10985	1.5 A	101-118
10990	1.5 A	101-118
10995	1.5 A	101-118
11000	1.5 A	101-118

**TRANSFORMER SPEC.**

NO. OF TRANSFORMERS: 1

NO. OF FEEDS: 1

NO. OF TRENCH CABLE WIRING: 1

TEMPORARY CABLE NUMBER SPEC: 1

SECONDARY CONNECTION BOX SPEC: 1

- CODE**
- TEMPORARY SECONDARY PENETRAL/TEMPORARY CABLE WIRING
  - DFT (HEAD FROM TYPE)
  - DFT (NON-SEMPRO - LIVE FROM TYPE)
  - DFT (SEMPRO - LIVE FROM TYPE)
  - DEPRESSION OF TRANSFORMER DOOR OPENING
  - SECONDARY PENETRAL
  - △ SECONDARY CONNECTION BOX
  - CABLE POLE
  - PRIMARY CABLE CABINET
  - BUFTED PRIMARY CABLE - ALL VOLTAGE
  - BUFTED SECONDARY CABLE
  - BUFTED SECONDARY SERVICE CABLE
  - DETROIT EDISON TRENCH ONLY
  - TELEPHONE TRENCH ONLY
  - WATER
  - GAS
  - CABLE TV
  - PROPOSED CONDUIT
  - SEP DOWN CABINET

**CABLE SUMMARY**

ITEM #	QUANTITY	UNIT	AMOUNT
1	153	LINEAL FT	153
2	202	LINEAL FT	202
3	184	LINEAL FT	184
4	174	LINEAL FT	174
5	174	LINEAL FT	174
6	174	LINEAL FT	174
7	174	LINEAL FT	174
8	174	LINEAL FT	174
9	174	LINEAL FT	174
10	174	LINEAL FT	174
11	174	LINEAL FT	174
12	174	LINEAL FT	174
13	174	LINEAL FT	174
14	174	LINEAL FT	174
15	174	LINEAL FT	174
16	174	LINEAL FT	174
17	174	LINEAL FT	174
18	174	LINEAL FT	174
19	174	LINEAL FT	174
20	174	LINEAL FT	174
21	174	LINEAL FT	174
22	174	LINEAL FT	174
23	174	LINEAL FT	174
24	174	LINEAL FT	174
25	174	LINEAL FT	174
26	174	LINEAL FT	174
27	174	LINEAL FT	174
28	174	LINEAL FT	174
29	174	LINEAL FT	174
30	174	LINEAL FT	174
31	174	LINEAL FT	174
32	174	LINEAL FT	174
33	174	LINEAL FT	174
34	174	LINEAL FT	174
35	174	LINEAL FT	174
36	174	LINEAL FT	174
37	174	LINEAL FT	174
38	174	LINEAL FT	174
39	174	LINEAL FT	174
40	174	LINEAL FT	174
41	174	LINEAL FT	174
42	174	LINEAL FT	174
43	174	LINEAL FT	174
44	174	LINEAL FT	174
45	174	LINEAL FT	174
46	174	LINEAL FT	174
47	174	LINEAL FT	174
48	174	LINEAL FT	174
49	174	LINEAL FT	174
50	174	LINEAL FT	174
51	174	LINEAL FT	174
52	174	LINEAL FT	174
53	174	LINEAL FT	174
54	174	LINEAL FT	174
55	174	LINEAL FT	174
56	174	LINEAL FT	174
57	174	LINEAL FT	174
58	174	LINEAL FT	174
59	174	LINEAL FT	174
60	174	LINEAL FT	174
61	174	LINEAL FT	174
62	174	LINEAL FT	174
63	174	LINEAL FT	174
64	174	LINEAL FT	174
65	174	LINEAL FT	174
66	174	LINEAL FT	174
67	174	LINEAL FT	174
68	174	LINEAL FT	174
69	174	LINEAL FT	174
70	174	LINEAL FT	174
71	174	LINEAL FT	174
72	174	LINEAL FT	174
73	174	LINEAL FT	174
74	174	LINEAL FT	174
75	174	LINEAL FT	174
76	174	LINEAL FT	174
77	174	LINEAL FT	174
78	174	LINEAL FT	174
79	174	LINEAL FT	174
80	174	LINEAL FT	174
81	174	LINEAL FT	174
82	174	LINEAL FT	174
83	174	LINEAL FT	174
84	174	LINEAL FT	174
85	174	LINEAL FT	174
86	174	LINEAL FT	174
87	174	LINEAL FT	174
88	174	LINEAL FT	174
89	174	LINEAL FT	174
90	174	LINEAL FT	174
91	174	LINEAL FT	174
92	174	LINEAL FT	174
93	174	LINEAL FT	174
94	174	LINEAL FT	174
95	174	LINEAL FT	174
96	174	LINEAL FT	174
97	174	LINEAL FT	174
98	174	LINEAL FT	174
99	174	LINEAL FT	174
100	174	LINEAL FT	174
101	174	LINEAL FT	174
102	174	LINEAL FT	174
103	174	LINEAL FT	174
104	174	LINEAL FT	174
105	174	LINEAL FT	174
106	174	LINEAL FT	174
107	174	LINEAL FT	174
108	174	LINEAL FT	174
109	174	LINEAL FT	174
110	174	LINEAL FT	174
111	174	LINEAL FT	174
112	174	LINEAL FT	174
113	174	LINEAL FT	174
114	174	LINEAL FT	174
115	174	LINEAL FT	174
116	174	LINEAL FT	174
117	174	LINEAL FT	174
118	174	LINEAL FT	174
119	174	LINEAL FT	174
120	174	LINEAL FT	174
121	174	LINEAL FT	174
122	174	LINEAL FT	174
123	174	LINEAL FT	174
124	174	LINEAL FT	174
125	174	LINEAL FT	174
126	174	LINEAL FT	174
127	174	LINEAL FT	174
128	174	LINEAL FT	174
129	174	LINEAL FT	174
130	174	LINEAL FT	174
131	174	LINEAL FT	174
132	174	LINEAL FT	174
133	174	LINEAL FT	174
134	174	LINEAL FT	174
135	174	LINEAL FT	174
136	174	LINEAL FT	174
137	174	LINEAL FT	174
138	174	LINEAL FT	174
139	174	LINEAL FT	174
140	174	LINEAL FT	174
141	174	LINEAL FT	174
142	174	LINEAL FT	174
143	174	LINEAL FT	174
144	174	LINEAL FT	174
145	174	LINEAL FT	174
146	174	LINEAL FT	174
147	174	LINEAL FT	174
148	174	LINEAL FT	174
149	174	LINEAL FT	174
150	174	LINEAL FT	174
151	174	LINEAL FT	174
152	174	LINEAL FT	174
153	174	LINEAL FT	174
154	174	LINEAL FT	174
155	174	LINEAL FT	174
156	174	LINEAL FT	174
157	174	LINEAL FT	174
158	174	LINEAL FT	174
159	174	LINEAL FT	174
160	174	LINEAL FT	174
161	174	LINEAL FT	174
162	174	LINEAL FT	174
163	174	LINEAL FT	174
164	174	LINEAL FT	174
165	174	LINEAL FT	174
166	174	LINEAL FT	174
167	174	LINEAL FT	174
168	174	LINEAL FT	174
169	174	LINEAL FT	174
170	174	LINEAL FT	174
171	174	LINEAL FT	174
172	174	LINEAL FT	174
173	174	LINEAL FT	174
174	174	LINEAL FT	174
175	174	LINEAL FT	174
176	174	LINEAL FT	174
177	174	LINEAL FT	174
178	174	LINEAL FT	174
179	174	LINEAL FT	174
180	174	LINEAL FT	174
181	174	LINEAL FT	174
182	174	LINEAL FT	174
183	174	LINEAL FT	174
184	174	LINEAL FT	174
185	174	LINEAL FT	174
186	174	LINEAL FT	174
187	174	LINEAL FT	174
188	174	LINEAL FT	174
189	174	LINEAL FT	174
190	174	LINEAL FT	174
191	174	LINEAL FT	174
192	174	LINEAL FT	174
193	174	LINEAL FT	174
194	174	LINEAL FT	174
195	174	LINEAL FT	174
196	174	LINEAL FT	174
197	174	LINEAL FT	174
198	174	LINEAL FT	174
199	174	LINEAL FT	174
200	174	LINEAL FT	174

**TRENCH SUMMARY**

ITEM #	QUANTITY	UNIT	AMOUNT
1	153	LINEAL FT	153
2	202	LINEAL FT	202
3	184	LINEAL FT	184
4	174	LINEAL FT	174
5	174	LINEAL FT	174
6	174	LINEAL FT	174
7	174	LINEAL FT	174
8	174	LINEAL FT	174
9	174	LINEAL FT	174
10	174	LINEAL FT	174
11	174	LINEAL FT	174
12	174	LINEAL FT	174
13	174	LINEAL FT	174
14	174	LINEAL FT	174
15	174	LINEAL FT	174
16	174	LINEAL FT	174
17	174	LINEAL FT	174