

+

+

RIGHT OF WAY FILE #

R42035

GRANTOR NAME

[Empty grid for Grantor Name]

[Empty grid for Grantor Name]

STREET ADDRESS

[Empty grid for Street Address]

[Empty grid for Street Address]

ST [Empty grid]

CITY/TOWN

[Empty grid for City/Town]

ZIP CODE

[Empty grid for Zip Code]

EASEMENT DESCRIPTION

15

AGREEMENT DATE

[Empty grid for Agreement Date]

AGREEMENT TYPE

[Empty grid for Agreement Type with R, P, C options]

LIBER #

[Empty grid for Liber #]

PAGE #

[Empty grid for Page #]

DRAWING R/W #

[Empty grid for Drawing R/W #]

PVT CL#

[Empty grid for PVT CL#]

SECTION

[Empty grid for Section]

QUARTER SECTION 3

[Empty grid for Quarter Section 3]

QUARTER SECTION 2

[Empty grid for Quarter Section 2]

QUARTER SECTION 1

[Empty grid for Quarter Section 1]

TOWNSHIP

[Empty grid for Township]

COUNTY

[Empty grid for County]

RTE OF LINE

[Empty grid for Route of Line]

TOWNSHIP RANGE

[Empty grid for Township Range]

DIVISION CODE

[Empty grid for Division Code with A, D, M, O, T, W options]

SUBDIVISION NAME

[Empty grid for Subdivision Name]

EAST OF

[Empty grid for East of]

WEST OF

[Empty grid for West of]

NORTH OF

[Empty grid for North of]

SOUTH OF

[Empty grid for South of]

OUT LOT

[Empty grid for Out Lot]

BLOCK #1

[Empty grid for Block #1]

LOT #1

[Empty grid for Lot #1]

BLOCK #2

[Empty grid for Block #2]

LOT #2

[Empty grid for Lot #2]

+

+

To (Supervisor, RE & R/W) RICHARD LONGWISH	For RE & R/W Dept. Use	Date Received	DE/Bell/C.P. No.
Division ANN ARBOR	Date 4-9-91	Application No. HS-4316	

We have included the following necessary material and information:

Material:

- A. Proposed Subdivision
 1. copy of complete final proposed plat - All pages
 or
 B. Other than proposed subdivision (condo., apts. mobile home park — other)
 1. Property description.
 2. Site plan.
 3. title information (deed, title commitment, contract with title commitment, or title search).

Note: Do not submit application for URD easements until all above material has been acquired.

91066094116

REPORT OF REAL ESTATE AND RIGHTS OF WAY DEPARTMENT RAW SECURED AS INDICATED ON THIS SKETCH	PERMITS TO:
BY: <u>Richard Longwish</u>	RECORD CENTER <u>1</u>
DATE: <u>7-17-91</u>	R/W FILES <u>1</u>
DATE WANTED	MBT <u>1</u>
DISTRICT FIELDMAN: <u>Richard Longwish</u>	ORIGINATOR <u>1</u>
	TOTAL <u>1</u>

Information

1. Project Name FOX RUN ESTATES	County LIVINGSTON
City/Township/Village HAMBURG TWP.	Section No. SW 1/4 Sec. 33
Type of Development <input checked="" type="checkbox"/> Proposed Subdivision <input type="checkbox"/> Subdivision <input type="checkbox"/> Apartment Complex <input type="checkbox"/> Mobile Home Park <input type="checkbox"/> Condominium <input type="checkbox"/> Other	
2. Name of Owner LOUIS DEVELOPMENT CORP., A MICHIGAN CORP.	Phone No. 313-620-2959
Address 9779 ORTONVILLE RD., CLARKSTON, MI 48348	
Owner's Representative GARY L. MITCHELL	Phone No. 313-620-2959
Date Service is Wanted 5-30-91	

4. Entire Project will be developed at one time Yes No

5. Joint easements required — Michigan Bell Telephone: H-167-1 Yes No
 — Consumers Power Yes No

a. Name of Other Utilities If Not Michigan Bell Telephone or Consumers Power
MULTI-CABLEVISION - H-168-1

b. Other Utility Engineer Names
DAN BACKUS

Phone Numbers
313-231-1872

Addresses
P.O. Box 660
HAMBURG, MI 48139

6 Additional Information or Comments

Note: Trenching letter attached will be submitted later

Service Planner J. WALLACE	Signed (Service Planning Supervisor) <u>Charles D. [Signature]</u>
Phone No. 3304	Address HOWEN S.C.

RECORDED RIGHT OF WAY NO. 42035

UNDERGROUND DISTRIBUTION EASEMENT (RIGHT OF WAY) NO. HS-4316

On June 3, 1991, for the consideration of system betterment, Grantor grants to Grantee a permanent underground distribution easement ("Right of Way") in, on and across a part of Grantor's Land called the "Right of Way Area".

"Grantor" is:

LOUIS DEVELOPMENT CORPORATION, A Michigan corporation, 9779 Ortonville Road, Clarkston, Michigan 48348 and A. RICHARD WISELEY and DILYS WISELEY, His Wife, 9250 Island Lake Road, Dexter, Michigan 48130

"Grantee" is:

The Detroit Edison Company, a Michigan corporation, 2000 Second Avenue, Detroit, Michigan 48226
Michigan Bell Telephone Company, a Michigan corporation, 444 Michigan Avenue, Detroit, Michigan 48226
Multi-Cablevision Company of Livingston/Washtenaw, a Michigan corporation, 8505 E. M-36, P.O. Box 660, Hamburg, Michigan 48139

"Grantor's Land" is in Hamburg Township, Livingston County, Michigan described as:

Part of the Southwest ¼ of Section 33, T1N, R5E, Hamburg Township, Livingston County, Michigan, described as follows: Commencing at the Southwest corner of said Section 33; thence N 00°19'43" E 403.35 feet, along the West line of said Section 33, to a point in the centerline of Strawberry Lake Road; thence N 69°23'34" E 135.00 feet along the centerline of Strawberry Lake Road to the Point of Beginning; thence N 00°19'43" E 345.47 feet; thence S 89°40'17" E 123.91 feet; thence N 00°19'43" E 454.24 feet; thence N 89°40'17" W 250.00 feet; thence N 00°19'43" E 230.34 feet; thence N 69°35'40" E 708.91 feet; thence S 00°25'06" W 1076.26 feet to a point in the centerline of Strawberry Lake Road; thence S 69°23'34" W 573.05 feet along the centerline of Strawberry Lake Road to the Point of Beginning. Containing 12.687 acres.

The "Right of Way Area" is a part of Grantor's Land described as:

All in accordance with Proposed Plat which is attached hereto and made a part hereof. (Appendix B)
The width of Right of Way is Ten (10) feet and Fifteen (15) feet.

- 1. Purpose:** The purpose of this Right of Way is to construct, reconstruct, modify, add to, operate and maintain utility line facilities consisting of poles, guys, anchors, wires, manholes, conduits, pipes, cables, transformers and accessories.
- 2. Access:** Grantee has the right of access to and from the Right of Way Area.
- 3. Buildings or other Permanent Structures:** No buildings or other permanent structures shall be placed in the Right of Way Area without Grantee's prior written consent.
- 4. Excavation:** As required by Public Act 53 of 1974, MISS DIG must be called on 1-800-482-7171 before anyone excavates in the Right of Way Area.
- 5. Trees, Bushes, Branches, Roots, Structures and Fences:** Grantee may trim, cut down, remove or otherwise control any trees, bushes, branches and roots in the Right of Way Area (or that could grow into the Right of Way Area) and remove structures and fences in the Right of Way Area that Grantee believes could interfere with the safe and reliable construction, operation and maintenance of Grantee's facilities. No trees, plant life, structures and fences shall be planted, grown or installed within 8 feet of the front door and within 2 feet of the other sides of transformers and switching cabinet enclosures. Grantee shall not be responsible to Grantor for damages to or removal of trees, plant life, structures and fences placed in front of transformer doors.
- 6. Ground Elevation:** Grantor must grade the Right of Way Area to within four inches of final grade before Grantee installs its facilities. Grantor must maintain this ground elevation after Grantee installs its facilities.
- 7. Damages:** If Grantor, its agents, employees or contractors, damage Grantee's facilities, Grantee shall make repairs at Grantor's expense.
- 8. Successors:** This Right of Way runs with the land and binds and benefits Grantor's and Grantee's successors, lessees, licensees and assigns.

Witnesses:

Grantor:

George H. J. Smith

George H. J. Smith
Pamela Hoskin

Pamela Hoskin

LOUIS DEVELOPMENT CORPORATION,
 A Michigan Corporation

Gary L. Mitchell

 GARY L. MITCHELL, PRESIDENT

A. Richard Wiseley

 A. RICHARD WISELEY

Dilys Wiseley

 DILYS WISELEY, HIS WIFE

Prepared by and Return to:
Richard Longwish, Detroit Edison, 425 S. Main, Suite 332, P.O. Box 8602, Ann Arbor, Michigan 48107

LIBER 1480 PAGE 0403

11/2

UNRECORDED RIGHT OF WAY NO. 42035 RECORDED

JUN 11 9 13 AM '91
 NANCY HAYLAND
 REGISTRAR OF DEEDS
 LIVINGSTON COUNTY, MI
 48873

OVER

LIBER 1480 PAGE 0404

Acknowledged before me in Washtenaw County, Michigan, on June 3, 1991

by GARY L. MITCHELL the PRESIDENT

of LOUIS DEVELOPMENT CORPORATION, a Michigan corporation, for the corporation.

ELIZABETH A. EVANS
Notary's A NOTARY PUBLIC, OAKLAND COUNTY, MI
Stamp MY COMMISSION EXPIRES MAR. 27, 1993

Notary's Signature Elizabeth A. Evans

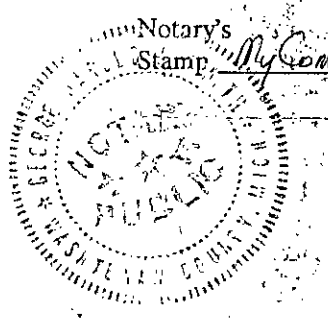
Acting in Washtenaw County

Acknowledged before me in Washtenaw County, Michigan, on May 30, 1991

by A. RICHARD WISELEY and DILYS WISELEY, HIS WIFE

Notary's Stamp My Commission Expires 5-1-1993

Notary's Signature George Harold J. Smith



RETURN TO:
RICHARD LONGWISH
THE DETROIT EDISON COMPANY
425 S. MAIN STREET, ROOM 332
ANN ARBOR, MI 48104

1991 JUN 11 11:30

GILNER ENGINEERS
 CIVIL ENGINEERS
 10 N. WASHINGTON ST. SUITE 200
 CLARKSTON, MI 48016
 (313) 620-9959

SC-V
 DATE: 07/24/90
 JOB # 90-115

PRELIMINARY PLAT APPROVALS

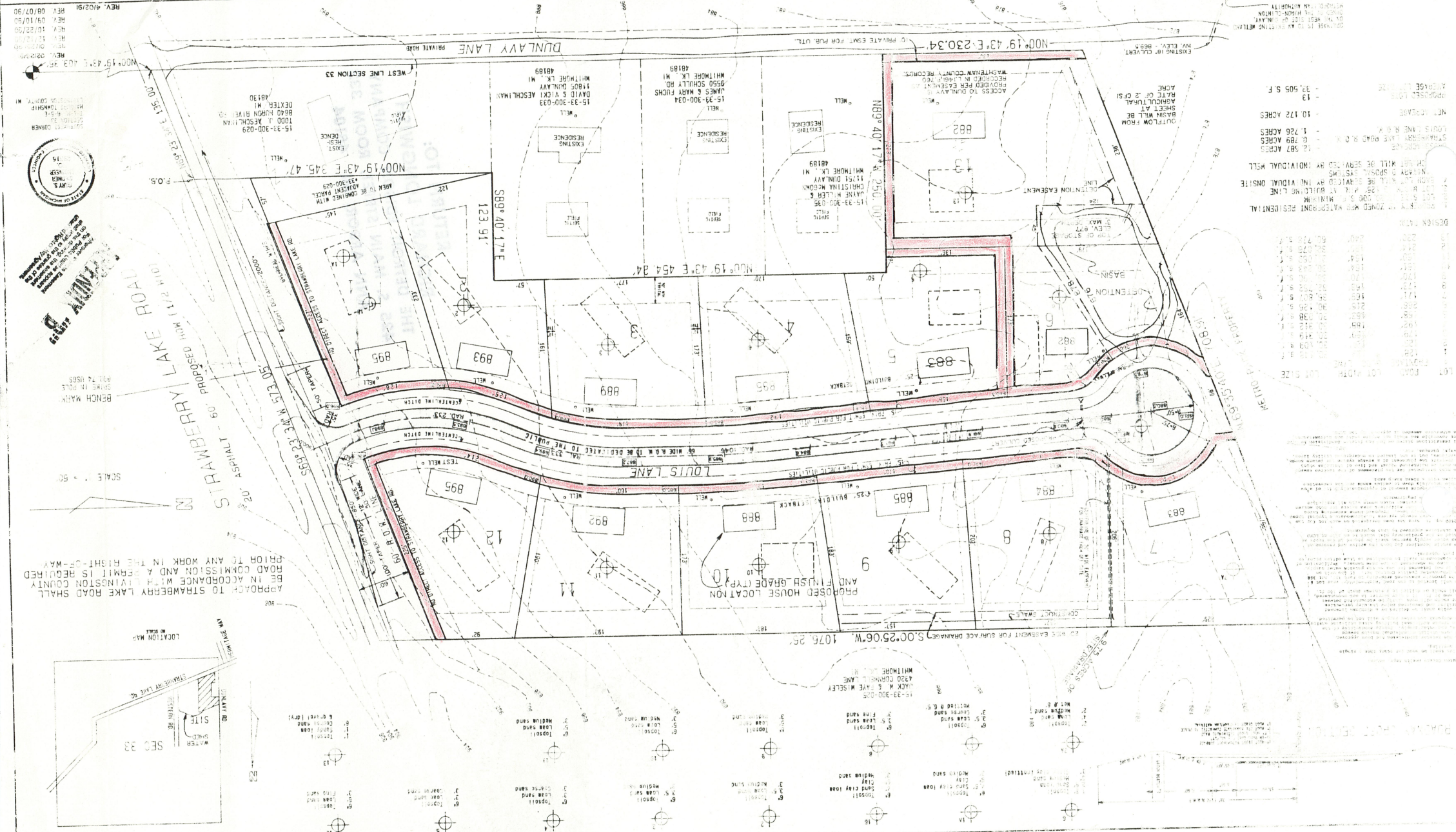
AGENCY	HAMBURG TOWNSHIP	08/28/90	03/26/91
LIVINGSTON CO. ROAD COMM.		02/14/91	
LIVINGSTON CO. HEALTH DEPT.		02/17/91	
LIVINGSTON CO. DRAIN COMM.		01/17/91	

PROPRIETOR: LOUIS DEVELOPMENT CORP.
 9779 ORTONVILLE ROAD
 CLARKSTON, MI 48016
 (313) 620-9959

LEGEND:
 -8000 - DENSITIES EXISTING GRADE
 -8000 - DENSITIES PROPOSED GRADE
 -8000 - DENSITIES PROPOSED CONTROL

FOX RUN ESTATES
 R. S. E., HAMBURG TWP., LIVINGSTON CO., MI
 PRELIMINARY PLAT

REV. 08/28/91
 REV. 09/10/90
 REV. 10/20/90
 REV. 11/20/90
 REV. 01/20/91
 REV. 02/20/91



RECORDS RIGHT OF WAY NO. 74000

NOTES:
 1. SOIL BORINGS WERE DONE ON 3-20-90 IN THE PRESENCE OF MARK BOYLES, LIVINGSTON COUNTY HEALTH DEPT. AT A LATER DATE, PROPOSED LOCATION IS TO BE INSTALLED.
 2. NO PUBLIC UTILITIES ARE PROPOSED, HOWEVER, IF INSTALLED.
 3. EXISTING SITE IS OPEN FIELD, NO TREES, BODIES OR WATER ON NEARBY AREAS OR IMPROVEMENTS ON PROPERTY.
 4. SUBJECT PROPERTY IS BEING OFFERED FOR SALE BY FLOOD INSURANCE FUND, EFFECTIVE FEB. 19, 1986.
 5. EASEMENTS TO BE COMPLETED IN ONE PHASE.
 6. ALL UTILITIES SHALL BE PLACED UNDERGROUND.
 7. ALL RESTRICTIVE COVENANTS OR EASEMENTS ARE SHOWN ON THIS PLAT.

DESIGNATION: LOT 1077 ACRES
 LOT 1078 ACRES
 LOT 1079 ACRES
 LOT 1080 ACRES
 LOT 1081 ACRES
 LOT 1082 ACRES
 LOT 1083 ACRES
 LOT 1084 ACRES
 LOT 1085 ACRES
 LOT 1086 ACRES
 LOT 1087 ACRES
 LOT 1088 ACRES
 LOT 1089 ACRES
 LOT 1090 ACRES
 LOT 1091 ACRES
 LOT 1092 ACRES
 LOT 1093 ACRES
 LOT 1094 ACRES
 LOT 1095 ACRES
 LOT 1096 ACRES
 LOT 1097 ACRES
 LOT 1098 ACRES
 LOT 1099 ACRES
 LOT 1100 ACRES
 LOT 1101 ACRES
 LOT 1102 ACRES
 LOT 1103 ACRES
 LOT 1104 ACRES
 LOT 1105 ACRES
 LOT 1106 ACRES
 LOT 1107 ACRES
 LOT 1108 ACRES
 LOT 1109 ACRES
 LOT 1110 ACRES
 LOT 1111 ACRES
 LOT 1112 ACRES
 LOT 1113 ACRES
 LOT 1114 ACRES
 LOT 1115 ACRES
 LOT 1116 ACRES
 LOT 1117 ACRES
 LOT 1118 ACRES
 LOT 1119 ACRES
 LOT 1120 ACRES
 LOT 1121 ACRES
 LOT 1122 ACRES
 LOT 1123 ACRES
 LOT 1124 ACRES
 LOT 1125 ACRES
 LOT 1126 ACRES
 LOT 1127 ACRES
 LOT 1128 ACRES
 LOT 1129 ACRES
 LOT 1130 ACRES
 LOT 1131 ACRES
 LOT 1132 ACRES
 LOT 1133 ACRES
 LOT 1134 ACRES
 LOT 1135 ACRES
 LOT 1136 ACRES
 LOT 1137 ACRES
 LOT 1138 ACRES
 LOT 1139 ACRES
 LOT 1140 ACRES
 LOT 1141 ACRES
 LOT 1142 ACRES
 LOT 1143 ACRES
 LOT 1144 ACRES
 LOT 1145 ACRES
 LOT 1146 ACRES
 LOT 1147 ACRES
 LOT 1148 ACRES
 LOT 1149 ACRES
 LOT 1150 ACRES
 LOT 1151 ACRES
 LOT 1152 ACRES
 LOT 1153 ACRES
 LOT 1154 ACRES
 LOT 1155 ACRES
 LOT 1156 ACRES
 LOT 1157 ACRES
 LOT 1158 ACRES
 LOT 1159 ACRES
 LOT 1160 ACRES
 LOT 1161 ACRES
 LOT 1162 ACRES
 LOT 1163 ACRES
 LOT 1164 ACRES
 LOT 1165 ACRES
 LOT 1166 ACRES
 LOT 1167 ACRES
 LOT 1168 ACRES
 LOT 1169 ACRES
 LOT 1170 ACRES
 LOT 1171 ACRES
 LOT 1172 ACRES
 LOT 1173 ACRES
 LOT 1174 ACRES
 LOT 1175 ACRES
 LOT 1176 ACRES
 LOT 1177 ACRES
 LOT 1178 ACRES
 LOT 1179 ACRES
 LOT 1180 ACRES
 LOT 1181 ACRES
 LOT 1182 ACRES
 LOT 1183 ACRES
 LOT 1184 ACRES
 LOT 1185 ACRES
 LOT 1186 ACRES
 LOT 1187 ACRES
 LOT 1188 ACRES
 LOT 1189 ACRES
 LOT 1190 ACRES
 LOT 1191 ACRES
 LOT 1192 ACRES
 LOT 1193 ACRES
 LOT 1194 ACRES
 LOT 1195 ACRES
 LOT 1196 ACRES
 LOT 1197 ACRES
 LOT 1198 ACRES
 LOT 1199 ACRES
 LOT 1200 ACRES
 LOT 1201 ACRES
 LOT 1202 ACRES
 LOT 1203 ACRES
 LOT 1204 ACRES
 LOT 1205 ACRES
 LOT 1206 ACRES
 LOT 1207 ACRES
 LOT 1208 ACRES
 LOT 1209 ACRES
 LOT 1210 ACRES
 LOT 1211 ACRES
 LOT 1212 ACRES
 LOT 1213 ACRES
 LOT 1214 ACRES
 LOT 1215 ACRES
 LOT 1216 ACRES
 LOT 1217 ACRES
 LOT 1218 ACRES
 LOT 1219 ACRES
 LOT 1220 ACRES
 LOT 1221 ACRES
 LOT 1222 ACRES
 LOT 1223 ACRES
 LOT 1224 ACRES
 LOT 1225 ACRES
 LOT 1226 ACRES
 LOT 1227 ACRES
 LOT 1228 ACRES
 LOT 1229 ACRES
 LOT 1230 ACRES
 LOT 1231 ACRES
 LOT 1232 ACRES
 LOT 1233 ACRES
 LOT 1234 ACRES
 LOT 1235 ACRES
 LOT 1236 ACRES
 LOT 1237 ACRES
 LOT 1238 ACRES
 LOT 1239 ACRES
 LOT 1240 ACRES
 LOT 1241 ACRES
 LOT 1242 ACRES
 LOT 1243 ACRES
 LOT 1244 ACRES
 LOT 1245 ACRES
 LOT 1246 ACRES
 LOT 1247 ACRES
 LOT 1248 ACRES
 LOT 1249 ACRES
 LOT 1250 ACRES
 LOT 1251 ACRES
 LOT 1252 ACRES
 LOT 1253 ACRES
 LOT 1254 ACRES
 LOT 1255 ACRES
 LOT 1256 ACRES
 LOT 1257 ACRES
 LOT 1258 ACRES
 LOT 1259 ACRES
 LOT 1260 ACRES
 LOT 1261 ACRES
 LOT 1262 ACRES
 LOT 1263 ACRES
 LOT 1264 ACRES
 LOT 1265 ACRES
 LOT 1266 ACRES
 LOT 1267 ACRES
 LOT 1268 ACRES
 LOT 1269 ACRES
 LOT 1270 ACRES
 LOT 1271 ACRES
 LOT 1272 ACRES
 LOT 1273 ACRES
 LOT 1274 ACRES
 LOT 1275 ACRES
 LOT 1276 ACRES
 LOT 1277 ACRES
 LOT 1278 ACRES
 LOT 1279 ACRES
 LOT 1280 ACRES
 LOT 1281 ACRES
 LOT 1282 ACRES
 LOT 1283 ACRES
 LOT 1284 ACRES
 LOT 1285 ACRES
 LOT 1286 ACRES
 LOT 1287 ACRES
 LOT 1288 ACRES
 LOT 1289 ACRES
 LOT 1290 ACRES
 LOT 1291 ACRES
 LOT 1292 ACRES
 LOT 1293 ACRES
 LOT 1294 ACRES
 LOT 1295 ACRES
 LOT 1296 ACRES
 LOT 1297 ACRES
 LOT 1298 ACRES
 LOT 1299 ACRES
 LOT 1300 ACRES
 LOT 1301 ACRES
 LOT 1302 ACRES
 LOT 1303 ACRES
 LOT 1304 ACRES
 LOT 1305 ACRES
 LOT 1306 ACRES
 LOT 1307 ACRES
 LOT 1308 ACRES
 LOT 1309 ACRES
 LOT 1310 ACRES
 LOT 1311 ACRES
 LOT 1312 ACRES
 LOT 1313 ACRES
 LOT 1314 ACRES
 LOT 1315 ACRES
 LOT 1316 ACRES
 LOT 1317 ACRES
 LOT 1318 ACRES
 LOT 1319 ACRES
 LOT 1320 ACRES
 LOT 1321 ACRES
 LOT 1322 ACRES
 LOT 1323 ACRES
 LOT 1324 ACRES
 LOT 1325 ACRES
 LOT 1326 ACRES
 LOT 1327 ACRES
 LOT 1328 ACRES
 LOT 1329 ACRES
 LOT 1330 ACRES
 LOT 1331 ACRES
 LOT 1332 ACRES
 LOT 1333 ACRES
 LOT 1334 ACRES
 LOT 1335 ACRES
 LOT 1336 ACRES
 LOT 1337 ACRES
 LOT 1338 ACRES
 LOT 1339 ACRES
 LOT 1340 ACRES
 LOT 1341 ACRES
 LOT 1342 ACRES
 LOT 1343 ACRES
 LOT 1344 ACRES
 LOT 1345 ACRES
 LOT 1346 ACRES
 LOT 1347 ACRES
 LOT 1348 ACRES
 LOT 1349 ACRES
 LOT 1350 ACRES
 LOT 1351 ACRES
 LOT 1352 ACRES
 LOT 1353 ACRES
 LOT 1354 ACRES
 LOT 1355 ACRES
 LOT 1356 ACRES
 LOT 1357 ACRES
 LOT 1358 ACRES
 LOT 1359 ACRES
 LOT 1360 ACRES
 LOT 1361 ACRES
 LOT 1362 ACRES
 LOT 1363 ACRES
 LOT 1364 ACRES
 LOT 1365 ACRES
 LOT 1366 ACRES
 LOT 1367 ACRES
 LOT 1368 ACRES
 LOT 1369 ACRES
 LOT 1370 ACRES
 LOT 1371 ACRES
 LOT 1372 ACRES
 LOT 1373 ACRES
 LOT 1374 ACRES
 LOT 1375 ACRES
 LOT 1376 ACRES
 LOT 1377 ACRES
 LOT 1378 ACRES
 LOT 1379 ACRES
 LOT 1380 ACRES
 LOT 1381 ACRES
 LOT 1382 ACRES
 LOT 1383 ACRES
 LOT 1384 ACRES
 LOT 1385 ACRES
 LOT 1386 ACRES
 LOT 1387 ACRES
 LOT 1388 ACRES
 LOT 1389 ACRES
 LOT 1390 ACRES
 LOT 1391 ACRES
 LOT 1392 ACRES
 LOT 1393 ACRES
 LOT 1394 ACRES
 LOT 1395 ACRES
 LOT 1396 ACRES
 LOT 1397 ACRES
 LOT 1398 ACRES
 LOT 1399 ACRES
 LOT 1400 ACRES
 LOT 1401 ACRES
 LOT 1402 ACRES
 LOT 1403 ACRES
 LOT 1404 ACRES
 LOT 1405 ACRES
 LOT 1406 ACRES
 LOT 1407 ACRES
 LOT 1408 ACRES
 LOT 1409 ACRES
 LOT 1410 ACRES
 LOT 1411 ACRES
 LOT 1412 ACRES
 LOT 1413 ACRES
 LOT 1414 ACRES
 LOT 1415 ACRES
 LOT 1416 ACRES
 LOT 1417 ACRES
 LOT 1418 ACRES
 LOT 1419 ACRES
 LOT 1420 ACRES
 LOT 1421 ACRES
 LOT 1422 ACRES
 LOT 1423 ACRES
 LOT 1424 ACRES
 LOT 1425 ACRES
 LOT 1426 ACRES
 LOT 1427 ACRES
 LOT 1428 ACRES
 LOT 1429 ACRES
 LOT 1430 ACRES
 LOT 1431 ACRES
 LOT 1432 ACRES
 LOT 1433 ACRES
 LOT 1434 ACRES
 LOT 1435 ACRES
 LOT 1436 ACRES
 LOT 1437 ACRES
 LOT 1438 ACRES
 LOT 1439 ACRES
 LOT 1440 ACRES
 LOT 1441 ACRES
 LOT 1442 ACRES
 LOT 1443 ACRES
 LOT 1444 ACRES
 LOT 1445 ACRES
 LOT 1446 ACRES
 LOT 1447 ACRES
 LOT 1448 ACRES
 LOT 1449 ACRES
 LOT 1450 ACRES
 LOT 1451 ACRES
 LOT 1452 ACRES
 LOT 1453 ACRES
 LOT 1454 ACRES
 LOT 1455 ACRES
 LOT 1456 ACRES
 LOT 1457 ACRES
 LOT 1458 ACRES
 LOT 1459 ACRES
 LOT 1460 ACRES
 LOT 1461 ACRES
 LOT 1462 ACRES
 LOT 1463 ACRES
 LOT 1464 ACRES
 LOT 1465 ACRES
 LOT 1466 ACRES
 LOT 1467 ACRES
 LOT 1468 ACRES
 LOT 1469 ACRES
 LOT 1470 ACRES
 LOT 1471 ACRES
 LOT 1472 ACRES
 LOT 1473 ACRES
 LOT 1474 ACRES
 LOT 1475 ACRES
 LOT 1476 ACRES
 LOT 1477 ACRES
 LOT 1478 ACRES
 LOT 1479 ACRES
 LOT 1480 ACRES
 LOT 1481 ACRES
 LOT 1482 ACRES
 LOT 1483 ACRES
 LOT 1484 ACRES
 LOT 1485 ACRES
 LOT 1486 ACRES
 LOT 1487 ACRES
 LOT 1488 ACRES
 LOT 1489 ACRES
 LOT 1490 ACRES
 LOT 1491 ACRES
 LOT 1492 ACRES
 LOT 1493 ACRES
 LOT 1494 ACRES
 LOT 1495 ACRES
 LOT 1496 ACRES
 LOT 1497 ACRES
 LOT 1498 ACRES
 LOT 1499 ACRES
 LOT 1500 ACRES
 LOT 1501 ACRES
 LOT 1502 ACRES
 LOT 1503 ACRES
 LOT 1504 ACRES
 LOT 1505 ACRES
 LOT 1506 ACRES
 LOT 1507 ACRES
 LOT 1508 ACRES
 LOT 1509 ACRES
 LOT 1510 ACRES
 LOT 1511 ACRES
 LOT 1512 ACRES
 LOT 1513 ACRES
 LOT 1514 ACRES
 LOT 1515 ACRES
 LOT 1516 ACRES
 LOT 1517 ACRES
 LOT 1518 ACRES
 LOT 1519 ACRES
 LOT 1520 ACRES
 LOT 1521 ACRES
 LOT 1522 ACRES
 LOT 1523 ACRES
 LOT 1524 ACRES
 LOT 1525 ACRES
 LOT 1526 ACRES
 LOT 1527 ACRES
 LOT 1528 ACRES
 LOT 1529 ACRES
 LOT 1530 ACRES
 LOT 1531 ACRES
 LOT 1532 ACRES
 LOT 1533 ACRES
 LOT 1534 ACRES
 LOT 1535 ACRES
 LOT 1536 ACRES
 LOT 1537 ACRES
 LOT 1538 ACRES
 LOT 1539 ACRES
 LOT 1540 ACRES
 LOT 1541 ACRES
 LOT 1542 ACRES
 LOT 1543 ACRES
 LOT 1544 ACRES
 LOT 1545 ACRES
 LOT 1546 ACRES
 LOT 1547 ACRES
 LOT 1548 ACRES
 LOT 1549 ACRES
 LOT 1550 ACRES
 LOT 1551 ACRES
 LOT 1552 ACRES
 LOT 1553 ACRES
 LOT 1554 ACRES
 LOT 1555 ACRES
 LOT 1556 ACRES
 LOT 1557 ACRES
 LOT 1558 ACRES
 LOT 1559 ACRES
 LOT 1560 ACRES
 LOT 1561 ACRES
 LOT 1562 ACRES
 LOT 1563 ACRES
 LOT 1564 ACRES
 LOT 1565 ACRES
 LOT 1566 ACRES
 LOT 1567 ACRES
 LOT 1568 ACRES
 LOT 1569 ACRES
 LOT 1570 ACRES
 LOT 1571 ACRES
 LOT 1572 ACRES
 LOT 1573 ACRES
 LOT 1574 ACRES
 LOT 1575 ACRES
 LOT 1576 ACRES
 LOT 1577 ACRES
 LOT 1578 ACRES
 LOT 1579 ACRES
 LOT 1580 ACRES
 LOT 1581 ACRES
 LOT 1582 ACRES
 LOT 1583 ACRES
 LOT 1584 ACRES
 LOT 1585 ACRES
 LOT 1586 ACRES
 LOT 1587 ACRES
 LOT 1588 ACRES
 LOT 1589 ACRES
 LOT 1590 ACRES
 LOT 1591 ACRES
 LOT 1592 ACRES
 LOT 1593 ACRES
 LOT 1594 ACRES
 LOT 1595 ACRES
 LOT 1596 ACRES
 LOT 1597 ACRES
 LOT 1598 ACRES
 LOT 1599 ACRES
 LOT 1600 ACRES
 LOT 1601 ACRES
 LOT 1602 ACRES
 LOT 1603 ACRES
 LOT 1604 ACRES
 LOT 1605 ACRES
 LOT 1606 ACRES
 LOT 1607 ACRES
 LOT 1608 ACRES
 LOT 1609 ACRES
 LOT 1610 ACRES
 LOT 1611 ACRES
 LOT 1612 ACRES
 LOT 1613 ACRES
 LOT 1614 ACRES
 LOT 1615 ACRES
 LOT 1616 ACRES
 LOT 1617 ACRES
 LOT 1618 ACRES
 LOT 1619 ACRES
 LOT 1620 ACRES
 LOT 1621 ACRES
 LOT 1622 ACRES
 LOT 1623 ACRES
 LOT 1624 ACRES
 LOT 1625 ACRES
 LOT 1626 ACRES
 LOT 1627 ACRES
 LOT 1628 ACRES
 LOT 1629 ACRES
 LOT 1630 ACRES
 LOT 1631 ACRES
 LOT 1632 ACRES
 LOT 1633 ACRES
 LOT 1634 ACRES
 LOT 1635 ACRES
 LOT 1636 ACRES
 LOT 1637 ACRES
 LOT 1638 ACRES
 LOT 1639 ACRES
 LOT 1640 ACRES
 LOT 1641 ACRES
 LOT 1642 ACRES
 LOT 1643 ACRES
 LOT 1644 ACRES
 LOT 1645 ACRES
 LOT 1646 ACRES
 LOT 1647 ACRES
 LOT 1648 ACRES
 LOT 1649 ACRES
 LOT 1650 ACRES
 LOT 1651 ACRES
 LOT 1652 ACRES
 LOT 1653 ACRES
 LOT 1654 ACRES
 LOT 1655 ACRES
 LOT 1656 ACRES
 LOT 1657 ACRES
 LOT 1658 ACRES
 LOT 1659 ACRES
 LOT 1660 ACRES
 LOT 1661 ACRES
 LOT 1662 ACRES
 LOT 1663 ACRES
 LOT 1664 ACRES
 LOT 1665 ACRES
 LOT 1666 ACRES
 LOT 1667 ACRES
 LOT 1668 ACRES
 LOT 1669 ACRES
 LOT 1670 ACRES
 LOT 1671 ACRES
 LOT 1672 ACRES
 LOT 1673 ACRES
 LOT 1674 ACRES
 LOT 1675 ACRES
 LOT 1676 ACRES
 LOT 1677 ACRES
 LOT 1678 ACRES
 LOT 1679 ACRES
 LOT 1680 ACRES
 LOT 1681 ACRES
 LOT 1682 ACRES
 LOT 1683 ACRES
 LOT 1684 ACRES
 LOT 1685 ACRES
 LOT 1686 ACRES
 LOT 1687 ACRES
 LOT 1688 ACRES
 LOT 1689 ACRES
 LOT 1690 ACRES
 LOT 1691 ACRES
 LOT 1692 ACRES
 LOT 1693 ACRES
 LOT 1694 ACRES
 LOT 1695 ACRES
 LOT 1696 ACRES
 LOT 1697 ACRES
 LOT 1698 ACRES
 LOT 1699 ACRES
 LOT 1700 ACRES
 LOT 1701 ACRES
 LOT 1702 ACRES
 LOT 1703 ACRES
 LOT 1704 ACRES
 LOT 1705 ACRES
 LOT 1706 ACRES
 LOT 1707 ACRES
 LOT 1708 ACRES
 LOT 1709 ACRES
 LOT 1710 ACRES
 LOT 1711 ACRES
 LOT 1712 ACRES
 LOT 1713 ACRES
 LOT 1714 ACRES
 LOT 1715 ACRES
 LOT 1716 ACRES
 LOT 1717 ACRES
 LOT 1718 ACRES
 LOT 1719 ACRES
 LOT 1720 ACRES
 LOT 1721 ACRES
 LOT 1722 ACRES
 LOT 1723 ACRES
 LOT 1724 ACRES
 LOT 1725 ACRES
 LOT 1726 ACRES
 LOT 1727 ACRES
 LOT 1728 ACRES
 LOT 1729 ACRES
 LOT 1730 ACRES
 LOT 1731 ACRES
 LOT 1732 ACRES
 LOT 1733 ACRES
 LOT 1734 ACRES
 LOT 1735 ACRES
 LOT 1736 ACRES
 LOT 1737 ACRES
 LOT 1738 ACRES
 LOT 1739 ACRES
 LOT 1740 ACRES
 LOT 1741 ACRES
 LOT 1742 ACRES
 LOT 1743 ACRES
 LOT 1744 ACRES
 LOT 1745 ACRES
 LOT 1746 ACRES
 LOT 1747 ACRES
 LOT 1748 ACRES
 LOT 1749 ACRES
 LOT 1750 ACRES
 LOT 1751 ACRES
 LOT 1752 ACRES
 LOT 1753 ACRES
 LOT 1754 ACRES
 LOT 1755 ACRES
 LOT 1756 ACRES
 LOT 1757 ACRES
 LOT 1758 ACRES
 LOT 1759 ACRES
 LOT 1760 ACRES
 LOT 1761 ACRES
 LOT 1762 ACRES
 LOT 1763 ACRES
 LOT 1764 ACRES
 LOT 1765 ACRES
 LOT 1766 ACRES
 LOT 1767 ACRES
 LOT 1768 ACRES
 LOT 1769 ACRES
 LOT 1770 ACRES
 LOT 1771 ACRES
 LOT 1772 ACRES
 LOT 1773 ACRES
 LOT 1774 ACRES
 LOT 1775 ACRES
 LOT 1776 ACRES
 LOT 1777 ACRES
 LOT 1778 ACRES
 LOT 1779 ACRES
 LOT 1780 ACRES
 LOT 1781 ACRES
 LOT 1782 ACRES
 LOT 1783 ACRES
 LOT 1784 ACRES
 LOT 1785 ACRES
 LOT 1786 ACRES
 LOT 1787 ACRES
 LOT 1788 ACRES
 LOT 1789 ACRES
 LOT 1790 ACRES
 LOT 1791 ACRES
 LOT 1792 ACRES
 LOT 1793 ACRES
 LOT 1794 ACRES
 LOT 1795 ACRES
 LOT 1796 ACRES
 LOT 1797 ACRES
 LOT 1798 ACRES
 LOT 1799 ACRES
 LOT 1800 ACRES
 LOT 1801 ACRES
 LOT 1802 ACRES
 LOT 1803 ACRES
 LOT 1804 ACRES
 LOT 1805 ACRES
 LOT 1806 ACRES
 LOT 1807 ACRES
 LOT 1808 ACRES
 LOT 1809 ACRES
 LOT 1810 ACRES
 LOT 1811 ACRES
 LOT 1812 ACRES
 LOT 1813 ACRES
 LOT 1814 ACRES
 LOT 1815 ACRES
 LOT 1816 ACRES
 LOT 1817 ACRES
 LOT 1818 ACRES
 LOT 1819 ACRES
 LOT 1820 ACRES
 LOT 1821 ACRES
 LOT 1822 ACRES
 LOT 1823 ACRES
 LOT 1824 ACRES
 LOT 1825 ACRES
 LOT 1826 ACRES
 LOT 1827 ACRES
 LOT 1828 ACRES
 LOT 1829 ACRES
 LOT 1830 ACRES
 LOT 1831 ACRES
 LOT 1832 ACRES
 LOT 1833 ACRES
 LOT 1834 ACRES
 LOT 1835 ACRES
 LOT 1836 ACRES
 LOT 1837 ACRES
 LOT 1838 ACRES
 LOT 1839 ACRES
 LOT 1840 ACRES
 LOT 1841 ACRES
 LOT 1842 ACRES
 LOT 1843 ACRES
 LOT 1844 ACRES
 LOT 1845 ACRES
 LOT 1846 ACRES
 LOT 1847 ACRES
 LOT 1848 ACRES
 LOT 1849 ACRES
 LOT 1850 ACRES
 LOT 1851 ACRES
 LOT 1852 ACRES
 LOT 1853 ACRES
 LOT 1854 ACRES
 LOT 1855 ACRES
 LOT 1856 ACRES
 LOT 1857 ACRES
 LOT 1858 ACRES
 LOT 1859 ACRES
 LOT 1860 ACRES
 LOT 1861 ACRES
 LOT 1862 ACRES
 LOT 1863 ACRES
 LOT 1864 ACRES
 LOT 1865 ACRES
 LOT 1866 ACRES
 LOT 1867 ACRES
 LOT 1868 ACRES
 LOT 1869 ACRES
 LOT 1870 ACRES
 LOT 1871 ACRES
 LOT 1872 ACRES
 LOT 1873 ACRES
 LOT 1874 ACRES
 LOT 1875 ACRES
 LOT 1876 ACRES
 LOT 1877 ACRES
 LOT 1878 ACRES
 LOT 1879 ACRES
 LOT 1880 ACRES
 LOT 1881 ACRES
 LOT 1882 ACRES
 LOT 1883 ACRES
 LOT 1884 ACRES
 LOT 1885 ACRES
 LOT 1886 ACRES
 LOT 1887 ACRES
 LOT 1888 ACRES
 LOT 1889 ACRES
 LOT 1890 ACRES
 LOT 1891 ACRES
 LOT 1892 ACRES
 LOT 1893 ACRES
 LOT 1894 ACRES
 LOT 1895 ACRES
 LOT 1896 ACRES
 LOT 1897 ACRES
 LOT 1898 ACRES
 LOT 1899 ACRES
 LOT 1900 ACRES
 LOT 1901 ACRES
 LOT 1902 ACRES
 LOT 1903 ACRES
 LOT 1904 ACRES
 LOT 1905 ACRES
 LOT 1906 ACRES
 LOT 1907 ACRES
 LOT 1908 ACRES
 LOT 1909 ACRES
 LOT 1910 ACRES
 LOT 1911 ACRES
 LOT 1912 ACRES
 LOT 1913 ACRES
 LOT 1914 ACRES
 LOT 1915 ACRES
 LOT 1916 ACRES
 LOT 1917 ACRES
 LOT 1918 ACRES
 LOT 1919 ACRES
 LOT 1920 ACRES
 LOT 1921 ACRES
 LOT 1922 ACRES
 LOT 1923 ACRES
 LOT 1924 ACRES
 LOT 1925 ACRES
 LOT 1926 ACRES
 LOT 1927 ACRES
 LOT 1928 ACRES
 LOT 1929 ACRES
 LOT 1930 ACRES
 LOT 1931 ACRES
 LOT 1932 ACRES
 LOT 1933 ACRES
 LOT 1934 ACRES
 LOT 1935 ACRES
 LOT 1936 ACRES
 LOT 1937 ACRES
 LOT 1938 ACRES
 LOT 1939 ACRES
 LOT 1940 ACRES
 LOT 1941 ACRES
 LOT 1942 ACRES
 LOT 1943 ACRES
 LOT 1944 ACRES
 LOT 1945 ACRES
 LOT 1946 ACRES
 LOT 1947 ACRES
 LOT 1948 ACRES
 LOT 1949 ACRES
 LOT 1950 ACRES
 LOT 1951 ACRES
 LOT 1952 ACRES
 LOT 1953 ACRES
 LOT 1954 ACRES
 LOT 1955 ACRES
 LOT 1956 ACRES
 LOT 1957 ACRES
 LOT 1958 ACRES
 LOT 1959 ACRES
 LOT 1960 ACRES
 LOT 1961 ACRES
 LOT 1962 ACRES
 LOT 1963 ACRES
 LOT 1964 ACRES
 LOT 1965 ACRES
 LOT 1966 ACRES
 LOT 1967 ACRES
 LOT 1968 ACRES
 LOT 1969 ACRES
 LOT 1970 ACRES
 LOT 1971 ACRES
 LOT 1972 ACRES
 LOT 1973 ACRES
 LOT 1974 ACRES
 LOT 1975 ACRES
 LOT 1976 AC

RETURN TO:
RICHARD LONGWISH
THE DETROIT EDISON COMPANY
425 S. MAIN STREET, ROOM 332
ANN ARBOR, MI 48104