

1/24, 1990

For good and valuable consideration of system betterment, the undersigned hereby grant and convey to THE DETROIT EDISON COMPANY, a Michigan corporation of 2000 Second Avenue, Detroit, Michigan hereinafter referred to as "EDISON," the right to construct, reconstruct, modify, add to, operate and maintain underground line facilities consisting of poles, conduits, wires, cables, manholes, transformers and accessories required to provide electric service in, under, upon and across property located in the City of Ann Arbor, County of Washtenaw, State of Michigan, further described as:

Lot 8, Plymouth Professional Park, City of Ann Arbor, Washtenaw County, Michigan, according to the Plat thereof, as recorded in Liber 23 of Plats at Pages 30, 31 and 32, Washtenaw County Records. Being part of the Southwest 1/4 of Section 14, T2S, R6E.

RECORDED RIGHT OF WAY NO. 41282  
RECORDED  
WASHTENAW COUNTY MI  
DEC 27 2 51 PM '90  
PEGGY H. HAINES  
COUNTY CLERK/REGISTER

The route of underground line facilities is as shown on the attached drawing AS-6848 which is made a part hereof.

The right of way is Twelve (12) feet in width.

The rights hereby granted include the right of access to and from the rights of way and the right to trim, cut down or otherwise control trees, brush or roots of any kind either within the right of way or on property adjoining the right of way which in the opinion of EDISON interferes with the construction or operation of the line facilities. It is expressly understood and agreed that EDISON shall, at no time, trim or cut down any trees unless, in EDISON'S opinion, it is absolutely necessary to do so. EDISON shall restore premises to its original condition or as near as can be in the event of damages caused by its employes, contractors, vehicles and equipment entering premises for the purposes set forth herein.

No buildings or structures are to be placed within said right of way herein granted without the written consent of EDISON.

This grant is declared to be binding upon the heirs, successors, lessees, licensees and assigns of the parties hereto.

IN WITNESS WHEREOF the undersigned have hereunto set their hand(s) on the date of this agreement.

Witnesses:

Grantors:

Chris Grant  
CHRIS GRANT  
Jill D. Margenau  
JILL D. MARGENAU

PLYMOUTH SQUARE,  
A Louisiana Partnership  
W. C. MARTIN  
W. C. MARTIN  
1ST MARTIN CORP

*OVER*

Prepared by:

Address:

Curtis G. Noles  
2000 Second Avenue  
Detroit, MI 48226

115 Depot  
Ann Arbor, MI

STATE OF MICHIGAN

County of WASHTENAW SS

On this 24 day of JANUARY, 19 90, the foregoing instrument was acknowledged before me, a notary public in and for said county, by WILLIAM C. MARTIN AKA W.C. MARTIN

(a) general/managing partner(s), on behalf of PLYMOUTH SQUARE, A Louisiana Partnership.

JILL D. MARGENAU  
NOTARY PUBLIC - WASHTENAW COUNTY, MI  
MY COMMISSION EXPIRES 7-1-92

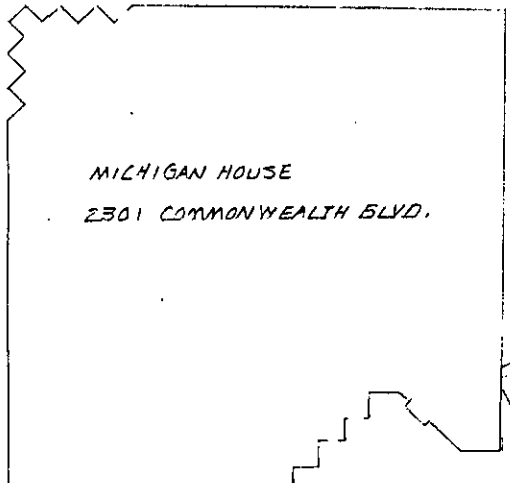
Jill D. Margenau  
Notary Public, WASHTENAW County, Michigan

My commission expires 7-1-92

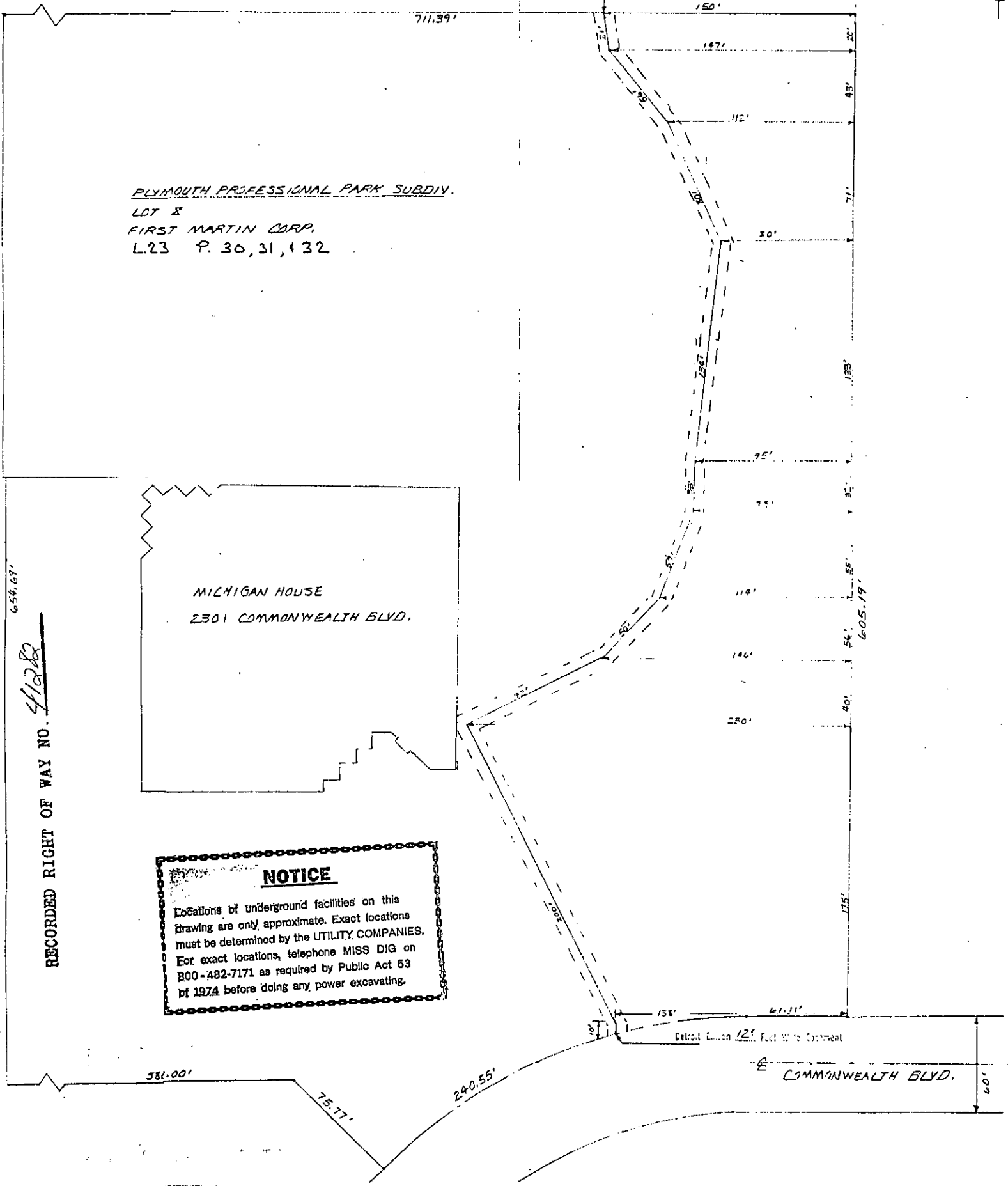
PROJECT NO.	8159 PHOENIX	DATE	12/28/88
CLIENT	PLANNING DEPARTMENT	SCALE	1" = 20'
PROJECT NAME	NEW OFFICE BUILDING	PROJECT NO.	8159 PHOENIX
PROJECT ADDRESS	2301 COMMONWEALTH BLVD.	PROJECT NO.	8159 PHOENIX
PROJECT CITY	ANN ARBOR	PROJECT NO.	8159 PHOENIX
PROJECT STATE	MICHIGAN	PROJECT NO.	8159 PHOENIX
PROJECT COUNTY	WASHTENAW	PROJECT NO.	8159 PHOENIX
PROJECT ZIP	48106	PROJECT NO.	8159 PHOENIX
PROJECT PHONE	734-769-2982	PROJECT NO.	8159 PHOENIX
PROJECT FAX	734-769-2982	PROJECT NO.	8159 PHOENIX
PROJECT EMAIL		PROJECT NO.	8159 PHOENIX
PROJECT WEBSITE		PROJECT NO.	8159 PHOENIX
PROJECT URL		PROJECT NO.	8159 PHOENIX
PROJECT CONTACT		PROJECT NO.	8159 PHOENIX
PROJECT CONTACT PHONE		PROJECT NO.	8159 PHOENIX
PROJECT CONTACT FAX		PROJECT NO.	8159 PHOENIX
PROJECT CONTACT EMAIL		PROJECT NO.	8159 PHOENIX
PROJECT CONTACT WEBSITE		PROJECT NO.	8159 PHOENIX
PROJECT CONTACT URL		PROJECT NO.	8159 PHOENIX
PROJECT CONTACT ADDRESS		PROJECT NO.	8159 PHOENIX
PROJECT CONTACT CITY		PROJECT NO.	8159 PHOENIX
PROJECT CONTACT STATE		PROJECT NO.	8159 PHOENIX
PROJECT CONTACT COUNTY		PROJECT NO.	8159 PHOENIX
PROJECT CONTACT ZIP		PROJECT NO.	8159 PHOENIX
PROJECT CONTACT PHONE		PROJECT NO.	8159 PHOENIX
PROJECT CONTACT FAX		PROJECT NO.	8159 PHOENIX
PROJECT CONTACT EMAIL		PROJECT NO.	8159 PHOENIX
PROJECT CONTACT WEBSITE		PROJECT NO.	8159 PHOENIX
PROJECT CONTACT URL		PROJECT NO.	8159 PHOENIX
PROJECT CONTACT ADDRESS		PROJECT NO.	8159 PHOENIX
PROJECT CONTACT CITY		PROJECT NO.	8159 PHOENIX
PROJECT CONTACT STATE		PROJECT NO.	8159 PHOENIX
PROJECT CONTACT COUNTY		PROJECT NO.	8159 PHOENIX
PROJECT CONTACT ZIP		PROJECT NO.	8159 PHOENIX
PROJECT CONTACT PHONE		PROJECT NO.	8159 PHOENIX
PROJECT CONTACT FAX		PROJECT NO.	8159 PHOENIX
PROJECT CONTACT EMAIL		PROJECT NO.	8159 PHOENIX
PROJECT CONTACT WEBSITE		PROJECT NO.	8159 PHOENIX
PROJECT CONTACT URL		PROJECT NO.	8159 PHOENIX
PROJECT CONTACT ADDRESS		PROJECT NO.	8159 PHOENIX
PROJECT CONTACT CITY		PROJECT NO.	8159 PHOENIX
PROJECT CONTACT STATE		PROJECT NO.	8159 PHOENIX
PROJECT CONTACT COUNTY		PROJECT NO.	8159 PHOENIX
PROJECT CONTACT ZIP		PROJECT NO.	8159 PHOENIX
PROJECT CONTACT PHONE		PROJECT NO.	8159 PHOENIX
PROJECT CONTACT FAX		PROJECT NO.	8159 PHOENIX
PROJECT CONTACT EMAIL		PROJECT NO.	8159 PHOENIX
PROJECT CONTACT WEBSITE		PROJECT NO.	8159 PHOENIX
PROJECT CONTACT URL		PROJECT NO.	8159 PHOENIX
PROJECT CONTACT ADDRESS		PROJECT NO.	8159 PHOENIX
PROJECT CONTACT CITY		PROJECT NO.	8159 PHOENIX
PROJECT CONTACT STATE		PROJECT NO.	8159 PHOENIX
PROJECT CONTACT COUNTY		PROJECT NO.	8159 PHOENIX
PROJECT CONTACT ZIP		PROJECT NO.	8159 PHOENIX
PROJECT CONTACT PHONE		PROJECT NO.	8159 PHOENIX
PROJECT CONTACT FAX		PROJECT NO.	8159 PHOENIX
PROJECT CONTACT EMAIL		PROJECT NO.	8159 PHOENIX
PROJECT CONTACT WEBSITE		PROJECT NO.	8159 PHOENIX
PROJECT CONTACT URL		PROJECT NO.	8159 PHOENIX
PROJECT CONTACT ADDRESS		PROJECT NO.	8159 PHOENIX
PROJECT CONTACT CITY		PROJECT NO.	8159 PHOENIX
PROJECT CONTACT STATE		PROJECT NO.	8159 PHOENIX
PROJECT CONTACT COUNTY		PROJECT NO.	8159 PHOENIX
PROJECT CONTACT ZIP		PROJECT NO.	8159 PHOENIX
PROJECT CONTACT PHONE		PROJECT NO.	8159 PHOENIX
PROJECT CONTACT FAX		PROJECT NO.	8159 PHOENIX
PROJECT CONTACT EMAIL		PROJECT NO.	8159 PHOENIX
PROJECT CONTACT WEBSITE		PROJECT NO.	8159 PHOENIX
PROJECT CONTACT URL		PROJECT NO.	8159 PHOENIX
PROJECT CONTACT ADDRESS		PROJECT NO.	8159 PHOENIX
PROJECT CONTACT CITY		PROJECT NO.	8159 PHOENIX
PROJECT CONTACT STATE		PROJECT NO.	8159 PHOENIX
PROJECT CONTACT COUNTY		PROJECT NO.	8159 PHOENIX
PROJECT CONTACT ZIP		PROJECT NO.	8159 PHOENIX
PROJECT CONTACT PHONE		PROJECT NO.	8159 PHOENIX
PROJECT CONTACT FAX		PROJECT NO.	8159 PHOENIX
PROJECT CONTACT EMAIL		PROJECT NO.	8159 PHOENIX
PROJECT CONTACT WEBSITE		PROJECT NO.	8159 PHOENIX
PROJECT CONTACT URL		PROJECT NO.	8159 PHOENIX
PROJECT CONTACT ADDRESS		PROJECT NO.	8159 PHOENIX
PROJECT CONTACT CITY		PROJECT NO.	8159 PHOENIX
PROJECT CONTACT STATE		PROJECT NO.	8159 PHOENIX
PROJECT CONTACT COUNTY		PROJECT NO.	8159 PHOENIX
PROJECT CONTACT ZIP		PROJECT NO.	8159 PHOENIX
PROJECT CONTACT PHONE		PROJECT NO.	8159 PHOENIX
PROJECT CONTACT FAX		PROJECT NO.	8159 PHOENIX
PROJECT CONTACT EMAIL		PROJECT NO.	8159 PHOENIX
PROJECT CONTACT WEBSITE		PROJECT NO.	8159 PHOENIX
PROJECT CONTACT URL		PROJECT NO.	8159 PHOENIX
PROJECT CONTACT ADDRESS		PROJECT NO.	8159 PHOENIX
PROJECT CONTACT CITY		PROJECT NO.	8159 PHOENIX
PROJECT CONTACT STATE		PROJECT NO.	8159 PHOENIX
PROJECT CONTACT COUNTY		PROJECT NO.	8159 PHOENIX
PROJECT CONTACT ZIP		PROJECT NO.	8159 PHOENIX
PROJECT CONTACT PHONE		PROJECT NO.	8159 PHOENIX
PROJECT CONTACT FAX		PROJECT NO.	8159 PHOENIX
PROJECT CONTACT EMAIL		PROJECT NO.	8159 PHOENIX
PROJECT CONTACT WEBSITE		PROJECT NO.	8159 PHOENIX
PROJECT CONTACT URL		PROJECT NO.	8159 PHOENIX
PROJECT CONTACT ADDRESS		PROJECT NO.	8159 PHOENIX
PROJECT CONTACT CITY		PROJECT NO.	8159 PHOENIX
PROJECT CONTACT STATE		PROJECT NO.	8159 PHOENIX
PROJECT CONTACT COUNTY		PROJECT NO.	8159 PHOENIX
PROJECT CONTACT ZIP		PROJECT NO.	8159 PHOENIX
PROJECT CONTACT PHONE		PROJECT NO.	8159 PHOENIX
PROJECT CONTACT FAX		PROJECT NO.	8159 PHOENIX
PROJECT CONTACT EMAIL		PROJECT NO.	8159 PHOENIX
PROJECT CONTACT WEBSITE		PROJECT NO.	8159 PHOENIX
PROJECT CONTACT URL		PROJECT NO.	8159 PHOENIX
PROJECT CONTACT ADDRESS		PROJECT NO.	8159 PHOENIX
PROJECT CONTACT CITY		PROJECT NO.	8159 PHOENIX
PROJECT CONTACT STATE		PROJECT NO.	8159 PHOENIX
PROJECT CONTACT COUNTY		PROJECT NO.	8159 PHOENIX
PROJECT CONTACT ZIP		PROJECT NO.	8159 PHOENIX
PROJECT CONTACT PHONE		PROJECT NO.	8159 PHOENIX
PROJECT CONTACT FAX		PROJECT NO.	8159 PHOENIX
PROJECT CONTACT EMAIL		PROJECT NO.	8159 PHOENIX
PROJECT CONTACT WEBSITE		PROJECT NO.	8159 PHOENIX
PROJECT CONTACT URL		PROJECT NO.	8159 PHOENIX
PROJECT CONTACT ADDRESS		PROJECT NO.	8159 PHOENIX
PROJECT CONTACT CITY		PROJECT NO.	8159 PHOENIX
PROJECT CONTACT STATE			

#8925-194727

PLYMOUTH PROFESSIONAL PARK SUBDIV.  
 LOT 8  
 FIRST MARTIN CORP.  
 L.23 P. 30, 31, 32



**NOTICE**  
 Locations of underground facilities on this drawing are only approximate. Exact locations must be determined by the UTILITY COMPANIES. For exact locations, telephone MISS DIG on 800-482-7171 as required by Public Act 53 of 1974 before doing any power excavating.



Page 3 of 3

DEED 8333 0333003 8333 2:39PM 12/27/90

006

RECORDED

WASHTENAW COUNTY MI

DEC 27 2 51 PM '90

PEGGY H. HAINES  
COUNTY CLERK/REGISTER

*Handwritten:*  
175  
ret /  
will call  
Matter X

RETURN TO:  
RICHARD LONGWISH  
THE DETROIT EDISON COMPANY  
425 S. MAIN STREET, ROOM 332  
ANN ARBOR, MI 48104





RECORDED RIGHT OF WAY NO. 41282

R 412 82