

STATE OF MICHIGAN
Office of the Michigan Public Utilities Commission, } ss.

I, J. Carl Sheil, Secretary of the Michigan Public Utilities Commission,

Do Hereby Certify, That I have compared the annexed copy of Permit No. U-3535

with the original permit

~~recorded in~~

and that it is a true and correct transcript therefrom, and of the whole of such original.

In Testimony Whereof, I have hereunto set my hand and affixed

the seal of the Commission, at Lansing, this 30th

day of March in the year of our Lord

one thousand nine hundred twenty-seven

J. Carl Sheil

Secretary, Michigan Public Utilities Commission.

2274

2274

RECORDED RIGHT OF WAY IN

34637

p 21

STATE OF MICHIGAN
BEFORE MICHIGAN PUBLIC UTILITIES COMMISSION

Standard Railroad Wire-Crossing Permit No. U-3535

In Re Application of Detroit Edison Company (Detroit)

Pursuant to Act No. 171 of the Session Laws of 1898, as amended, application having been made to Michigan Public Utilities Commission by said Detroit Edison Company

for permission to string wires across the tracks of the Wabash Railway Company

and said Detroit Edison Company

having conformed to the Commission's rules governing the filing of notices and issuing of permits for the construction of electrical lines and said rail way company having waived the right of notice and hearing provided for in said act

THEREFORE, It is ordered that said Detroit Edison Company

be permitted to string the following described wires across the tracks of said railroad at the following described place:

Village of Melvindale,) Wayne County,) Michigan:-)	150 ft. East of Dix Avenue, with: 3 - #4 copper wires, 120/240 volts, single-phase.
---	--

as indicated on the attached plans, when, as and if approved.

At the point of crossing said wires shall be constructed in accordance with this Commission's rules and regulations.

Given under our hands and the Official Seal of this Commission at the City of Lansing, State of Michigan, this 30th day of March A. D. 19 27.

MICHIGAN PUBLIC UTILITIES COMMISSION

By

.....
SHERMAN T. HANDY
Chairman,

.....
SAMUEL ODELL
Commissioner,

.....
SAMUEL D. PEPPER
Commissioner,

.....
ROLPH DUFF
Commissioner,

.....
SIDNEY E. DOYLE
Commissioner.

MEW

RECORDED RIGHT OF WAY NO.

34637
p 21

Судья
Судья
Судья
Судья

НА
МИНИСТЕРСТВО СЕЛЬСКОГО ХОЗЯЙСТВА
И ЛЕСНОГО ХОЗЯЙСТВА

У. Д. №
от
Генерального управления
Сельского хозяйства
и лесного хозяйства
С. Х. №

Вопрос о
дело №

Вопрос о
дело №

Вопрос о
дело №

Вопрос о
дело №

Вопрос о
дело №

Вопрос о
дело №

Судья

МИНИСТЕРСТВО СЕЛЬСКОГО ХОЗЯЙСТВА
И ЛЕСНОГО ХОЗЯЙСТВА

ДЕЛО №

Судья

DATA SHEET TO ACCOMPANY
DRAWING #RX-536

Name of Company

The Detroit Edison Company.

Name and Location of Crossing

Over the Wabash R.R. approximately 150' East of Dix Ave.,
or Raupp Rd., P.C.671, Village of Melvindale, Ecorse Twp.,
Wayne County, Michigan.

Circuits

Proposed one 120/240 volt, 60 cycle, 3 wire, single phase,
secondary circuit.

Poles

Poles (A), (B) & (C) 55' Idaho Cedar, 28" top circumference,
49" butt circumference at ground line set 7'-6" in clay soil.

Guy and Guy Attachments

One 1/2" Guy from pole (A) 46' above ground to anchor (E) 25'
from butt of pole (A).

One 1/2" Guy from pole (C) 46' above ground to anchor (G) 25'
from butt of pole (C).

One 1/2" Guy from pole (A) 45' above ground to anchor (F) 25'
from butt of pole (A).

One 3/8" Guy from pole (C) 45' above ground to anchor (H) 30'
from butt of pole (C).

All guy wire double galvanized stranded steel with a minimum
ultimate strength of 55,000 pounds per square inch.

Cross Arms

Proposed one 3 1/2" x 4 1/2" x 96" Douglas fir double cross arm
per crossing pole.

Proposed one 3 1/2" x 4 1/2" x 96" Douglas fir double buck arm on
poles (A) & (C).

Conductors

Proposed 3 #4 Medium hard drawn, solid, T.B.W.P. copper wires.

34637
P 21

DATA SHEET TO ACCOMPAN.
RAILROAD CROSSING DRAWINGS

Guy Clamps

One 1 5/8" x 6" three bolt galvanized steel clamp at each end, for 3/8" and 5/16" guys.
Two 1/2" Crosby guy clamps at each end, for 1/2" guys.

Guy Insulators

Two O.B.#26500 - 3 1/2" porcelain interlocking strain type insulators on 3/8" and 5/16" guys for 24,000 volt circuits and one per guy for lower voltages.
Two O.B.#25009 - 4" porcelain interlocking strain type insulators on 1/2" guys for 24,000 volt circuits and one per guy for lower voltages.

Guy Anchors

Four Blade "Everstick" on 1/2" guys buried 7' deep.
8" cone on 3/8" and 5/16" guys buried 6' deep.

Anchor Rods

3/4" x 8' round galvanized steel rods on "Everstick" anchors.
5/8" x 6' round galvanized steel rods on 8" Cone anchors.

Cross Arm Attachments

5/8" Galvanized steel center bolts.
5/8" Galvanized steel spacer bolts.
4" x 4" treated pine space blocks.
5/16" x 1 1/2" x 28" flat galvanized steel braces.
3/8" galvanized steel bolts at arm end of braces.
1/2" galvanized steel lag screws at pole end of braces.

Pins

1 3/4" x 14" x 1 3/8" locust pins for 24,000 volt circuits.
1 3/4" x 10 1/8" x 1" locust pins for all other circuits.

Insulators

One O.B.#11623 pin type and four Locke #8049 disc type insulators per wire, per crossing pole on 24,000 volt circuits. (One O.B.#11623 and two Locke #8049 for dead ends).
Two O.B.#12847 porcelain pin type insulators per wire, per crossing pole for 4,800 volt, 2,400 volt, series lighting, and private telephone circuits.
Two #20 Hemingray glass insulators per wire, per crossing pole for 120/240 volt secondary circuits.
One O.B.#12847 pin type and two Colonial #11940 disc type insulators per wire for #0000 primary circuits and one #20 Hemingray glass pin type and two #25009 strain type insulators per wire for #0000 secondary circuits, per crossing pole.

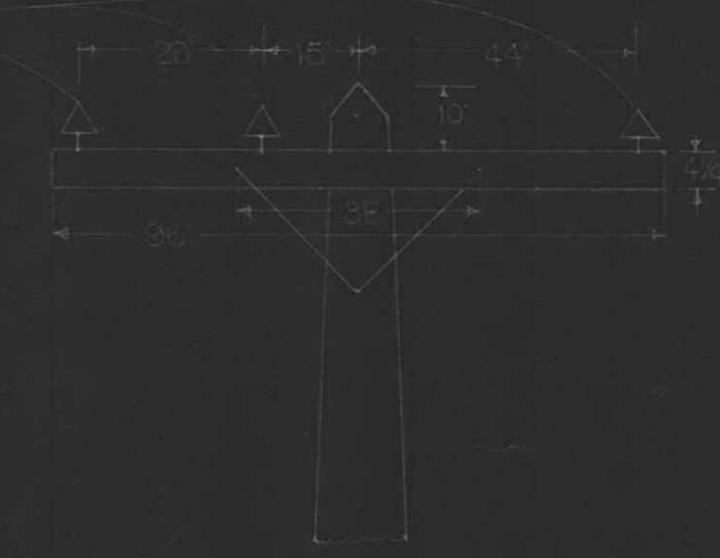
Ties

Standard top groove tie on 24,000 volt, 4,800 volt, 2,400 volt, series lighting and private telephone circuits.
Standard side groove tie on 120/240 volt secondary circuits.
#8 soft, solid, bare, copper tie wire for 24,000 volt circuits.
#6 soft, solid, weatherproof, copper tie wire on all other circuits.

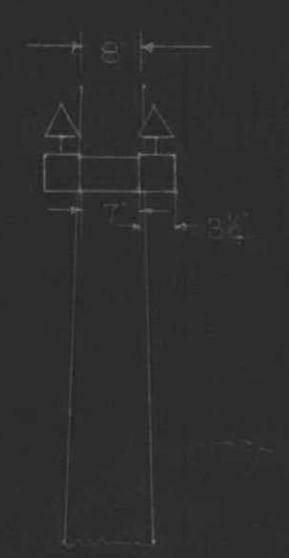
Checked by... *D. Burns* ...



PROPOSED 3/4
120/240 VOLT WIRES
(IMMEDIATE)

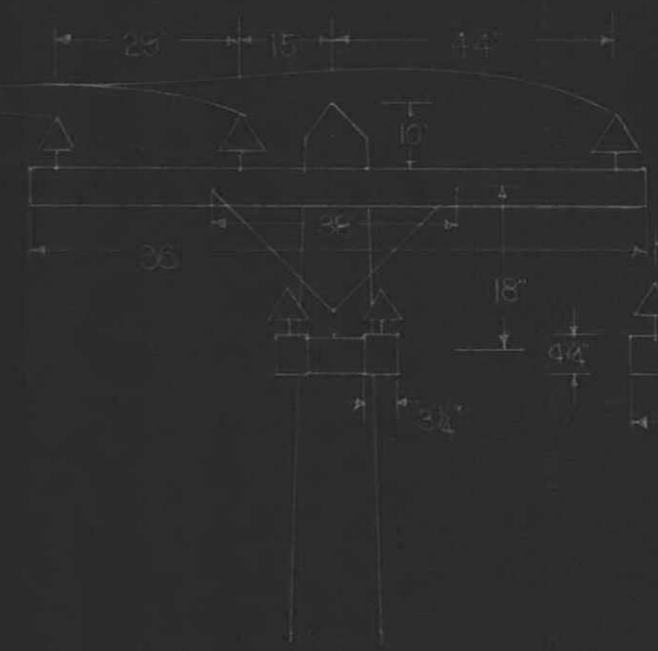


POLES B LOOKING NORTH



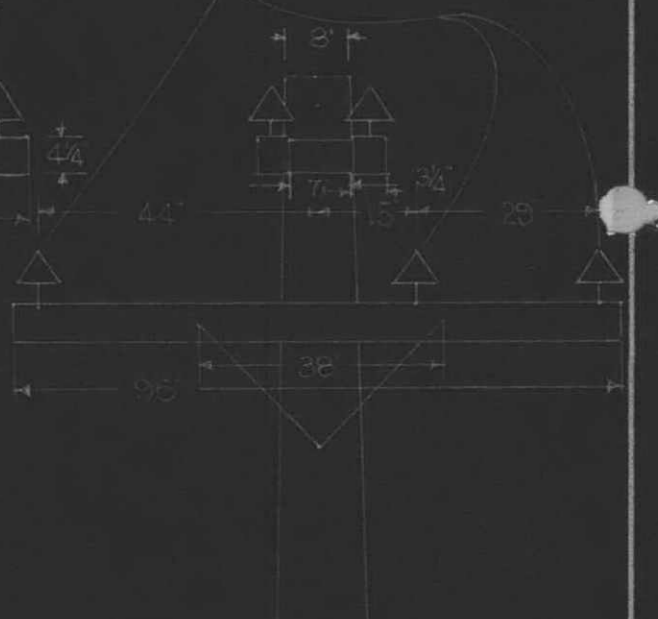
POLES B LOOKING WEST

PROPOSED 3/4
120/240 VOLT WIRES
(IMMEDIATE)



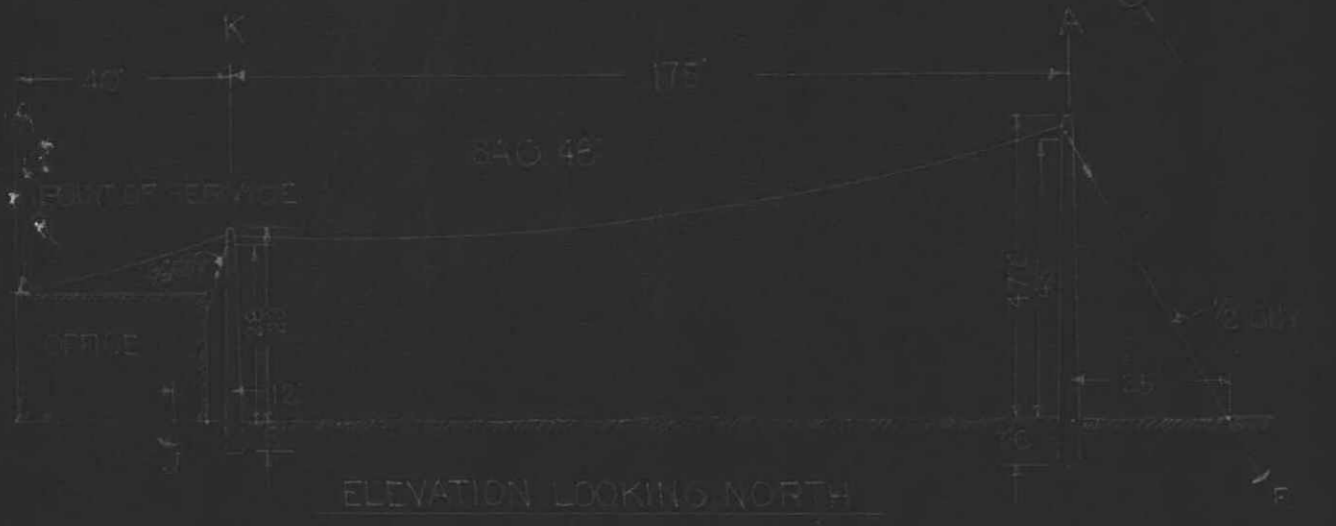
POLES A & B LOOKING NORTH

PROPOSED 3/4
120/240 VOLT WIRES
(IMMEDIATE)



POLES A & B LOOKING WEST

PLAN OF CROSSING

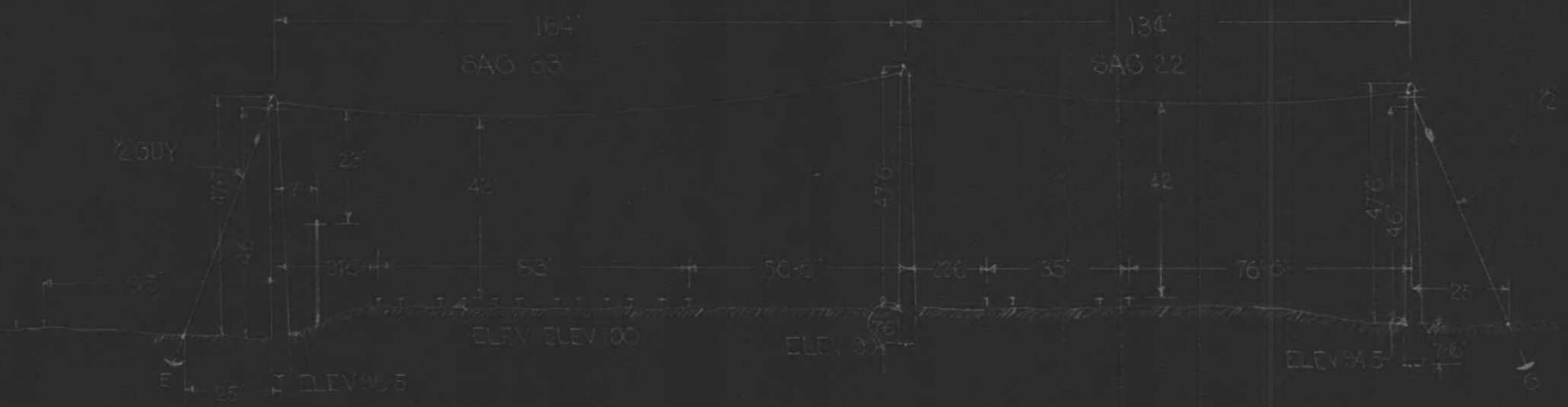


ELEVATION LOOKING NORTH



ELEVATION LOOKING NORTH

TYPICAL POLE TOP CONSTRUCTION



ELEVATION OF CROSSING LOOKING NORTHWEST

PURPOSE OF LINE
TEMPORARY LINE DURING
CONSTRUCTION OF GRADE
SEPARATION ON DIX AVE

APPROVED
FOR
MICHIGAN PUBLIC UTILITIES
COMMISSION
J. P. [Signature]
FILE 3535 DATE MAR 16 1927

VILLAGE MELWINDALE
CITY _____
COUNTY WAYNE
TOWNSHIP EDGEMONT
SURVEY NO. OF TWP. 2A 3 SOUTH
RANGE NO. 10 5 N EAST
SECTION NO. 20 2 W

THE DETROIT EDISON CO.
PLAN SUBMITTED TO MICH.
PUBLIC UTILITIES COMMISSION
FOR 120/240 VOLT CROSSING
OVER WABASH RR
DRAWN BY ECH DATE 3/16/27
CHECKED BY D.P. DATE 3/16/27

U-3535



154

MAR 14 1952

RECORDED RIGHT OF WAY NO. 34637
p21