

RECEIVED
MICHIGAN PUBLIC SERVICE
COMMISSION
APR 21 1955
SECRETARY'S OFFICE

THE DETROIT EDISON COMPANY

2000 SECOND AVENUE
DETROIT 26, MICHIGAN
April 20, 1955

APR 21 1955

Michigan Public Service Commission
Lansing 13, Michigan

Gentlemen:

The Detroit Edison Company, Detroit, Michigan, hereby makes application for authority to string the following wires over the tracks of the Wabash R.R. in the City of Detroit, Wayne County, Michigan.

(Span D-C) 3 #6 T.B.W.P. 4800 volt wires, 3 #4 T.B.W.P. 4800 volt wires and one 5/16" copperweld guy wire over the tracks of the Wabash Rd. located in Harbaugh Avenue at a point 275' north of Sire Avenue.

Foreign Wires: 2#6 T.B.W.P. Public Lighting Commission street lighting wires.

The proposed wire crossing will be constructed in accordance with specifications of the Michigan Public Service Commission and the construction standards of The Detroit Edison Company, approved by the Michigan Public Service Commission on July 19, 1939, File ED 2-9.01.

- Enclosed is a waiver of hearing granted by the Railroad Company.
- Waiver of hearing by the Railroad Company is covered by blanket waiver.
- This application covers reconstruction of existing crossing and will cancel and supersede wire crossing permit No. U-8379 dated 5-26-32.
- This is a new crossing.

Reference number of construction drawing is RX- 1083A.

Yours very truly,

L. G. Hedden
~~Director of Public Utilities~~ B M e
~~Director of Way Agency~~

L. G. Hedden
Supervisor
Rights of Way Procurement

Permit No. ED2-8-3622
Date April 25, 1955
By J. M. Hoppe
Acting Director of Public Utilities.

APR 22 1955
RIGHTS OF WAY
DEPARTMENT

✓ Check in square indicates statement applicable.

25

34637
P17

RECEIVED
MICHIGAN PUBLIC SERVICE
COMMISSION
JUN 20 1955
SECRETARY'S OFFICE

THE DETROIT EDISON COMPANY
2000 SECOND AVENUE
DETROIT 26, MICHIGAN

PUBLIC UTILITIES
Tel. _____ Gas _____
Elec. _____ Adm. _____
JUN 20 1955
R and S _____
File _____

Permit No. ED 2-9-3622
ED 2-9-3623

Michigan Public Service Commission
Lansing 13, Michigan

Gentlemen:

I, Lynn G. Hadden, Supervisor, Rights-of-Way Procurement
of The Detroit Edison Company, Detroit, Michigan, hereby certify that the wire
crossing, covered by Wire Crossing Permit No. ED 2-9-3622 & ED 2-9-3623,
issued 4-22-55, has been constructed in accordance with specifications
of the Michigan Public Service Commission and construction standards of The Detroit
Edison Company, approved by Michigan Public Service Commission on July 19, 1939,
file ED 2-9.01, and that this crossing will be maintained as provided in such
specifications and construction standards.

Yours very truly,

Lynn G. Hadden

RX No. 1003A
Location City of Detroit,
Wayne County
Railroad Wabash Railroad

Subscribed and sworn to before me this
16th day of June, 1955.
Juan M. Samuels
Notary Public, Wayne
County, Michigan.
My Commission expires April 16, 1957

Span B-C - In Harbaugh Ave., 275' N
of Sire Ave.
Span C-D - In Harbaugh Ave., 185' N
of Sire Ave.

JUN 21 AM 9 '57
REAL ESTATE AND
RIGHTS-OF-WAY DEPT.

34637
P17

THE DETROIT EDISON COMPANY

THE WABASH R.R.

RX 10531

PROPOSED LINE CROSSING OVER THE WABASH R.R. EXH 10 PERMIT NUMBER U-8379

IN HARSHUY AVE. 55, 185 AND 275 NORTH SIDE AVE. CITY OF DETROIT

SECTION _____ TOWNSHIP _____ COUNTY WAYNE

NOTES

MATERIALS SHALL BE AS NOTED IN THE DETROIT EDISON COMPANY'S STANDARD SPECIFICATIONS FOR OVERHEAD LINE CONSTRUCTION AT RAILROAD CROSSINGS DATED MARCH 1947. ACTUAL FIELD DIMENSIONS MAY VARY SOMEWHAT FROM THOSE SHOWN BUT THE REQUIREMENTS OF ORDER NO. 1679 OF MICHIGAN PUBLIC SERVICE COMMISSION, AS REVISED JAN. 1, 1944, WILL BE COMPLIED WITH.

MINIMUM CLEARANCES

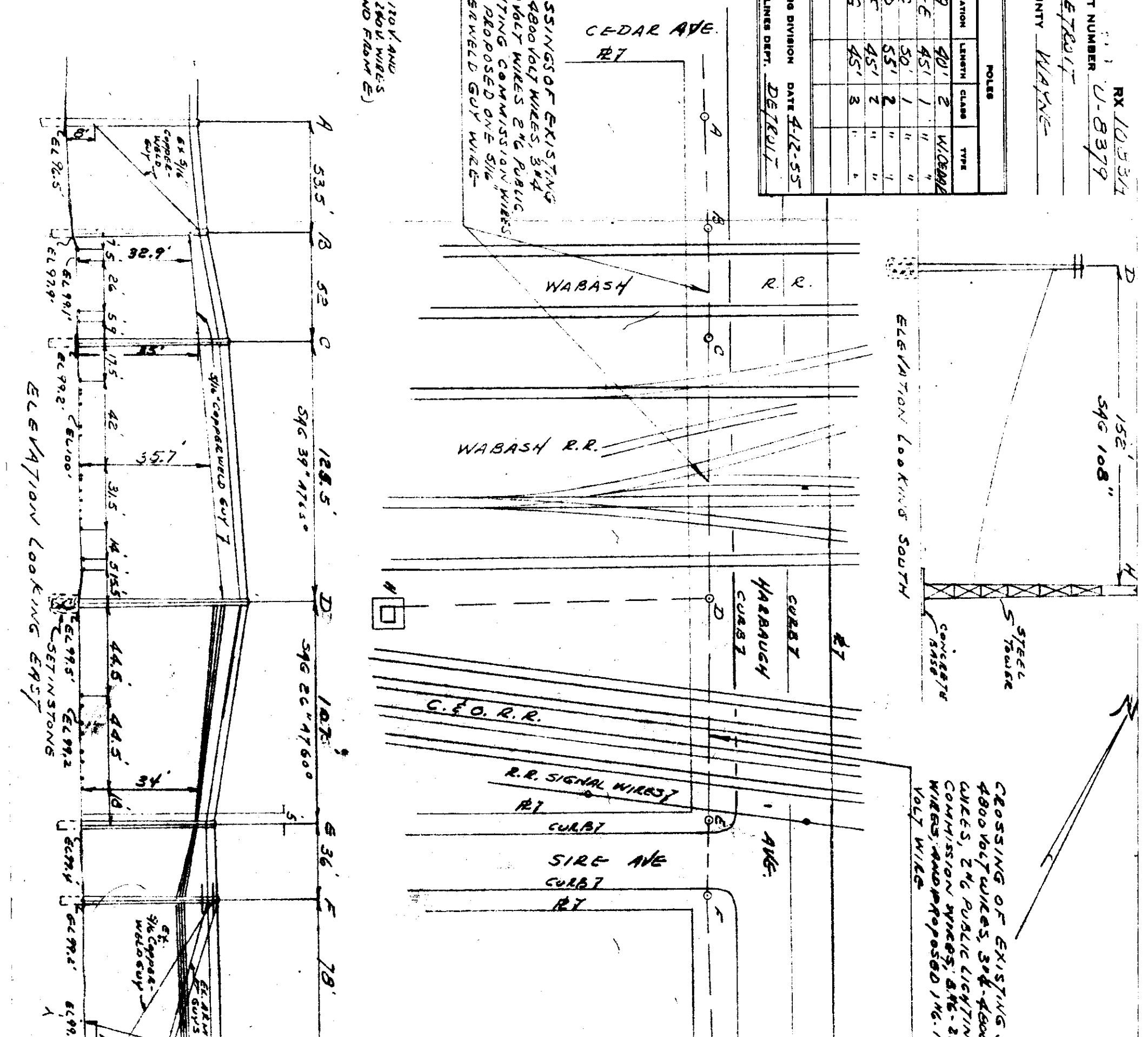
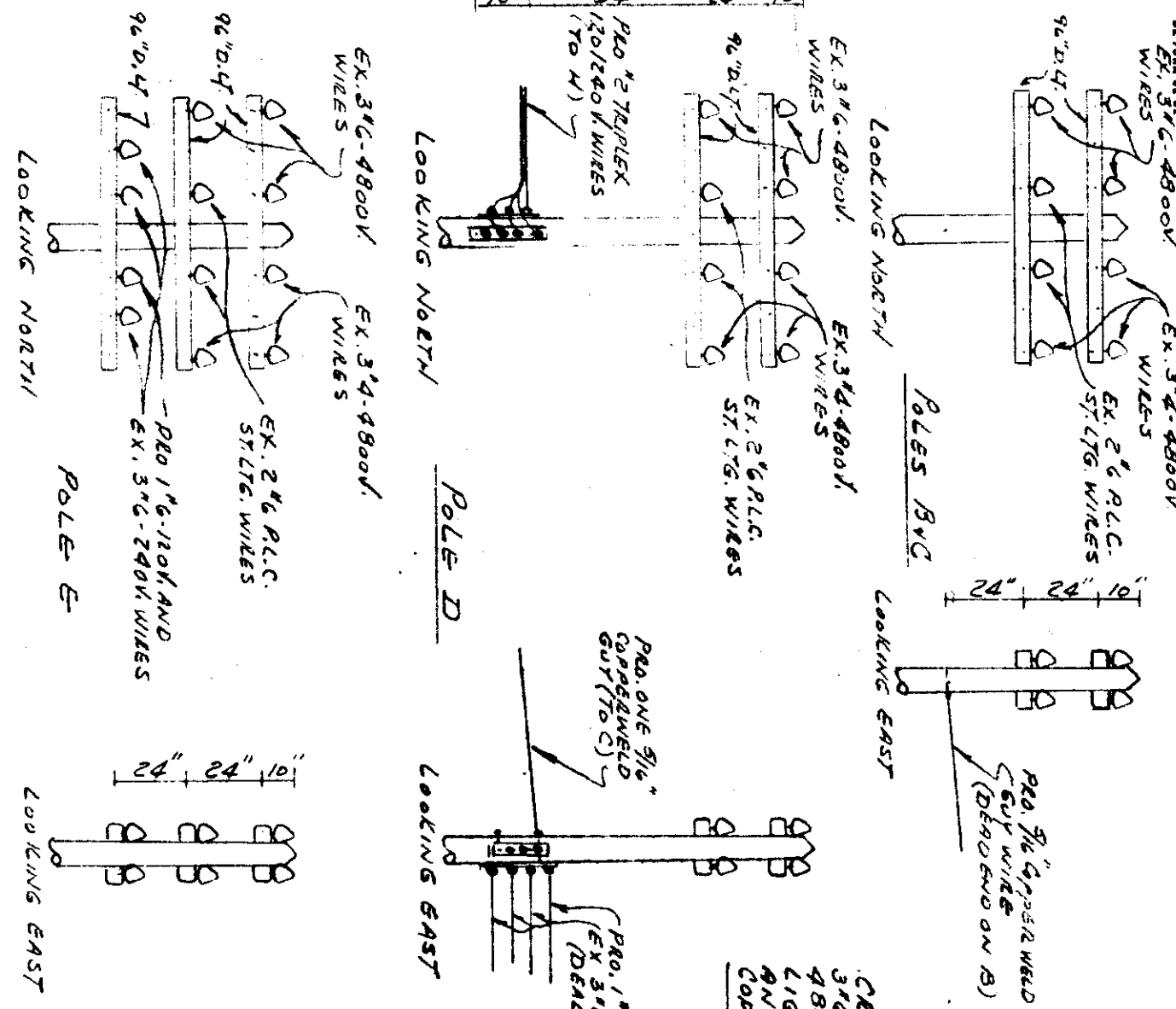
NEAREST POLE TO RAIL	SIDING	7 FT.
WIRE OVER TRACKS	MAIN LINE	18 FT.
		27 FT.
		28 FT.
		30 FT.
WIRE OVER R. R. SIGNAL		2 FT.
		4 FT.
		8 FT.

NUMBER	SIZE	KIND	VOLTAGE	LOCATION	LENGTH	CLASS	TYPE
3	1/2"	7800V	4800	A	40'	2	WIRE
3	1/2"	4800	4800	B-E	45'	1	"
2	1/2"	"	4800	C	50'	1	"
4	1/2"	"	120/240	D	55'	2	"
1	5/16"	COPPER WELD		F	45'	2	"
		GUY WIRE		G	45'	3	"

DRAWN BY J. WHITE ENGINEERING DIVISION DATE 4-12-55
ESTIMATOR E. BEHRENS OVERHEAD LINES DEPT. DETROIT

CROSSING OF EXISTING 316-4800 VOLT WIRES, 316-4800 VOLT WIRES, 216 PUBLIC LIGHTING COMMISSION WIRES AND PROPOSED ONE 5/16" COPPER WELD GUY WIRE.

CROSSING OF EXISTING 316-4800 VOLT WIRES, 316-4800 VOLT WIRES, 216 PUBLIC LIGHTING COMMISSION WIRES, 316-204 WIRES AND PROPOSED 116-120 VOLT WIRE.



ELEVATION LOOKING EAST

ELEVATION LOOKING SOUTH

WABASH R.R.

WABASH R.R.

C. & O. R.R.

R.R. SIGNAL WIRES

SIRE AVE

CURB

STEEL TOWER

CONCRETE BASE

WABASH CURB

CURB

CURB

CURB

CURB