

PUBLIC UTILITIES	
Tel.	Gas
Elec.	Adm.
JUL 12 1955	
R and S
File

MICHIGAN PUBLIC SERVICE COMMISSION
 JUL 12 1955
 SECRETARY'S OFFICE

THE DETROIT EDISON COMPANY

2000 SECOND AVENUE
DETROIT 26, MICHIGAN

July 11, 1955

Michigan Public Service Commission
Lansing 13, Michigan

Gentlemen:

The Detroit Edison Company, Detroit, Michigan, hereby makes application for authority to string the following wires over the tracks of the Grand Trunk Western R.R. in the Village of Washington, N.E. 1/4 of Section 33, Washington Twp., Macomb Co., T-4N, R-12E.

(Span A-B) Three #2 wpx - 4800 volt wires and two # 6 bare copperweld system communication wires over the tracks of the G.T.W.R.R. located in private property at a point 1511' northeast of West Rd and approximately 1350' west of the Earle Memorial Highway (M-53).

Note: There is to be no change in the number or size of the crossing conductors but pole A, the West crossing pole, is to be replaced with a 5' higher pole.

The proposed wire crossing will be constructed in accordance with specifications of the Michigan Public Service Commission and the construction standards of The Detroit Edison Company, approved by the Michigan Public Service Commission on July 19, 1939, File ED 2-9.01.

- Enclosed is a waiver of hearing granted by the Railroad Company.
- Waiver of hearing by the Railroad Company is covered by blanket waiver.
- This application covers reconstruction of existing crossing and will cancel and supersede wire crossing permit No ED 2-8-2570 dated 7-6-50.
- This is a new crossing.

Reference number of construction drawing is RX-2680 A.

Waiver of hearing from G.T.W. RR
File: 4730-Washington-9
dated 7-8-55

Yours very truly,
L. G. Hedden
~~XXXXXXXXXXXX~~
~~XXXXXXXXXXXX~~
L. G. Hedden
Supervisor
Rights of Way Procurement

Permit No. ED 2-8-3686
Date July 14, 1955
By J. M. Hoppe
Acting Director of Public Utilities

1955 JUL 15 AM 9
REAL ESTATE AND RIGHTS-OF-WAY DEPT.

✓ Check in square indicates statement applicable.

RECORDED RIGHT OF WAY NO. 34636 p 240

RECEIVED
MICHIGAN PUBLIC SERVICE
COMMISSION
JAN 13 1956
SECRETARY'S OFFICE

THE DETROIT EDISON COMPANY

2000 SECOND AVENUE
DETROIT 26, MICHIGAN
January 11, 1956

JAN 13 1956
No. 15
P. 11

Permit No. ED-2-8-3687

Michigan Public Service Commission
Lansing 13, Michigan

Gentlemen:

I, Lyman G. Hedden, Supervisor of Rights of Way
of The Detroit Edison Company, Detroit, Michigan, hereby certify that the wire
crossing, covered by Wire Crossing Permit No. ED-2-8-3687,
issued 7-14-55, has been constructed in accordance with specifications
of the Michigan Public Service Commission and construction standards of The Detroit
Edison Company, approved by Michigan Public Service Commission on July 19, 1939,
file ED 2-9.01, and that this crossing will be maintained as provided in such
specifications and construction standards.

Yours very truly,

Lyman G. Hedden
Supervisor of Rights of Way

RX No. ~~200928~~ 2680-A
Location Village of Washington
Washington Township
Macomb County
Railroad Grand Trunk
Western Railroad

Subscribed and sworn to before me this
11th day of January, 1956.
Joan M. Gamble
Notary Public, Wayne
County, Michigan.
My Commission expires April 16, 1957

Span F-G - In p.p. 1416' NE of West
Rd. & 1350' W of the Earle
Memorial Highway (M-53)

1956 JAN 20 AM 11 02
REAL ESTATE AND
RIGHTS-OF-WAY DEPT.

34636 p 240

RECORDED
MICHIGAN PUBLIC SERVICE
COMMISSION
JAN 13 1956
SECRETARY'S OFFICE

THE DETROIT EDISON COMPANY

2000 SECOND AVENUE
DETROIT 26, MICHIGAN

January 11, 1956

Permit No. ED-2-8-3686

Michigan Public Service Commission
Lansing 13, Michigan

Gentlemen:

I, Lyman G. Hedden, Supervisor of Rights of Way
of The Detroit Edison Company, Detroit, Michigan, hereby certify that the
wire crossing, covered by Wire Crossing Permit No. ED-2-8-3686,
issued 7-11-1955, has been constructed in accordance with
specifications of the Michigan Public Service Commission and construction
standards of The Detroit Edison Company, approved by Michigan Public
Service Commission on July 19, 1939, file ED 2-9.01, and that this crossing
will be maintained as provided in such specifications and construction
standards.

Yours very truly,

Lyman G. Hedden
Supervisor of Rights of Way

RX No. 2680-A

Location Village of Washington
Washington Township

Macomb County

Railroad Grand Trunk

Western Railroad

Span A-B - In p.p. 1511' NE of
West Rd. & approx. 1350'
W. of the Earle Memorial
Highway (M-53)

Subscribed and sworn to before me this
11th day of January, 1956.

Joan W. Gamble
Notary Public, Wayne
County, Michigan.

My Commission expires April 16, 1957

RECORDED RIGHT OF WAY NO.

34636
p 240

1956 JAN 20 AM 11 02
REAL ESTATE AND
RIGHTS-OF-WAY DEPT.

MICHIGAN PUBLIC SERVICE COMMISSION
JUL 12 1955

THE DETROIT EDISON COMPANY

2000 SECOND AVENUE
DETROIT 26, MICHIGAN
July 11, 1955

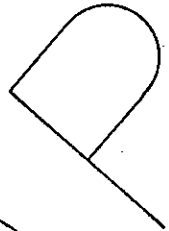
PUBLIC UTILITIES
Tel. _____ Gas _____
Elec. _____ Adm. _____
JUL 12 1955
R and S _____
Etc. _____

Michigan Public Service Commission
Lansing 13, Michigan

Gentlemen:

The Detroit Edison Company, Detroit, Michigan, hereby makes application for authority to string the following wires over the tracks of the Grand Trunk Western R.R. in the Village of Washington, N.E. 1/4 of Section 33, Washington Twp., Macomb Co., T-4N, R-12E.

(Span F-G) Three #0 bare copper - 40,000 volt wires over the track of the G.T.W.R.R. located in private property at a point 1416' north-east of West Rd and 1350' west of the Earle Memorial Highway (M-53).



The proposed wire crossing will be constructed in accordance with specifications of the Michigan Public Service Commission and the construction standards of The Detroit Edison Company, approved by the Michigan Public Service Commission on July 19, 1939, File ED 2-9.01.

- Enclosed is a waiver of hearing granted by the Railroad Company.
- Waiver of hearing by the Railroad Company is covered by blanket waiver.
- This application covers reconstruction of existing crossing and will cancel and supersede wire crossing permit No. _____ dated _____
- This is a new crossing.

Reference number of construction drawing is RX-2680 A.

G. T. W. RR waiver of hearing
File: 4730-Washington-9
dated 7-8-55, attached.

Yours very truly
L. G. Hedden

~~R. H. Taylor~~
~~Right of Way Agent~~
L. G. Hedden
Supervisor
Rights of Way Procurement

Permit No. ED2-8-3687

Date July 14, 1955

By *F. M. Stapp*
Acting Director of Public Utilities.

✓ Check in square indicates statement applicable.

1955 JUL 15 AM 9
REAL ESTATE AND RIGHTS-OF-WAY DEPT.

RECORDED RIGHT OF WAY NO. 34636 p 240

THE DETROIT EDISON COMPANY

RX 3680A

PROPOSED LINE CROSSING OVER THE AND TRUNK WESTERN R.R. EXISTING PERMIT NUMBER NEW CROSSING (F-G)
 P.L. PROP. 1416 AND 1511 N. EAST OF WEST RD AND VILLAGE
 IN APPROX 1350' W. OF EARLE MEMORIAL HWY. (M-33) CITY OF WASHINGTON
 SECTION 33 N.E. 1/4 TOWNSHIP WASHINGTON T. 4 N. R. 12 E. COUNTY MACOMB

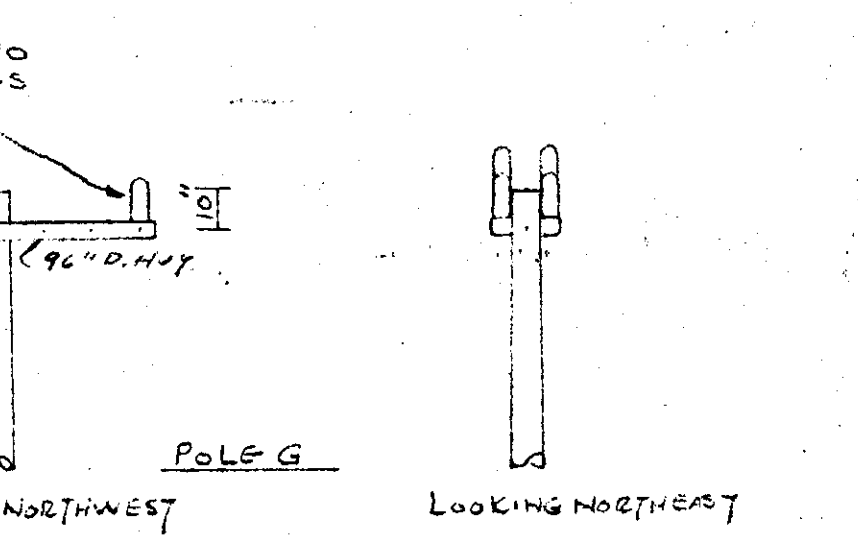
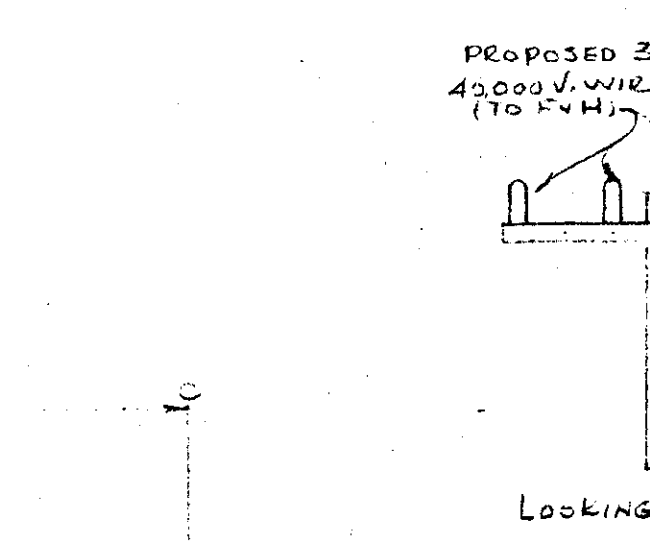
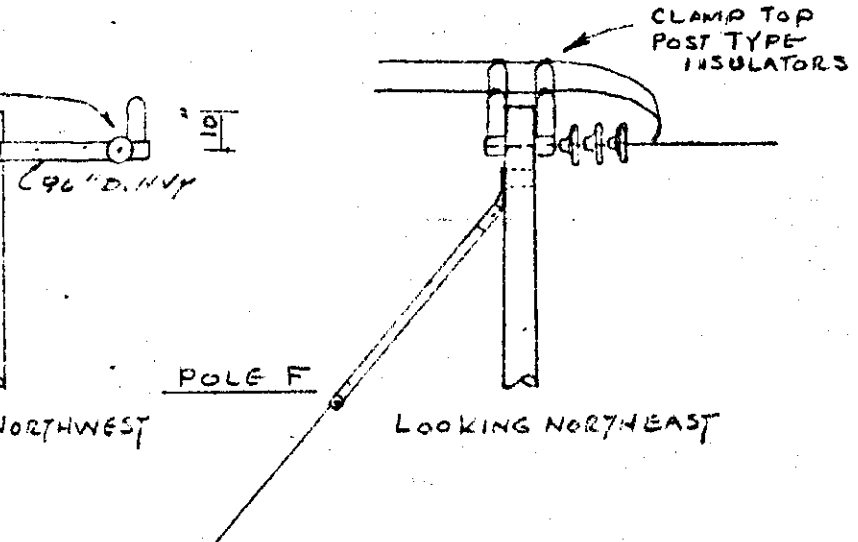
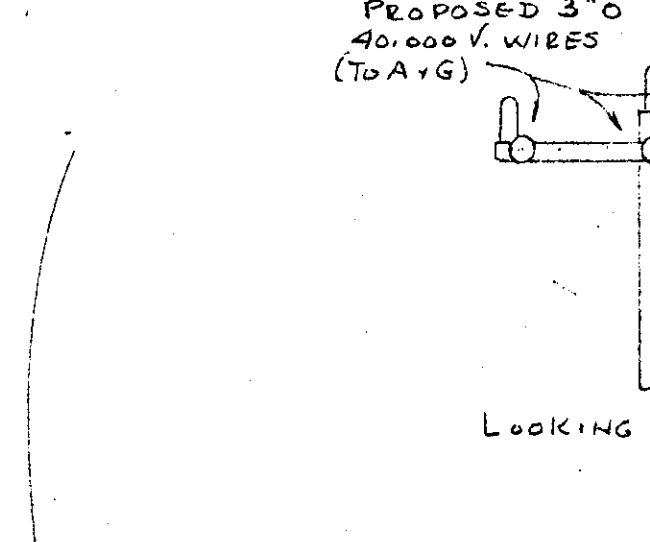
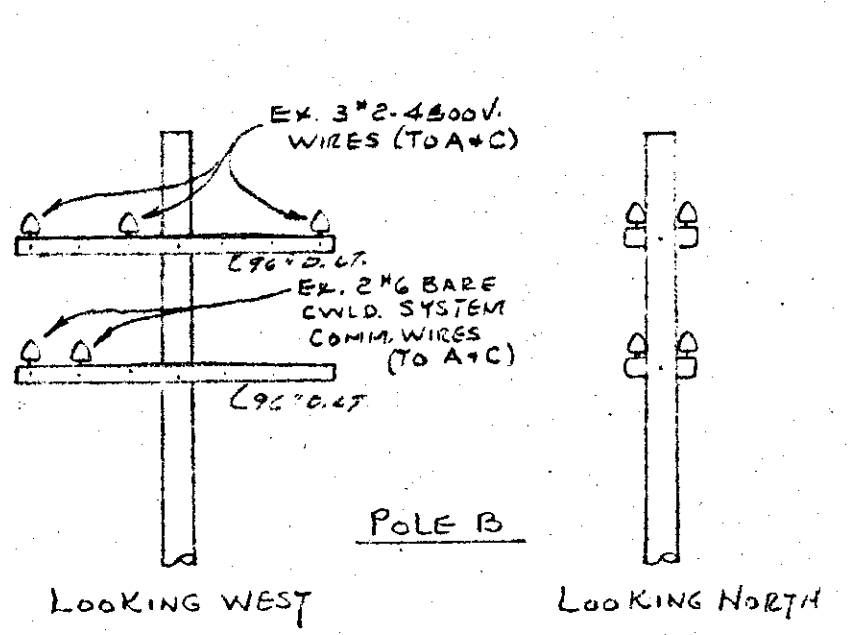
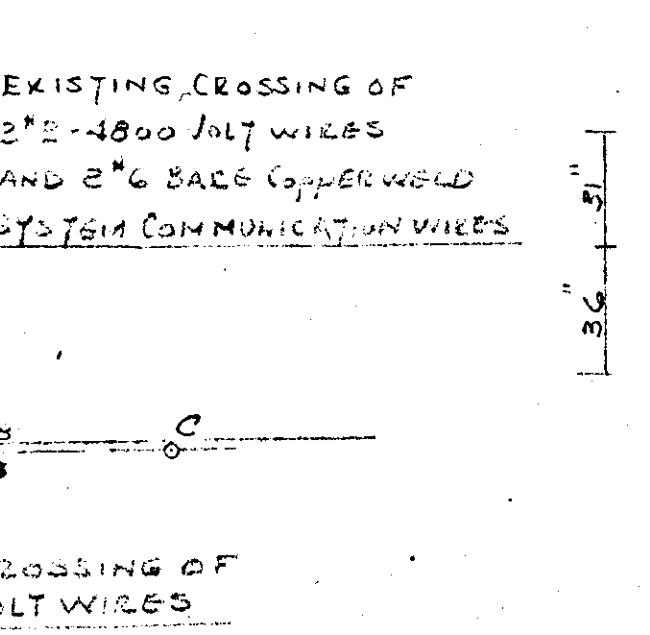
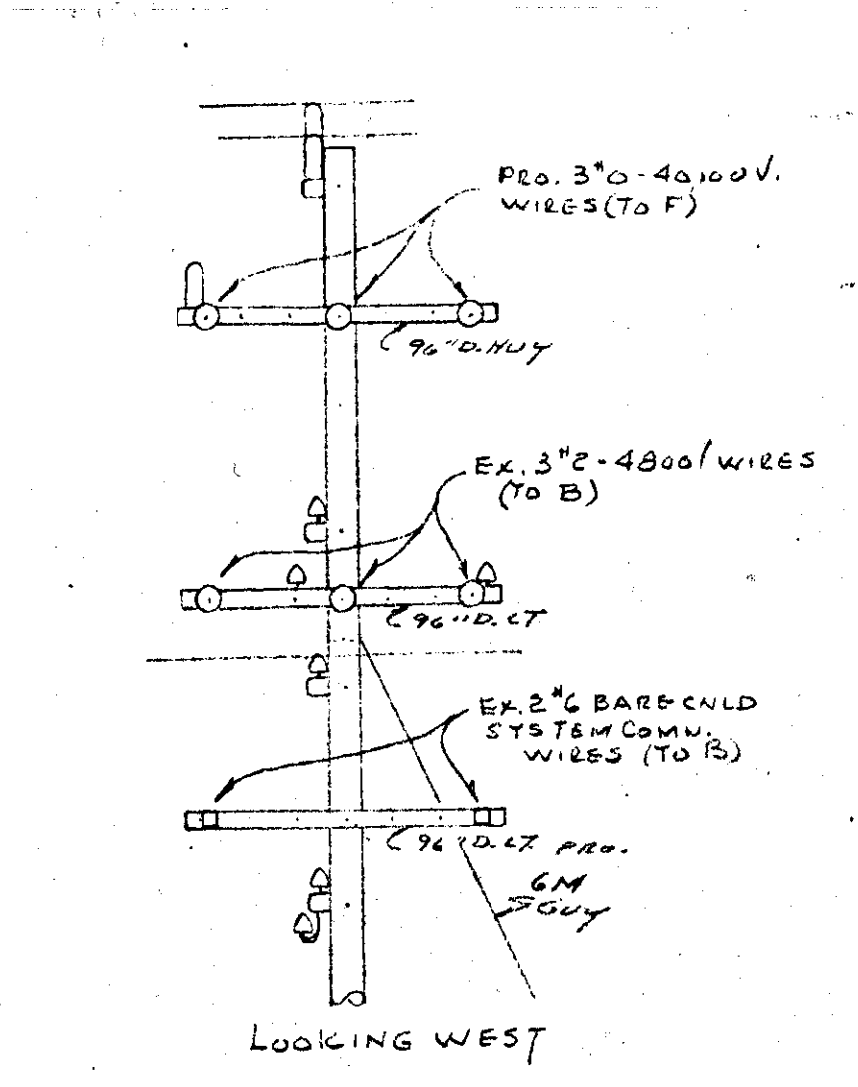
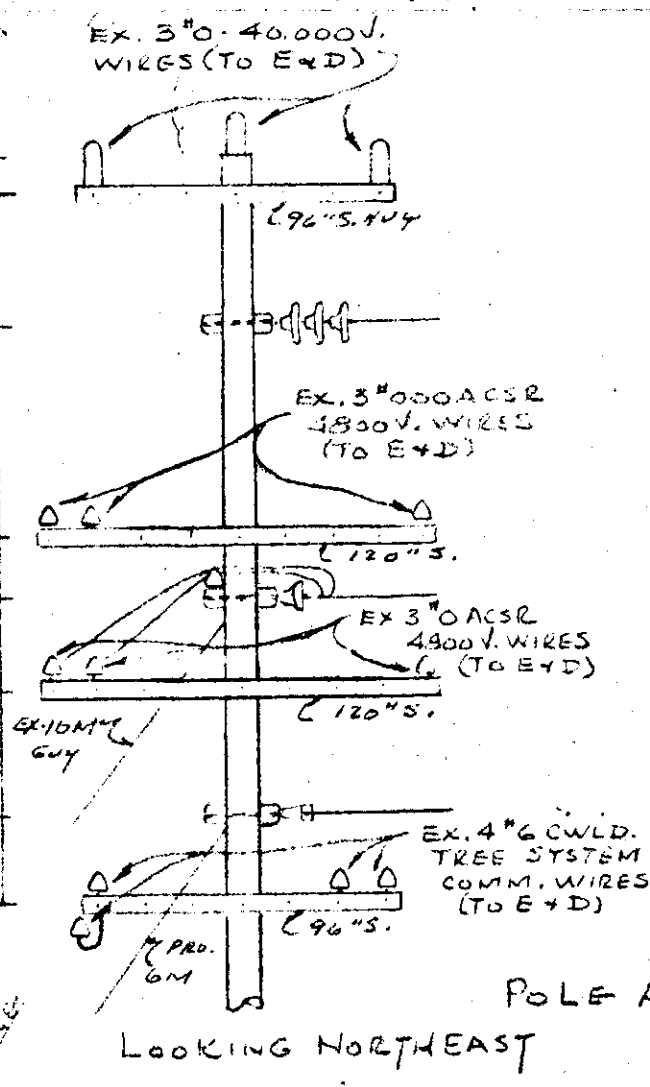
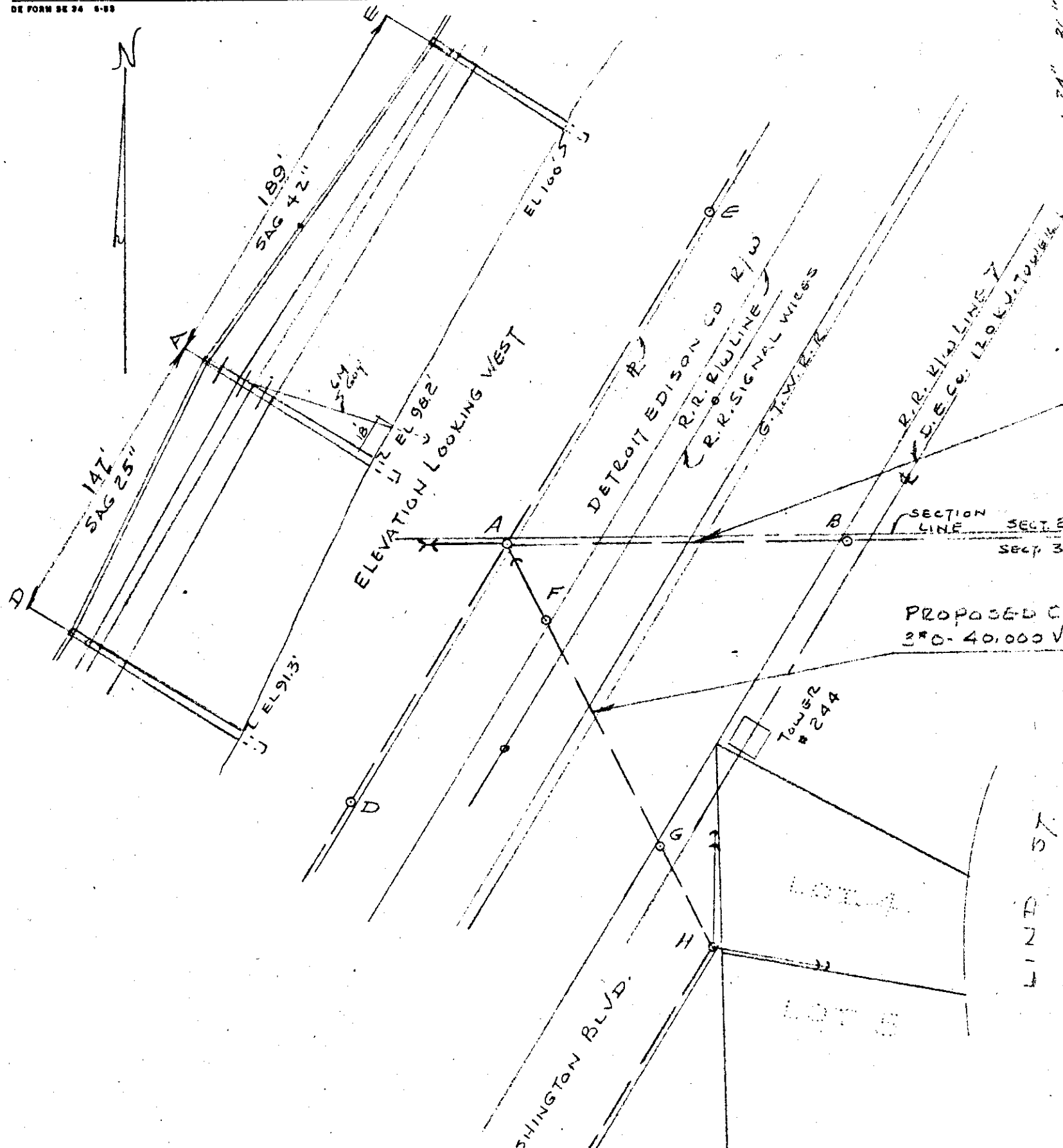
NOTES
 MATERIALS SHALL BE AS NOTED IN THE DETROIT EDISON COMPANY'S STANDARD SPECIFICATIONS FOR OVERHEAD LINE CONSTRUCTION AT RAILROAD CROSSINGS DATED MARCH 1947.
 ACTUAL FIELD DIMENSIONS MAY VARY SOMEWHAT FROM THOSE SHOWN BUT THE REQUIREMENTS OF ORDER NO. 1879 OF MICHIGAN PUBLIC SERVICE COMMISSION, AS REVISED JAN. 1, 1944, WILL BE COMPLIED WITH.

MINIMUM CLEARANCES

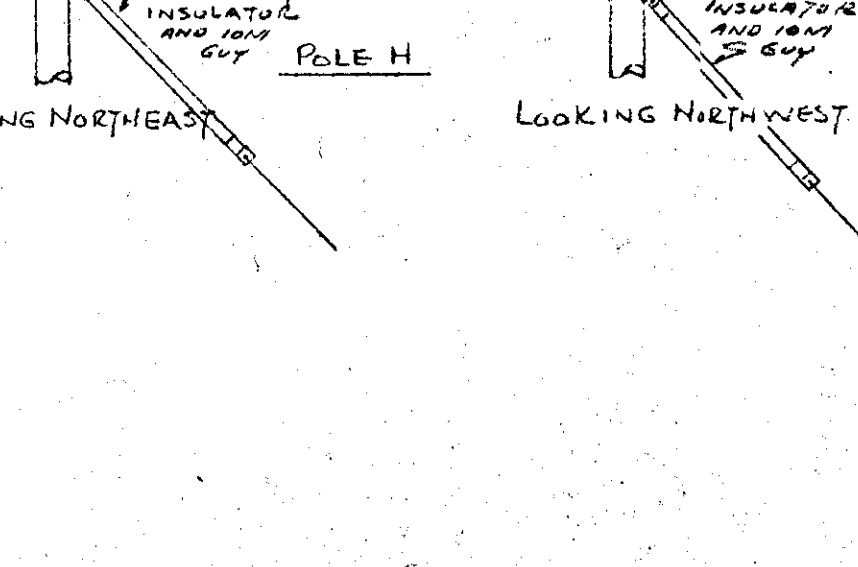
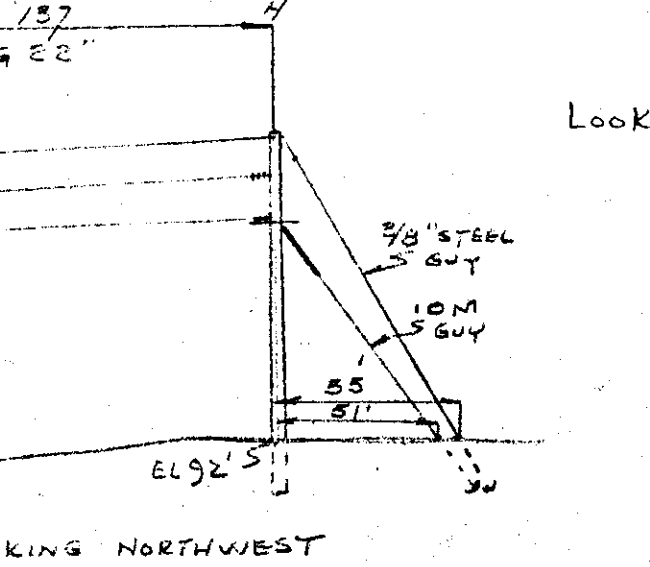
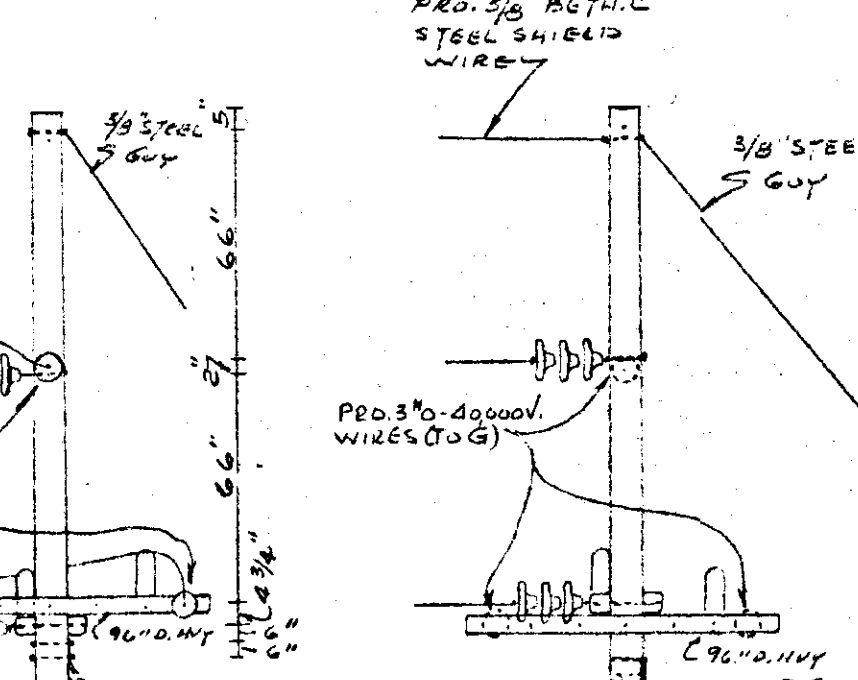
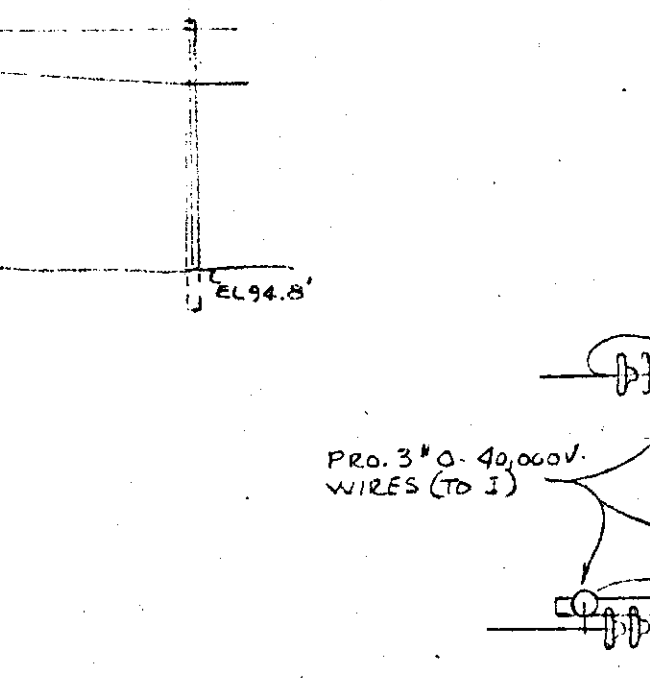
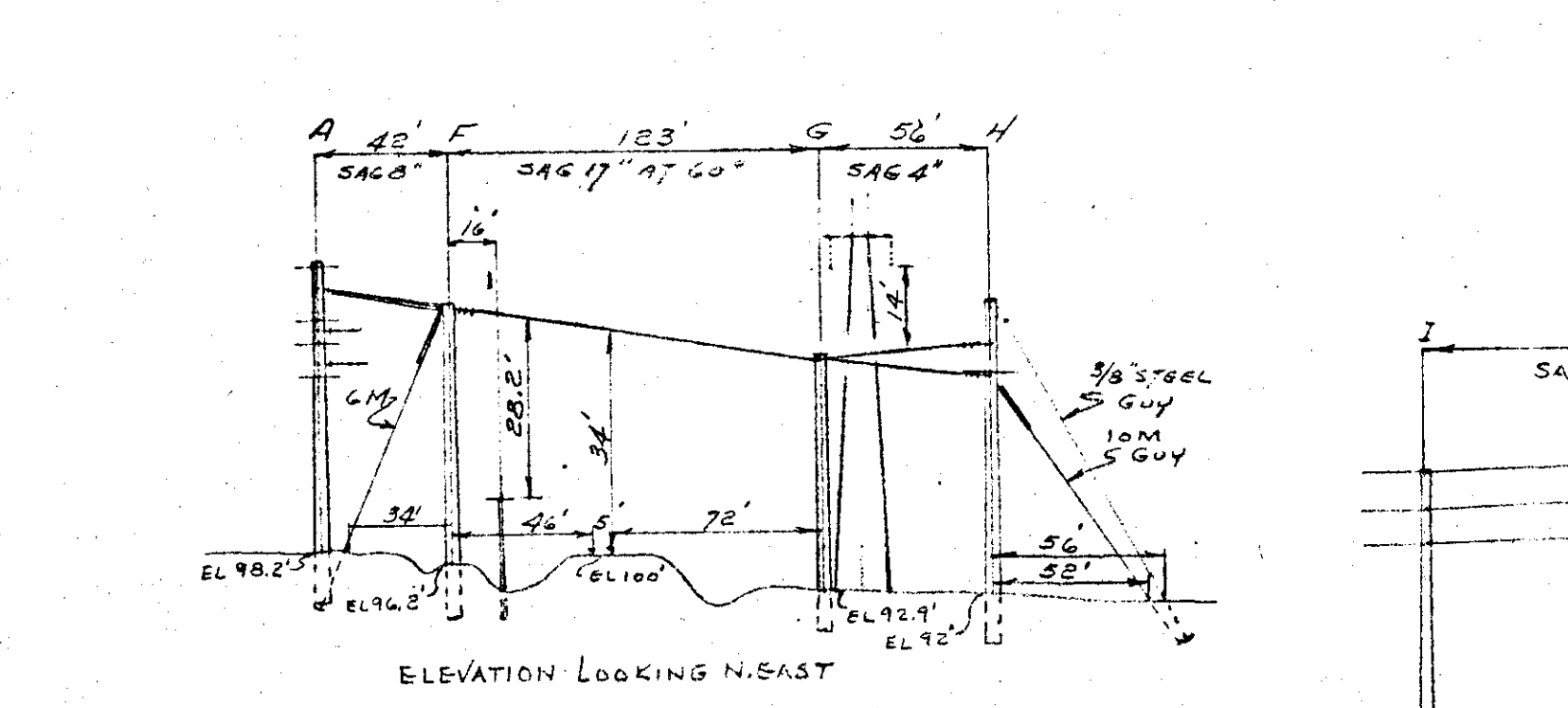
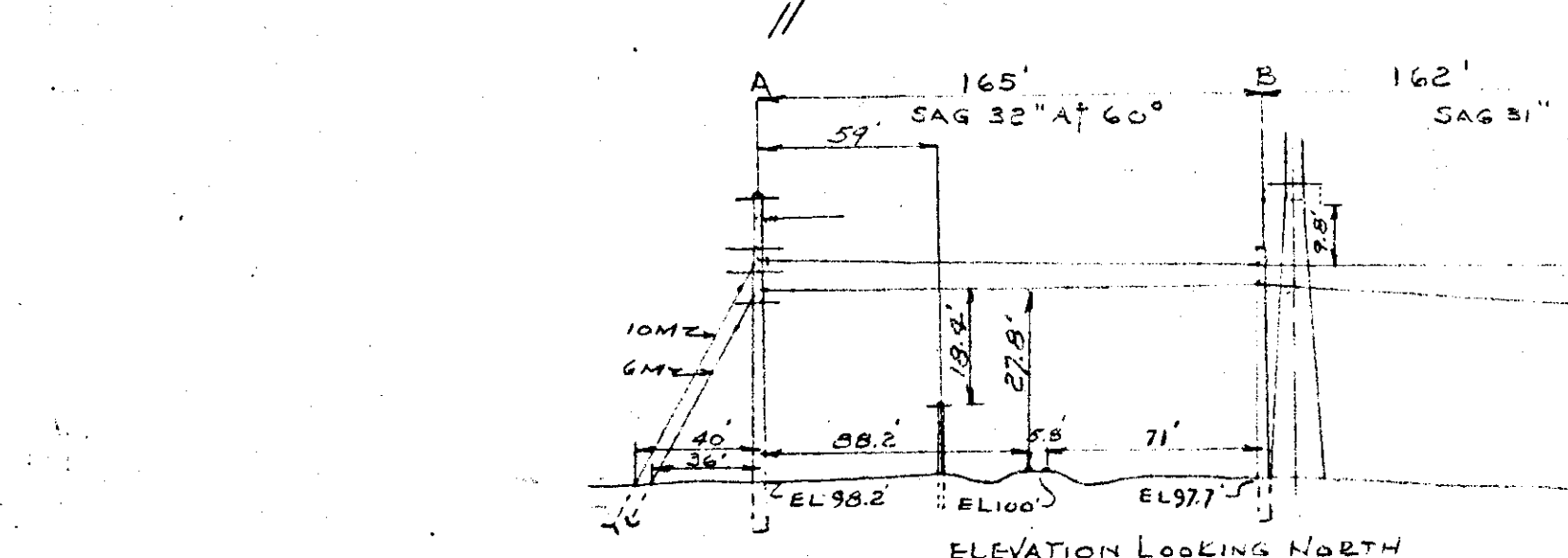
NEAREST POLE TO RAIL	SIDING	7 FT.
	MAIN LINE	12 FT.
WIRES OVER TRACKS	0 - 500 VOLTS	27 FT.
	500 - 7500 VOLTS	28 FT.
	24000 VOLTS	30 FT.
WIRES OVER R. R. SIGNAL	0 - 500 VOLTS	2 FT.
	500 - 7500 VOLTS	4 FT.
	24000 VOLTS	6 FT.

CONDUCTORS				POLES			
NUMBER	SIZE	KIND	VOLTAGE	LOCATION	LENGTH	CLASS	TYPE
SPAN A-B				A	55'	1	PINE
3	#6	W.P.C.	4800	B	45'	3	W.P.C.
2	#6	BASE COLD	4800	C	45'	6	"
SPAN F-G				E-I	55'	4	"
3	#0	BASE	40000	F	50'	3	"
				G	45'	3	"
				H	55'	6	"

DRAWN BY J. W. HYTE ENGINEERING DIVISION DATE 6-23-55
 ESTIMATOR R. HOLDEN OVERHEAD LINES DEPT. MTCLEHENS



RECORDED R/W FILE NO. 34636 P. 240



RECORDED RIGHT OF WAY NO. 34636 p 240