

STATE OF MICHIGAN

Office of the Michigan Public Utilities Commission, } ss.

I, J. Carl Sheil, Secretary of the Michigan Public Utilities Commission,

Do Hereby Certify, That I have compared the annexed copy of Permit No. U-5260

with the original permit

recorded in

and that it is a true and correct transcript therefrom, and of the whole of such original.

In Testimony Whereof, I have hereunto set my hand and affixed

the seal of the Commission, at Lansing, this 2nd

day of January in the year of our Lord

one thousand nine hundred twenty-nine

J. Carl Sheil
Secretary, Michigan Public Utilities Commission.

RECORDED RIGHT OF WAY NO. 34636

P 195

2785

2785

STATE OF MICHIGAN
BEFORE MICHIGAN PUBLIC UTILITIES COMMISSION

Standard Railroad Wire-Crossing Permit No. U-5260

In Re Application of **Detroit Edison Company (Detroit)**

Pursuant to Act No. 171 of the Session Laws of 1893, as amended, application having been made to Michigan Public Utilities Commission by said **Detroit Edison Company**

for permission to string wires across the tracks of the **Grand Trunk Railway System**

and said **Detroit Edison Company**

having conformed to the Commission's rules governing the filing of notices and issuing of permits for the construction of electrical lines and said rail way company having waived the right of notice and hearing provided for in said act

THEREFORE, It is ordered that said **Detroit Edison Company**

be permitted to string the following described wires across the tracks of said railroad at the following described place:

City of Royal Oak, Oakland County, Michigan:-	}	In North Maple Street, with: 1 - #6 copper wires, 4800 volts, single to three-phase; 2 - #6 copper wires, 5000 volts, street-lighting.
---	---	--

RECORDED RIGHT OF WAY NO. 34636
P195

as indicated on the attached plans, when, as and if approved.

At the point of crossing said wires shall be constructed in accordance with this Commission's rules and regulations.

Given under our hands and the Official Seal of this Commission at the City of Lansing, State of Michigan, this **2nd** day of **January** A. D. 19 **29**.

MICHIGAN PUBLIC UTILITIES COMMISSION
By

SIDNEY E. DOYLE
.....
Chairman,

JAMES BICE
.....
Commissioner,

BYRON P. HICKS
.....
Commissioner,

ROBERT H. DUNN
.....
Commissioner,

SAMUEL ODELL
.....
Commissioner.

Countersigned

J. Carl Shoil
.....
Secretary

RK - 899

DATA SHEET TO ACCOMPANY
DRAWING RX-899

Name of Company

The Detroit Edison Company.

Name and Location of Crossing

Over the G.T.R. in N. Maple St., approx. 200' south of Florence Ave.,
S.E. $\frac{1}{4}$ Sec. 16, Twp. 1 north, Range 11 East, City of Royal Oak,
Royal Oak Twp., Oakland County, Mich.

Circuits

Proposed one 4800 volt wire to convert existing 2 wire, single phase
circuit into a three wire, 3 phase circuit.
Existing one 5000 volt, 60 cycle, 2 wire series St.Ltg. circuit.

Poles

Poles (B) & (C) 45' Idaho Cedar, 28" top circumference, 45" butt
circumference at ground line set 6'-6" in clay soil.
Poles (A), (D) & (F) 40' Idaho Cedar, 28" top circumference, 43" butt
circumference at ground line set 6' in clay soil.

Guys and Guy Attachments

One 5/16" Guy from pole (B) 37' above ground to pole (A) 10' above
ground.
One 5/16" Guy from pole (A) 32' above ground to pole (B) 10' above
ground.
One 5/16" Guy from pole (C) 37' above ground to pole (D) 10' above
ground.
One 5/16" Guy from pole (D) 32' above ground to pole (C) 10' above
ground.

All Guy wire double galvanized stranded steel with a minimum ultimate
strength of 55,000 pounds per square inch.

Cross Arms

Existing one 3 $\frac{1}{4}$ " x 4 $\frac{1}{4}$ " x 96" Douglas Fir double cross arm per crossing
pole.
Existing one 3 $\frac{1}{4}$ " x 4 $\frac{1}{4}$ " x 96" Douglas Fir double buck arm on pole (C).

Conductors

Proposed 1 #6 Medium hard drawn solid T.B.W.P. copper wires.
Existing 4 #6 Medium hard drawn solid T.B.W.P. copper wires.

*Blanket
man*

*1923
J. J. [unclear]*

RECORDED RIGHT OF WAY NO.

34636

1945

DATA SHEET TO ACCOMPANY
RAILROAD CROSSING DRAWINGS

Guy Clamps

One 1 5/8" x 6" three bolts galvanized steel clamp at each end,
for 3/8" and 5/16" guys.
Two 1/2" Crosby guy clamps at each end, for 1/2" guys.

Guy Insulators

Two O.B.#26500 - 3 1/2" porcelain interlocking strain type insulators on
3/8" and 5/16" guys for 24,000 volt circuits and one per guy for lower
voltages.
Two O.B.#25009 - 4" porcelain interlocking strain type insulators on 1/2"
guys for 24,000 volt circuits and one per guy for lower voltages.

Guy Anchor

Four Blade "Everstick" on 1/2" Guys buried 7' deep.
8" Cone on 3/8" and 5/16" guys buried 6' deep.

Anchor Rods

3/4" x 8' round galvanized steel rods on "Everstick" anchors.
5/8" x 6' round galvanized steel rods on 8" Cone anchors.

Cross Arms Attachments

5/8" Galvanized steel center bolts.
5/8" Galvanized steel spacer bolts.
4" x 4" treated pine space blocks.
1/4" x 1 1/4" x 28" flat galvanized steel braces.
3/8" galvanized steel bolts at arm end of braces.
1/2" x 5" galvanized steel lag screws at pole end of braces.

Pins

1 1/4" x 14" x 1 3/8" locust pins for 24,000 volt circuits.
1 1/4" x 10-1/8" x 1" locust pins for all other circuits.

Insulators

One O.B.#11623 pin type and four Locke #8049 disc type insulators per
wire, per crossing pole on 24,000 volt circuits.
(One O.B.#11623 and two Locke #8049 for dead ends).
Two O.B.#12547 porcelain pin type insulators per wire, per crossing
pole for 4,800 volt, 2,400 volt, series lighting and private
telephone circuits.
Two #20 Hemingray glass insulators per wire, per crossing pole for
120/240 volt secondary circuits.
One O.B.#12847 pin type and two Colonial #11940 disc type insulators
per wire for #0000 primary circuits and one #20 Hemingray glass pin
type and two #25009 strain type insulators per wire for #0000
secondary circuits per crossing pole.

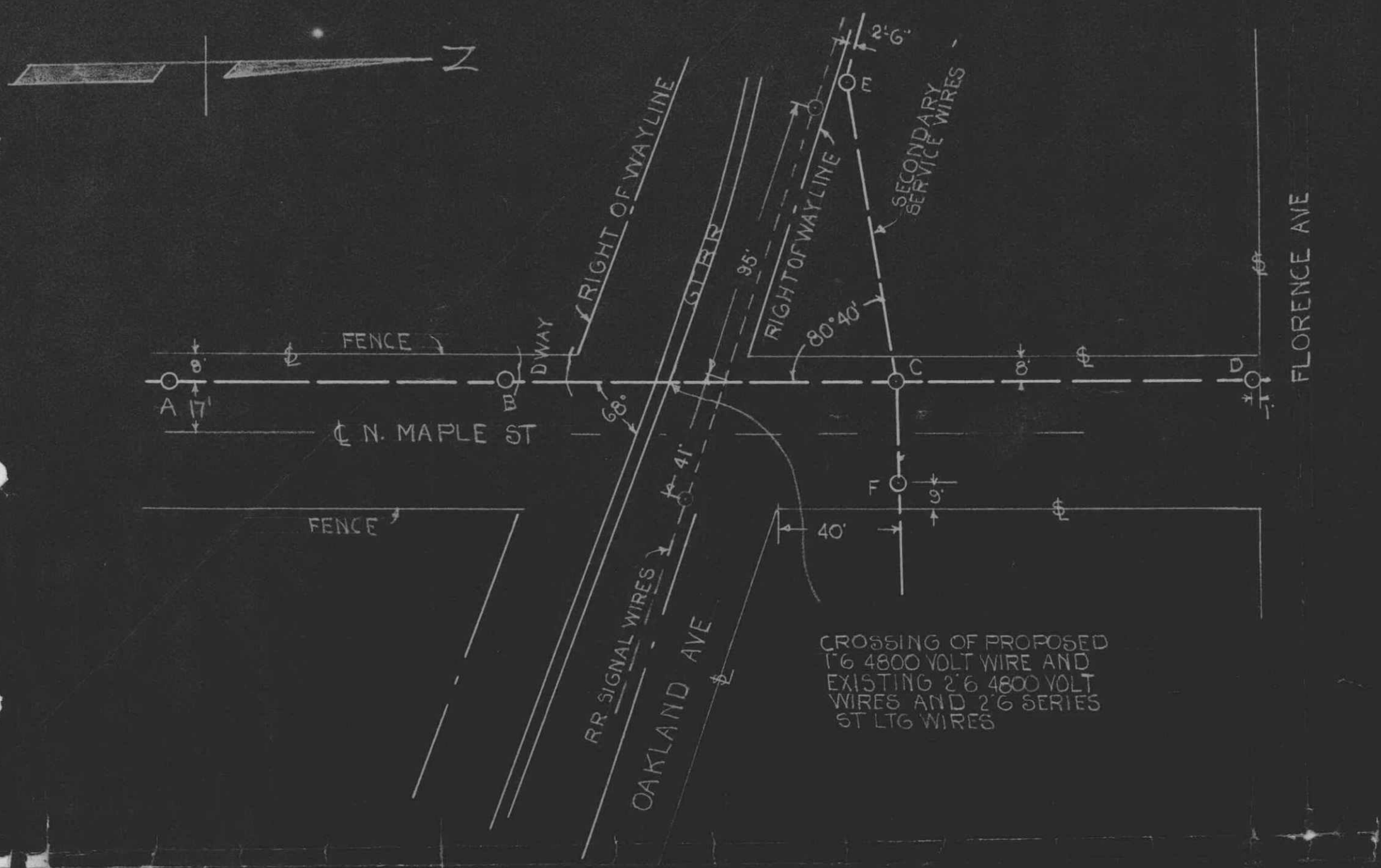
Ties

Standard top groove tie on 24,000 volt, 4,800 volt, 2,400 volt,
series lighting and private telephone circuits.
Standard side groove tie on 120/240 volt secondary circuits.
#8 soft, solid, bare copper tie wire for 24,000 volt circuits.
#6 soft, solid, weatherproof copper tie wires on all other circuits.

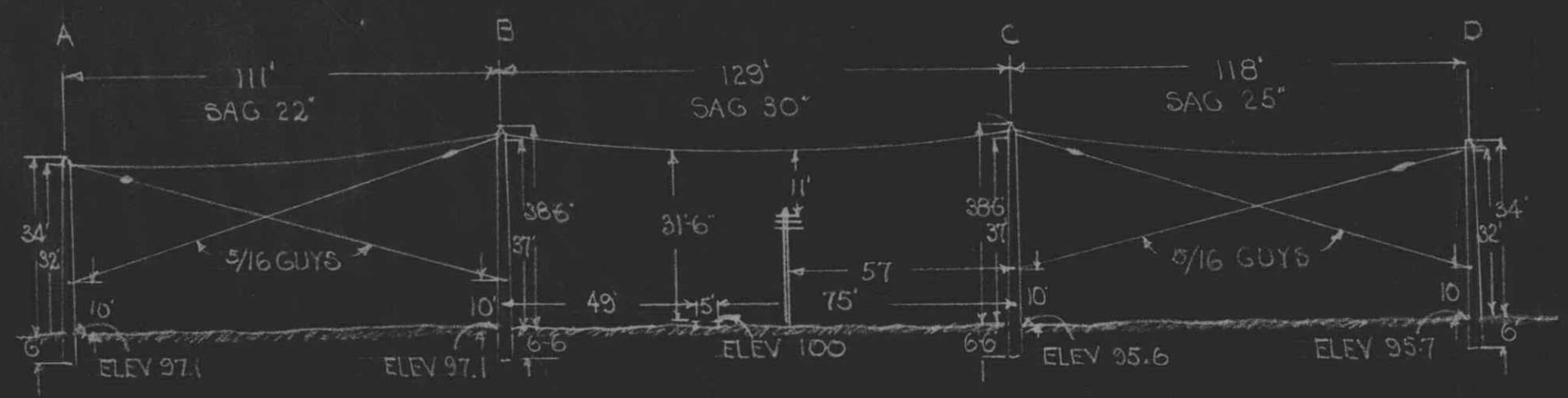
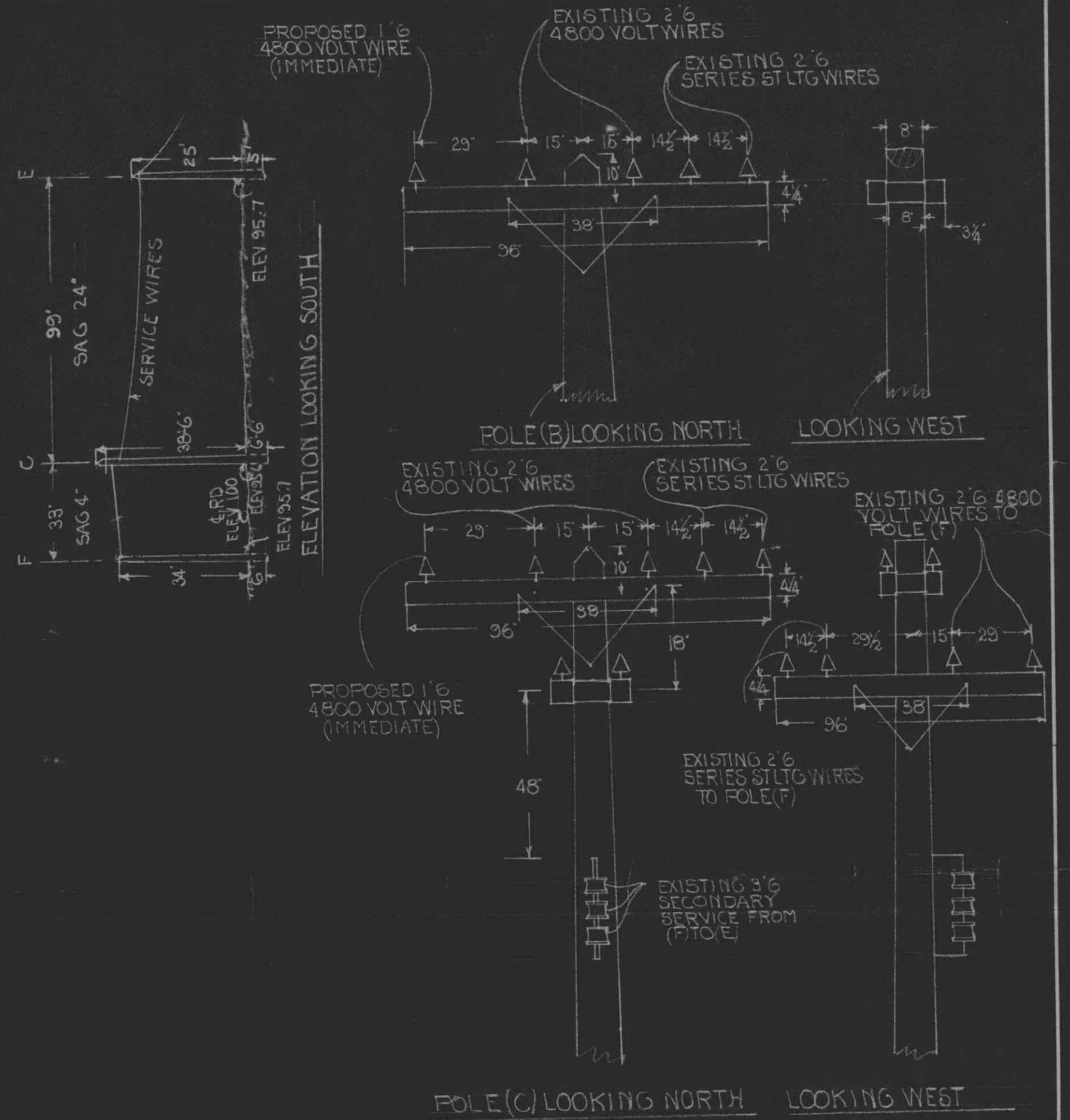
Checked by: *D. Burns*

RECORDED RIGHT OF WAY NO.

34636
p 195



PLAN OF CROSSING



ELEVATION OF CROSSING LOOKING WEST

PURPOSE OF LINE
 ADDING THIRD WIRE TO CONVERT
 EXISTING SINGLE PHASE TO THREE PHASE,
 AND REBUILDING OLD CROSSING

APPROVED
 FOR
 MICHIGAN PUBLIC UTILITIES
 COMMISSION
John H. ...
 CHIEF ENGINEER
 FILE D-5260 DATE DEC 27 1928

CITY ROYAL OAK
 COUNTY OAKLAND
 TOWNSHIP ROYAL OAK
 SURVEY NO. OF TWP. 1 NORTH
 RANGE NO. 11 EAST
 SECTION NO. 2 E 4 SEC 16

THE DETROIT EDISON CO.
 PLAN SUBMITTED TO MICH.
 PUBLIC UTILITIES COMMISSION
 FOR 4800 VOLT CROSSING
 OVER GTR
 DRAWN BY FEH DATE 12 17 28
 CHECKED BY ... DATE 12 20 28

RECORDED BY THE STATE OF MICHIGAN
34636
P195

DEC 20 1928

J-5-260

RECEIVED
MICHIGAN PUBLIC UTILITIES
COMMISSION
DEC 26 1929