

STATE OF MICHIGAN
Office of the Michigan Public Utilities Commission, } ss.

I, J. Carl Sheil, Secretary of the Michigan Public Utilities Commission,

Do Hereby Certify, That I have compared the annexed copy of Permit No. U-5278

with the original permit

recorded in

and that it is a true and correct transcript therefrom, and of the whole of such original.

In Testimony Whereof, I have hereunto set my hand and affixed

the seal of the Commission, at Lansing, this 1st

day of March in the year of our Lord

one thousand nine hundred twenty-nine

Secretary, Michigan Public Utilities Commission.

MEW

RECORDED RIGHT OF WAY NO.

34636

2/1/74

3184

3184

STATE OF MICHIGAN
BEFORE MICHIGAN PUBLIC UTILITIES COMMISSION

U-5278

Standard Railroad Wire-Crossing Permit No.....

In Re Application of **Detroit Edison Company (Detroit)**

Pursuant to Act No. 171 of the Session Laws of 1898, as amended, application having been made to Michigan Public Utilities Commission by said **Detroit Edison Company**

for permission to string wires across the tracks of the **Grand Trunk Railway System**

and said **Detroit Edison Company**

having conformed to the Commission's rules governing the filing of notices and issuing of permits for the construction of electrical lines and said rail company having waived the right of notice and hearing provided for in said act

THEREFORE, It is ordered that said **Detroit Edison Company**

be permitted to string the following described wires across the tracks of said railroad at the following described place:

In Port Huron Township,)
St. Clair County,)
Michigan:-)
3/4 mile West of 24th Street
and 800 ft. West of mile post
333, Sec. 17, with:

3 - #0 copper wires, 4800 volts,
three-phase.

as indicated on the attached plans, when, as and if approved.

At the point of crossing said wires shall be constructed in accordance with this Commission's rules and regulations.

Given under our hands and the Official Seal of this Commission at the City of Lansing, State of Michigan, this 1st day of March A. D. 19 29.

MICHIGAN PUBLIC UTILITIES COMMISSION
By

JAMES BICE

Chairman,

BYRON P. HICKS

Commissioner,

ROBERT H. DUNN

Commissioner,

SAMUEL ODELL

Commissioner,

SIDNEY E. DOYLE

Commissioner.

Countersigned

J. Carl Sheil

Secretary

RECORDED RIGHT OF WAY NO. 34636
p174

DATA SHEET TO ACCOMPANY
DRAWING RX-900

Name of Company

The Detroit Edison Company.

Name and Location of Crossing

Over the G.T.R. tracks, approx. $\frac{3}{4}$ mile West of 24th St., or 800' West of mile post #333, N.E. $\frac{1}{4}$ Sec. 17, Town 6 north, Range 17 East, Pt. Huron Twp., St. Clair County, Mich.

Circuits

Proposed one 4800 volt, 60 cycle, 3 wire, 3 phase distribution circuit.

Poles

Poles (A), (B), (C), (D), (E), (F), (G), (H) & (I) 50' Idaho Cedar, 28" top circumference, 47" butt circumference at ground line set 7' in clay soil.

Guy and Guy Attachments

One 5/16" Guy from pole (B) 41' above ground to pole (A) 10' above ground.

One 5/16" Guy from pole (I) 41' above ground to stub (J) 20' above ground.

All Guy wire double galvanized stranded steel with a minimum ultimate strength of 55,000 pounds per square inch.

Cross Arms

Proposed one $3\frac{1}{2}$ " x $4\frac{1}{4}$ " x 96" Douglas Fir double cross arm per crossing pole.

Conductors

Proposed 3 #0 Medium hard drawn stranded T.B.W.P. copper wires.

RECORDED RIGHT OF WAY NO. 34636 P174

DATA SHEET TO ACCOMPAN
RAILROAD CROSSING DRAWINGS

Guy Clamps

One 1 5/8" x 6" three bolts galvanized steel clamp at each end, for 3/8" and 5/16" guys.
Two 1/2" Crosby guy clamps at each end, for 1/2" guys.

Guy Insulators

Two O.B. #26500 - 3 1/2" porcelain interlocking strain type insulators on 3/8" and 5/16" guys for 24,000 volt circuits and one per guy for lower voltages.
Two O.B. #25009 - 4" porcelain interlocking strain type insulators on 1/2" guys for 24,000 volt circuits and one per guy for lower voltages.

Guy Anchors

Four Blade "Everstick" on 1/2" Guys buried 7' deep.
5" Cone ON 3/8" and 5/16" guys buried 6' deep.

Anchor Rods

3/4" x 18" round galvanized steel rods on "Everstick" anchors.
5/8" x 6" round galvanized steel rods on 5" Cone anchors.

Cross Arms Attachments

5/8" Galvanized steel center bolts.
5/8" Galvanized steel spacer bolts.
4" x 4" treated pine space blocks.
1/4" x 1 1/2" x 28" flat galvanized steel braces.
3/8" galvanized steel bolts at arm end of braces.
1/2" x 5" galvanized steel lag screws at pole end of braces.

Pins

1 1/2" x 1 1/4" x 1 3/8" locust pins for 24,000 volt circuits.
1 1/2" x 10-1/8" x 1" locust pins for all other circuits.

Insulators

One O.B. #11623 pin type and four Locke #8049 disc type insulators per wire, per crossing pole on 24,000 volt circuits.
(One O.B. #11623 and two Locke #8049 for dead ends).
Two O.B. #12847 porcelain pin type insulators per wire, per crossing pole for 4800 volt, 2400 volt, series, lighting, and private telephone circuits.
Two #20 Hemingray glass insulators per wire, per crossing pole for 120/240 volt secondary circuits.
One O.B. #12847 pin type and two Colonial #11940 disc type insulators per wire for #0000 primary circuits and one #20 Hemingray glass pin type and two #25009 strain type insulators per wire for #0000 secondary circuits per crossing pole.

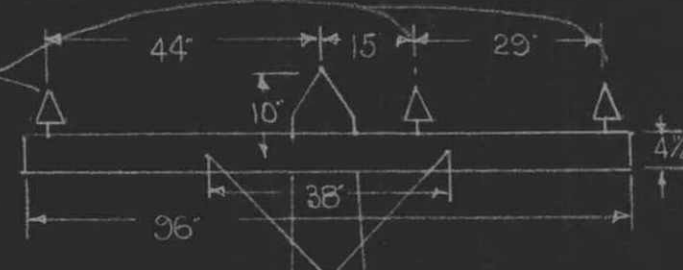
Ties

Standard top groove tie on 24,000 volt, 4,800 volt, 2,400 volt, series lighting and private telephone circuits.
Standard side groove tie on 120/240 volt secondary circuits.
#8 soft, solid, bare copper tie wire for 24,000 volt circuits.
#6 soft, solid, weatherproof copper tie wires on all other circuits.

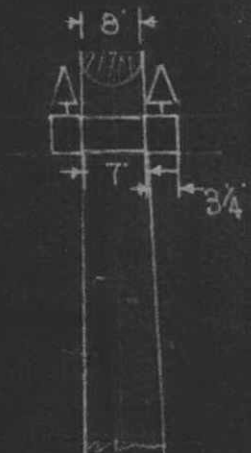
Checked by.. *D. Burns*

RECORDED RIGHT OF WAY NO

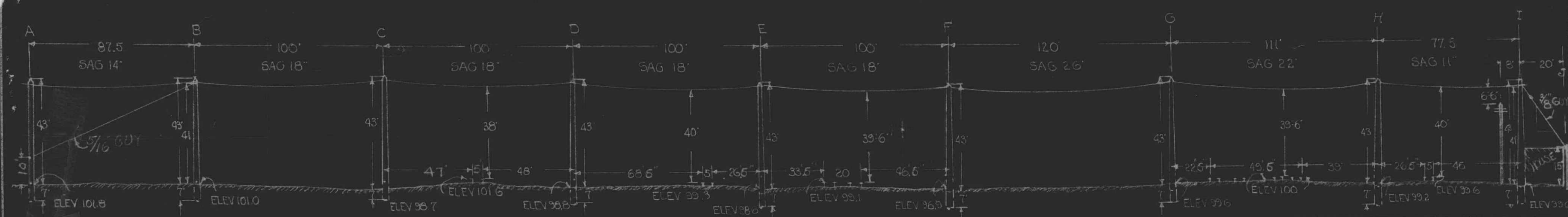
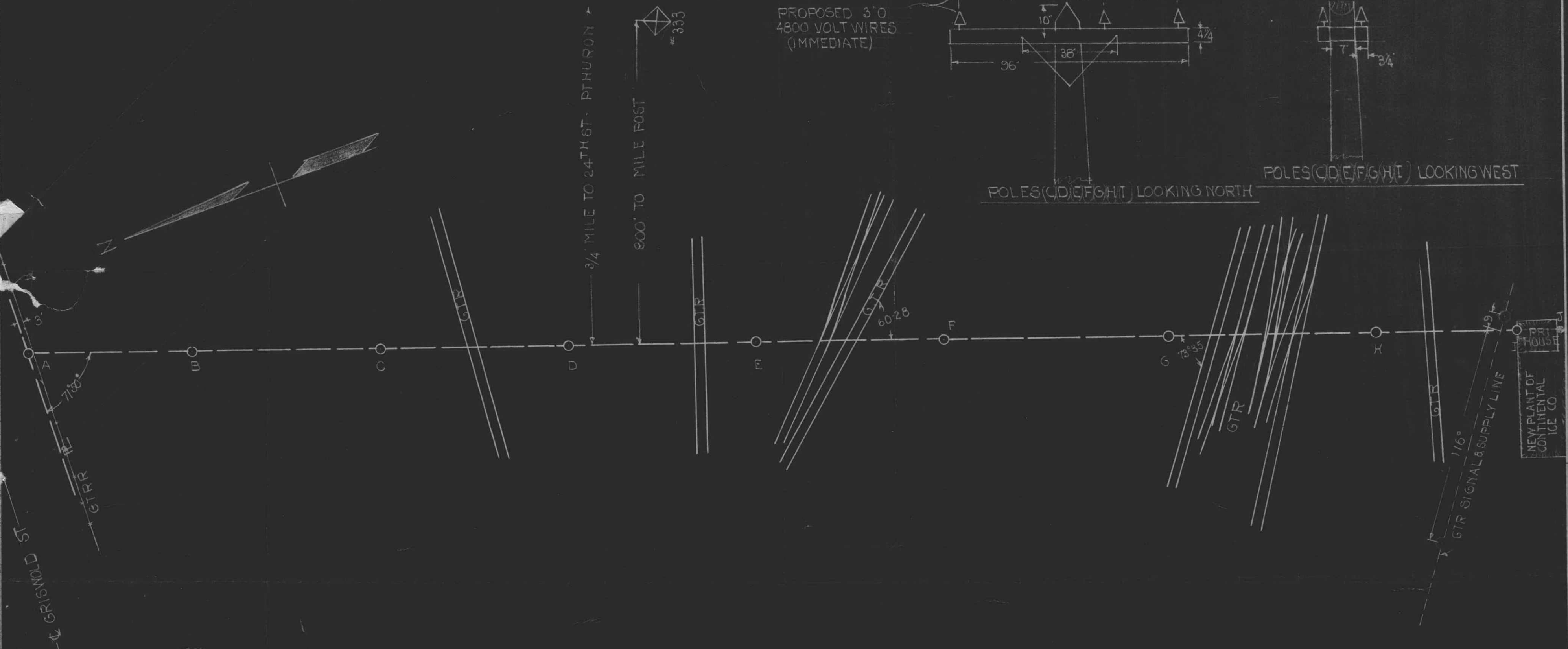
PROPOSED 3" O
4800 VOLT WIRES
(IMMEDIATE)



POLES (C/D/E/F/G/H/I) LOOKING WEST



POLES (C/D/E/F/G/H/I) LOOKING NORTH



ELEVATION OF CROSSING LOOKING EAST

PURPOSE OF LINE
PRIMARY SERVICE TO NEW
PLANT OF CONTINENTAL ICE CO

APPROVED
FOR
MICHIGAN PUBLIC UTILITIES
COMMISSION
J. H. [Signature]
CHIEF ENGINEER
FILE 0-5278 DATE DEC 28 1928

CITY _____
COUNTY ST CLAIR
TOWNSHIP PT. HURON
SURVEY NO. OF TWP. 6 NORTH
RANGE NO. 17 EAST
SECTION NO. NE 4 SEC 17

THE DETROIT EDISON CO.
PLAN SUBMITTED TO MICH.
PUBLIC UTILITIES COMMISSION
FOR 4800 VOLT CROSSING
OVER G.T.R.
DRAWN BY E.E.H. DATE 12-20-28
CHECKED BY [Signature] DATE 12-20-28

U-1778

RY-900

RECORDED RIGHT OF WAY NO. 34636
P174