

STATE OF MICHIGAN

Office of the Michigan Public Utilities Commission, } ss.

I, J. Carl Sheil, Secretary of the Michigan Public Utilities Commission,

Do Hereby Certify, That I have compared the annexed copy of Permit No. U-4367

with the original permit

~~recorded in~~

and that it is a true and correct transcript therefrom, and of the whole of such original.

In Testimony Whereof, I have hereunto set my hand and affixed

the seal of the Commission, at Lansing, this 29th

day of February in the year of our Lord

one thousand nine hundred twenty-eight

J. Carl Sheil

Secretary, Michigan Public Utilities Commission.

RECORDED RIGHT OF WAY NO. 34636-19151

2511

2511

STATE OF MICHIGAN
BEFORE MICHIGAN PUBLIC UTILITIES COMMISSION

Standard Railroad Wire-Crossing Permit No. U-4367

In Re Application of **Detroit Edison Company (Detroit)**

Pursuant to Act No. 171 of the Session Laws of 1893, as amended, application having been made to Michigan Public Utilities Commission by said **Detroit Edison Company**

for permission to string wires across the tracks of the **Grand Trunk Railway System**

and said **Detroit Edison Company**

having conformed to the Commission's rules governing the filing of notices and issuing of permits for the construction of electrical lines and said rail **way** company having waived the right of notice and hearing provided for in said act

THEREFORE, It is ordered that said **Detroit Edison Company**

be permitted to string the following described wires across the tracks of said railroad at the following described place:

In City of Pontiac, Oakland County, Michigan:-	}	In Baldwin Avenue, with: 3 - #6 copper wires, 4800 volts, three-phase.
--	---	--

as indicated on the attached plans, when, as and if approved.

At the point of crossing said wires shall be constructed in accordance with this Commission's rules and regulations.

Given under our hands and the Official Seal of this Commission at the City of Lansing, State of Michigan, this **29th** day of **February** A. D. 19**28**.

MICHIGAN PUBLIC UTILITIES COMMISSION
By

.....**SAMUEL ODELL**.....
Chairman,

.....**SIDNEY E. DOYLE**.....
Commissioner,

.....**JAMES BICE**.....
Commissioner,

.....**BYRON P. HICKS**.....
Commissioner,

.....**ROBERT H. DUHN**.....
Commissioner.

Countersigned

.....**J. Carl Shell**.....
Secretary

RECORDED RIGHT OF WAY NO. 34636 10/51

DATA SHEET TO ACCOMPANY
DRAWING #RX-720

Name of Company

The Detroit Edison Company.

Name and Location of Crossing

Over the G.T.R. spur track in Baldwin approximately 1350'
north of Section Line Rd. between sections 20-29, S.W.
 $\frac{1}{4}$ Section 20, Twp. 3 North, Range 10 East, City of Pontiac,
Pontiac Township, Oakland County, Michigan.

Circuits

Existing one 4,800 volt, 60 cycle, 3 wire, 3 phase, distribution
circuit.

Poles

Pole (A) 40' Idaho Cedar, 28" top circumference, 50" butt
circumference at ground line set 6' in clay soil.
Pole (B) 40' Idaho Cedar, 28" top circumference, 44" butt
circumference at ground line set 6' in clay soil.
Pole (C) 40' Idaho Cedar, 28" top circumference, 43" butt
circumference at ground line set 6' in clay soil.
Pole (D) 35' Michigan Cedar, 22" top circumference, 38"
butt circumference at ground line set 6' in clay soil.

Guys and Guy Attachments

One 5/16" Guy from pole (B) 32' above ground to anchor (E)
32' from butt of pole (B).
One 5/16" Guy from pole (B) 32' above ground to anchor (F)
10' from butt of pole (B).
One 5/16" Guy from pole (C) 32' above ground to pole (D) 8'
above ground.
One 5/16" Guy from pole (D) 27' above ground to pole (C) 8'
above ground.

All guy wire double galvanized stranded steel with a minimum
ultimate strength of 55,000 pounds per square inch.

Gross Arms

Existing one $3\frac{1}{4}$ " x $4\frac{1}{4}$ " x 96" Douglas fir double cross arm
per crossing pole.

Conductors

Existing 3 #6 Medium hard drawn, solid, T.B.W.P. copper wires.

RECORDED HIGH 02 MAY NO. 34636
4/15/51

DATA SHEET TO ACCOMPANY
RAILROAD CROSSING DRAWINGS

Guy Clamps

One 1 5/8" x 6" three bolts galvanized steel clamp at each end, for 3/8" and 5/16" guys.

Two 1/2" Crosby guy clamps at each end, for 1/2" guys.

Guy Insulators

Two O.B.#26500 - 3 1/2" porcelain interlocking strain type insulators on 3/8" and 5/16" guys for 24,000 volt circuits and one per guy for lower voltages.

Two O.B.#25009 - 4" porcelain interlocking strain type insulators on 1/2" guys for 24,000 volt circuits and one per guy for lower voltages.

Guy Anchors

Four Blade "Everstick" on 1/2" Guys buried 7' deep.

8" Cone and 3/8" and 5/16" guys buried 6' deep.

Anchor Rods

3/4" x 8' round galvanized steel rods on "Everstick" anchors.

5/8" x 6' round galvanized steel rods on 8" Cone anchors.

Cross Arms Attachments

5/8" Galvanized steel center bolts.

5/8" Galvanized steel spacer bolts.

4" x 4" treated pine space blocks.

1/4" x 1 1/2" x 28" flat galvanized steel braces.

3/8" galvanized steel bolts at arm end of braces.

1/2" x 5" galvanized steel lag screws at pole and of braces.

Pins

1 3/4" x 14" x 1 3/8" locust pins for 24,000 volt circuits.

1 1/2" x 10-1/8" x 1" locust pins for all other circuits.

Insulators

One O.B.#11623 pin type and four Locke #8049 disc type insulators per wire, per crossing pole on 24,000 volt circuits.

(One O.B.#11623 and two Locke #8049 for dead ends).

Two O.B.#12847 porcelain pin type insulators per wire, per crossing pole for 4,800 volt, 2,400 volt, series lighting, and private telephone circuits.

Two #20 Hemingray glass insulators per wire, per crossing pole for 120/240 volt secondary circuits.

One O.B.#12847 pin type and two Colonial #11940 disc type insulators per wire for #0000 primary circuits and one #20 Hemingray glass pin type and two #25009 strain type insulators per wire for #0000 secondary circuits per crossing pole.

Ties

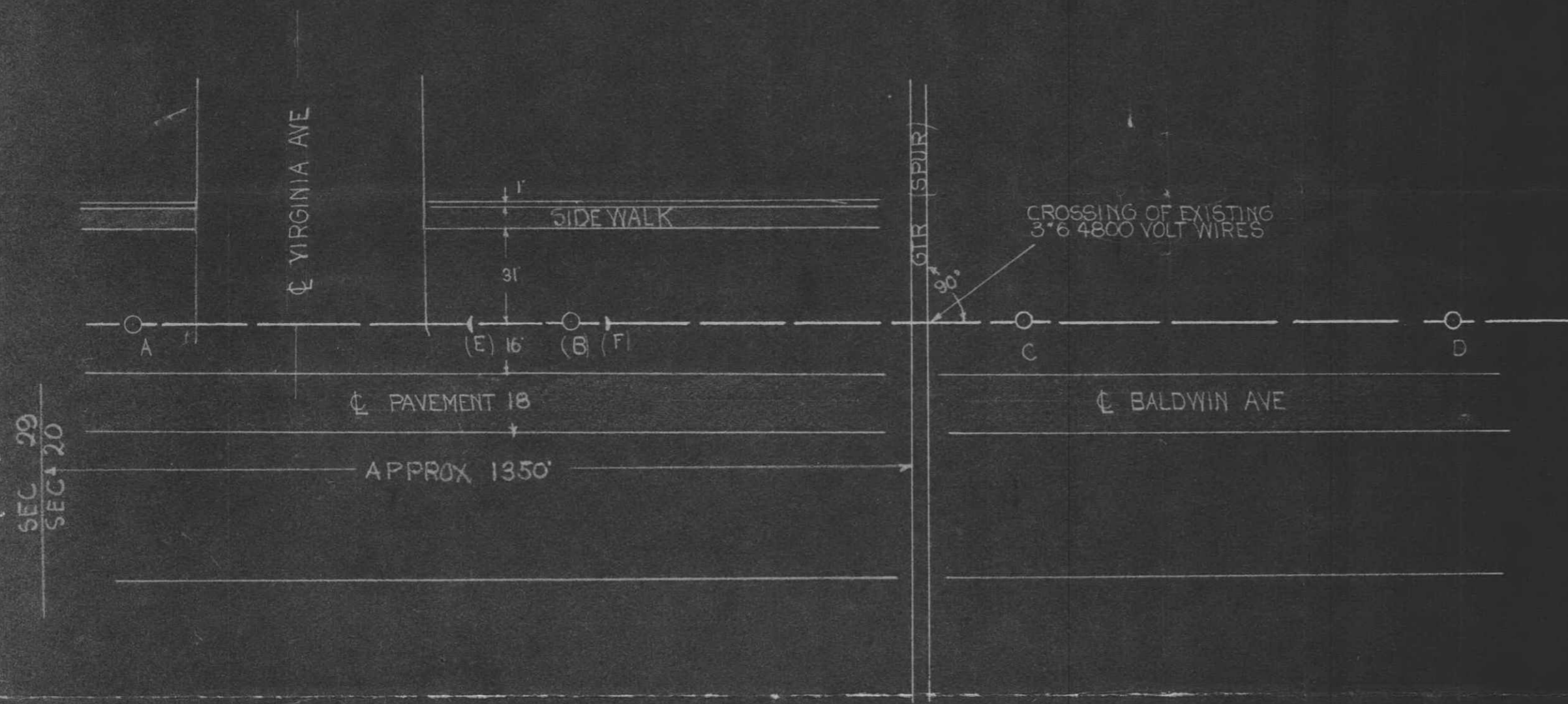
Standard top groove tie on 24,000 volt, 4,800 volt, 2,400 volt, series lighting and private telephone circuits.

Standard side groove tie on 120/240 volt secondary circuits.

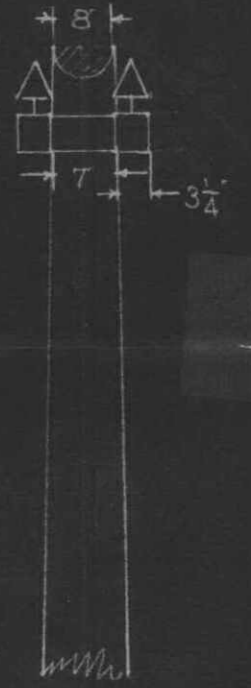
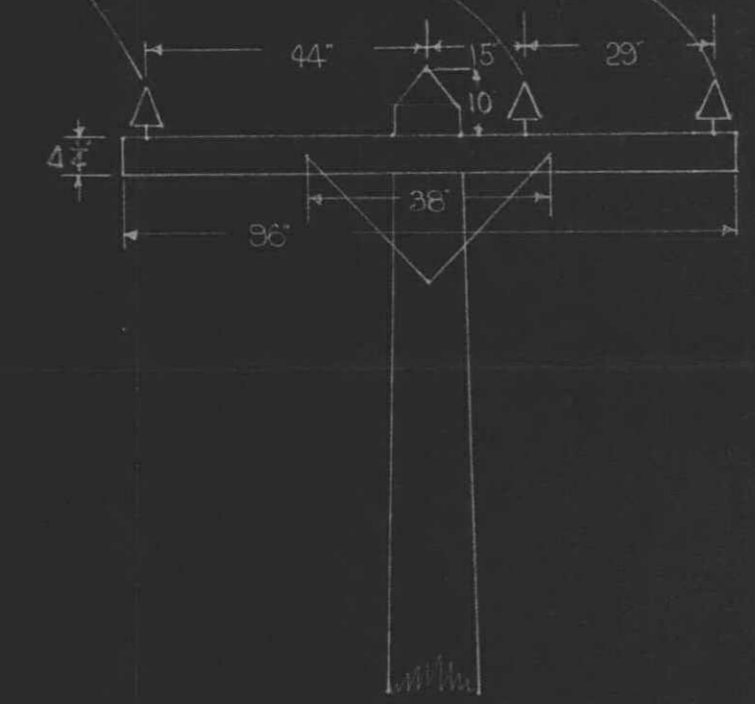
#8 soft, solid, bare, copper tie wire for 24,000 volt circuits.

#6 soft, solid, weatherproof, copper tie wire on all-other circuits.

Checked by D. BURNS



EXISTING 3"6
4800 VOLT WIRES



POLES (B) & (C) LOOKING SOUTH

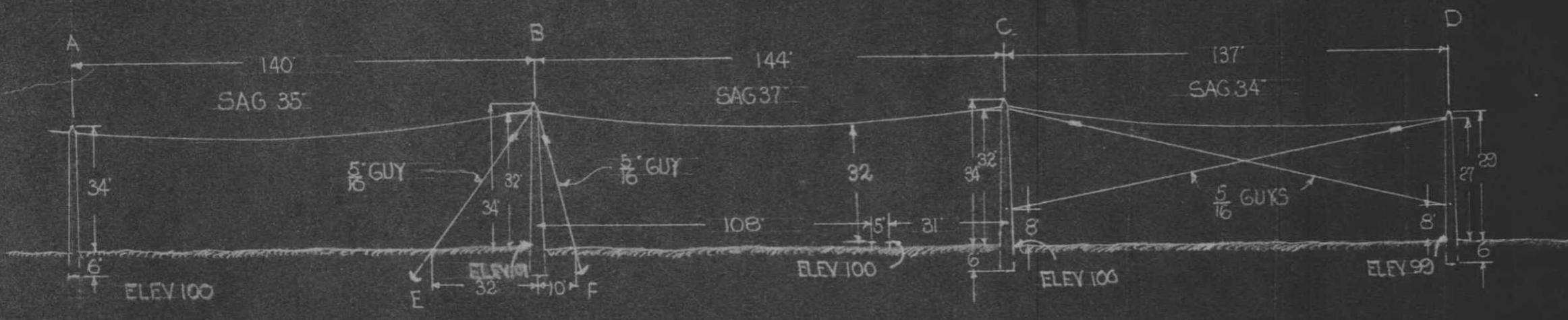
LOOKING EAST

PLAN OF CROSSING

TYPICAL POLE TOP CONSTRUCTION

RECORDED RIGHT OF WAY
E 346036
P 159

PURPOSE OF LINE
REBUILDING OF LINE DUE TO LAYING
OF NEW GTR SPUR TRACK



ELEVATION OF CROSSING LOOKING WEST

APPROVED
FOR
MICHIGAN PUBLIC UTILITIES
COMMISSION
J. H. [Signature]
CHIEF ENGINEER
FILE 6-4367 DATE FEB 29 1928

CITY PONTIAC
COUNTY OAKLAND
TOWNSHIP PONTIAC
SURVEY NO. OF TWP. 3 NORTH
RANGE NO. 10 EAST
SECTION NO. 5 W 4 SEC 20

THE DETROIT EDISON CO.
PLAN SUBMITTED TO MICH.
PUBLIC UTILITIES COMMISSION
FOR 4800 VOLT CROSSING
OVER GTR (SPUR)
DRAWN BY EFH DATE 2-20-28
CHECKED BY GSI DATE 2-23-28

(YELLOW KID)

V-4367

City of Portine

4/24/72
The City of Portine

RECEIVED
MICHIGAN STATE LAND
OFFICE
FEB 26 1972

RAILWAY CROSSING FILE NO. 2511

RAILWAY CROSSING FILE NO. 2511

34636 p 151

RECORDED RIGHT OF WAY NO.
34636
p 151