



STATE OF MICHIGAN }
Office of the Michigan Public Utilities Commission, } ss.

I, Peter Fagan, Secretary of the Michigan Public Utilities Commission

Do Hereby Certify, That I have compared the annexed copy of Permit No. U-8912

with the original permit

recorded in

and that it is a true and correct transcript therefrom, and of the whole of such original.

In Testimony Whereof, I have hereunto set my hand and affixed

the seal of the Commission, at Lansing, this 31st

day of May in the year of our Lord

one thousand nine hundred thirty-four

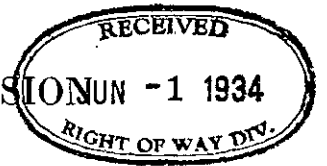
Secretary, Michigan Public Utilities Commission

3702

3702

RECORDED RIGHT OF WAY NO. 34636
P127

STATE OF MICHIGAN
BEFORE MICHIGAN PUBLIC UTILITIES COMMISSION



Standard Railroad Wire-Crossing Permit No. U-8912.....

In Re Application of Detroit Edison Company (Detroit)

Pursuant to Act No. 171 of the Session Laws of 1893, as amended, application having been made to Michigan Public Utilities Commission by said Detroit Edison Company

for permission to string wires across the tracks of the Grand Trunk Western Railroad Co.

and said Detroit Edison Company

having conformed to the Commission's rules governing the filing of notices and issuing of permits for the construction of electrical lines and said rail road company having waived the right of notice and hearing provided for in said act

THEREFORE, It is ordered that said Detroit Edison Company

be permitted to string the following described wires across the tracks of said railroad at the following described place:

In Mussey Township,)
St. Clair County,)
Michigan:-)

At a point about 300 ft. South of Peat Mill Road in NW 1/4 of Section 28, with:

2 - #4, aluminum steel-cored wires, 4800 volts, single-phase.

as indicated on the attached plans, when, as and if approved.

At the point of crossing said wires shall be constructed in accordance with this Commission's rules and regulations.

Given under our hands and the Official Seal of this Commission at the City of Lansing, State of Michigan, this 31st day of May A. D. 1934.

MICHIGAN PUBLIC UTILITIES COMMISSION
By

JAMES B. BALCH
Chairman,

ROBERT H. DUNN
Commissioner,

FRANK J. SAWYER
Commissioner,

NORMAN M. SNIDER
Commissioner,

HAROLD J. WAPLES
Commissioner.

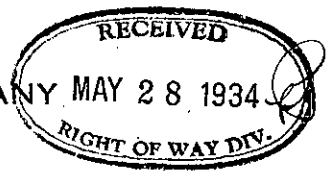
Countersigned

Peter Fagan
Secretary

RECORDED RIGHT OF WAY NO.

34636 P127

#15009



GRAND TRUNK WESTERN RAILROAD COMPANY
OFFICE OF SUPERINTENDENT

W.J. Hogan
Superintendent

(e) Battle Creek, Michigan May 25, 1934

Michigan Public Utilities Commission
Lansing, Michigan

Gentlemen:

Referring to application submitted to you under date of May 16 from the Detroit Edison Company, Detroit, for permission to string wires across our tracks at a point approximately 300 ft. south of Peat Mill Road, northwest quarter of Section 28, Mussey Township, St. Clair County, Michigan, with one 4800 volt, 60 cycle, 2 wire, single phase, distribution circuit, for the extension of rural distribution.

We have no objections to this crossing. The Detroit Edison Company has stated all construction will be done in strict accordance with the rules and regulations of the Commission, and you may use this letter as our waiver of hearing.

Yours truly,

W.J. Hogan
Superintendent.

CC: Mr. T. L. Hinks
Right of Way Agent, The Detroit Edison Co.
2000 Second Avenue
Detroit, Michigan

R-1421
U-8912
RECORDED RIGHT OF WAY NO. 34636
PIA 7

Guy Clamps

Serve 5/16" x 3/8", 1/2" and 6M guys at pole end.
One 3-bolt clamp at anchor end on 5/16" and 3/8" guys.
Two 7/16" U-bolt clamps at anchor end of 1/2" & both ends of 16M guys.
Two 3-bolt clamps at both ends of 5/16" copperweld guys.

Guy Insulators

O.B. #26500 (or equivalent) in 5/16", 3/8" and 6M guys.
O.B. #25009 (or equivalent) in 1/2", 10M, and 5/16" copperweld guys.
Two insulators per guy for 24,000 volt circuits, and one per guy for distribution circuits.

Guy Anchors

On 5/16", 3/8" and 6M guys - 8" cone anchor set 5-1/2' deep.
On 10M, 1/2" steel, and 5/16" copperweld guys - 8" expanding anchor set 7-1/2' deep.
On 16M guy, one concrete anchor (8 cu. ft. concrete) 6-1/2' deep.

Anchor Rods

On 5/16", 3/8" and 6M guys - 5/8" x 6' round galvanized steel.
On 1/2", 5/16" copperweld, 10M, 16M - 3/4" x 8' round galvanized steel.

Cross Arm Attachments

Center bolts and spacer bolts - 5/8" galvanized steel.
Spacer blocks - 4" x 4" treated pine.
Braces - 1" x 2-1/2" x 30" treated yellow pine for 24,000 volt circuits.
Braces - 1/4" x 1-1/4" x 28" galvanized steel for all other circuits.
Brace bolts - 3/8" galvanized steel bolts at arm and 1/2" x 5" lag screws at pole.

Pins

Locust 1-3/4" x 13-3/4" x 1-3/8" on arms and 3-3/4" x 3-3/4" x 17" pole top for 24,000 volt circuits.
Locust 1-1/2" x 9" x 1" on 3-1/4" x 4-1/4" arms, and 1-3/4" x 10" x 1" on 3-3/4" x 4-3/4" arms, for all other circuits.

Insulators

24 kv. circuits - one O.B. #11623 (or equivalent) porcelain pin type and six Thomas #1162 (or equivalent) disk type for dead-end construction, or two O.B. #11623 (or equivalent) for double pin construction.
4800 volt, series lighting, and private telephone circuits - two O.B. #12847 (or equivalent) pin type per wire.
120-240 volt circuits - two Hemingray #20 (or equivalent) glass pin type per wire.

Note

For strain type construction - on 4800 volt and series lighting circuits, two Lapp #6810 (or equivalent) strain insulators and one O.B. #12847 (or equivalent).
On 120-240 volt circuits - two O.B. #25009 (or equivalent) strain and one Hemingray #20 (or equivalent) glass pin type.

Ties

Standard top groove tie on 24,000 volt, 4800 volt series lighting and private telephone circuits.
Standard side groove tie on 120-240 volt circuits.
Tie wire - #8 soft bare copper on 24,000 volt, and bare telephone wires. #6 or #3 soft solid weatherproof copper for all conductors having weatherproof covering.
Aluminum armour rods and #10 galvanized iron tie wire for A.C.S.R. conductors.

DATA SHEET TO ACCOMPANY DRAWING RX 1421

V-8912

Name of Company

The Detroit Edison Company.

Name and Location of Crossing

Over the Grand Trunk R.R. in private roadway, approximately 300' south of Peat Mill Road, N.W. $\frac{1}{4}$ of Section 28, Township 7 north, Range 13 east, Mussey Township, St. Clair County, Michigan.

Circuits

Proposed one 4800 volt, 60 cycle, 2 wire, single phase, distribution circuit.

Poles

- Poles(B)(C) 40' Southern pine, 23" top circumference, 37" butt circumference at ground line set 6' in clay soil.
- Pole(A) 40' Western cedar, 21" top circumference, 36" butt circumference at ground line set 6' in clay soil.
- Pole(D) 35' Southern pine, 17" top circumference, 27 $\frac{1}{2}$ " butt circumference at ground line set 6' in clay soil.
- Pole(E) 30' Northern cedar, 21" top circumference, 38 $\frac{1}{2}$ " butt circumference at ground line set 5' in clay soil.

Guys and Guy Attachments

One 6M Guy from Pole(B) 33' above ground to Anchor(F) 15' from butt of Pole(B).

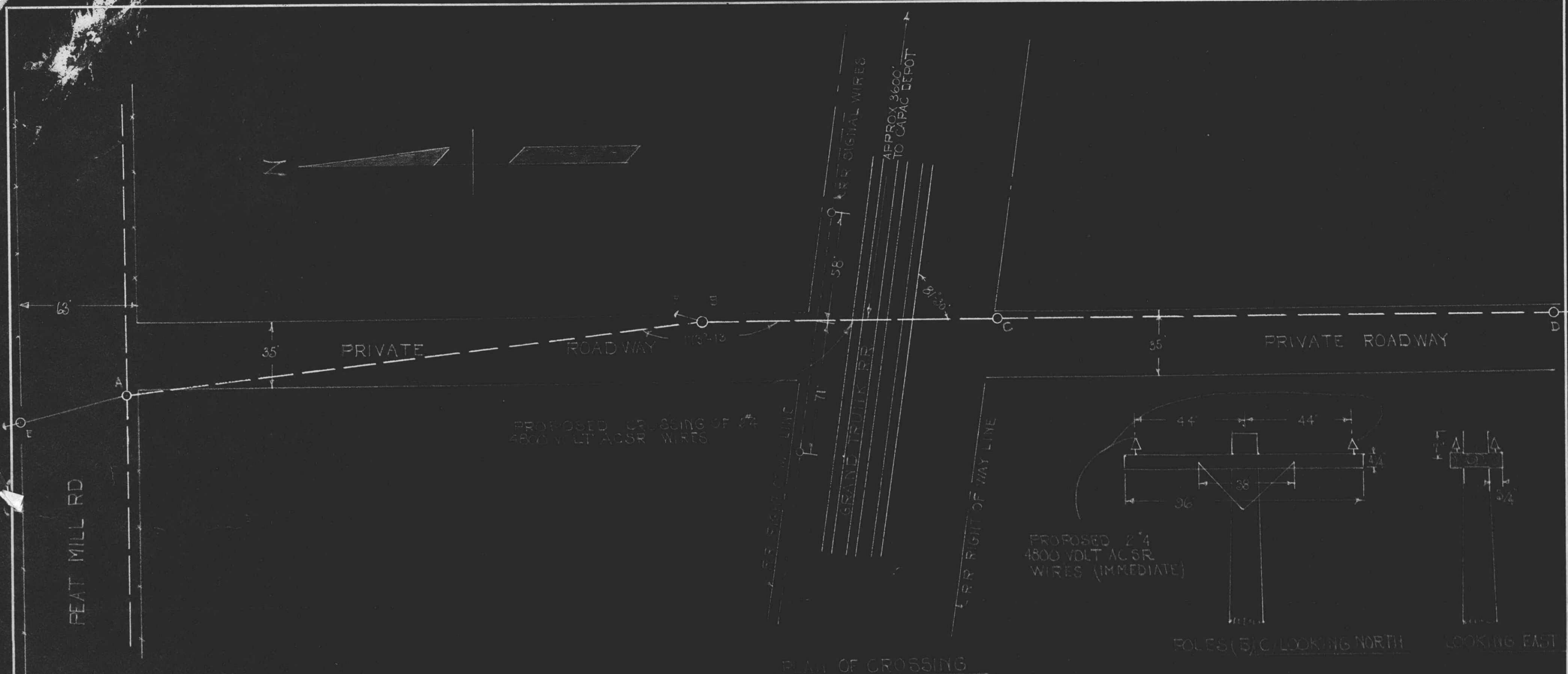
All guy wire double galvanized stranded steel.

Cross Arms

Proposed one 3 $\frac{1}{4}$ " x 4 $\frac{1}{4}$ " x 96" Douglas fir, double cross arm per crossing pole.

Conductors

Proposed 2 #4 A.C.S.R. wires.



APPROVED *ME*
FOR
MICHIGAN PUBLIC UTILITIES
COMMISSION
J. A. Stimpert
U-8912 CHIEF ENGINEER
DATE MAY 18 1934

ELEVATION OF CROSSING LOOKING EAST

CITY _____
COUNTY ST. CLAIR
TOWNSHIP MUSSEY
SURVEY NO. OF TWP. 7 NORTH
RANGE NO. 13 EAST
SECTION NO. NW 1/4 SEC. 28

THE DETROIT EDISON CO.
PLAN SUBMITTED TO MICH.
PUBLIC UTILITIES COMMISSION
FOR 4800 VOLT CROSSING
OVER GRAND TRUNK RR
DRAWN BY EEH DATE 5-14-34
CHECKED BY [Signature] DATE 5-14-34

HAL BACH; ROCHESTER

DRAFTING & SURVEYING BUREAU RX # 1421

RECEIVED
MICHIGAN PUBLIC UTILITIES
COMMISSION
MAY 18 1934
ANSD

RECORDED RIGHT OF WAY NO. 34636
P127

34636 P127

MAY 14 1934

RECEIVED
JUN - 1 1934
RIGHT OF WAY DIV.