

RECEIVED
MICHIGAN PUBLIC SERVICE
COMMISSION
SEP 30 1955
SECRETARY'S OFFICE

THE DETROIT EDISON COMPANY

2000 SECOND AVENUE
DETROIT 26, MICHIGAN

September 29, 1955

PUBLIC UTILITIES
To: Gas _____
Elec. _____ Adm. _____
SEP 30 1955
R and S _____
Baby makes _____

Michigan Public Service Commission
Lansing 13, Michigan

Gentlemen:

The Detroit Edison Company, Detroit, Michigan, hereby makes application for authority to string the following wires over the tracks of the Grand Trunk Western R.R. in the City of Mt. Clemens, Clinton Twp., Macomb County, T-2E, R-13E.

(Span C-D) Three #2 wpx 4000 volt wires over the track of the G.T.W.R.R. located in South Rose Street approximately 640' south of Church St.

Note: Permit requested for record purposes only, no change in crossing.

The proposed wire crossing will be constructed in accordance with specifications of the Michigan Public Service Commission and the construction standards of The Detroit Edison Company, approved by the Michigan Public Service Commission on July 19, 1939, File ED 2-9.01.

- Enclosed is a waiver of hearing granted by the Railroad Company.
- Waiver of hearing by the Railroad Company is covered by blanket waiver.
- This application covers reconstruction of existing crossing and will cancel and supersede wire crossing permit No. **ED-2-8-2908** dated **11-8-51**.
- This is a new crossing.

Reference number of construction drawing is **RX-1495B**.

Permit No. **ED2-8-3774**

Date **October 3, 1955**

By *J. M. Hoopie*
Acting Director of Public Utilities.

REAL ESTATE AND RIGHTS-OF-WAY DEPT.

1955 OCT 4 AM 9

Yours very truly,
L. G. Hedden

L. G. Hedden
Supervisor of Rights of Way

RECORDED RIGHT OF WAY NO.

34636
paid

✓ Check in square indicates statement applicable.

GRAND TRUNK WESTERN RAILROAD COMPANY

T. D. ASH
SUPERINTENDENT
W. A. EDDY
SUPERINTENDENT TERMINALS

7350 ORLEANS STREET,
DETROIT, 11 MICH.

1955 SEP 28 AM 10 02
REAL ESTATE AND
RIGHTS-OF-WAY DEPT.

Milwaukee Junction,
September 27, 1955,
File 4730-Mt. Clemens MI.

The Detroit Edison Company,
2000 Second Avenue,
Detroit 26, Michigan.

Attn: L. G. Hodson, Supervisor
Rights of Way Procurement

Dear Sir:

Refer to your letter of August 24 requesting permission to increase the voltage from 24,000 to 40,000 volts on an existing line over our tracks located in South Ross Street at a point approximately 640 feet south of Church Street in the City of Mt. Clemens, Clinton Township, Macomb County, Michigan; the original line being authorized through Michigan Public Service Commission Permit MS-8-2788 dated November 8, 1951.

We have no objection to your proposal providing it will be done on a deferred coordination basis and if you agree to this you may accept this letter as our Waiver of Hearing.

Very truly yours,

T. D. Ash
Superintendent

W/s
cc: Mr. A. E. Laird - Detroit

RECORDED RIGHT OF WAY NO.

34636
P/24

THE DETROIT EDISON COMPANY

RX 14972

PROPOSED LINE CROSSING OVER 7 GRAND TRUNK WESTERN R.E. E (ING PERMIT NUMBER ED-2-8-2321)
 IN SOUTH ROSE APPROX 690' S. OF CHURCH ST CITY OF MT CLEMENS
 SECTION CLINTON TOWNSHIP CLINTON T EN R 32E COUNTY MACOMB

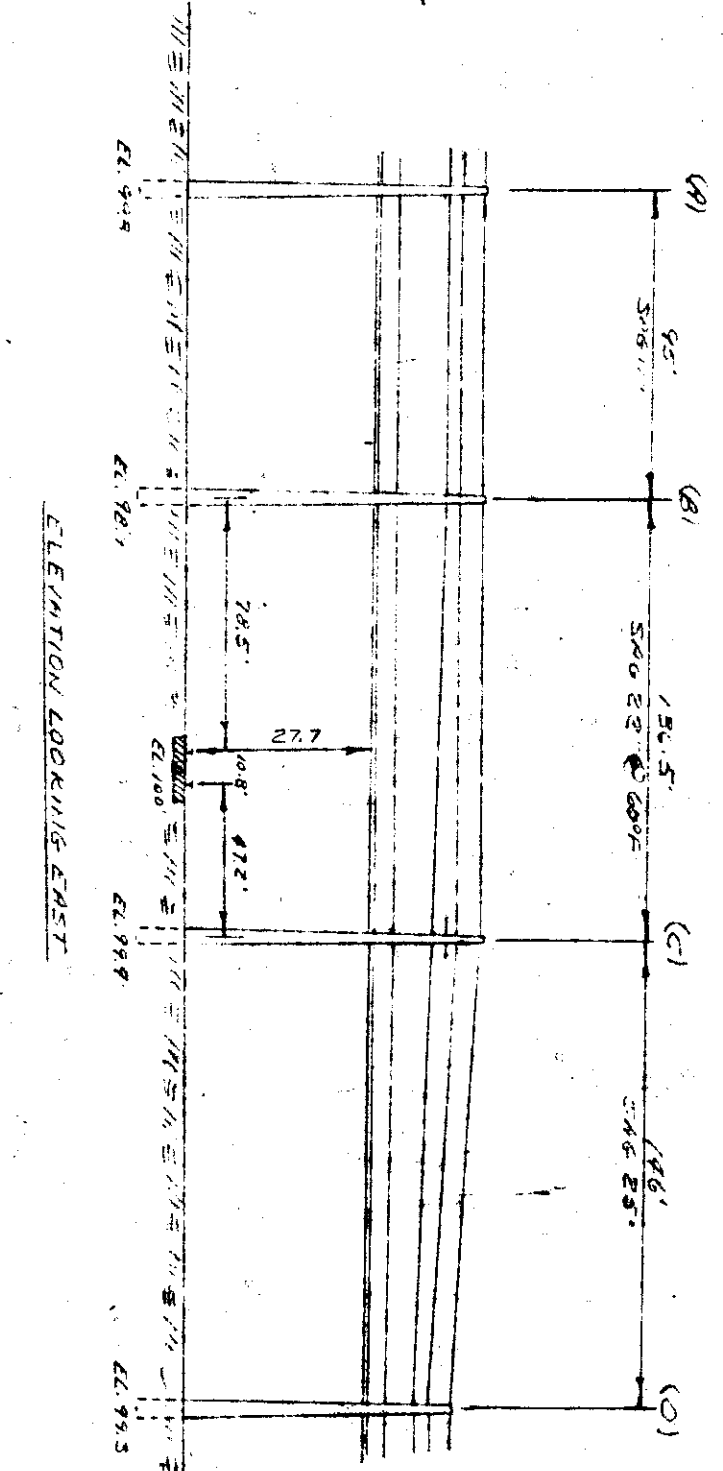
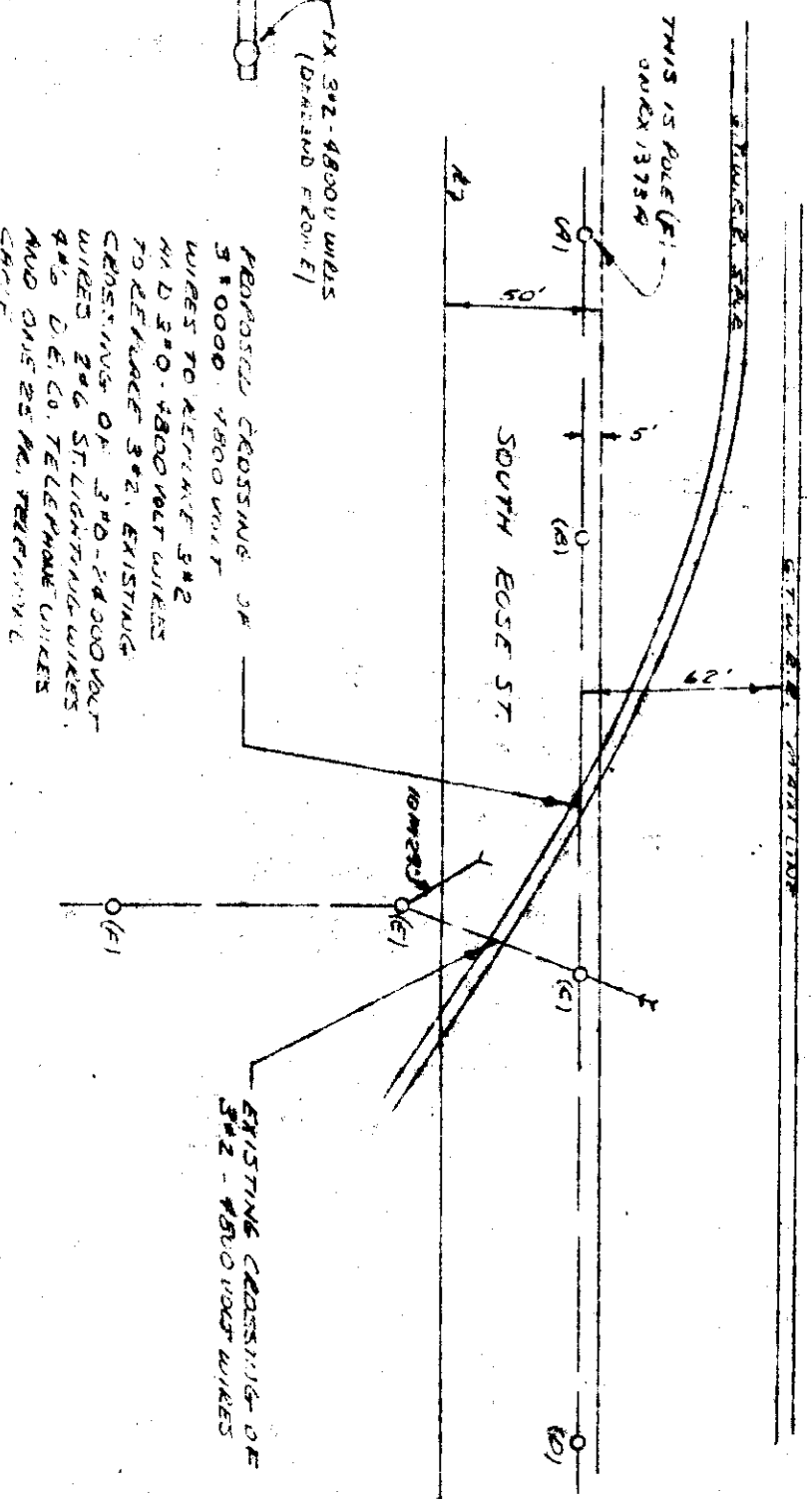
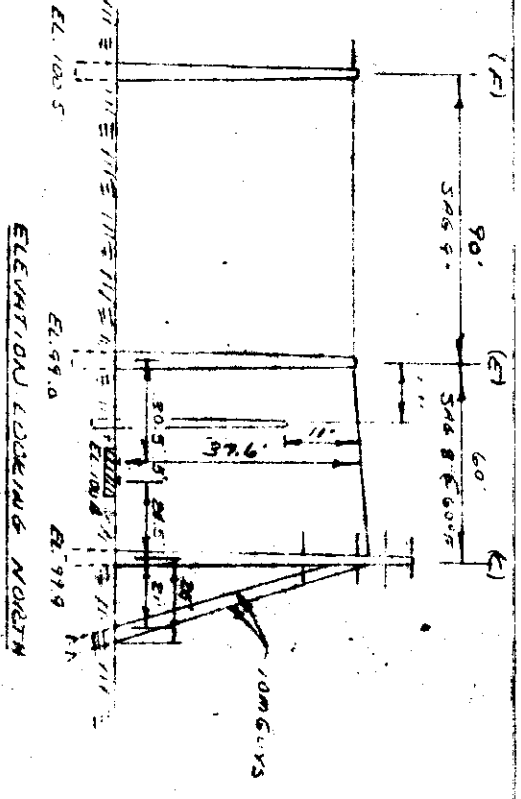
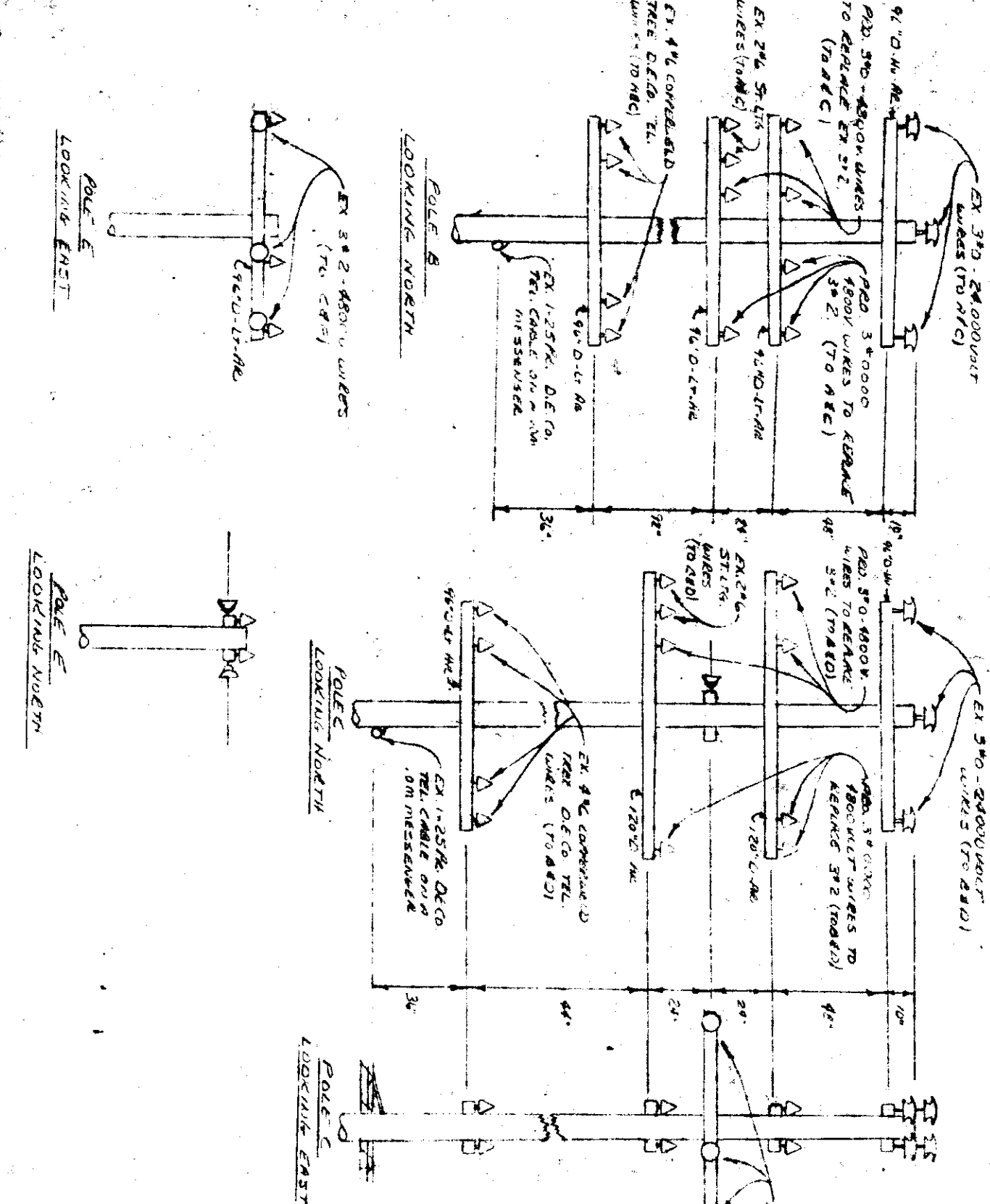
NOTES
 MATERIALS SHALL BE AS NOTED IN THE DETROIT EDISON COMPANY'S STANDARD SPECIFICATIONS FOR OVERHEAD LINE CONSTRUCTION AT RAILROAD CROSSINGS DATED MARCH 1947.
 ACTUAL FIELD DIMENSIONS MAY VARY SOMEWHAT FROM THOSE SHOWN BUT THE REQUIREMENTS OF ORDER NO. 1979 OF MICHIGAN PUBLIC SERVICE COMMISSION, AS REVISED JAN. 1, 1944, WILL BE COMPLIED WITH.

MINIMUM CLEARANCES

NEAREST POLE TO RAIL	7 FT.
MAIN LINE	12 FT.
STAGING	12 FT.
WIRE OVER TRACKS	27 FT. 800 - 7500 VOLTS 24000 VOLTS
WIRE OVER R. R. SIGNAL	2 FT. 800 - 7500 VOLTS 24000 VOLTS

NUMBER	SIZE	KIND	VOLTAGE	LOCATION	LENGTH	CLASS	TYPE	POLES	
								CLASS	TYPE
1	3/8"	A-D	24,000	A	55'	2	6-17-D.M.C.		
2	1/2"	A-C	8,000	B-C	55'	1			
3	3/8"	A-D	24,000	D	50'	3			
4	1/2"	A-C	8,000	E	45'	2			
5	3/8"	A-D	24,000	F	45'	4			
6	1/2"	A-C	8,000	G	45'	4			

DRAWN BY C.O.M. ENGINEERING DIVISION DATE 10-11-51
 ESTIMATOR L. HODGEN OVERHEAD LINES DEPT. D.T. CLEMENS



RECEIVED
MICHIGAN PUBLIC SERVICE
COMMISSION
SEP 30 1955
SECRETARY'S OFFICE

THE DETROIT EDISON COMPANY

2000 SECOND AVENUE
DETROIT 26, MICHIGAN

September 29, 1955

PUBLIC UTILITIES
To: _____ Gas _____
Elec _____ Adm. _____
SEP 30 1955
Rec'd S- _____
File _____

Michigan Public Service Commission
Lansing 13, Michigan

Gentlemen:

The Detroit Edison Company, Detroit, Michigan, hereby makes application for authority to string the following wires over the tracks of the Grand Trunk Western R.R. in the City of Mt. Clemens, Clinton Twp., Macomb County, T-2N, R-13E.

(Span B-C) Three #0 bare copper 40,000 volt wires, three #0000 wpx 4800 volt wires, two #6 street lighting wires, four #6 copperweld system communication wires, and one 25 pair D.E. Co. telephone cable on a 10M messenger over the track of the G.T.W.R.R. located in South Rose Street at a point approximately 640' south of Church St.

Note: The only change involved is the increase in voltage from 24,000 volts to 40,000 volts of the three #0 bare copper wires.

The proposed wire crossing will be constructed in accordance with specifications of the Michigan Public Service Commission and the construction standards of The Detroit Edison Company, approved by the Michigan Public Service Commission on July 19, 1939, File ED 2-9.01.

- Enclosed is a waiver of hearing granted by the Railroad Company.
- Waiver of hearing by the Railroad Company is covered by blanket waiver.
- This application covers reconstruction of existing crossing and will cancel and supersede wire crossing permit No. ED-2-8-2908 dated 11-8-51.
- This is a new crossing.

Reference number of construction drawing is RX-1495B.

G. T. W. RR waiver of hearing
File 4730-Mt. Clemens 21
dated 9-27-55, attached.

Permit No. ED2-8-3771
Date October 3, 1955

By [Signature]
Acting Director of Public Utilities.

Yours very truly,
[Signature]
~~R. G. Hedden~~
L. G. Hedden
Supervisor of Rights of Way

1955 OCT 4 AM 9
REAL ESTATE AND
RIGHTS-OF-WAY DEPT.

RECORDED RIGHT OF WAY NO.

94636
1124

✓ Check in square indicates statement applicable.