

THE DETROIT EDISON COMPANY

2000 SECOND AVENUE
DETROIT 26, MICHIGAN

MICHIGAN PUBLIC SERVICE
COMMISSION
AUG - 2 1957

August 1, 1957

AUG 2 1957

Permit No. ED 2-8-4150

Michigan Public Service Commission
Lansing 13, Michigan

Gentlemen:

I, Ivan W. Gamble, Supervisor of Rights of Way
of The Detroit Edison Company, Detroit, Michigan, hereby certify that the
wire crossing, covered by Wire Crossing Permit No. ED 2-8-4150,
issued 1-22-57, has been constructed in accordance with
specifications of the Michigan Public Service Commission and construction
standards of The Detroit Edison Company, approved by Michigan Public
Service Commission on July 19, 1939, file ED 2-9.01, and that this crossing
will be maintained as provided in such specifications and construction
standards.

Yours very truly,

Ivan W. Gamble

Ivan W. Gamble
Supervisor of Rights of Way

1957 AUG 7 AM 10 51
REAL ESTATE AND
RIGHTS-OF-WAY DEPT.

RECORDED RIGHT OF WAY NO.

RX No. 3290
Location City of Mt. Clemens
Macomb County
Railroad Grand Trunk Western
Railroad

Subscribed and sworn to before me this
1st day of August, 1957
Benjamin M. Rayburn
Notary Public Wayne
County, Michigan
My Commission expires August 24, 1959

34636
P102

Span B-E - P.P. 545' W of Gratiot Ave & 190' N of Canfield Ave

RECEIVED
MICHIGAN PUBLIC SERVICE
COMMISSION
JAN 21 1957
DEPARTMENT ACCOUNTING

THE DETROIT EDISON COMPANY

2000 SECOND AVENUE
DETROIT 26, MICHIGAN

January 18, 1957

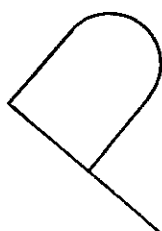
JAN 21 1957
Hand S: _____

Michigan Public Service Commission
Lansing 13, Michigan

Gentlemen:

The Detroit Edison Company, Detroit, Michigan, hereby makes application for authority to string the following wires over the tracks of the **Grand Trunk Western Railroad in the City of Mt. Clemens, P.C. 141, Clinton Twp., T-2N, R-13E, Macomb Co.**

(Span C-F) One 3/8" shield wire guy wire, one 3/16" guy wire, and one 1/4" guy wire over the tracks of the GTWR located in private property at a point 465 ft. west of Gratiot Ave. and 190 ft. north of Canfield Avenue.



The proposed wire crossing will be constructed in accordance with specifications of the Michigan Public Service Commission and the construction standards of The Detroit Edison Company, approved by the Michigan Public Service Commission on July 19, 1939, File ED 2-9.01.

- Enclosed is a waiver of hearing granted by the Railroad Company.
- Waiver of hearing by the Railroad Company is covered by blanket waiver.
- This application covers reconstruction of existing crossing and will cancel and supersede wire crossing permit No. _____ dated _____
- This is a new crossing.

Reference number of construction drawing is RX- 3290

G. T. W. waiver of hearing
File: 4730-4-125
dated 1-17-57, attached

Permit No. ED2-8-4149

Date 1-22-57

By F. M. Hoppe

Yours very truly,

I. W. Gamble

I. W. Gamble
Supervisor of Rights of Way

Check in circle indicates statement applicable.

RECORDED INDEXED OF THE MICHIGAN PUBLIC SERVICE COMMISSION

34636
P/03

GRAND TRUNK WESTERN RAILROAD COMPANY

T. D. ASH
SUPERINTENDENT
W. A. EDDY
SUPERINTENDENT TERMINALS

7350 ORLEANS STREET,

DETROIT, MI, MICH.
January 17, 1957
File: 4739-4-125

The Detroit Edison Company
2000 Second Avenue
Detroit 26, Michigan

Dear Sir:

Attn: I. W. Gamble

Kindly refer to your letter of January 4th, Plan RI-3290, and your asking for a waiver of hearing in connection with your desire to make the following crossings over our tracks in the City of Mount Clemens, P.C. 141, Clinton Township, Macomb County, Michigan:

Span B-E - To string one 3/8 inch shield wire guy, one 3/16 inch guy wire and one 5/16 inch guy wire in private property at a point 545 feet west of Gratiot Avenue and 190 feet north of Canfield Avenue.

Span C-F - To string one 3/8 inch shield wire guy, one 3/16 inch guy wire and one 1/4 inch guy wire in private property at a point 465 feet west of Gratiot Avenue and 190 feet north of Canfield Avenue.

Inasmuch as you have stated that all work will be done in accordance with the rules and regulations of the Michigan Public Service and as we have no objection to the work as proposed, I hereby grant you a waiver of hearing. A license will not be required for these crossings.

Yours very truly,

GRAND TRUNK WESTERN RAILROAD CO.



T. D. Ash
Superintendent

A/st
(3)

RECORDED RIGHT OF WAY NO.

34636

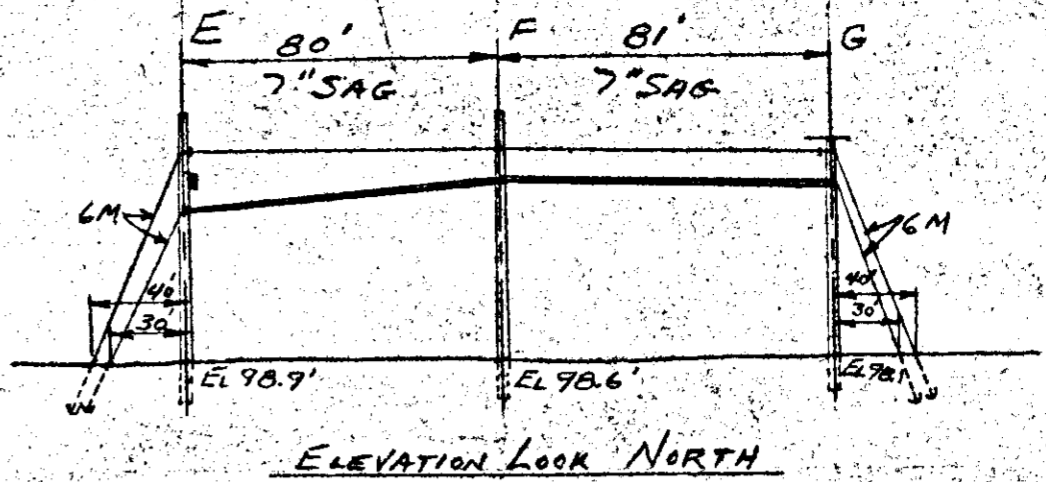
P102

THE DETROIT EDISON COMPANY

RX 3290

PROPOSED LINE CROSSING OVER GTW RR NEW CROSSING
 IN PRIVATE PROPERTY 465' S 545' W OF GRATIOT AVE. #190 CITY OF MT. CLEMENT
 SECTION P.C. 141 TOWNSHIP CLENTON COUNTY MACOMB

NOTES		CONDUCTORS		POLES					
MATERIALS SHALL BE AS NOTED IN THE DETROIT EDISON COMPANY'S STANDARD SPECIFICATIONS FOR OVERHEAD LINE CONSTRUCTION AT RAILROAD CROSSINGS DATED MARCH 1947.		NUMBER	SIZE	KIND	VOLTAGE	LOCATION	LENGTH	CLASS	TYPE
ACTUAL FIELD DIMENSIONS MAY VARY SOMEWHAT FROM THOSE SHOWN BUT THE REQUIREMENTS OF ORDER NO. 1575 OF MICHIGAN PUBLIC SERVICE COMMISSION, AS REVISED JAN. 1, 1944, WILL BE COMPLIED WITH.		1	3/8"	STEEL GUY	A-B-C-D	65		1	PINE
MINIMUM CLEARANCES		1	3/8"	STEEL GUY	E-F	45		3	"
NEAREST POLE TO RAIL		1	3/8"	STEEL GUY	G-H	40		4	CEDAR
SIDING		SPAN C-E							
MAIN LINE		1	3/8"	STEEL GUY					
WIRES OVER TRACKS		1	3/8"	STEEL GUY					
0 - 800 VOLTS		1	3/8"	STEEL GUY					
800 - 7500 VOLTS		1	3/8"	STEEL GUY					
24000 VOLTS		1	3/8"	STEEL GUY					
WIRES OVER R. R. SIGNAL		DRAWN BY <u>L. BOND</u> ENGINEERING DIVISION DATE <u>12-29-56</u>							
0 - 800 VOLTS		ESTIMATOR <u>R. HOLDEN</u> OVERHEAD LINES DEPT. <u>MT. CLEMENT</u>							
800 - 7500 VOLTS									
24000 VOLTS									

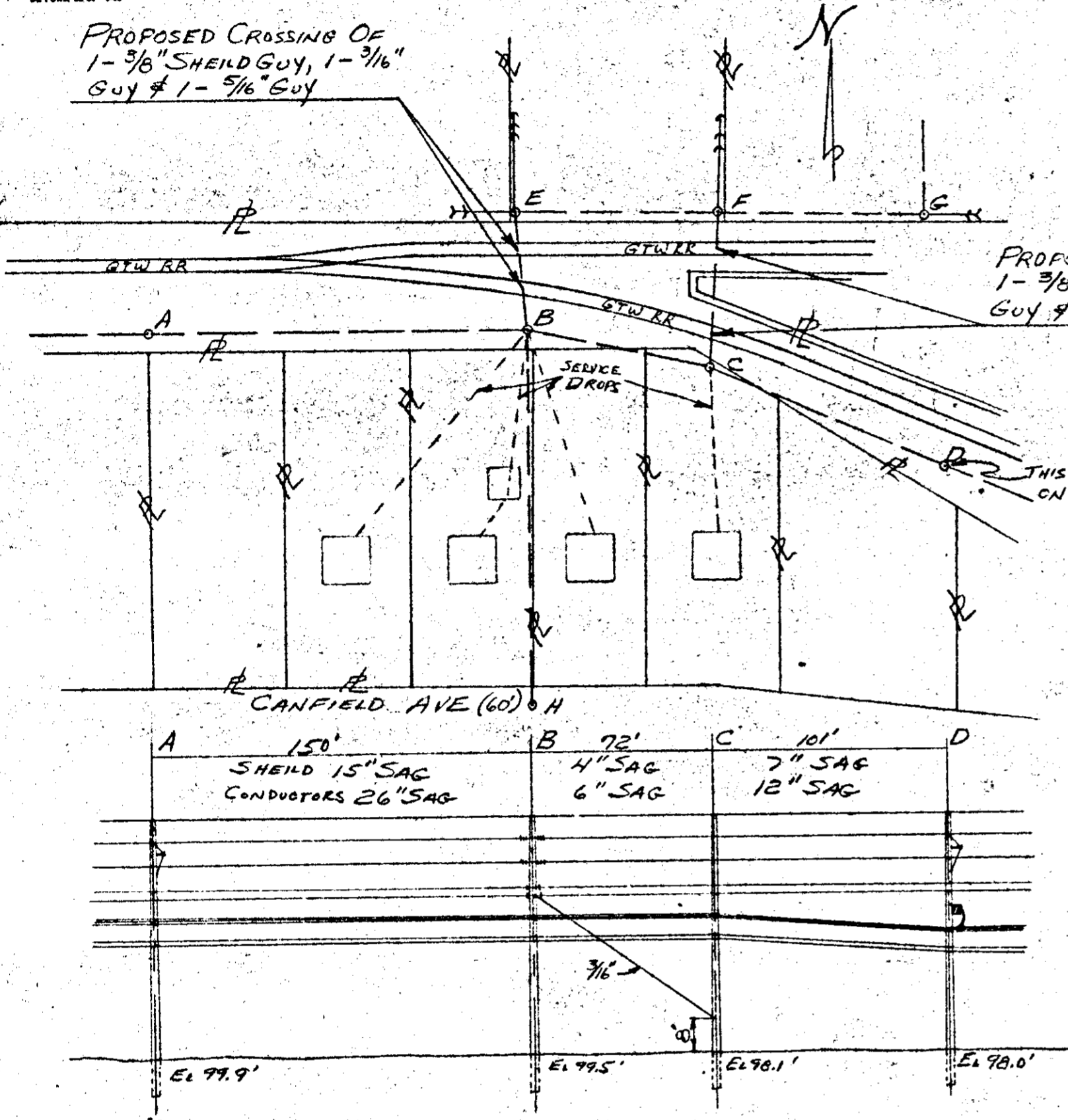


ELEVATION LOOK NORTH

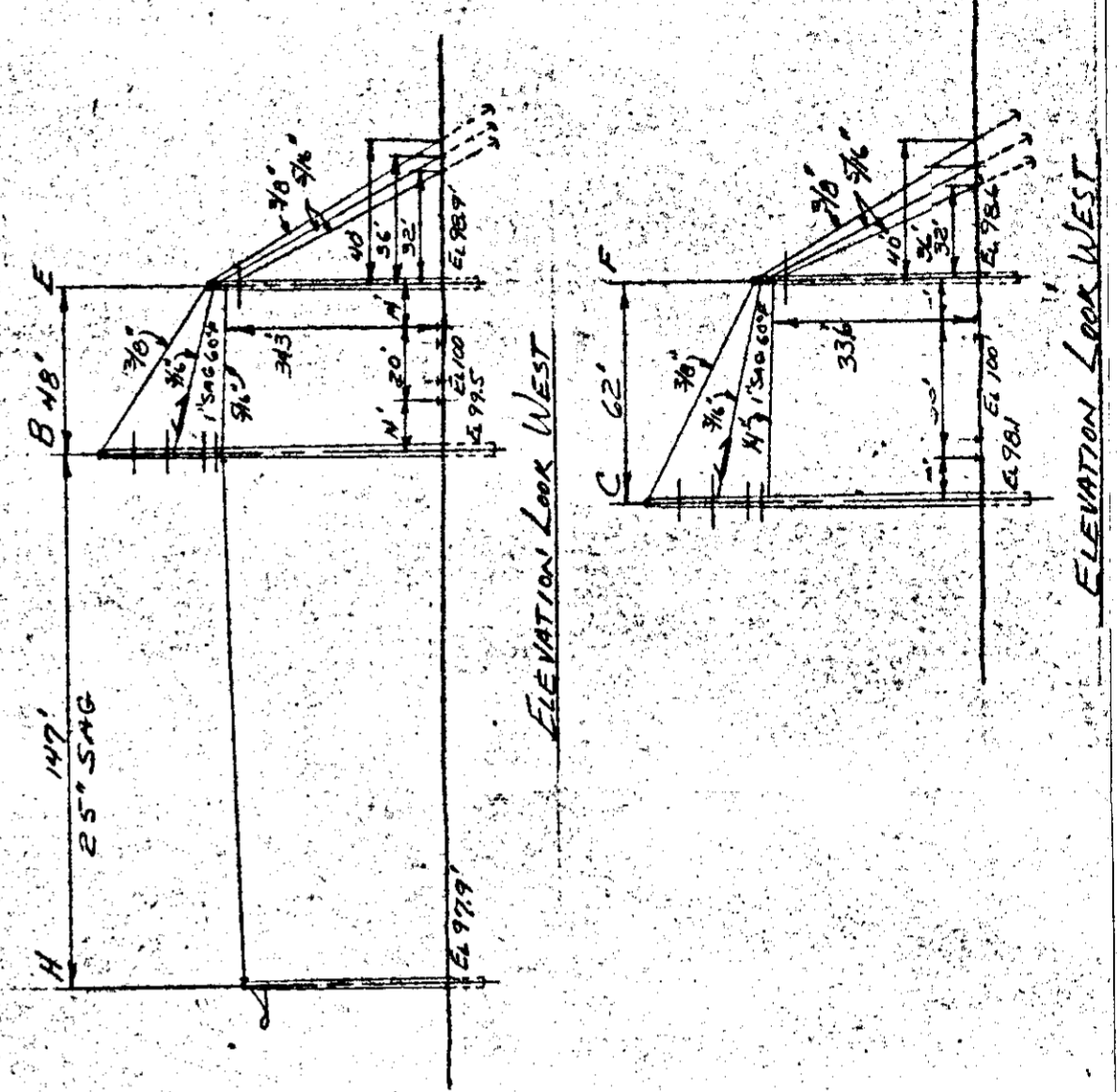
PROPOSED CROSSING OF
 1-3/8" SHEILD GUY, 1-3/16"
 GUY & 1-5/16" GUY

PROPOSED CROSSING OF
 1-3/8" SHEILD GUY, 1-3/16"
 GUY & 1-1/4" GUY

THIS IS POLE A
 ON RX 3289



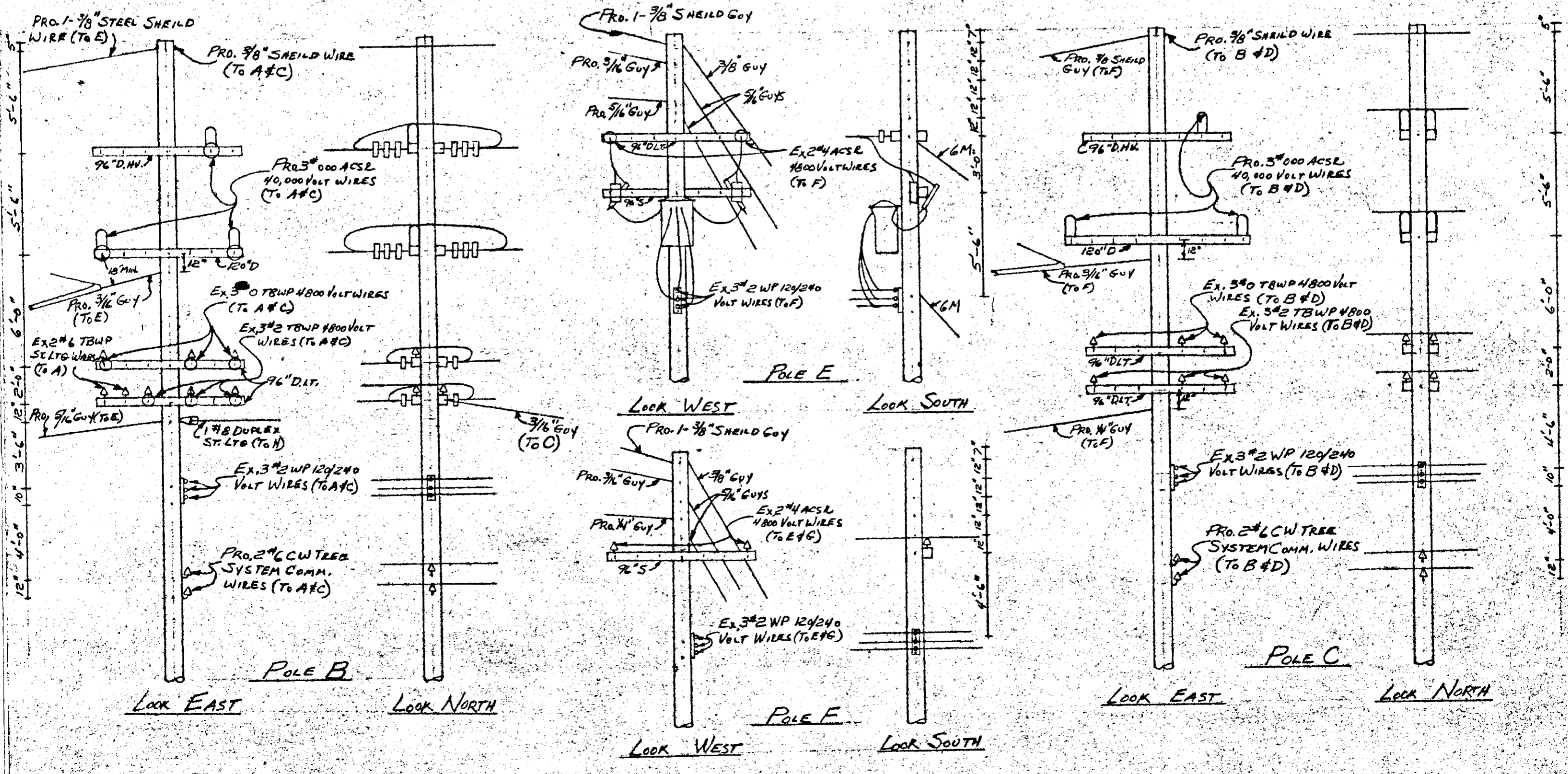
ELEVATION LOOK NORTH



ELEVATION LOOK WEST

ELEVATION LOOK WEST

RECORDED RIGHT OF WAY
 R34635P108



LOOK EAST

LOOK NORTH

LOOK WEST

LOOK SOUTH

LOOK EAST

LOOK NORTH

RECORDED RIGHT OF WAY NO. 34636
P103

R 34636 P103

0 ... Bond: 702 L.O