

STATE OF MICHIGAN

Office of the Michigan Public Utilities Commission, } ss.

I, Clarke W. Brown, Secretary of the Michigan Public Utilities Commission

Do Hereby Certify, That I have compared the annexed copy of Permit ED2-8-161

with the original

recorded in File NO. ED2-8-161

and that it is a true and correct transcript therefrom, and of the whole of such original.

In Testimony Whereof, I have hereunto set my hand and affixed the seal of the Commission, at Lansing, this ninth day of August in the year of our Lord one thousand nine hundred thirty-five.

Clarke W. Brown

Secretary, Michigan Public Utilities Commission

RECORDED RIGHT OF WAY NO. 33227

ps 7

3874

3874

Name of Company

The Detroit Edison Company.

Name and Location of Crossing

Over the Pere Marquette R.R. in Mullet Street, approximately 3' west of R.R. Marker #3625, N.W.  $\frac{1}{4}$  of Section 1, Township 3 north, Range 1 east, Village of Williamston, Williamston Township, Ingham County, Michigan.

Circuits

Proposed one 4800 volt, 60 cycle, 3 wire, 3 phase, distribution circuit.

Poles

- Pole(A) 35' Idaho Cedar, 19" top circumference, 32" butt circumference at ground line set 6' in clay soil.
- Poles(B)(D) 45' Idaho Cedar, 23" top circumference, 42 $\frac{1}{2}$ " butt circumference at ground line set 6'- 6" in clay soil.
- Pole(C) 50' Idaho Cedar, 23" top circumference, 44 $\frac{1}{2}$ " butt circumference at ground line set 7' in clay soil.
- Pole(E) 35' Idaho Cedar, 27" top circumference, 46" butt circumference at ground line set 6' in clay soil.
- Pole(F) 22' Idaho Cedar, 27" top circumference, 36" butt circumference at ground line set 6' in clay soil.
- Pole(Y) 25' Idaho Cedar, 21" top circumference, 30 $\frac{1}{2}$ " butt circumference at ground line set 6' in clay soil.

Guys and Guy Attachments

- One 10M Guy from Pole(C) 40' above ground to Anchor(K) 30' from butt of Pole(C).
  - One 10M Guy from Pole(C) 40' above ground to Anchor(X) 30' from butt of Pole(C).
  - One  $\frac{1}{2}$ " Arm Guy from Pole(B) to Stub(F) 15' above ground.
  - One 5/16" Guy from Stub(F) 15' above ground to Anchor(G) 5' from butt of Stub(F).
  - One 6M Guy from Pole(B) 37' above ground to Stub(Y) 18' above ground.
  - One 6M Guy from Stub(Y) 18' above ground to Anchor(Z) 20' from butt of Stub(Y).
- All guy wire double galvanized stranded steel.

Cross Arms

- Existing one 3 $\frac{1}{4}$ " x 4 $\frac{1}{4}$ " x 96" Douglas Fir, double cross arm per crossing pole.
- Proposed one 3 $\frac{3}{4}$ " x 4 $\frac{3}{4}$ " x 96" Douglas Fir, double buck arm on Pole(C).
- Existing one 3 $\frac{1}{4}$ " x 4 $\frac{1}{4}$ " x 96" Douglas Fir, double buck arm on Pole(B).

Conductors

Proposed 3 #2 A.C.S.R. wires.

*Blanket  
covered*

RECORDED RIGHT OF WAY NO.

33222  
987

### Guy Clamps

Serve 5/16" x 3/8", 1/2" and 6M guys at pole end.

One 3-bolt clamp at anchor end on 5/16" and 3/8" guys.

Two 7/16" U-bolt clamps at anchor end of 1/2" & both ends of 16M guys.

Two 3-bolt clamps at both ends of 5/16" copperweld guys.

### Guy Insulators

O.B. #26500 (or equivalent) in 5/16", 3/8" and 6M guys.

O.B. #25009 (or equivalent) in 1/2", 10M, and 5/16" copperweld guys.

Two insulators per guy for 24,000 volt circuits, and one per guy for distribution circuits.

### Guy Anchors

On 5/16", 3/8" and 6M guys - 8" cone anchor set 5-1/2' deep.

On 10M, 1/2" steel, and 5/16" copperweld guys - 8" expanding anchor set 7-1/2' deep.

On 16M guy, one concrete anchor (8 cu. ft. concrete) 6-1/2' deep.

### Anchor Rods

On 5/16", 3/8" and 6M guys - 5/8" x 6' round galvanized steel.

On 1/2", 5/16" copperweld, 10M, 16M - 3/4" x 8' round galvanized steel.

### Cross Arm Attachments

Center bolts and spacer bolts - 5/8" galvanized steel.

Spacer blocks - 4" x 4" treated pine.

Braces - 1" x 2-1/2" x 30" treated yellow pine for 24,000 volt circuits.

Braces - 1/4" x 1-1/4" x 28" galvanized steel for all other circuits.

Brace bolts - 3/8" galvanized steel bolts at arm and 1/2" x 5" lag screws at pole.

### Pins

Locust 1-3/4" x 13-3/4" x 1-3/8" on arms and 3-3/4" x 3-3/4" x 17" pole top for 24,000 volt circuits.

Locust 1-1/2" x 9" x 1" on 3-1/4" x 4-1/4" arms, and 1-3/4" x 10" x 1" on 3-3/4" x 4-3/4" arms, for all other circuits.

### Insulators

24 kv. circuits - one O.B. #11623 (or equivalent) porcelain pin type and six Thomas #1162 (or equivalent) disk type for dead-end construction, or two O.B. #11623 (or equivalent) for double pin construction.

4800 volt, series lighting, and private telephone circuits - two O.B. #12847 (or equivalent) pin type per wire.

120-240 volt circuits - two Hemingray #20 (or equivalent) glass pin type per wire.

### Note

For strain type construction - on 4800 volt and series lighting circuits, two Lapp #6810 (or equivalent) strain insulators and one O.B. #12847 (or equivalent).

On 120-240 volt circuits - two O.B. #25009 (or equivalent) strain and one Hemingray #20 (or equivalent) glass pin type.

### Ties

Standard top groove tie on 24,000 volt, 4800 volt series lighting and private telephone circuits.

Standard side groove tie on 120-240 volt circuits.

Tie wire - #8 soft bare copper on 24,000 volt, and bare telephone wires. #6 or #8 soft solid weatherproof copper for all conductors having weatherproof covering.

Aluminum armour rods and #10 galvanized iron tie wire for A.C.S.R. conductors.

RECORDED  
RIGHT OF  
WAY NO.  
33222  
187

STATE OF MICHIGAN  
BEFORE MICHIGAN PUBLIC UTILITIES COMMISSION

Standard Railroad Wire-Crossing Permit No. **ED2-8-161**

In Re Application of **Detroit Edison Company (Detroit)**

Pursuant to Act No. 171 of the Session Laws of 1893, as amended, application having been made to Michigan Public Utilities Commission by said

**Detroit Edison Company**

for permission to string wires across the tracks of the

**Pere Marquette Railway Company**

and said

**Detroit Edison Company**

having conformed to the Commission's rules governing the filing of notices and issuing of permits for the construction of electrical lines and said rail way company having waived the right of notice and hearing provided for in said act

THEREFORE, It is ordered that said

**Detroit Edison Company**

be permitted to string the following described wires across the tracks of said railroad at the following described place:

<p><b>In Village of Williamston, ) Ingham County, ) Michigan : - - )</b></p>	<p><b>In Mullet Street, approximately 3 ft. West of R.R. marker #3825 with: 3 - #2 A.C.S.R. wires, 4800 volts, three-phase to replace single- phase circuit .</b></p>
--	---

as indicated on the attached plans, when, as and if approved.

At the point of crossing said wires shall be constructed in accordance with this Commission's rules and regulations.

Given under our hands and the Official Seal of this Commission at the City of Lansing, State of Michigan, this **9th** day of **August** A. D. 19 **35-**

MICHIGAN PUBLIC UTILITIES COMMISSION  
By

**William H. Smith**

Chairman,

**Emerson R. Boyles**

Commissioner,

**Ivan E. Hull**

Commissioner,

**Paul W. Voorhies**

Commissioner,

**Harold J. Waples**

Commissioner.

Countersigned

Secretary

**Clarke W. Brown**

RECORDED RIGHT OF WAY NO. 33222-287

MEMORANDUM FOR THE RECORD

DATE: [illegible]

TO: [illegible]

FROM: [illegible]

[Faint, mostly illegible text at the top of the page]

[illegible]

[illegible]

[illegible]

[illegible]

[illegible]

[illegible]

[illegible]

[illegible]

[illegible]

[illegible]

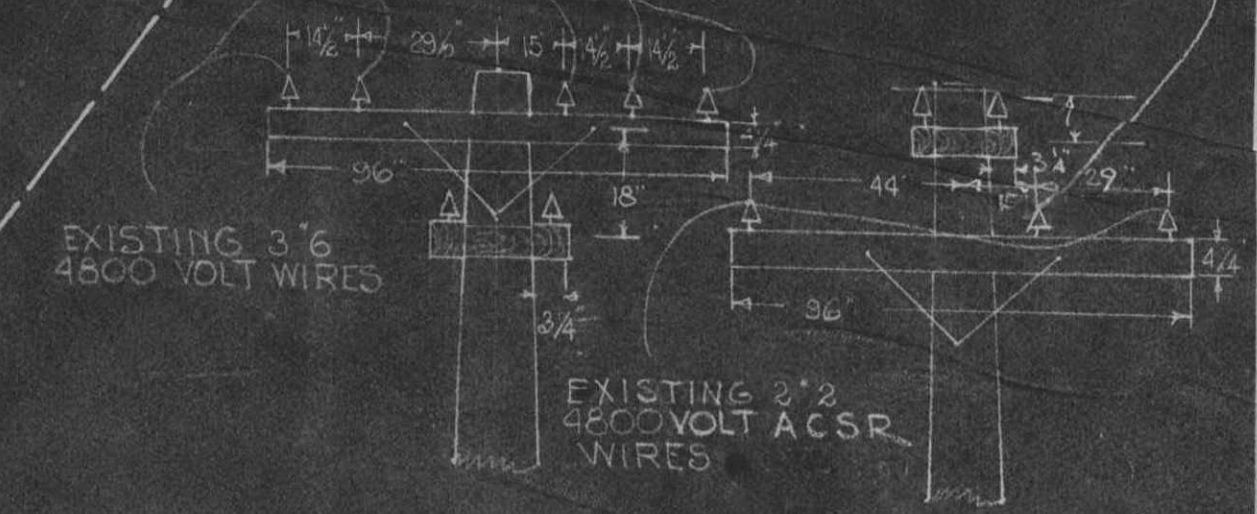
[illegible]

VILLAGE LIMITS OF WILLIAMSTON

HOUSE

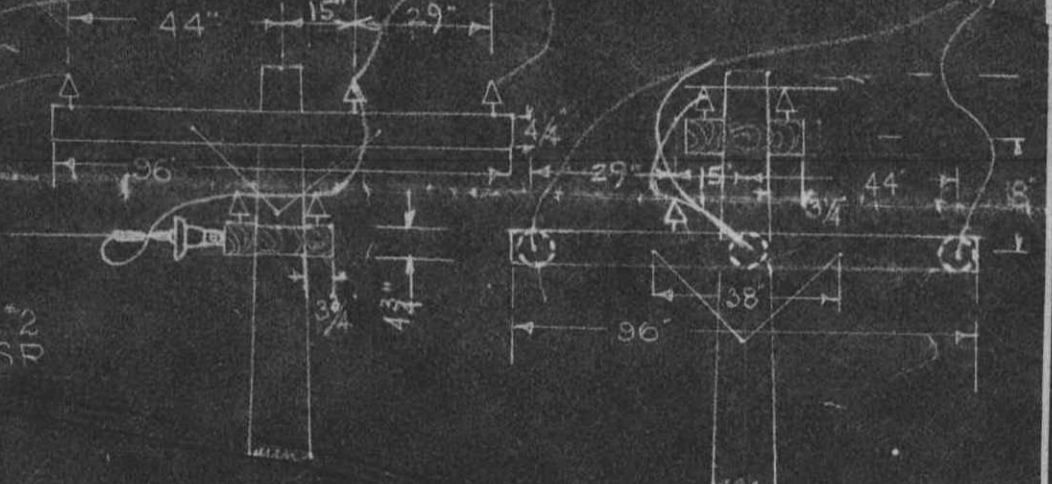
NEW LOCATION OF POLE  
OLD LOCATION OF POLE

EXISTING 2\*6 ST LG WIRES DEAD END FROM WEST  
PROPOSED 1\*2 4800 VOLT ACSR WIRE [IMMEDIATE]



POLE (B) LOOKING EAST POLE (B) LOOKING SOUTH

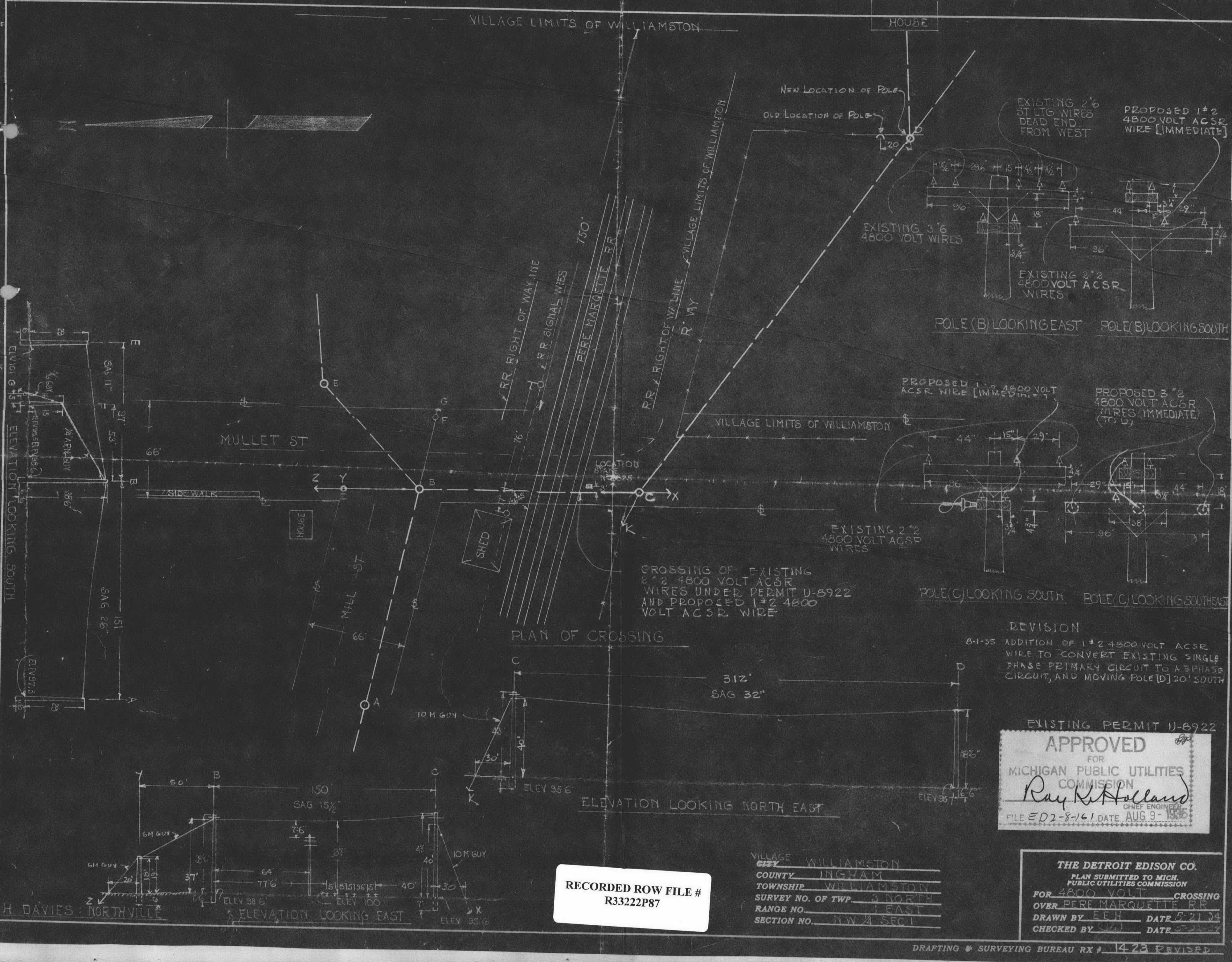
PROPOSED 1\*2 4800 VOLT ACSR WIRE [IMMEDIATE]  
PROPOSED 3\*2 4800 VOLT ACSR WIRES (IMMEDIATE TO D)



POLE (C) LOOKING SOUTH POLE (C) LOOKING SOUTHEAST

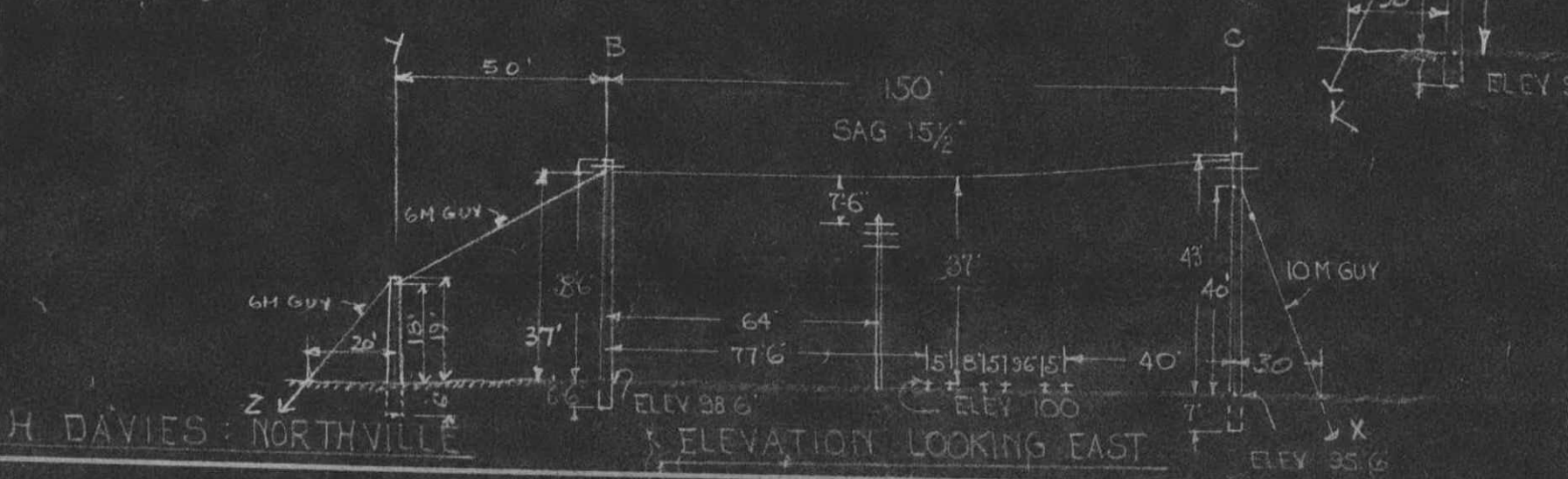
CROSSING OF EXISTING 2\*2 4800 VOLT ACSR WIRES UNDER PERMIT U-8922 AND PROPOSED 1\*2 4800 VOLT ACSR WIRE

PLAN OF CROSSING



312' SAG 32"

ELEVATION LOOKING NORTH EAST



H. DAVIES - NORTHVILLE

ELEVATION LOOKING EAST

REVISION  
8-1-35 ADDITION OF 1\*2 4800 VOLT ACSR WIRE TO CONVERT EXISTING SINGLE PHASE PRIMARY CIRCUIT TO A 3PHASE CIRCUIT, AND MOVING POLE [D] 20' SOUTH

EXISTING PERMIT U-8922  
**APPROVED**  
FOR  
MICHIGAN PUBLIC UTILITIES COMMISSION  
*Ray K. Holland*  
CHIEF ENGINEER  
FILE ED 2-8-161 DATE AUG 9-1935

RECORDED ROW FILE #  
R33222P87

VILLAGE WILLIAMSTON  
CITY INGHAM  
COUNTY WILLIAMSTON  
TOWNSHIP 3 NORTH  
SURVEY NO. OF TWP 1 EAST  
RANGE NO. NW 1/4 SEC 1

**THE DETROIT EDISON CO.**  
PLAN SUBMITTED TO MICH. PUBLIC UTILITIES COMMISSION  
FOR 4800 VOLT CROSSING OVER PERE MARQUETTE RR  
DRAWN BY E.E.H. DATE 5-21-34  
CHECKED BY DATE 5-22-34

RECORDED RIGHT OF WAY NO. 33222  
P87

9861 9-5