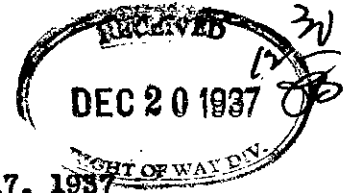


PERE MARQUETTE RAILWAY COMPANY

General Motors Building  
DETROIT, MICH.

G. W. TROUT  
Signal Engineer and Superintendent Telegraph  
H. C. LORENZEN  
Asst. Signal Engineer



December 17, 1937

The Detroit Edison Company,  
2900 Second Avenue,  
Detroit, Michigan

Attention: Mr. T. L. Hinks, Right of Way Agent.

Gentlemen:

This will acknowledge receipt of your application of November 22, 1937, requesting waiver of hearing before the Michigan Public Utilities Commission on behalf of the Detroit Edison Company for permission to construct and maintain an aerial wire line crossing over the tracks and private right of way of the Pere Marquette Railway Company, 103 feet East of the Depot, Village of Melvin, Sanilac County, Michigan; crossing to consist of one circuit of 3 #2 solid copper wires carrying 4800 volts.

The Pere Marquette Railway Company hereby waives hearing before the Michigan Public Utilities Commission for permission to construct and maintain the above aerial wire line crossing with the provision that the construction and maintenance shall conform to the requirements of the Michigan Public Utilities Commission for such aerial wire line crossings.

Yours very truly,

Signal Engineer  
Supt. Telegraph.

WRA:M

Original forwarded direct to the Michigan Public Utilities Commission, Lansing, Michigan.

RECORDED RIGHT OF WAY NO.

33222-1404  
1815-  
2-8-5-5-8-2  
P58  
33222-1404  
1815-  
2-8-5-5-8-2

STATE OF MICHIGAN  
BEFORE MICHIGAN PUBLIC UTILITIES COMMISSION

Standard Railroad Wire-Crossing Permit No. ED2-8-592

In Re Application of **Detroit Edison Company (Detroit)**

Pursuant to Act No. 171 of the Session Laws of 1893, as amended, application having been made to Michigan Public Utilities Commission by said **Detroit Edison Company**

for permission to string wires across the tracks of the **Pere Marquette Ry**

and said **Detroit Edison Company**

having conformed to the Commission's rules governing the filing of notices and issuing of permits for the construction of electrical lines and said rail company having waived the right of notice and hearing provided for in said act

THEREFORE, It is ordered that said **Detroit Edison Company**

be permitted to string the following described wires across the tracks of said railroad at the following described place:

In Village of Melvin, Sanilac County | at end of Garfield St. 103 ft. E. of Depot  
in NE $\frac{1}{4}$  of Section 30, T 9N, R 14 E, Speaker Twp.  
3-#2 TBWP Solid Copper @ 4800 volts

as indicated on the attached plans, when, as and if approved.

At the point of crossing said wires shall be constructed in accordance with this Commission's rules and regulations.

Given under our hands and the Official Seal of this Commission at the City of Lansing, State of Michigan, this 27th day of December A. D. 19 37

MICHIGAN PUBLIC UTILITIES COMMISSION  
By

----- Paul H. Todd -----  
Chairman,

----- Joseph M. Donnelly -----  
Commissioner,

----- Glenwood C. Fuller -----  
Commissioner,

Countersigned

----- Albert A. Wagner -----  
Secretary

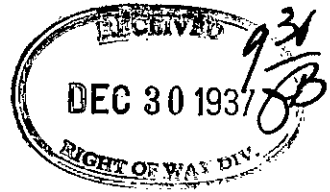
----- Charles S. Forritt -----  
Commissioner,

----- Howell Van Auken -----  
Commissioner.

RECORDED RIGHT OF WAY NO.

33222 (pt. 2)  
P58

Pi 1815



STATE OF MICHIGAN  
Office of the Michigan Public Utilities Commission, } ss.

I, Albert A. Wagner, Secretary of the Michigan Public Utilities Commission

Do Hereby Certify, That I have compared the annexed copy of Permit ED2-8-592

with the original

recorded in File ED2-8-592

and that it is a true and correct transcript therefrom, and of the whole of such original.

In Testimony Whereof, I have hereunto set my hand and affixed  
the seal of the Commission, at Lansing, this 27th  
day of December in the year of our Lord  
one thousand nine hundred thirty-seven

*Albert A. Wagner*  
Secretary Michigan Public Utilities Commission

4411

4411

RECORDED RIGHT OF WAY NO. 33222 (pt. 2)  
P58

THIS EXISTING RAILROAD CROSSING IS BEING REBUILT (AND WITHIN THE CORPORATE LIMITS OF A VILLAGE) SO THAT THERE IS NO RESPONDING APPLICATION FOR A DISTRIBUTION LINE EXTENSION PERMIT.

RX 1815

**THE DETROIT EDISON CO.**

PLAN SUBMITTED TO MICHIGAN PUBLIC UTILITIES COMMISSION FOR OVERHEAD LINE CROSSING

OVER PERE MARQUETTE R R  
 IN PRIVATE PROPERTY 103 EAST OF DEPOT  
 CITY OF VILLAGE OF MELVIN NE 1/4 SECTION 30  
SPEAKER TOWNSHIP T 9N R 14E SANILAC COUNTY

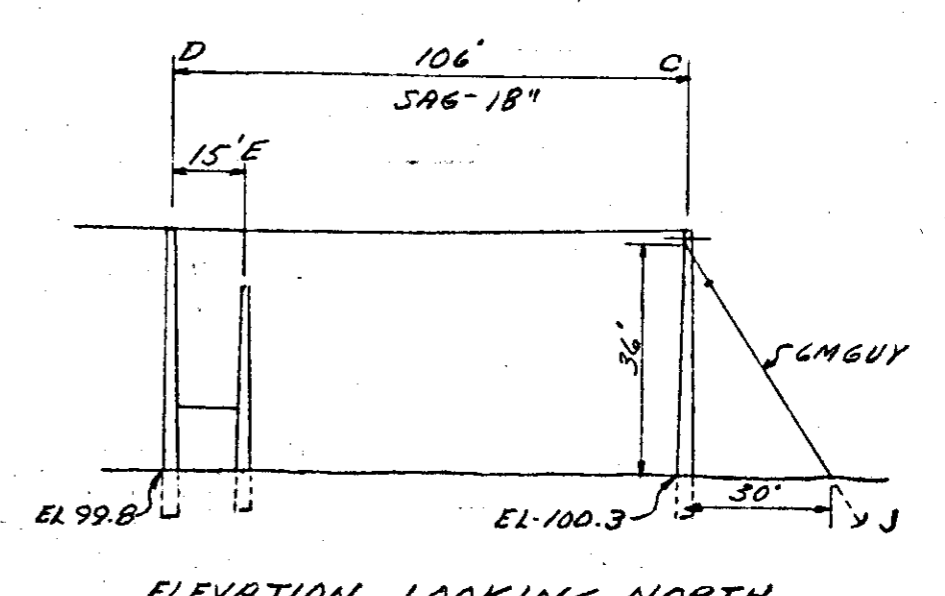
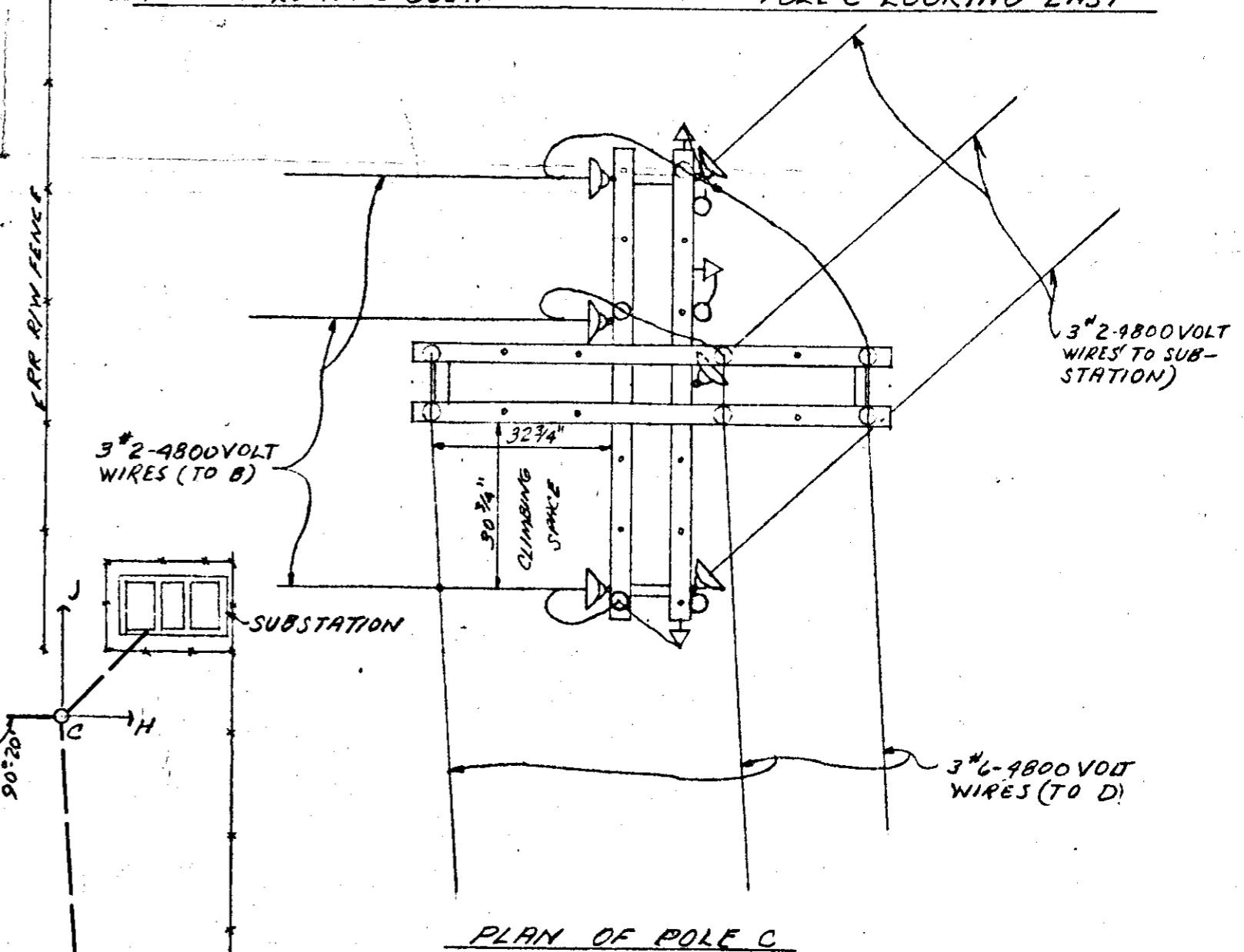
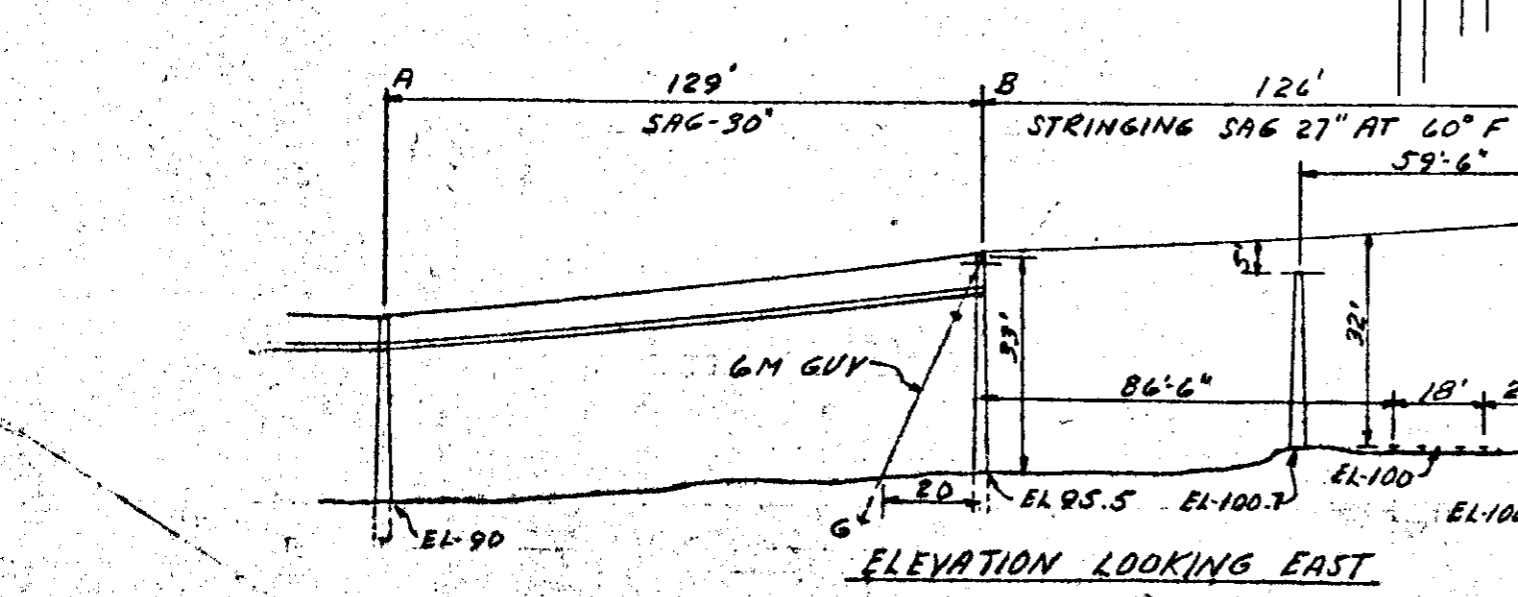
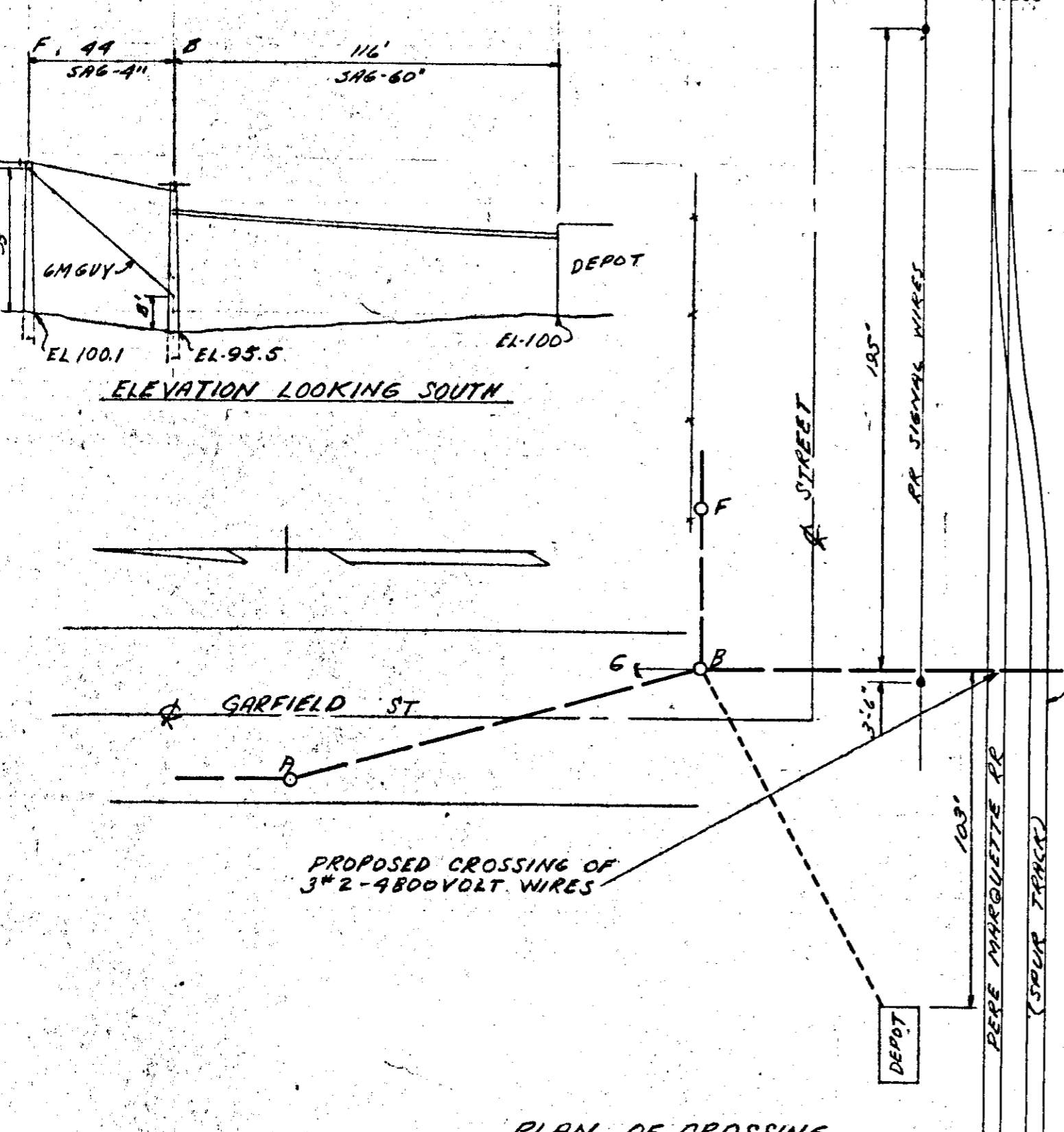
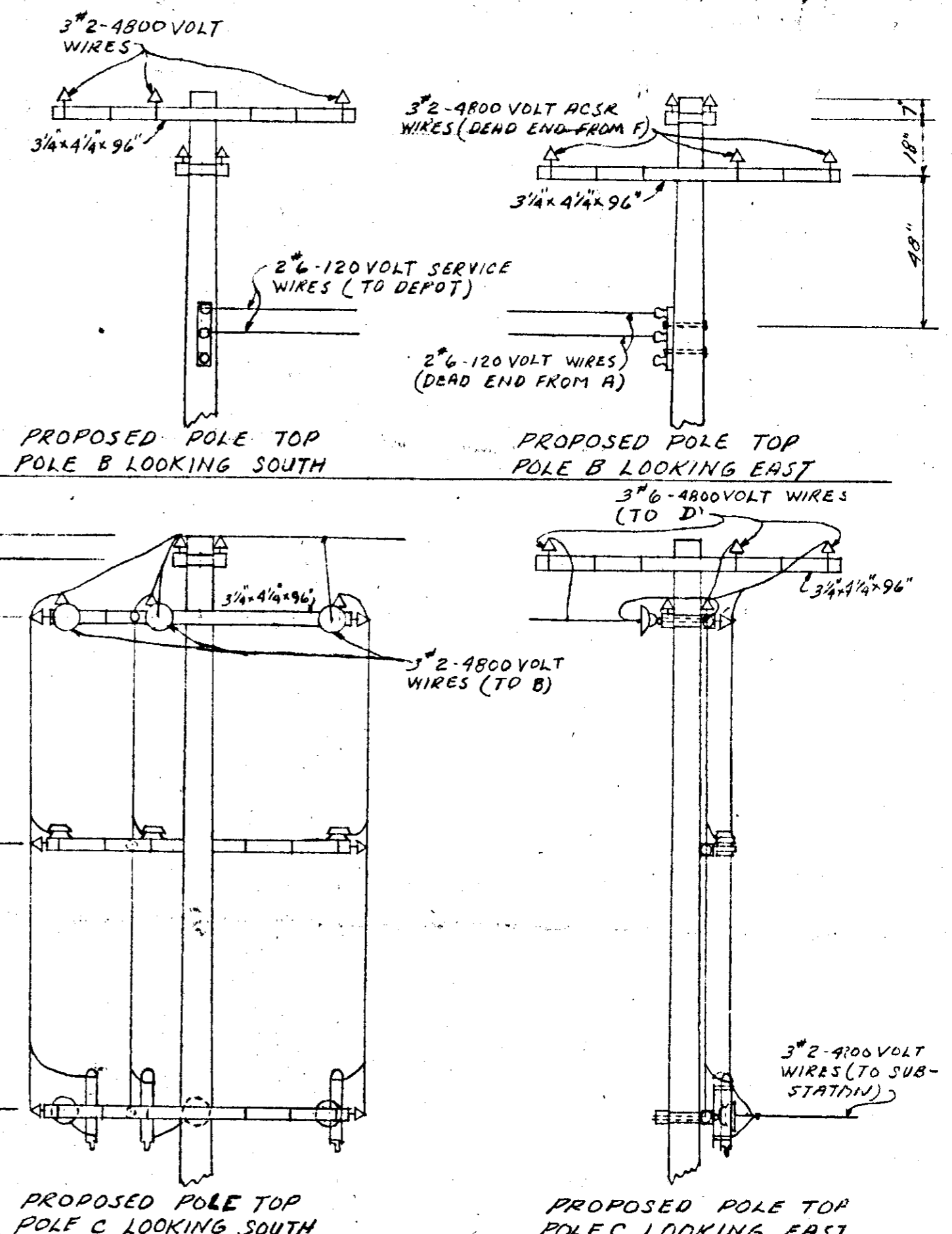
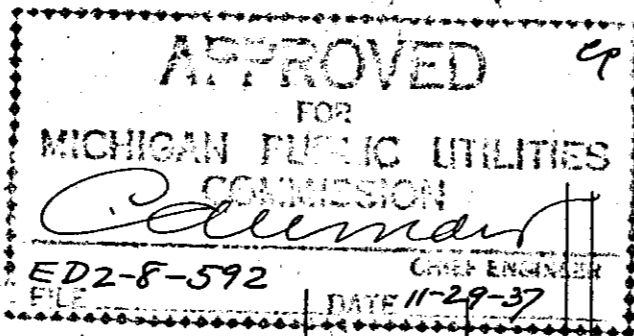
CIRCUITS					CONDUCTORS		
NUMBER	VOLTAGE	CYCLES	PHASE	USE	WIRES	SIZE	KIND
ONE	4800	60	3	1ST	3	#2	HTBWP SOLID COPPER

POLES							
LOCATION	LENGTH	MATERIAL	MIN CIRCUMFERENCE		DEPTH OF SETTING	KIND OF SETTING	
			AT TOP	AT GROUND			
A	35'	WESTERN CEDAR	21"	35"	6'	CLAY	SOIL
B	40'	"	25"	43 1/2"	6'	"	"
C	45'	"	25"	45 1/2"	6'-6"	"	"
D	45'	"	23"	42 1/2"	6'-6"	"	"
E	35'	"	21"	36"	6'	"	"
F	40'	"	23"	41"	6'	"	"

**NOTE**  
 MATERIALS SHALL BE AS NOTED IN THE DETROIT EDISON COMPANY'S STANDARD SPECIFICATIONS FOR OVERHEAD LINE CONSTRUCTION AT RAILROAD CROSSINGS ISSUED DECEMBER 23, 1935.

**PURPOSE OF LINE**  
REBUILDING CROSSING TO CONFORM WITH SAFETY CODE SPECIFICATIONS

DRAWN BY WSM DATE 11-8-37 CHECKED BY JW DATE 11-9-37



RECORDED ROW FILE #  
 R3322P58

HARDWICK-SANDUSKY

DRAFTING & SURVEYING BUREAU RX 1815

RECORDED RIGHT OF WAY NO. 33222 (pt. 2)  
p. 38