

F845264
G486671

LI18587 PA118

LI20801 PA706

APARTMENTS

AGREEMENT - EASEMENT - RESTRICTIONS

This instrument made this 16 day of AUGUST, 1973, by and between the undersigned Owners and THE DETROIT EDISON COMPANY, a corporation organized and existing concurrently under the laws of the states of Michigan and New York, of 2000 Second Avenue, Detroit, Michigan, 48226, hereinafter called "EDISON", and MICHIGAN BELL TELEPHONE COMPANY, a Michigan corporation, of 1365 Cass Avenue, Detroit, Michigan, 48226, hereinafter called "BELL."

W I T N E S S E T H :

WHEREAS, Owners are erecting apartments known as The Winds, on land in the Township of Canton, County of Wayne, State of Michigan, as described in Appendix "A", attached hereto and made a part hereof, and EDISON and BELL will install their electric and communication facilities underground except necessary above ground equipment.

NOW, THEREFORE, in consideration of the mutual promises and covenants for the installation of underground utility service made by the parties hereto, it is hereby agreed:

(1) The installation, ownership and maintenance of electric services and the charges to be made therefor shall be subject to and in accordance with the Orders and Rules and Regulations adopted from time to time by the Michigan Public Service Commission.

(2) Owners must certify to EDISON and BELL that the easements are graded to within four (4") inches of final grade before the underground facilities are installed.

(3) Owners further agree that if subsequent to the installation of the utility facilities of EDISON and BELL, it is necessary to repair, move, modify, rearrange or relocate any of their facilities to conform to a new plot plan or change of grade or for any cause or changes attributable to public authority having jurisdiction or to Owners action or request, Owners will pay the cost and expense of repairing, moving, rearrangement or relocating said facilities to EDISON or BELL upon receipt of a statement therefor. Further, if the lines or facilities of EDISON and BELL are damaged by acts of negligence on the part of the Owners or by contractors engaged by Owners, repairs shall be made by the utilities named herein at the cost and expense of the Owners and shall be paid to EDISON or BELL upon receiving a statement therefor. Owners are defined as those persons owning the land at the time damage occurred.

(4) Owners hereby grant to EDISON and BELL easement for electric and communication underground services in land herein described. When utility lines are installed, this instrument shall be re-recorded with an "as installed" drawing showing the location of utility facilities in relation to building lines and indicating the easements by their centerlines. Easements herein granted shall be six (6') feet in width unless otherwise indicated on said drawing. However, secondary electric service and communication entrance line locations, as shown on an installed drawing are not guaranteed; actual locations can be determined after contact with utilities.

(5) Owners to pay the cost of conduit for electric and/or communication facilities to accommodate patios or similar site conditions.

(6) Easements herein granted are subject to the following restrictions and additional conditions:

a. Said easements shall be subject to Order of and the Rules and Regulations adopted from time to time by the Michigan Public Service Commission.

"THIS EASEMENT IS RE-RECORDED FOR PURPOSES OF SHOWING THE PLANNED AS INSTALLED" CENTERLINES OF EASEMENTS GRANTED AS SHOWN ON DRAWING ATTACHED HERETO".

DETROIT MICHIGAN 48226
5000 SECOND AVENUE

RECORDED AUG 31 1973
BERNARD J. YOUNGBLOOD, Register of Deeds
WAYNE COUNTY, MICHIGAN 48226

RETURN TO
W. C. ARNOLD
THE DETROIT EDISON COMPANY
2000 SECOND AVENUE
DETROIT, MICHIGAN 48226

F845264

G486671

RECORDED RIGHT OF WAY NO.

33052

MAR 8 1980

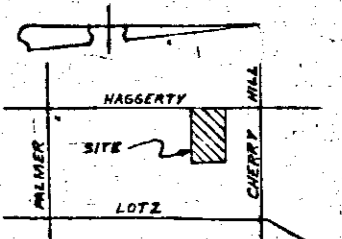
FOREST E. YOUNGBLOOD, Register of Deeds
WAYNE COUNTY, MICHIGAN 48226

RE-RECORDED

NORTH
ARROW

LOCATION SKETCH

U.G. MAP SEC. NOS. CAN. 62-2



N.W. COR. SEC. 24
T. 2 S., R. 8 E.

TRANSFORMER DATA

STEP	U.D.T. NO.	SIZE	ED. STK. NO.
STEP IA	M555-1	50	661-1152
	M570-1	25	-1151
STEP I	M555-3	50	-1152
	M570-1	50	-1152
	-2	50	1152
	-3	50	1152
	-4	50	1152
STEP II	M570-6	50	1152
	M555-4	50	1152
	M561-1	25	1151
STEP III	M561-1	2	
	M561-2	3	
	M561-3	4	
	M561-5	50	661-1152
	M561-6	25	-1151
	M561-7	25	-1151
	M564-1	50	-1152
	2	50	-1152
	3	50	-1152
	4	50	-1152
	5	50	-1152
	6	25	-1151
	7	25	661-1151

NO. OF PEDESTALS 1 (STEP IA) / 1 TEMP. STEP II

- CODE -

- TEMPORARY SECONDARY PEDESTAL
- ⊗ DFT (DEAD FRONT TYPE)
- DUT (NON-SWITCHING-LIVE FRONT TYPE)
- ⊗ DUT (SWITCHING-LIVE FRONT TYPE)
- ← DIRECTION OF TRANSFORMER DOOR OPENING
- SECONDARY PEDESTAL
- ▲ SECONDARY TERMINAL
- ⊙ CABLE POLE
- ⊞ PRIMARY SWITCH CABINET
- BURIED PRIMARY CABLE-ALL VOLTAGES
- BURIED SECONDARY CABLE
- BURIED SECONDARY SERVICE CABLE
- DETROIT EDISON TRENCH ONLY
- TELEPHONE TRENCH ONLY
- SEWER
- WATER
- GAS
- PROPOSED CONDUIT

STEP	Rev "C"	Rev "C"	Rev "C"	Rev "C"
STEP III	1,430'	640' + 30' BORE	1,370'	713-3064
STEP II	1,020'	260' + 50' BORE	630'	719-3019
STEP I	100'	80'	80'	
TOTAL	2,550'	900' + 80' BORE	2,080'	

SITE Supt. DON FOWLER
PHONE NO. 729 5180

GENERAL NOTES

TRENCHING TO BE DONE BY D.E. CO. I.M.B.T.

TRENCH AND CABLE LENGTHS ARE APPROXIMATE.

SEE DRAWING UH-2366 FOR TRANS. MAT. DETAILS.

SEE PAGE 32-11 (S.I.M.) DETAIL " " FOR ENTRANCE POINT DETAILS (APTS ONLY).

SEE DRAWING UH-2365 FOR PLACEMENT OF CABLES, TRANSFORMERS AND PEDESTALS (SUBS ONLY).

D.E. SERVICE PLANNER: AL CASSELL 795 1650

TEL. CO.:

CONTACT "MISS DIG" 900-482-711 BEFORE DOING ANY EXCAVATION.

EASEMENTS INDICATED BY OUR CENTERLINES ARE SIX FEET IN WIDTH UNLESS OTHERWISE NOTED.

(STEP III) 79A-34379, 367 B13 J494

(STEP II) A-34289, 367 B13 J396

(STEP I) A-34023, 367 B13 J544

PERMITS REQUIRED
CANTON TWP.

DEPT. ORDER A-34379
WORK ORDER 367B13J494
START: 10-22-79
FINISH: 12-20-79
LABOR-HEATH ENERGY INC.

REVISION	DATE	BY	DESCRIPTION
E	10-22-79	S.F.Z.	SHOW STEP III
D	10-22-79	S.F.Z.	REVISE STEP II SEC. SERV. TO 3/0 CHANGE STREET NAMES
C	10-22-79	S.F.Z.	REVISE STEP II CABLE & TRENCH SUMMARY SEE SHEET TWO
B	10-22-79	S.F.Z.	SHOW STEP II
A	10-22-79	S.F.Z.	SHOW STEP I

SCALE	NUMBER OF SHEETS	WORK ORDER NUMBER
1"=30'	3 OF 3	367 B13 J494
LATEST REVISION	DISTRIBUTION CIRCUIT	
E	BIBS SHELTON / 13.2 K.V.	
DEPT. ORDER NUMBER		
LI-30251		
SHEET 1 OF 2 SHEETS		

WAYNE CO. M.I.H. STEP III 79A-34379

RETURN TO:
Real Estate, R/W & Claims
8750 Telegraph (Rm. 225)
Taylor, MI 48180

RECORDED RIGHT OF WAY NO. 33052

33052

RETURN TO:
Real Estate, R/W & Claims
8750 Telegraph (Rm. 225)
Taylor, MI 48180

RETURN TO:
Real Estate, R/W & Claims
8750 Telegraph (Rm. 225)
Taylor, MI 48180

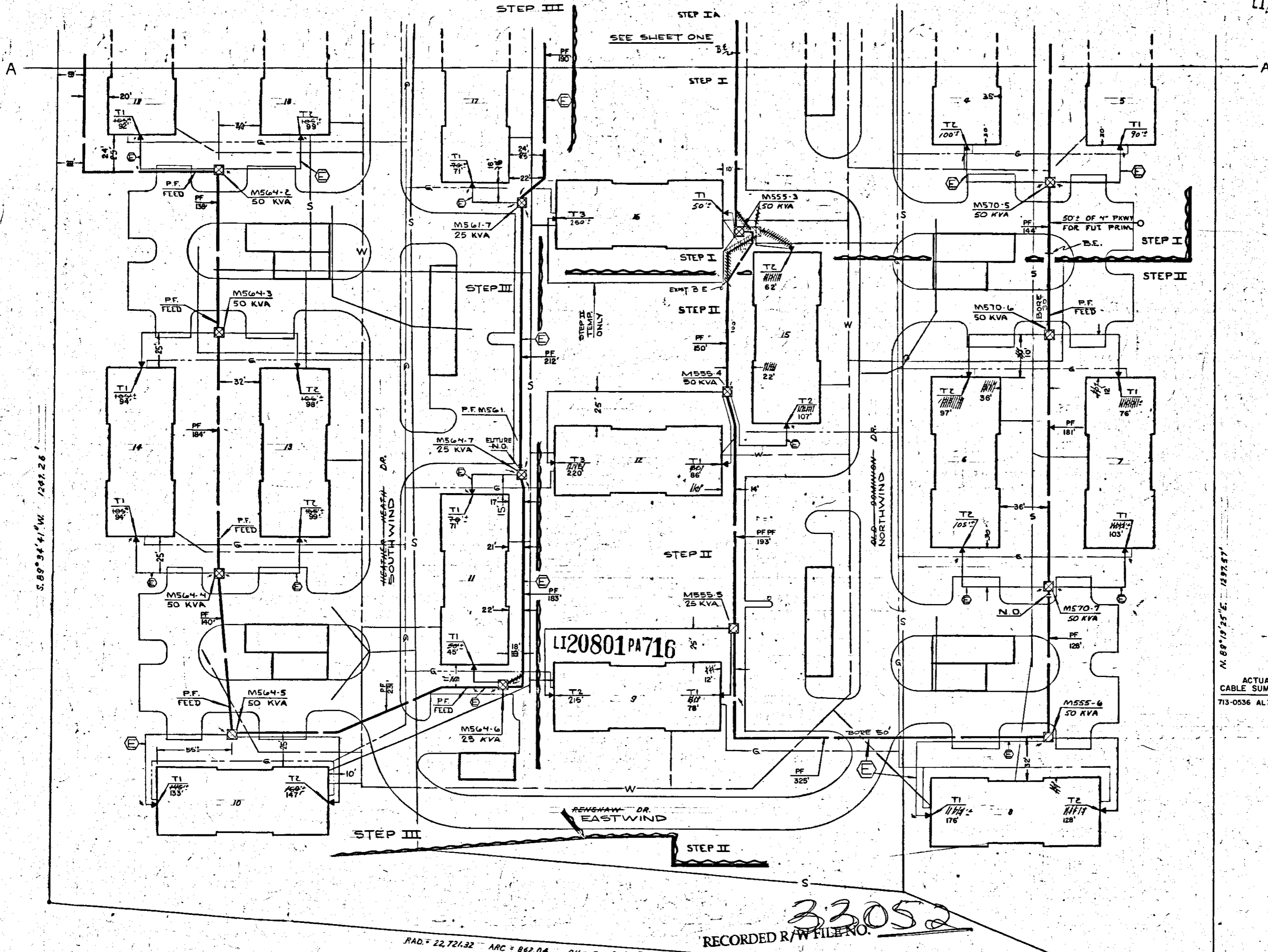
LI20801PA714

NORTH ARROW

LOCATION SKETCH

U. G. MAP SEC. NOS. CAN 62-2

LI20801PA715



TRANSFORMER DATA

U.D.T. NO.	SIZE	ED. STK. NO.

- TRANSFORMER SPECS.**
 PEDESTAL SPEC.-R13
 NO. OF PEDESTALS _____
- CODE -**
- ⊙ TEMPORARY SECONDARY PEDESTAL
 - ⊠ DFT (DEAD FRONT TYPE)
 - ⊞ UDT (NON-SWITCHING-LIVE FRONT TYPE)
 - ⊞ UDT (SWITCHING-LIVE FRONT TYPE)
 - ← DIRECTION OF TRANSFORMER DOOR OPENING
 - SECONDARY PEDESTAL
 - ⊙ SECONDARY TERMINAL
 - ⊙ CABLE POLE
 - ⊞ PRIMARY SWITCH CABINET
 - BURIED PRIMARY CABLE—ALL VOLTAGES
 - BURIED SECONDARY CABLE
 - BURIED SECONDARY SERVICE CABLE
 - DETROIT EDISON TRENCH ONLY
 - TELEPHONE TRENCH ONLY
 - SEWER
 - WATER
 - GAS
 - PROPOSED CONDUIT

LI20801PA717

ACTUAL CABLE SUMMARY

ITEM #	DESCRIPTION	QUANTITY	UNIT
713-0536	AL36 X 28 & X1	1121'	STEP II

CABLE SUMMARY

ITEM #	DESCRIPTION	QUANTITY	UNIT
713-3028	2APEC X 1 13.2 KV		
713-0537	AP2 2/0 & 1-#1		

TRENCH SUMMARY

JOINT USE	QUANTITY
D. E. ONLY	
TEL. ONLY	
TOTAL	

SITE SUPT. _____
 PHONE NO. _____

- GENERAL NOTES -

- TRENCHING TO BE DONE BY
- TRENCH AND CABLE LENGTHS ARE APPROXIMATE.
- SEE DRAWING U4-2368 FOR TRANS. MAT. DETAILS.
- SEE PAGE 3-211 (S.I.M.) DETAIL " " FOR ENTRANCE POINT DETAILS (APTS. ONLY)
- SEE DRAWING U4-2263 FOR PLACEMENT OF CABLES, TRANSFORMERS AND PEDESTALS (SUB'DS ONLY).
- D.E. SERVICE PLANNER:
- TEL. CO.:

CONTACT "MISS DIG" 800-477-7171 BEFORE DOING ANY EXCAVATION.
 EASEMENTS INDICATED BY OUR CENTERLINES ARE (B) SIX FEET IN WIDTH UNLESS OTHERWISE NOTED.

PERMITS REQUIRED

RAD. = 22,721.32 ARC = 862.04 CH. = 5.03°/11'47" W. 861.89'

RECORDED R/W FILE NO. 33052

STEP III			STEP II		
DEPT ORDER A-34379	WORK ORDER 367B13J494	START 10-22-79	DEPT ORDER A-34289	WORK ORDER 367B13J396	START 5-1-79
FINISH 12-20-79	LABOR HEATH ENERGY INC.		FINISH 5-9-79	LABOR HEATH ENERGY INC.	
AS INSTALLED IN FIELD FOR RECORDING	SHOW STEP III	AS INSTALLED IN FIELD FOR RECORDING	REVISE STEP II	REVISE STEP II	SHOW STEP II
DO. 79A-34379	W.O. 367 B13 J494	DO. 79A-34289	SEC SERV TO 3/0	SEC SERV TO BLDG'S	Note Service Bldg # 15
IN 3/0 SERV CABLE		CHANGE STREET NAMES	# 6, 7, 8, 9, 12, & 15	FROM (UDT M555-3, STEP2)	
DRAWN BY: SEZ	CHECKED BY: [Signature]	DRAWN BY: SEZ	CHECKED BY: [Signature]	DRAWN BY: [Signature]	CHECKED BY: [Signature]
APPROVED BY: [Signature]	APPROVED BY: [Signature]	APPROVED BY: [Signature]	APPROVED BY: [Signature]	APPROVED BY: [Signature]	APPROVED BY: [Signature]

REVISION	DESCRIPTION	DATE
F	AS INSTALLED IN FIELD FOR RECORDING	
G	REVISE STEP II SEC SERV TO 3/0 CHANGE STREET NAMES	
H	REVISE STEP II SEC SERV TO BLDG'S FROM (UDT M555-3, STEP2)	
I	SHOW STEP II	
J	SHOW STEP I	

DRAWN BY	CHECKED BY	APPROVED BY	DATE	JOB TITLE
[Signature]	[Signature]	[Signature]	8-2-79	
[Signature]	[Signature]	[Signature]	8-7-79	
[Signature]	[Signature]	[Signature]	10-1-79	

WINDS WEST APTS.
 PART OF THE N.W. 1/4 SEC. 24, T. 2S., R. 8E.
 CANTON TWR.

WAYNE CO. MICH.

DEPT. ORDER NUMBER: LI-30251
 SHEET 2 OF 2
 STEP III 79A-34379

RECORDED RIGHT OF WAY NO. 33052

RETURN TO:
Real Estate, R/W & Claims
8750 Telegraph (Rm. 225)
Taylor, MI 48180

RETURN TO:
Real Estate, R/W & Claims
8750 Telegraph (Rm. 225)
Taylor, MI 48180

33052