

# **RAILROAD RIGHT OF WAY**

**DOCUMENT(S) WILL BE SCANNED  
AT A LATER TIME**

**RECORDED RIGHT OF WAY NO. 732887**

B-20269 RX 3955C

PROPOSED LINE CROSSING OVER PENN CENTRAL RAILROAD  
IN GULLEY ROAD APPROX 275' SOUTH OF TROWBRIDGE CITY OF DEARBORN HEIGHTS

EXISTING PERMIT NUMBER 3955B  
CITY OF DEARBORN HEIGHTS

SECTION N1W TOWNSHIP T 25 R 10E COUNTY WAYNE

NOTES

MATERIALS SHALL BE AS NOTED IN THE CURRENT REVISION OF DETROIT EDISON COMPANY'S GENERAL SPECIFICATIONS FOR OVERHEAD LINE CONSTRUCTION AT RAILROAD CROSSINGS.

ACTUAL FIELD DIMENSIONS MAY VARY SOMEWHAT FROM THOSE SHOWN, BUT THE REQUIREMENTS OF THE CURRENT REVISIONS OF ORDER NO'S. 1679 AND 1868 OF MICHIGAN PUBLIC SERVICE COMMISSION WILL BE COMPLIED WITH.

MINIMUM CLEARANCES		
NEAREST POLE TO RAIL	SIDING	7 FT
	MAIN LINE	12 FT
WIRES OVER TRACKS	0 - 750 VOLTS	27 FT
	750 - 15,000 VOLTS	28 FT
	15,000 - 50,000 VOLTS	30 FT
	50,000 - 120,000 VOLTS	33 FT
WIRES OVER R R SIGNAL	0 - 750 VOLTS	2 FT
	750 - 8,700 VOLTS	4 FT
	8,700 - 50,000 VOLTS	6 FT
	50,000 - 120,000 VOLTS	9 FT

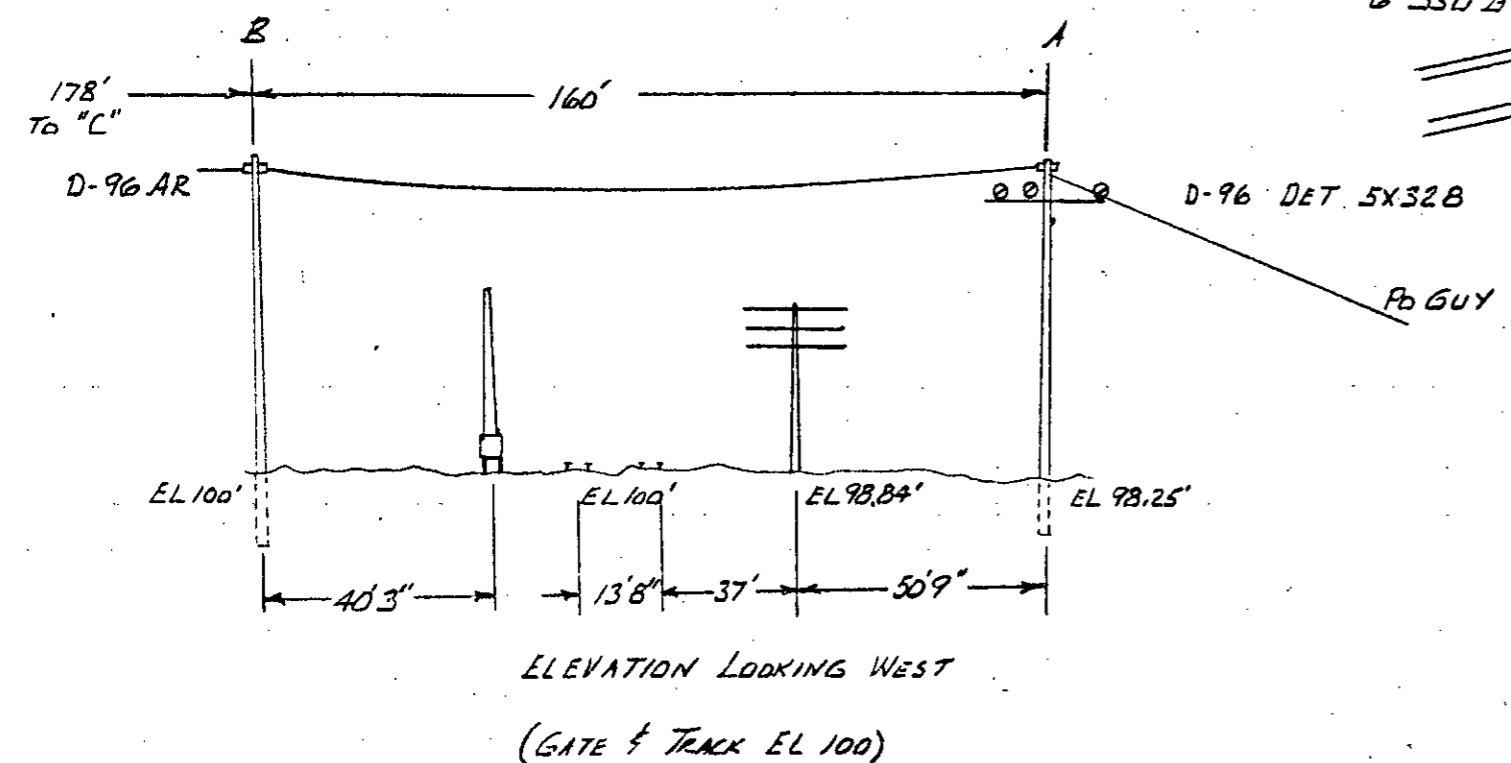
CONDUCTORS				POLES			
NUMBER	SIZE	KIND	VOLTAGE	LOCATION	LENGTH	CLASS	SET
SPAN EF				E	55	1	WOOD
				F	70	1	WOOD
6	#350	AL	4800V				
2	#1/16	STEEL	GUY'S				
SPAN A-B				A	50	1	WOOD
				B	45	4	WOOD
3	#0	AL	4800V				

DESIGNED BY E.L. REHBERG DIVISION DETROIT  
CHECKED BY D.J. PHILLIPS SYSTEM ENGINEERING DEPT. DATE 5-15-79

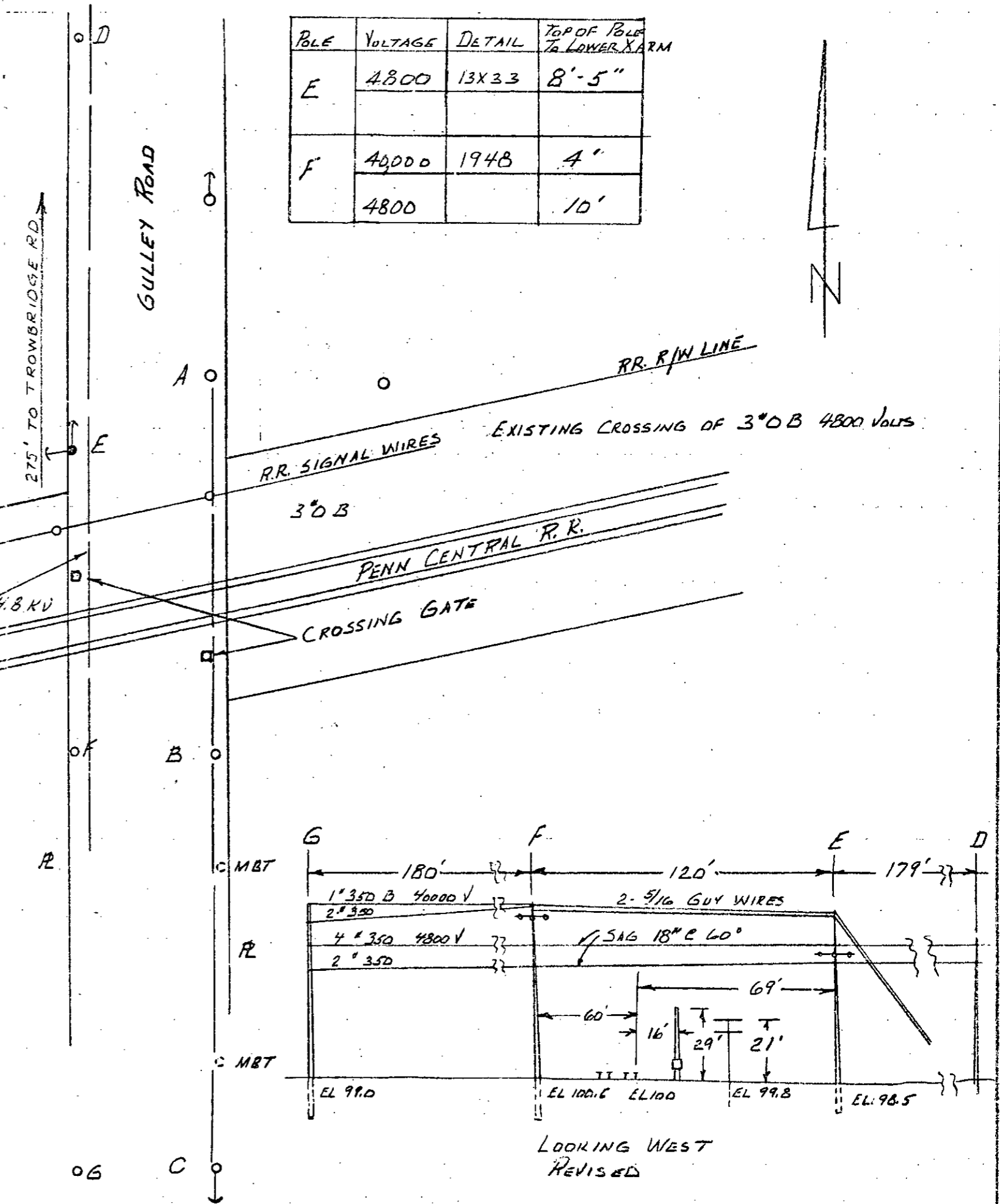
SPAN	SPAN LENGTH	LOWEST CONDUCTOR OVER R. R. TRACKS	STRINGING SAG AT 60° F	HEIGHT OF LOWEST CONDUCTOR OVER	
				R. R. TRACKS	R. R. SIGNAL WIRE
A-B	160'	#0 B	30" (FINAL 39.6)	34' 4"	121 OVERGATE 8' 4"
F-E	120'	#350 B	18"	37' 7"	16' 5" " 8' 7"

SAG TABLE  
RULING SPAN \_\_\_\_\_  
FINAL SAG RATIO \_\_\_\_\_

THIS CROSSING REVISED 4-30-79  
E.L. REHBERG



POLE	VOLTAGE	DETAIL	TOP OF POLE TO LOWER ARM
E	4800	13X33	8'-5"
F	40000	194B	4'
	4800		10'



RECORDED RIGHT OF WAY NO. 32887

PROPOSED LINE CROSSING OVER FEIN. CENTRAL RAILROAD  
IN GULLEY ROAD, APPROX. 875' SOUTH OF TROWBRIDGE  
EXISTING PERMIT NUMBER ED2-B-1206  
CITY OF DEARBORN

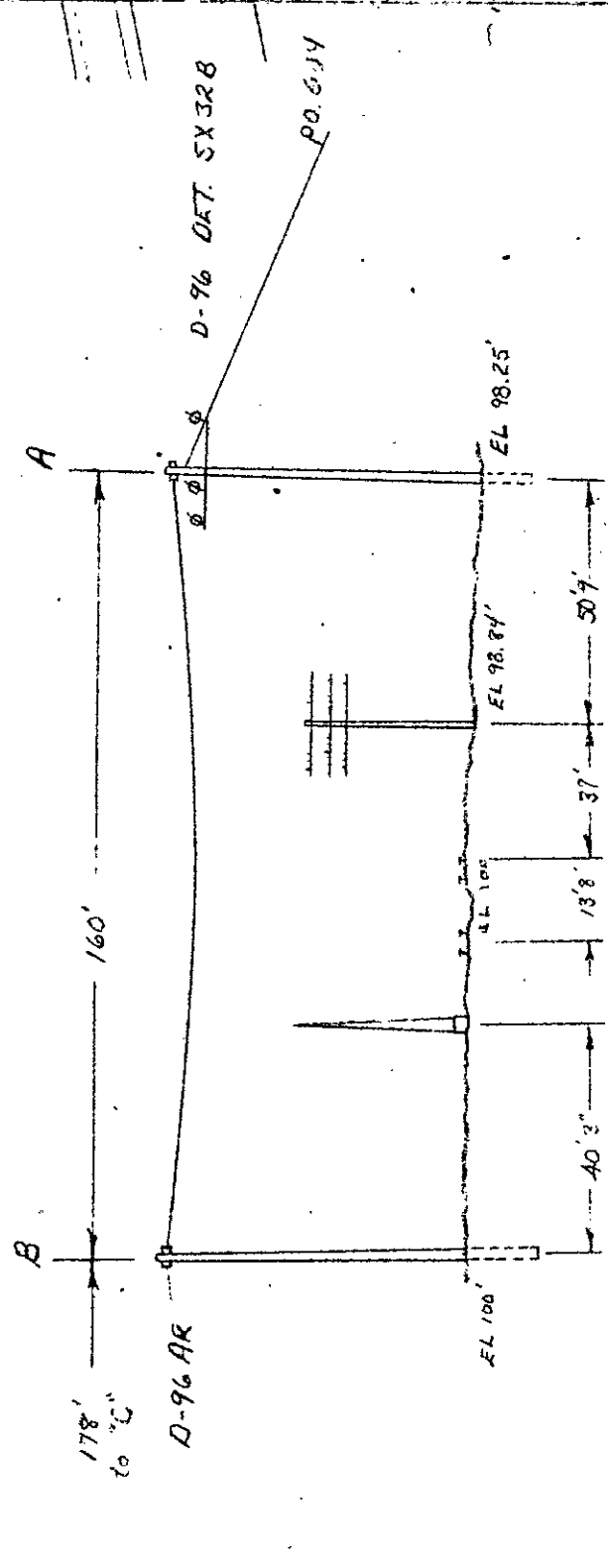
SECTION T 25 R 10E COUNTY WAYNE TOWNSHIP WAYNE

NOTES		CONDUCTORS		POLES			
NUMBER	SIZE	KIND	VOLTAGE	LOCATION	LENGTH	CLASS	TYPE
MATERIALS SHALL BE AS NOTED IN THE DETROIT EDISON COMPANY'S GENERAL SPECIFICATIONS FOR OVERHEAD LINE CONSTRUCTION AT RAILROAD CROSSINGS DATED MARCH 1925.		SPAN <u>EF</u>		A	45	1	WOOD
ACTUAL FIELD DIMENSIONS MAY VARY SOMEWHAT FROM THOSE SHOWN BUT THE REQUIREMENTS OF ORDER NO. 1679 OF MICHIGAN PUBLIC SERVICE COMMISSION AS REVISED JAN. 1, 1944, WILL BE COMPLIED WITH.		PREPARED		B	45	4	"
MINIMUM CLEARANCES		350 B		C	45	3	"
NEAREST POLE TO RAIL	SIDING 7 FT MAIN LINE 12 FT	4800V		D	55	1	"
WIRES OVER TRACKS	0-750 VOLTS 27 FT 750-15,000 VOLTS 28 FT 15,000-50,000 VOLTS 30 FT	4800V		E	60	1	"
WIRES OVER R SIGNAL	0-750 VOLTS 2 FT 750-15,000 VOLTS 4 FT 15,000-50,000 VOLTS 6 FT	4800V		F	60	1	"
		4800V		H	45	1	"

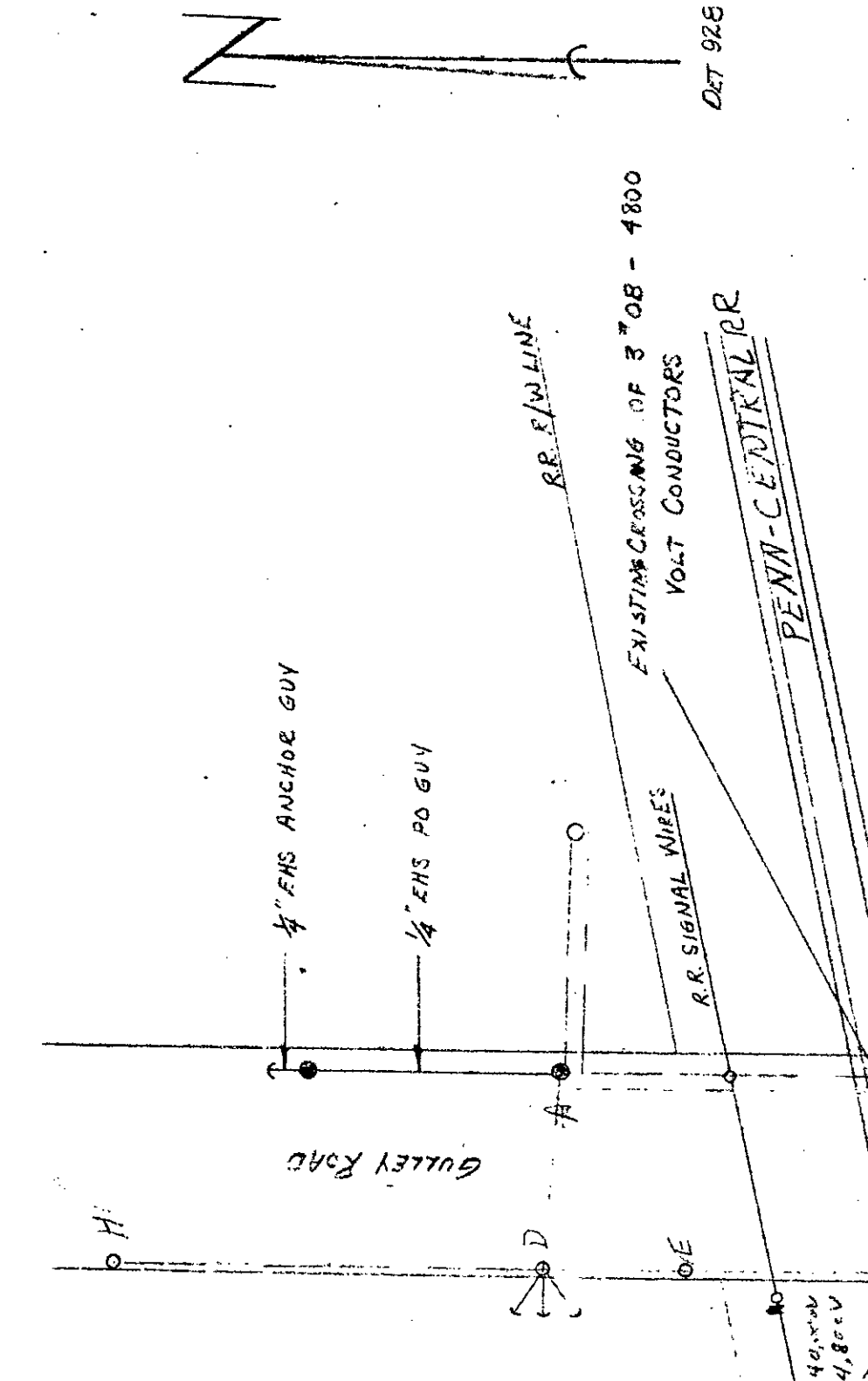
SPAN	SPAN LENGTH	LOWEST CONDUCTOR OVER R.R. TRACKS	STRINGING SAG AT 60°F	HEIGHT OF LOWEST CONDUCTOR OVER R.R. TRACKS	R.R. SIGNAL WIRE
A-B	160'	#0B	30" (final sag 37.6")	34'4"	12 1/2" OVER GATE 8'4"
F-E	113'	#350B	9"	40.2'	18.2' "12.6"

APPROVED E. A. HANSEN GENERAL ENGINEERING DEPT. DATE 3-30-06  
DESIGNED BY E. L. REBERG OVERHEAD LINES DEPT. DETROIT  
REV'D - M. C. ... CHKD - D. S. ... 2/5/70

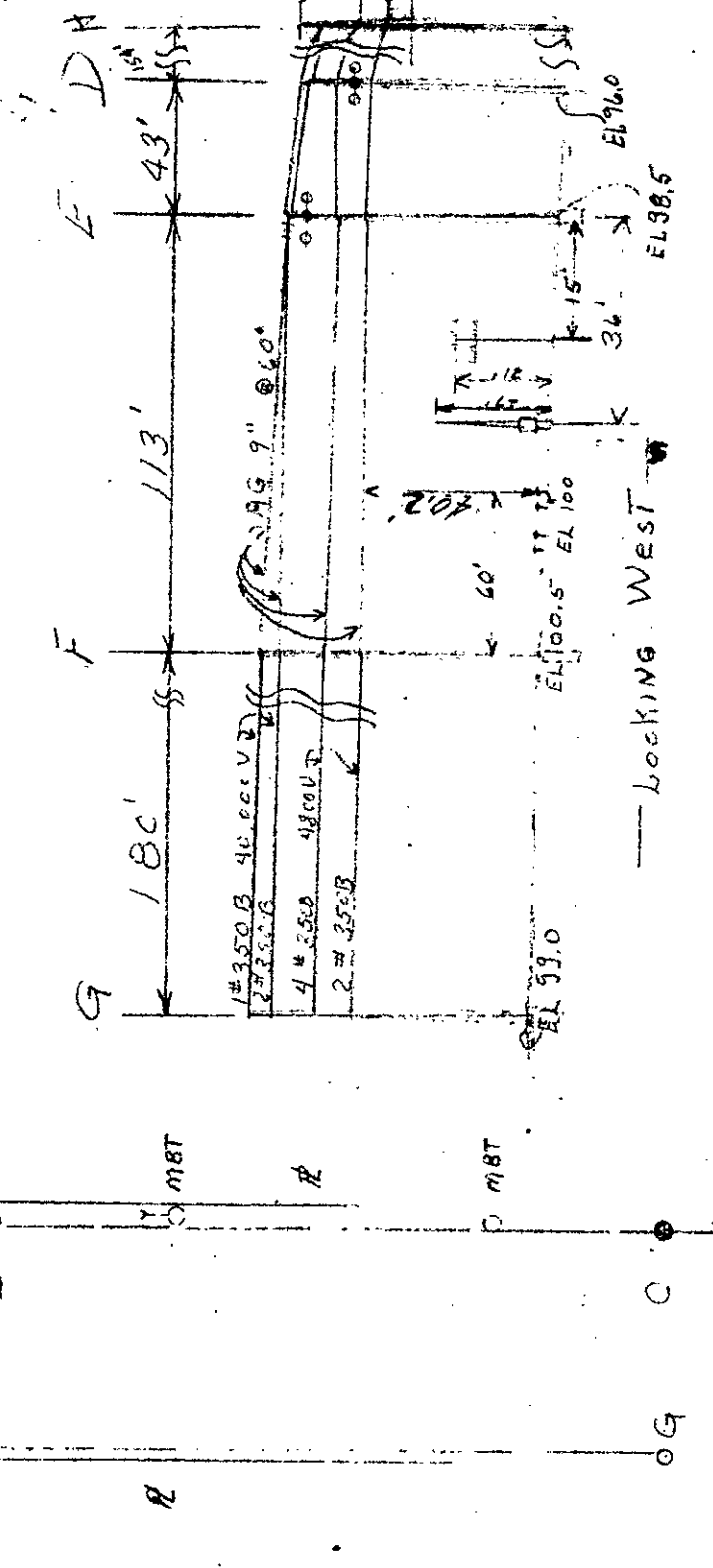
PROPOSED #350B 40,000V  
#350B 4,800V



(GATE & TRACK EL 100')



POLE	VOLTAGE	DETAIL	TOP OR POLE	IN 2 LOWEST WIRE
E	4000	828	11.4'	
F	4000	842	8.9'	



Received from  
A. H. ...  
of ...  
a ...  
...

Had in ...  
...

RECORDED RIGHT OF WAY NO. 32887

PL 3955-B

PROPOSED LINE CROSSING OVER PENN CENTRAL RAILROAD EXISTING PERMIT NUMBER EDZ-B-6206  
IN GULLEY ROAD, APPROX. 275' SOUTH OF TROWBRIDGE CITY OF DEARBORN  
SECTION N.W. 29 TOWNSHIP \_\_\_\_\_ T 25 R 10E COUNTY WAYNE

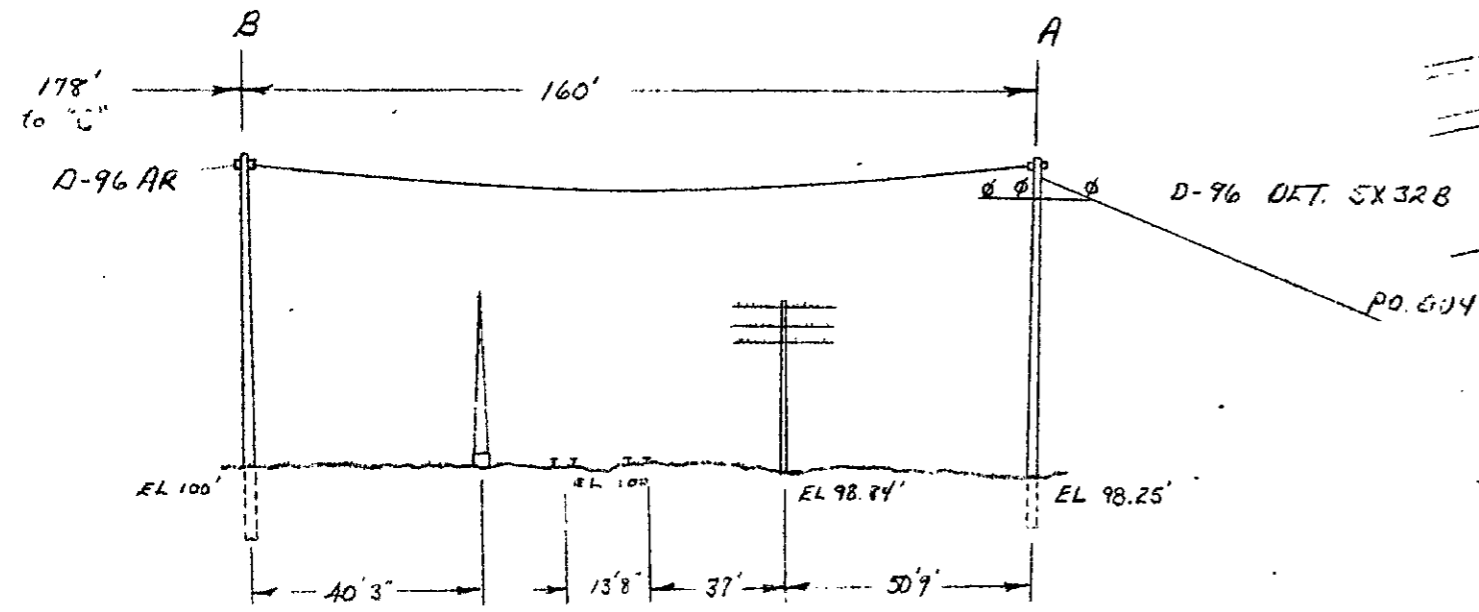
NOTES	CONDUCTORS				POLES			
	NUMBER	SIZE	KIND	VOLTAGE	LOCATION	LENGTH	CLASS	TYPE
<p>MATERIALS SHALL BE AS NOTED IN THE DETROIT EDISON COMPANY'S GENERAL SPECIFICATIONS FOR OVERHEAD LINE CONSTRUCTION AT RAILROAD CROSSINGS DATED MARCH 1955.</p> <p>ACTUAL FIELD DIMENSIONS MAY VARY SOMEWHAT FROM THOSE SHOWN BUT THE REQUIREMENTS OF ORDER NO. 1679 OF MICHIGAN PUBLIC SERVICE COMMISSION AS REVISED JAN. 1, 1944, WILL BE COMPLIED WITH</p> <p>MINIMUM CLEARANCES</p> <p>NEAREST POLE TO RAIL SIDING 7 FT MAIN LINE 12 FT</p> <p>WIRES OVER TRACKS 0-750 VOLTS 27 FT 750-15,000 VOLTS 28 FT 15,000-50,000 VOLTS 30 FT</p> <p>WIRES OVER R R SIGNAL 0-750 VOLTS 2 FT 750-8,700 VOLTS 4 FT 8,700-50,000 VOLTS 6 FT</p>	SPAN	EF	A	45	1	Wood		
	PROPOSED		B	45	4	"		
	2 # 5/16" EHS GUYS	C	45	3	"			
	6 # 350 B 4,800V	D	50	1	"			
		E	55	1	"			
	SPAN - 13A	F	60	1	"			
	H	45	1	"				
	3 # 0 B 4,800V							

APPROVED E.A. HANSEN GENERAL ENGINEERING DEPT. DATE 3-30-68  
DESIGNED BY E.L. REHBERG OVERHEAD LINES DEPT. DETROIT

SPAN	SPAN LENGTH	LOWEST CONDUCTOR OVER R.R. TRACKS	STRINGING SAG AT 60°F	HEIGHT OF LOWEST CONDUCTOR OVER	
				R.R. TRACKS	R.R. SIGNAL WIRE
A-B	160'	#0B	30" (Final sag 37.6")	34' 4"	121" Over Gate 8' 4"
F-E	113'	#350B	9"	36.5'	13.2' " 7.8'

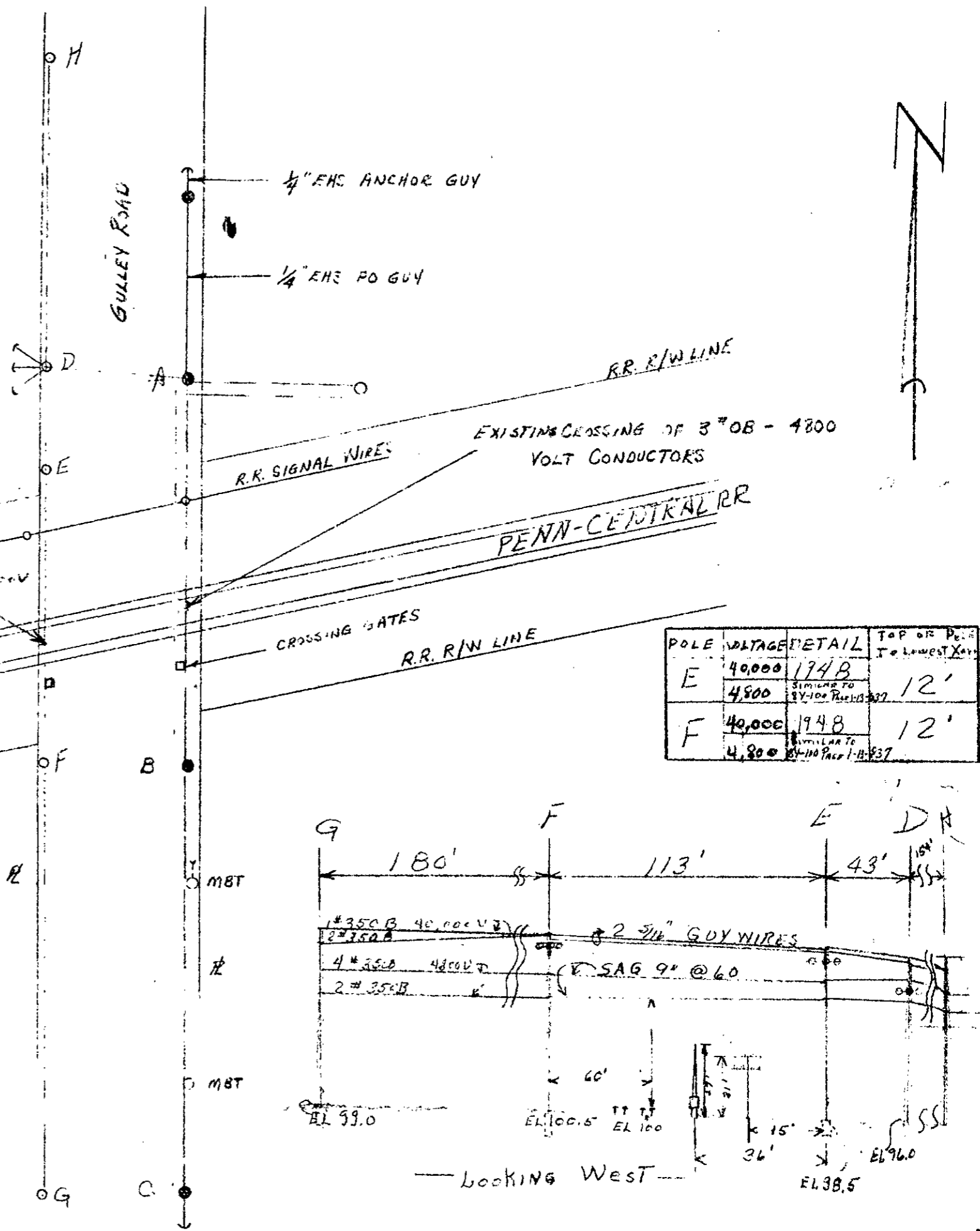
REVA - M. Cronin CHK'D - D. St. Kie Dept 3/17/70

ELEVATION LOOKING WEST

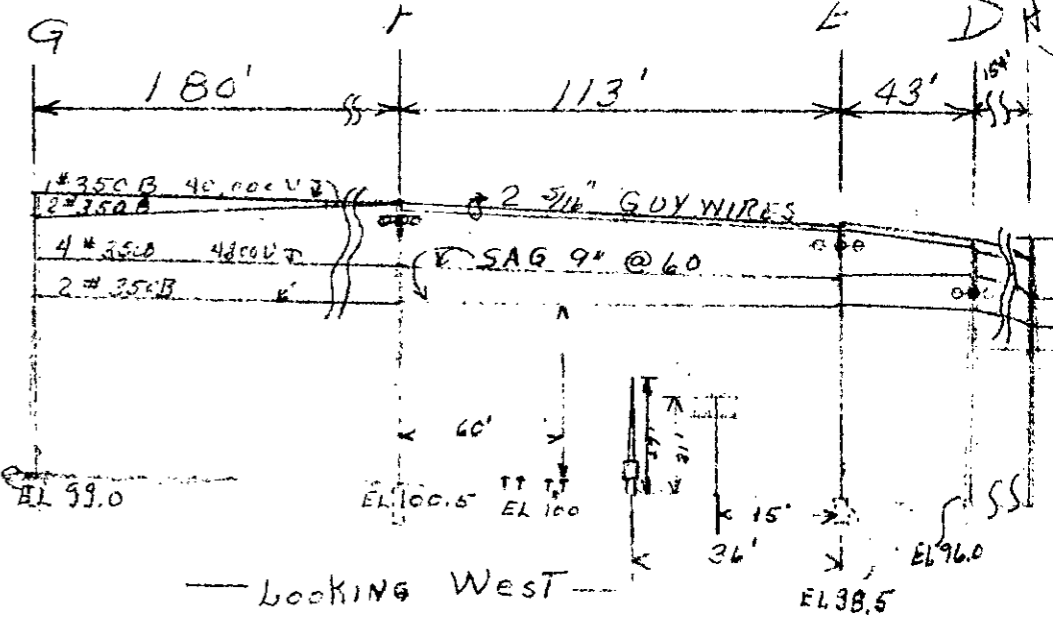


(GATE & TRACK EL 100')

PROPOSED 6 # 350 B 4,800V



POLE	VOLTAGE	DETAIL	TOP OR POLE TO LOWEST XING
E	40,000 4,800	174B SIMILAR TO 89-100 P. 1-B-937	12'
F	40,000 4,800	194B SIMILAR TO 89-100 P. 1-B-937	12'



Looking West

RECORDED RIGHT OF WAY NO. 32887