

APARTMENTS MEADOWBRIDGE CONDOMINIUM PHASE II

AGREEMENT - EASEMENT - RESTRICTIONS

This instrument made this 3rd day of May, 1977, by and between the undersigned Owners and THE DETROIT EDISON COMPANY, a corporation organized and existing concurrently under the laws of the states of Michigan and New York, of 2000 Second Avenue, Detroit, Michigan, 48226, hereinafter called "EDISON", and MICHIGAN BELL TELEPHONE COMPANY, a Michigan corporation, of 1365 Cass Avenue, Detroit, Michigan, 48226, hereinafter called "BELL."

W I T N E S S E T H :

WHEREAS, Owners are erecting apartments known as Meadowbridge Condominium Phase II, on land in the Township of Clinton, County of Macomb, State of Michigan, as described in Appendix "A", attached hereto and made a part hereof, and EDISON and BELL will install their electric and communication facilities underground except necessary above ground equipment.

NOW, THEREFORE, in consideration of the mutual promises and covenants for the installation of underground utility service made by the parties hereto, it is hereby agreed:

(1) The installation, ownership and maintenance of electric services and the charges to be made therefor shall be subject to and in accordance with the Orders and Rules and Regulations adopted from time to time by the Michigan Public Service Commission.

(2) Owners must certify to EDISON and BELL that the easements are graded to within four (4") inches of final grade before the underground facilities are installed.

(3) Owners further agree that if subsequent to the installation of the utility facilities of EDISON and BELL, it is necessary to repair, move, modify, rearrange or relocate any of their facilities to conform to a new plot plan or change of grade or for any cause or changes attributable to public authority having jurisdiction or to Owners action or request, Owners will pay the cost and expense of repairing, moving, rearrangement or relocating said facilities to EDISON or BELL upon receipt of a statement therefor. Further, if the lines or facilities of EDISON and BELL are damaged by acts of negligence on the part of the Owners or by contractors engaged by Owners, repairs shall be made by the utilities named herein at the cost and expense of the Owners and shall be paid to EDISON or BELL upon receiving a statement therefor. Owners are defined as those persons owning the land at the time damage occurred.

(4) Owners hereby grant to EDISON and BELL easement for electric and communication underground services in land herein described. When utility lines are installed, this instrument shall be re-recorded with an "as installed" drawing showing the location of utility facilities in relation to building lines and indicating the easements by their centerlines. Easements herein granted shall be six (6') feet in width unless otherwise indicated on said drawing. However, secondary electric service and communication entrance line locations, as shown on an installed drawing are not guaranteed; actual locations can be determined after contact with utilities.

(5) Owners to pay the cost of conduit for electric and/or communication facilities to accomodate patios or similar site conditions.

(6) Easements herein granted are subject to the following restrictions and additional conditions:

"This easement is re-recorded for the purpose of showing the planned "as installed" centerlines of easement granted as shown on drawing attached hereto." a. Said easements shall be subject to Order of and the Rules and Regulations adopted from time to time by the Michigan Public Service Commission.

-1-

RECORDED IN MACOMB COUNTY RECORDS AT: 9:15A M.

JUN - 3 1977

Edna Hull CLERK - REGISTER OF DEEDS MACOMB COUNTY, MICHIGAN

RETURN TO

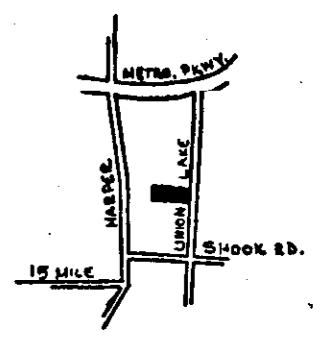
DAVID R. WINFIELD THE DETROIT EDISON COMPANY 76 S. GRATIOT MT. CLEMENS, MICHIGAN 48043

RECORDED RIGHT OF WAY NO. 31771

17D



LOCATION SKETCH  
U. G. MAP SEC. NOS. CLN-88



LIBER 2910 PAGE 71

LIBER 2910 PAGE 72

LIBER 2910 PAGE 73

TRANSFORMER SPECS.  
PEDESTAL SPEC.-R13  
NO. OF PEDESTALS NONE 2

- CODE -

- ⊙ TEMPORARY SECONDARY PEDESTAL
- ⊠ DFT (DEAD FRONT TYPE)
- ⊡ UOT (NON-SWITCHING-LIVE FRONT TYPE)
- ⊞ UOT (SWITCHING-LIVE FRONT TYPE)
- ← DIRECTION OF TRANSFORMER DOOR OPENING
- SECONDARY PEDESTAL
- △ SECONDARY TERMINAL
- ⊙ CABLE POLE
- PRIMARY SWITCH CABINET
- BURIED PRIMARY CABLE-ALL VOLTAGES
- BURIED SECONDARY CABLE
- BURIED SECONDARY SERVICE CABLE
- DETROIT EDISON TRENCH ONLY
- TELEPHONE TRENCH ONLY
- SEWER
- WATER
- GAS
- PROPOSED CONDUIT

CABLE SUMMARY

ITEM#	DESCRIPTION	STEP-1	STEP-2
AP2-350M	#2APEC X 1 13.2 KV	910	1583
AP2-350M	AP2-350M & 1-4/0 800 V.	NONE	NONE
AP2-350M	AP2-350M 1-4/0 800 V.	670	1689
		662'	

TRENCH SUMMARY

JOINT USE	951	1709
D. E. ONLY	25	229
TEL ONLY	11	NONE
TOTAL	987	1938

SITE SUPT. T. WILBERDING  
PHONE NO. 574-0980

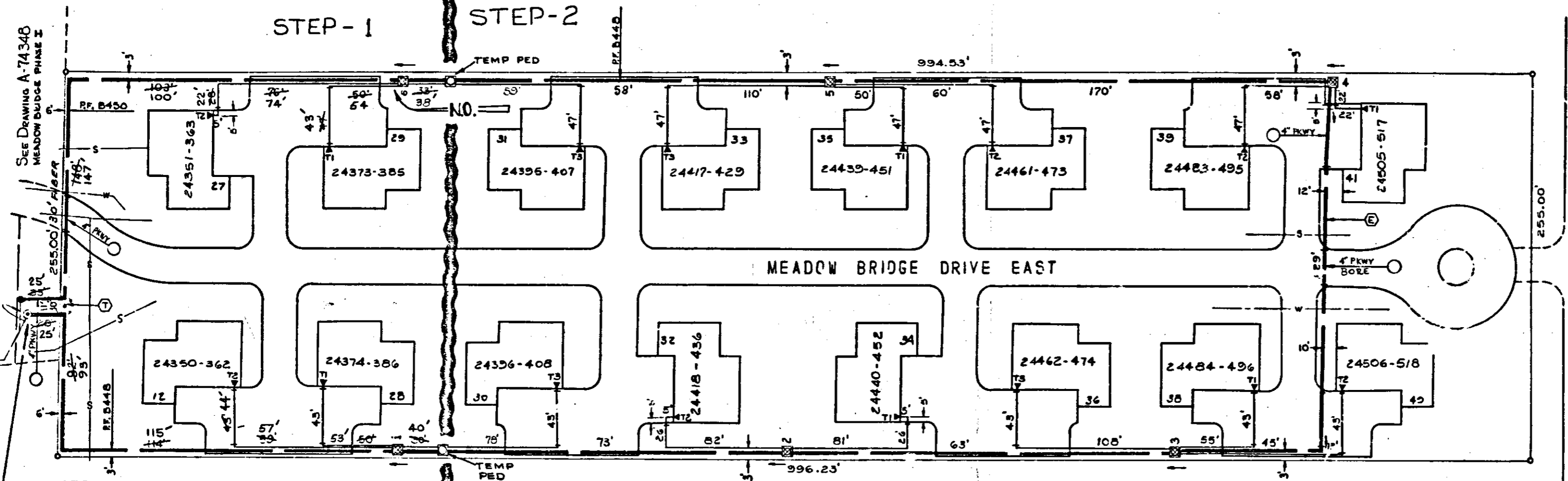
- GENERAL NOTES -

TRENCHING TO BE DONE BY \_\_\_\_\_  
TRENCH AND CABLE LENGTHS ARE APPROXIMATE.  
SEE DRAWING UI-2368 FOR TRANS. MAT. DETAILS.  
SEE PAGE 3-2-11 (S.I.M.) DETAIL " " FOR ENTRANCE POINT DETAILS (APTS. ONLY)  
SEE DRAWING UI-4-2283 FOR PLACEMENT OF CABLES, TRANSFORMERS AND PEDESTALS (SUBS ONLY).  
D.E. SERVICE PLANNER E. Miles 465-6201 X-267  
TEL. CO. L. GENO 777-9950

CONTACT "MISS DIG" (647-344) BEFORE DOING ANY EXCAVATION.  
EASEMENTS INDICATED BY OUR CENTERLINES ARE (6') SIX FEET IN WIDTH UNLESS OTHERWISE NOTED.

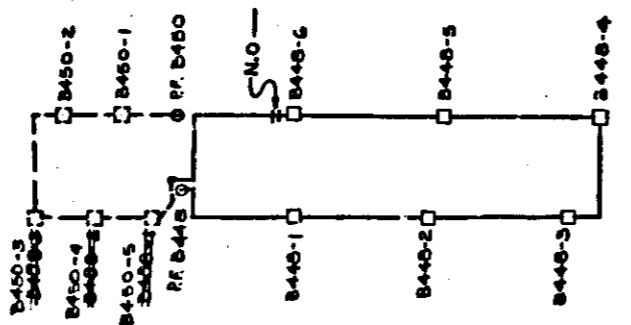
PERMITS REQUIRED

Notification, Clinton Township & PERMIT TO DRAIN COMMISSION



- NOTE 1:  
1. EXTEND NEW PRI. CABLE UP POLE & TO...  
2. REMOVE EXISTING CABLE ON POLE & SPLICE 10' N. OF POLE.  
3. CLOSE N.O. AT TRANSFORMER B448-2 & REESTABLISH N.O. AT TRANS. B448-6.

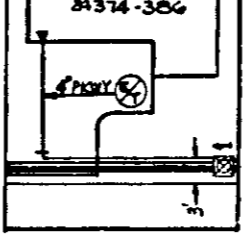
SKETCH FOR RETAGGING



STEP 1

DO A-74406  
WO 86789J104  
START 8-16-77  
FINISH 8-17-77  
TECH. R. OSBORNE  
LABOR UNION EXC.  
SPlicing DE.CO.  
SUPPLY. T. DAVIS  
RECORDS L. GIARDINI

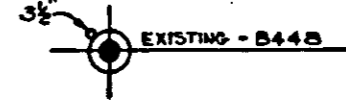
TYPICAL



D.E. & M.B.T. ARE IN SAME TRENCH, ALSO IN SAME CONDUIT UNLESS OTHERWISE NOTED

TRANSFORMER DATA

STEP	U.D.T. NO.	SIZE	ED. STK. NO.
STEP-1	B448-1	50	661-1192
STEP-2	-2		
STEP-2	-3		
STEP-2	-4		
STEP-2	-5		
STEP-2	-6		



"As-Installed"

D	C	B	A	REFERENCE	NAME	DATE	JOB TITLE	THE DETROIT EDISON COMPANY
	REVISED TO SHOW AS INSTALLED IN FIELD	REVISED TO SHOW STEP-2	REVISED TO SHOW STEP-1		JOE M. JINDA	APR 20, 77	DIRECT BURIED SYSTEM - URD	SERVICE PLANNING DEPARTMENT
					C. MILLER	4-22-77		SCALE 1" = 40'
					R. B. HARRIS	4-22-77		NUMBER OF UNITS: STEP-1 16, STEP-2 48
					R. A. HARRIS			WORK ORDER NUMBER: 36789J104
								LATEST REVISION: BC
								2515 HARPER 13.2KV ISO-UP
								DEPT. ORDER NUMBER: STEP-1 77A-74406, STEP-2 77A-74522
								SHEET 1 OF 1 SHEETS

MEADOW BRIDGE CONDOMINIUM PHASE II  
BEING LOTS 19, 20, 21 UNION LAKE SUB. PART OF PRIVATE CLAIM 173  
CLINTON TOWNSHIP — MACOMB COUNTY

11.23.11

ST 1001 0108

ST 1001 0108

ST 1001 0108

31771

RECORDED RIGHT OF WAY NO. 31771

RETURN TO  
DAVID R. WINFIELD  
THE DELCOIT EDISON COMPANY  
76 S. GRATIOT  
MT. CLEMENS, MICHIGAN 48043