

USEFF 867 PAGE 031

APARTMENTS

AGREEMENT - EASEMENT - RESTRICTIONS

This instrument made this 13th day of April, 19 78, by and between the undersigned Owners and THE DETROIT EDISON COMPANY, a corporation organized and existing concurrently under the laws of the states of Michigan and New York, of 2000 Second Avenue, Detroit, Michigan, 48226, hereinafter called "EDISON", and MICHIGAN BELL TELEPHONE COMPANY, a Michigan corporation, of 1365 Cass Avenue, Detroit, Michigan, 48226, hereinafter called "BELL."

W I T N E S S E T H :

WHEREAS, Owners are erecting apartments known as Wallace Apartments #3, on land in the Township of Handy, County of Livingston, State of Michigan, as described in Appendix "A", attached hereto and made a part hereof, and EDISON and BELL will install their electric and communication facilities underground except necessary above ground equipment.

NOW, THEREFORE, in consideration of the mutual promises and covenants for the installation of underground utility service made by the parties hereto, it is hereby agreed:

(1) The installation, ownership and maintenance of electric services and the charges to be made therefor shall be subject to and in accordance with the Orders and Rules and Regulations adopted from time to time by the Michigan Public Service Commission.

(2) Owners must certify to EDISON and BELL that the easements are graded to within four (4") inches of final grade before the underground facilities are installed.

(3) Owners further agree that if subsequent to the installation of the utility facilities of EDISON and BELL, it is necessary to repair, move, modify, rearrange or relocate any of their facilities to conform to a new plot plan or change of grade or for any cause or changes attributable to public authority having jurisdiction or to Owners action or request, Owners will pay the cost and expense of repairing, moving, rearrangement or relocating said facilities to EDISON or BELL upon receipt of a statement therefor. Further, if the lines or facilities of EDISON and BELL are damaged by acts of negligence on the part of the Owners or by contractors engaged by Owners, repairs shall be made by the utilities named herein at the cost and expense of the Owners and shall be paid to EDISON or BELL upon receiving a statement therefor. Owners are defined as those persons owning the land at the time damage occurred.

(4) Owners hereby grant to EDISON and BELL easement for electric and communication underground services in land herein described. When utility lines are installed, this instrument shall be recorded with an "as installed" drawing showing the location of utility facilities in relation to building lines and indicating the easements by their centerlines. Easements herein granted shall be six (6') feet in width unless otherwise indicated on said drawing. However, secondary electric service and communication entrance line locations, as shown on an installed drawing are not guaranteed; actual locations can be determined after contact with utilities.

(5) Owners to pay the cost of conduit for electric and/or communication facilities to accomodate patios or similar site conditions.

(6) Easements herein granted are subject to the following restrictions and additional conditions:

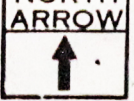
- a. Said easements shall be subject to Order of and the Rules and Regulations adopted from time to time by the Michigan Public Service Commission.

RECORDED RECORD OF DEED NO. 31629

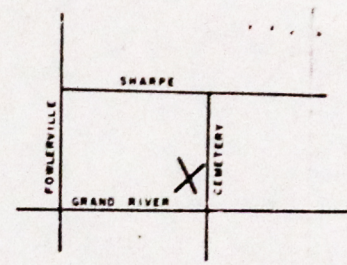
JAN 8 3 06 PM '78  
NANCY HAY  
REGISTER OF  
LIVINGSTON CO. MI

RECORDED

LIBER 867 PAGE 035



LOCATION SKETCH



Page 1-17-261  
Page 1-56-101A

TRANSFORMER SPEC. \_\_\_\_\_  
PEDESTAL SPEC. - R13  
NO. OF PEDESTALS \_\_\_\_\_

- CODE -

- ⊙ TEMPORARY SECONDARY PEDESTAL
- ⊙ DFT (DEAD FRONT TYPE)
- ⊙ UDT (NON SWITCHING-LIVE FRONT TYPE)
- ⊙ UDT (SWITCHING-LIVE FRONT TYPE)
- ← DIRECTION OF TRANSFORMER DOOR OPENING
- SECONDARY PEDESTAL
- ▲ SECONDARY TERMINAL
- ⊙ CABLE POLE
- PRIMARY SWITCH CABINET
- BURIED PRIMARY CABLE-ALL VOLTAGES
- BURIED SECONDARY CABLE
- BURIED SECONDARY SERVICE CABLE
- DETROIT EDISON TRENCH ONLY
- TELEPHONE TRENCH ONLY
- SEWER
- WATER
- GAS
- PROPOSED CONDUIT

Legend

- ⊙ D. E. Man Trench
- ⊙ D. E. Service Trench
- Primary Cable Length
- Secondary Cable Length
- Service Cable Length
- Telephone Trench

Title Block

W. O. \_\_\_\_\_  
 E. O. \_\_\_\_\_  
 P. O. \_\_\_\_\_  
 Start \_\_\_\_\_  
 Comm. \_\_\_\_\_  
 Date \_\_\_\_\_  
 Forman \_\_\_\_\_  
 Contractor \_\_\_\_\_  
 Trench \_\_\_\_\_  
 Meter \_\_\_\_\_  
 Filter \_\_\_\_\_

CABLE SUMMARY

#2X1LPE x 1 13.2 KV 713-3062 = 820'  
 AP2 350M & 14/0 600 V. 713-0537 =  
 AP2 2/0 & 1#1 600 V. 713-0614 =

TRENCH SUMMARY

JOINT USE \_\_\_\_\_  
 D. E. ONLY \_\_\_\_\_  
 TEL ONLY \_\_\_\_\_  
 TOTAL \_\_\_\_\_

SITE SUPT. Lony Wallace  
 PHONE NO. (517) 223-9636

- GENERAL NOTES -

TRENCHING TO BE DONE BY Detroit Edison  
 TRENCH AND CABLE LENGTHS ARE APPROXIMATE.  
 SEE DRAWING UI-12369 FOR TRANS. MAT. DETAILS.  
 SEE PAGE 3-211 (S.I.M.) DETAIL " " FOR ENTRANCE  
 POINT DETAILS (APTS ONLY)  
 SEE DRAWING UI-42263 FOR PLACEMENT OF CABLES,  
 TRANSFORMERS AND PEDESTALS (SUBDS ONLY).  
 D.E. SERVICE PLANNER Clyde Crain (517) 546-5440 Ext 755  
 TEL. CO. Robert Trondson (517) 546-9963  
 M B T Co Job No. \_\_\_\_\_

EASEMENTS INDICATED BY OUR CENTERLINES ARE (8')  
 SIX FEET IN WIDTH UNLESS OTHERWISE NOTED.  
 FIFTEEN FOOT EASEMENT AT S. SOUTH OF TRANSFORMER K048-1

PERMITS REQUIRED

HANDY TWP (NOTIFICATION ONLY)

EST. START DATE: 4-15-78

THE DETROIT EDISON COMPANY

SERVICE PLANNING DEPARTMENT  
 SCALE 1" = 100'  
 NUMBER OF UNITS 1  
 WORK ORDER NUMBER 367B6J63

LATEST REVISION  
 DISTRIBUTION CIRCUIT  
 301 FOWLerville 13.2K

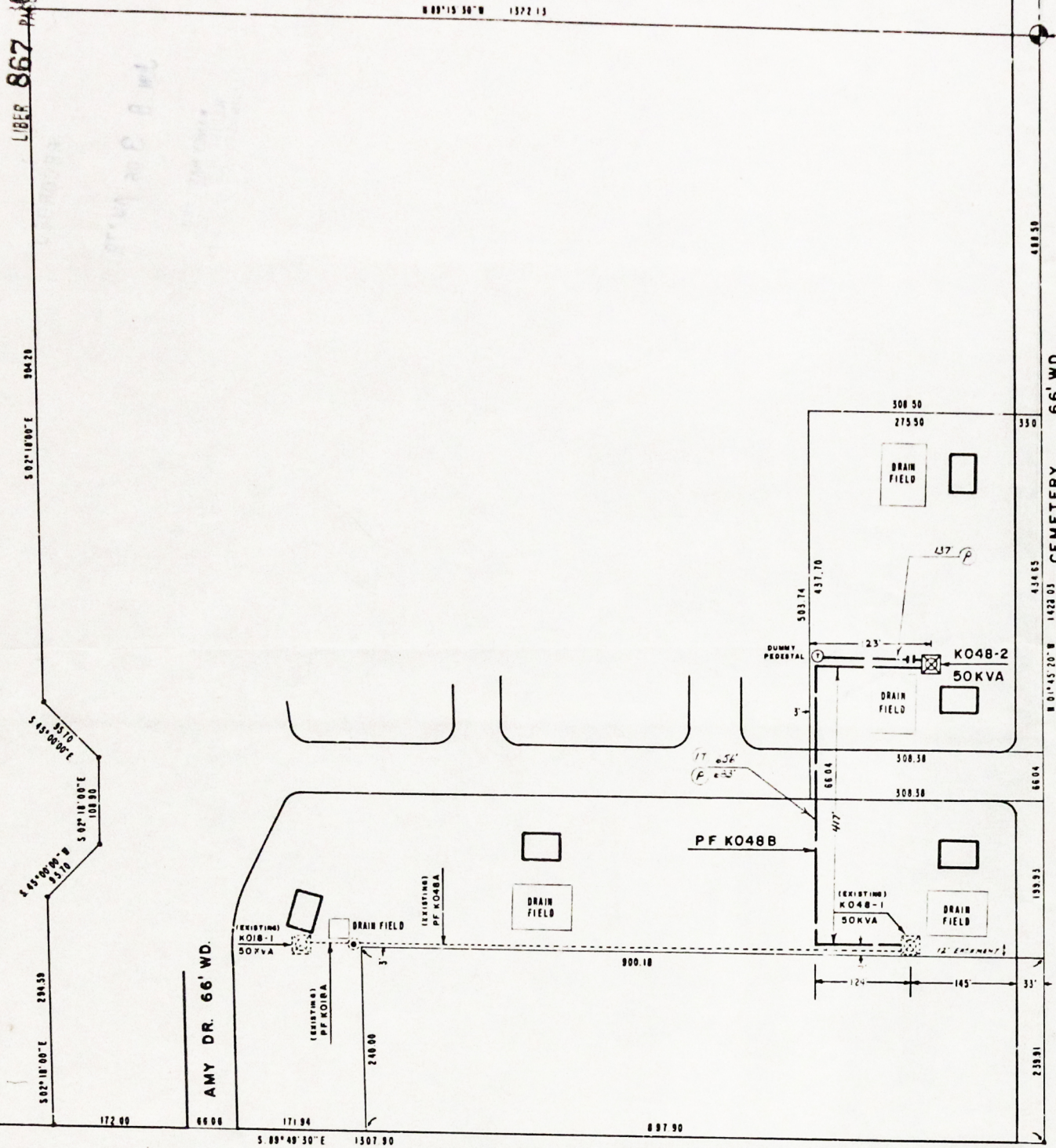
DEPT. ORDER NUMBER A-49790  
 SHEET 1 OF 1

**NOTICE**  
 Locations of underground facilities on this drawing are only approximate. Exact locations must be determined by the UTILITY COMPANIES. For exact locations, telephone MISS DIG on 800-482-7171 as required by Public Act 53 of 1974 before doing any power excavating.

31629  
 RECORDED RIGHT OF WAY

TRANSFORMER DATA

U.D.T. NO.	SIZE	ED. STK. NO.
K048-2	50 KVA	661-1152



GRAND RIVER AVE. 100' WD.

AMY DR. 66' WD.

CEMETERY 66' WD.

REVISION	DATE	BY	CHECKED BY	APPROVED BY
C				
B				
A				

REFERENCE  
 URD Oper. Map HDY-3  
 U-38175 (Step II)

NAME	DATE	JOB TITLE
Don Blake	3-14-78	
Clyde Crain	4-3-78	
W. Trondson	4-3-78	

WALLACE APARTMENTS - Step III  
 PART OF THE S.E. 1/4

SECTION II  
 T.3N.-R.3E.  
 HANDY TWP LIVINGSTON CO.

DEPT. ORDER NUMBER	WORK ORDER NUMBER
A-49790	367B6J63