

AGREEMENT - RESTRICTIONS

This instrument made this 7th day of JULY, 1977, by and between the undersigned Owners and THE DETROIT EDISON COMPANY, a corporation organized and existing concurrently under the laws of the States of Michigan and New York, of 2000 Second Avenue, Detroit, Michigan, 48226, hereinafter referred to as "EDISON" and MICHIGAN BELL TELEPHONE COMPANY, a Michigan corporation of 1365 Cass Avenue, Detroit, Michigan, 48226, hereinafter referred to as "BELL".

W I T N E S S E T H :

A parcel of land has been subdivided in the _____ City _____ of _____ Sterling Heights _____, _____ Macomb _____ County, State of Michigan, described as:

LONDON HEIGHTS SUBDIVISION, of part of the North 1/2 of Section 14, T.2.N., R.12.E., City of Sterling Heights, Macomb County, Michigan as recorded in Liber 69 of Plats, Pages 5, 6 and 7, Macomb County Records.

And, WHEREAS EDISON and BELL will install their electric and communication facilities underground, except necessary above ground equipment.

NOW, THEREFORE, in consideration of the mutual promises and covenants for the installation of said underground utility services made by the parties hereto, it is hereby agreed:

- (1) The installation, ownership and maintenance of electric services and the charges to be made therefor shall be subject to and in accordance with the Orders and Rules and Regulations adopted from time to time by the Michigan Public Service Commission.
- (2) In addition to the easements set forth in the plat, owners agree to grant by separate instrument, additional easements deemed necessary for electric and communication utilities.
- (3) Owners will place survey stakes indicating property lot lines before trenching.
- (4) Where, sewer lines will parallel electric and communication lines, sewer taps must be extended into each lot for a distance of one (1') foot beyond the easement limits. Underground sewer and water lines may cross but shall not be installed parallel within the six (6') foot easements used for electric and communication facilities.
- (5) Owners must certify to EDISON and BELL that the easements are graded to within four (4") inches of final grade before the underground facilities are installed.

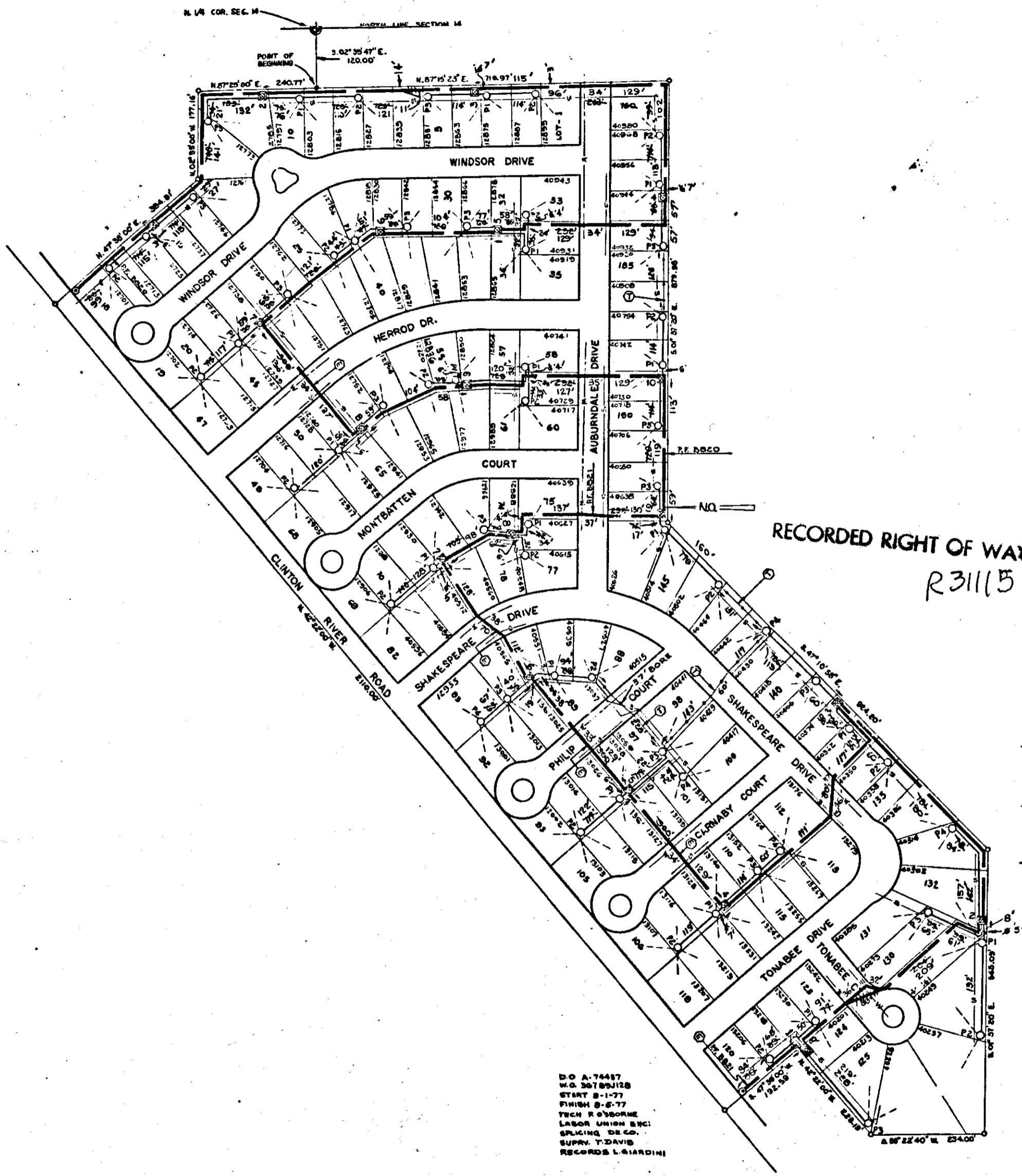
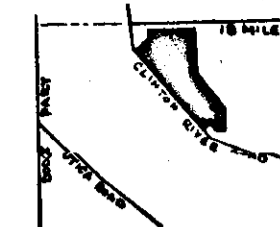
RECORDED RIGHT OF WAY NO. 3115

RECORDED IN MACOMB COUNTY
RECORDS AT: 3:00 P M
AUG - 1 1977

Edna H. Hill
CLERK - REGISTER OF DEEDS
MACOMB COUNTY, MICHIGAN

DRAFTED BY: AND RETURN TO:
MELFORD HARTMAN
MICHIGAN BELL TELEPHONE CO.
20811 KELLY RD. RM. L-1
EAST DETROIT, MICHIGAN 48021

9

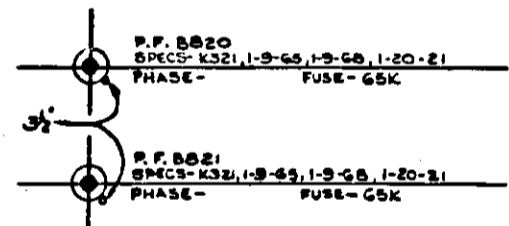


TRANSFORMER DATA

U.D.T. NO.	SIZE	ED. STK. NO.
8820 - 1	25	661 - 1181
- 2		
- 3	50	- 1182
- 4		
- 5		
- 6		
- 7		
- 8		
- 9		
- 10		
8821 - 1	50	661 - 1182
- 2		
- 3		
- 4		
- 5		
- 6	25	- 1181
- 7		
- 8	50	- 1182
- 9		

TRANSFORMER SPEC. _____
 PEDESTAL SPEC. - R13
 NO. OF PEDESTALS 62

- CODE -
- ⊙ TEMPORARY SECONDARY PEDESTAL
 - ⊠ DFT (DEAD FRONT TYPE)
 - ⊡ UDT (NON-SWITCHING-LIVE FRONT TYPE)
 - ⊞ UDT (SWITCHING-LIVE FRONT TYPE)
 - ← DIRECTION OF TRANSFORMER DOOR OPENING
 - SECONDARY PEDESTAL
 - △ SECONDARY TERMINAL
 - ⊙ CABLE POLE
 - ⊞ PRIMARY SWITCH CABINET
 - BURIED PRIMARY CABLE-ALL VOLTAGES
 - BURIED SECONDARY CABLE
 - BURIED SECONDARY SERVICE CABLE
 - DETROIT EDISON TRENCH ONLY
 - TELEPHONE TRENCH ONLY
 - SEWER
 - WATER
 - GAS
 - PROPOSED CONDUIT



TRENCH NOTE
 ALL D.E. CO. & M.B.T. LINES ARE 3 FEET OFF
 ALL PERIMETERS LINES, AND SEWER LEADS
 ARE AT 6 FEET.

5% Added

ITEM	QUANTITY	UNIT	PRICE	TOTAL
2APEC X 1 132 KV	713-3028		7568	7568
AP2-350M & 1-40 800 V.	713-0537		6494	6494
AP2-20 & 1-01 800 V.	713-0514		6003	6003

ITEM	QUANTITY	UNIT	PRICE	TOTAL
JOINT USE	8643		7857	7857
D. E. ONLY	1296		1144	1144
TEL ONLY	529		732	732
TOTAL	10468		9733	9733

SITE SUPT. Mr. Diamond
 PHONE NO. 465-6232

- GENERAL NOTES -
- TRENCHING TO BE DONE BY D.E. CO.
 - TRENCH AND CABLE LENGTHS ARE APPROXIMATE. SEE DRAWING UH-1-2369 FOR TRANS. MAT. DETAILS. SEE PAGE 3-2-11 (S.I.M.) DETAILS FOR ENTRANCE POINT DETAILS (PARTS ONLY).
 - SEE DRAWING UH-4-2263 FOR PLACEMENT OF CABLES, TRANSFORMERS AND PEDESTALS (SUBDS ONLY).
 - D.E. SERVICE PLANNER: R. DUNN 465-6201 X-244
 - TEL. CO.: D. De Rose 463-3065

CONTACT "MISS DIG" (6477-344) BEFORE DOING ANY EXCAVATION.
 EASEMENTS INDICATED BY OUR CENTERLINES ARE 6' SIX FEET IN WIDTH UNLESS OTHERWISE NOTED.

PERMITS REQUIRED
 Non-Platting, City of Sterling Heights

DO A-74457
 W.O. 30789128
 START 8-11-77
 FINISH 8-6-77
 TECH R. S. BORME
 LABOR UNION BNCI
 SPlicing DECO.
 SUPPLY T. DAVIS
 RECORDS L. GARDINI

REVISION	DATE	BY	DESCRIPTION
D			
C			
B			
A			REVISED TO SHOW AS BUILT

NO.	DATE	BY	DESCRIPTION
1	5-26-77	J. MARTINEZ	DRAWN BY
2	5-31-77	P. DU PON	CHECKED BY
3	6-2-77	Richmond	APPROVED BY
4	6-2-77	J. A. HOPKIN	APPROVED BY

THE DETROIT EDISON COMPANY	WORK ORDER NUMBER
SERVICE PLANNING DEPARTMENT	367 898 128
SCALE 1" = 100'	DISTRIBUTION CIRCUIT
LATEST REVISION A	8409 MACOMB 13.2KV
DEPT. ORDER NUMBER 77A-74437	SHEET 1 OF 1

P31115

RECORDED BY UNIT NO. 3445