

THIS INSTRUMENT IS RE-RECORDED WITH "AS INSTALLED" DRAWING AS STIPULATED IN PARAGRAPH 4:

AGREEMENT - EASEMENT - RESTRICTIONS

This instrument made this 12th day of NOVEMBER, 1976, by and between the undersigned Owners and THE DETROIT EDISON COMPANY, a corporation organized and existing concurrently under the laws of the states of Michigan and New York, of 2000 Second Avenue, Detroit, Michigan, 48226, hereinafter called "EDISON", and MICHIGAN BELL TELEPHONE COMPANY, a Michigan Corporation, of 1365 Cass Avenue, Detroit, Michigan, 48226, hereinafter called "BELL".

WITNESSETH:

WHEREAS, Owners are erecting apartments known as Block Apartments aka Bentley Square, on land in the city of Garden City, County of Wayne, State of Michigan, as described in Appendix "A", attached hereto and made a part hereof, and EDISON and BELL will install their electric and communication facilities underground except necessary above ground equipment.

NOW, THEREFORE, in consideration of the mutual promises and covenants for the installation of underground utility service made by the parties hereto, it is hereby agreed:

- (1) The installation, ownership and maintenance of electric services and the charges to be made therefor shall be subject to and in accordance with the Orders and Rules and Regulations adopted from time to time by the Michigan Public Service Commission.
- (2) Owners must certify to EDISON and BELL that the easements are graded to within four (4") inches of final grade before the underground facilities are installed.
- (3) Owners further agree that if subsequent to the installation of the utility facilities of EDISON and BELL, it is necessary to repair, move, modify, rearrange or relocate any of their facilities to conform to a new plot plan or change of grade or for any cause or changes attributable to public authority having jurisdiction or to Owners action or request, Owners will pay the cost and expense of repairing, moving, rearrangement or relocating said facilities to EDISON and BELL upon receipt of a statement therefor. Further, if the lines or facilities of EDISON and BELL are damaged by acts of negligence on the part of the Owners or by contractors engaged by Owners, repairs shall be made by the utilities named herein at the cost and expense of the Owners and shall be paid to EDISON or BELL upon receiving a statement therefor. Owners are defined as those persons owning the land at the time damage occurred.
- (4) Owners hereby grant to EDISON and BELL easement for electric and communication underground services in land herein described. When utility lines are installed, this instrument shall be re-recorded with an "as installed" drawing showing the location of utility facilities in relation to building lines and indicating the easements by their centerlines. Easements herein granted shall be six (6') feet in width unless otherwise indicated on said drawing. However, secondary electric service and communication entrance line locations, as shown on an "as installed" drawing are not guaranteed; actual locations can be determined after contact with utilities.
- (5) Owners to pay the cost of conduit for electric and/or communication facilities to accommodate patios or similar site conditions.
- (6) Easements herein granted are subject to the following restrictions and additional conditions:
  - a. Said easements shall be subject to Orders of and the Rules and Regulations adopted from time to time by the Michigan Public Service Commission.
  - b. Owners will place survey stakes indicating building plot lines and property lines before trenching.

RECORDED

G154087  
G510017

RECORDED  
DATE NO  
30728

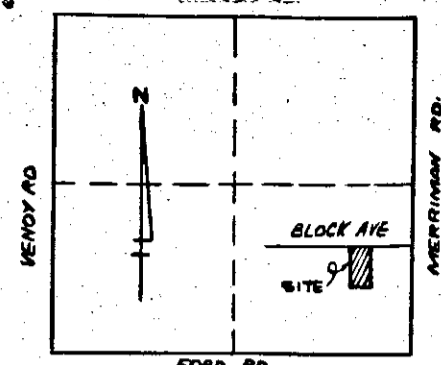
RECORDED JUN 17 1980 BY 346 P  
REST E. YOUNGBLOOD, Register of Deeds  
WAYNE COUNTY, MICHIGAN 48226

DRAFTED BY AND RETURN TO:  
M. HARTMAN, MICHIGAN BELL  
660 PLAZA DRIVE ROOM 1510  
DETROIT, MICHIGAN 48226

RECORDED DEC 15 1976 AT 143 P  
FOREST E. YOUNGBLOOD, Register of Deeds  
WAYNE COUNTY, MICHIGAN 48226



LOCATION SKETCH  
U. G. MAP SEC. NOS. NAN 33-2



TRANSFORMER SPECS. 1-17-261 & R-351E  
PEDESTAL SPEC. -  
NO. OF PEDESTALS 0

- CODE -

- ⊙ TEMPORARY SECONDARY PEDESTAL
- ⊠ DFT (DEAD FRONT TYPE)
- ⊡ UDT (NON-SWITCHING-LIVE FRONT TYPE)
- ⊞ UDT (SWITCHING-LIVE FRONT TYPE)
- ← DIRECTION OF TRANSFORMER DOOR OPENING
- SECONDARY PEDESTAL
- ▲ SECONDARY TERMINAL
- ⊙ CABLE POLE
- ⊞ PRIMARY SWITCH CABINET
- BURIED PRIMARY CABLE-ALL VOLTAGES
- BURIED SECONDARY CABLE
- BURIED SECONDARY SERVICE CABLE
- DETROIT EDISON TRENCH ONLY
- TELEPHONE TRENCH ONLY
- SEWER
- WATER
- GAS
- PROPOSED CONDUIT

CABLE SUMMARY

ITEM# 455 #2APEC X 1 13.2 KV 713-3029- 970'  
ITEM# 437 AP2-350M & 1-4/0 600 V. 713-0537- 370'  
ITEM# AP2-2/0 & 1-#1 600 V. 713-0614-

TRENCH SUMMARY

JOINT USE 360'  
D. E. ONLY 340'  
TEL ONLY  
TOTAL 700'

SITE SUPT. AARON KATZMEN  
PHONE NO. 548-0707

- GENERAL NOTES -

TRENCHING TO BE DONE BY D.E. Co.  
TRENCH AND CABLE LENGTHS ARE APPROXIMATE.  
SEE DRAWING UI-1-2369 FOR TRANS. MAT. DETAILS.  
SEE PAGE 32-11 (S.I.M.) DETAIL " " FOR ENTRANCE POINT DETAILS (APTS. ONLY)  
SEE DRAWING UI-4-2263 FOR PLACEMENT OF CABLES, TRANSFORMERS AND PEDESTALS (SUB'DS ONLY).  
D.E. SERVICE PLANNER: MILLENE GARRETT 295 1650 #305  
TEL. CO.: ART ADAMOWITZ 427-9950

CONTACT "MISS DIG" 800-482-7115 BEFORE DOING ANY EXCAVATION.  
EASEMENTS INDICATED BY OUR CENTERLINES ARE (6') SIX FEET IN WIDTH UNLESS OTHERWISE NOTED.

PERMITS REQUIRED

City of Garden City

TRANSFORMER DATA

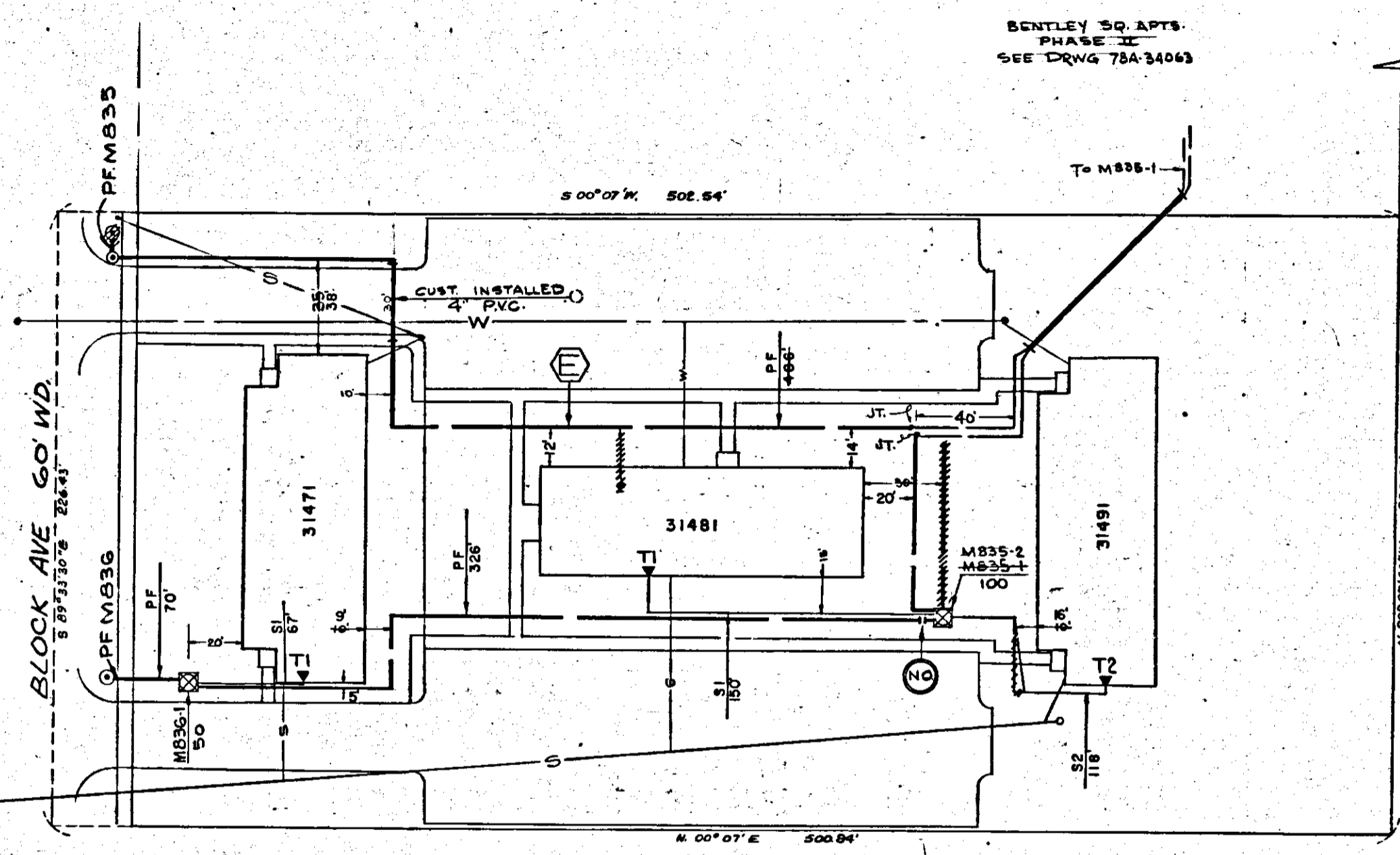
U.D.T. NO.	SIZE	ED. STK. NO.
M835-1	100	661-1153
M836-1	50	-1152

RECORDED R/W FILE NO. 36728

DEPT. ORDER: A-34680  
WORK ORDER: 367B13J939  
START: 12-16-76  
FINISH: 12-20-76  
LABOR: HEATH ENERGY INC.

S.S. BLOCK, 4 PE. MOELLER  
SE. QUAD  
TAP "X" PHASE  
SOLID BLADE

S.S. BLOCK, 3 PE. MOELLER  
SE. QUAD  
TAP "X" PHASE  
SOLID BLADE



D	REVISION	C	REVISION	B	REVISION	A	REVISION	REFERENCE
				To SERVE BENTLEY Sq. PHASE II Splice P.F. M835 Relog M835-1 to read M835-2 SEE DRWG 78A-34063		AS INSTALLED IN FIELD FOR RECORDING		
DRAWN BY	CHECKED BY	APPROVED BY	DRAWN BY	CHECKED BY	APPROVED BY	DRAWN BY	CHECKED BY	APPROVED BY

DRAWN BY Stan Zagato 9-27-76  
CHECKED BY Ed. Garrett 10-8-76  
APPROVED BY Ed. Garrett 10-8-76  
John C. Stand 10-8-76

**BENTLEY SQUARE APTS.**  
PART OF THE S.E. 1/4 OF SECTION 10, T2S., R.9E.  
GARDEN CITY  
WAYNE CO. MICH.

THE DETROIT EDISON COMPANY  
SERVICE PLANNING DEPARTMENT

SCALE 1" = 30'  
NUMBER OF UNITS 46  
WORK ORDER NUMBER 367B13J939  
LATEST REVISION "B"  
DISTRIBUTION CIRCUIT PL 580 GARDEN CITY / 132 150 JP  
DEPT. ORDER NUMBER A-34680  
SHEET 1 OF 1 SHEETS

RECORDED RIGHT OF WAY NO. 30728

30728