

(73 088422)

LIBER 6778 755

(LIBER 6178 PAGE 767)

76 88018

WELLESLEY CONDOMINIUMS

AGREEMENT - EASEMENT - RESTRICTIONS

This instrument made this 11<sup>TH</sup> day of SEPTEMBER, 19 73, by and between the undersigned Owners and THE DETROIT EDISON COMPANY, a corporation organized and existing concurrently under the laws of the states of Michigan and New York, of 2000 Second Avenue, Detroit, Michigan, 48226, hereinafter called "EDISON", and MICHIGAN BELL TELEPHONE COMPANY, a Michigan corporation, of 1365 Cass Avenue, Detroit, Michigan, 48226, hereinafter called "BELL."

2-9  
BY

WITNESSETH:

WHEREAS, Owners are erecting ~~apartments~~ <sup>condominiums</sup> known as WELLESLEY CONDOMINIUMS, on land in the Township of West Bloomfield, County of Oakland, State of Michigan, as described in Appendix "A", attached hereto and made a part hereof, and EDISON and BELL will install their electric and communication facilities underground except necessary above ground equipment.

NOW, THEREFORE, in consideration of the mutual promises and covenants for the installation of underground utility service made by the parties hereto, it is hereby agreed:

(1) The installation, ownership and maintenance of electric services and the charges to be made therefor shall be subject to and in accordance with the Orders and Rules and Regulations adopted from time to time by the Michigan Public Service Commission.

(2) Owners must certify to EDISON and BELL that the easements are graded to within four (4") inches of final grade before the underground facilities are installed.

(3) Owners further agree that if subsequent to the installation of the utility facilities of EDISON and BELL, it is necessary to repair, move, modify, rearrange or relocate any of their facilities to conform to a new plot plan or change of grade or for any cause or changes attributable to public authority having jurisdiction or to Owners action or request, Owners will pay the cost and expense of repairing, moving, rearrangement or relocating said facilities to EDISON or BELL upon receipt of a statement therefor. Further, if the lines or facilities of EDISON and BELL are damaged by acts of negligence on the part of the Owners or by contractors engaged by Owners, repairs shall be made by the utilities named herein at the cost and expense of the Owners and shall be paid to EDISON or BELL upon receiving a statement therefor. Owners are defined as those persons owning the land at the time damage occurred.

(4) Owners hereby grant to EDISON and BELL easement for electric and communication underground services in land herein described. When utility lines are installed, this instrument shall be re-recorded with an ~~as installed~~ drawing showing the location of utility facilities in relation to building lines and indicating the easements by their centerlines. Easements herein granted shall be six (6') feet in width unless otherwise indicated on said drawing. However, secondary electric service and communication entrance line locations, as shown on an installed drawing are not guaranteed; actual locations can be determined after contact with utilities.

RECORDED  
CLERK OF COURTS  
MICHIGAN  
30676

RECORDED RIGHT OF WAY NO. 30676

(5) Owners to pay the cost of conduit for electric and/or communication facilities to accomodate patios or similar site conditions.

(6) Easements herein granted are subject to the following restrictions and additional conditions:

a. Said easements shall be subject to Order of and the Rules and Regulations adopted from time to time by the Michigan Public Service Commission.

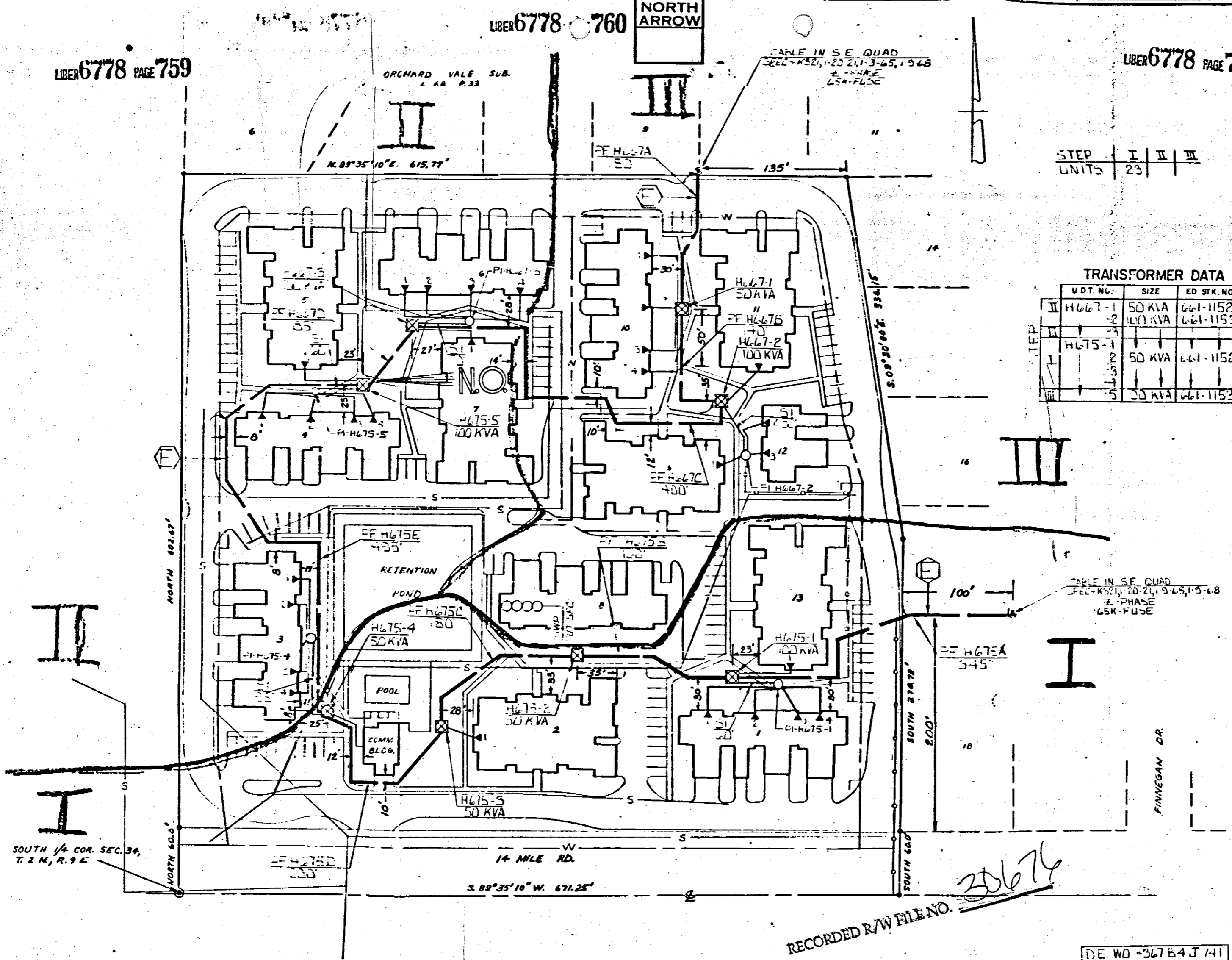
"This easement is re-recorded for purposes of showing the planned "as installed" centerlines of easements granted as shown on drawing -1- attached hereto."

DE FORM LE 11 11 71 CS

RETURN TO  
J. A. ROBERTSON  
THE DETROIT EDISON COMPANY  
1970 ORCHARD LAKE ROAD  
PONTIAC, MICHIGAN 48053

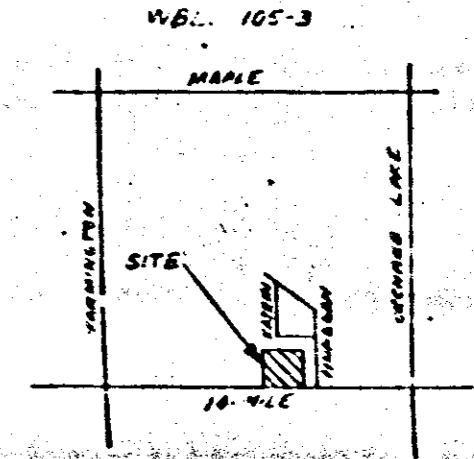
RETURN TO  
J. A. ROBERTSON  
THE DETROIT EDISON COMPANY  
30400 TELEGRAPH ROAD, 272 OAKDH  
BIRMINGHAM, MICHIGAN 48010

15.00  
900



STEP	I	II	III
UNITS	23		

UDT NO.	SIZE	ED. STK. NO.
II H667-1	50 KVA	661-1152
-2	100 KVA	661-1153
III H675-1	50 KVA	661-1152
-2	50 KVA	661-1152
-3	50 KVA	661-1153
-4	50 KVA	661-1153
-5	50 KVA	661-1153



TRANSFORMER SPECS - 52-370E-117-261  
 PEDESTAL SPEC - R13 1-0-231  
 NO. OF PEDESTALS - 5

- CODE -

- TEMPORARY SECONDARY PEDESTAL
- DFT (DEAD FRONT TYPE)
- ▣ UDT (NON-SWITCHING-LIVE FRONT TYPE)
- ⊠ UDT (SWITCHING-LIVE FRONT TYPE)
- DIRECTION OF TRANSFORMER DOOR OPENING
- SECONDARY PEDESTAL
- ▲ SECONDARY TERMINAL
- CABLE POLE
- PRIMARY SWITCH CABINET
- BURIED PRIMARY CABLE-ALL VOLTAGES
- BURIED SECONDARY CABLE
- BURIED SECONDARY SERVICE CABLE
- DETROIT EDISON TRENCH ONLY
- TELEPHONE TRENCH ONLY
- SEWER
- WATER
- GAS
- PROPOSED CONDUIT

CABLE SUMMARY

ITEM #	DESCRIPTION	LENGTH
1	2APEC X 113.2 KV	713.3029
2	AP2-350M @ 140 600 V.	713.0378
3	AP2-20 @ 181 600 V.	713.0614

TRENCH SUMMARY

JOINT USE	LENGTH
D. E. ONLY	100'
TEL. ONLY	315'
TOTAL	415'

SITE SUPT. JOHN CASEY  
 PHONE NO. 858-8410

- GENERAL NOTES -

- TRENCHING TO BE DONE BY W.B.T.
- TRENCH AND CABLE LENGTHS ARE APPROXIMATE
- SEE DRAWING UI-12369 FOR TRANS. MAT. DETAILS
- SEE PAGE 3-2-11 (S1M) DETAIL "3" FOR ENTRANCE POINT DETAILS (APTS. ONLY)
- SEE DRAWING UI-42263 FOR PLACEMENT OF CABLES TRANSFORMERS AND PEDESTALS (SUB'S ONLY)
- D. E. SERVICE PLANNER: 3040 EXT 75-229
- TEL. CO. 557-2121-542-9915

CONTACT "MISS DIG" (6477344) BEFORE DOING ANY EXCAVATION. EASEMENTS INDICATED BY OUR CENTERLINES ARE (6) SIX FEET IN WIDTH UNLESS OTHERWISE NOTED.

PERMITS REQUIRED  
 WEST BLOOMFIELD TWP

RECORDED R/W FILE NO. 30676

DE WD 36764J/41  
 DE DD 4A-63500  
 MBT JOE 1052

1ST CIR 8129 DAVIS-132 KV

D	C	B	A	REFERENCE	DATE	STATION
			AS-INSTALLED IN FIELD		8-7-73	
			STEP ONE (I) ONLY		9-15-73	
					9-16-73	

MADE BY	CHK BY	APPROVED	DATE	MADE BY	CHK BY	APPROVED	DATE	MADE BY	CHK BY	APPROVED	DATE	MADE BY	CHK BY	APPROVED	DATE

THE DETROIT EDISON COMPANY		SERVICE PLANNING DEPARTMENT	
SCALE	LAYOUT JOB NO.		
1" = 50'			
DRAWING NUMBER		SHEET 1 OF 1 SHEETS	
A-63500			

RETURN TO  
J. A. ROBERTSON  
THE DETROIT EDISON COMPANY  
30400 TELEGRAPH ROAD, 272 OAKDA  
BIRMINGHAM, MICHIGAN 48010

22929

RECORDED RIGHT OF WAY NO. 30676