

73 057228  
RECEIVED 88020  
76 MAY 18 1973

LAUREL CLUB PHASE II  
APARTMENTS

LIBER 6778 PAGE 770

2.9  
23

AGREEMENT - EASEMENT - RESTRICTIONS

This instrument made this 21<sup>ST</sup> day of MAY, 19 73, by and between the undersigned Owners and THE DETROIT EDISON COMPANY, a corporation organized and existing concurrently under the laws of the states of Michigan and New York, of 2000 Second Avenue, Detroit, Michigan, 48226, hereinafter called "EDISON", and MICHIGAN BELL TELEPHONE COMPANY, a Michigan corporation, of 1365 Cass Avenue, Detroit, Michigan, 48226, hereinafter called "BELL."

W I T N E S S E T H :

WHEREAS, Owners are erecting apartments known as LAUREL CLUB PHASE II, on land in the Township of West Bloomfield, County of Oakland, State of Michigan, as described in Appendix "A", attached hereto and made a part hereof, and EDISON and BELL will install their electric and communication facilities underground except necessary above ground equipment.

NOW, THEREFORE, in consideration of the mutual promises and covenants for the installation of underground utility service made by the parties hereto, it is hereby agreed:

(1) The installation, ownership and maintenance of electric services and the charges to be made therefor shall be subject to and in accordance with the Orders and Rules and Regulations adopted from time to time by the Michigan Public Service Commission.

(2) Owners must certify to EDISON and BELL that the easements are graded to within four (4") inches of final grade before the underground facilities are installed.

(3) Owners further agree that if subsequent to the installation of the utility facilities of EDISON and BELL, it is necessary to repair, move, modify, rearrange or relocate any of their facilities to conform to a new plot plan or change of grade or for any cause or changes attributable to public authority having jurisdiction or to Owners action or request, Owners will pay the cost and expense of repairing, moving, rearrangement or relocating said facilities to EDISON or BELL upon receipt of a statement therefor. Further, if the lines or facilities of EDISON and BELL are damaged by acts of negligence on the part of the Owners or by contractors engaged by Owners, repairs shall be made by the utilities named herein at the cost and expense of the Owners and shall be paid to EDISON or BELL upon receiving a statement therefor. Owners are defined as those persons owning the land at the time damage occurred.

(4) Owners hereby grant to EDISON and BELL easement for electric and communication underground services in land herein described. When utility lines are installed, this instrument shall be re-recorded with an "as installed" drawing showing the location of utility facilities in relation to building lines and indicating the easements by their centerlines. Easements herein granted shall be six (6') feet in width unless otherwise indicated on said drawing. However, secondary electric service and communication entrance line locations, as shown on an installed drawing are not guaranteed; actual locations can be determined after contact with utilities.

(5) Owners to pay the cost of conduit for electric and/or communication facilities to accomodate patios or similar site conditions.

(6) Easements herein granted are subject to the following restrictions and additional conditions:

- a. Said easements shall be subject to Order of and the Rules and Regulations adopted from time to time by the Michigan Public Service Commission.

"This easement is re-recorded for purposes of showing the planned "as installed" centerlines of easements granted as shown on drawing attached hereto."

15.00  
9.00

RECORDED RIGHT OF WAY NO. 30671

TRANSFORMER DATA

U.D.T. NO.	SIZE	ED STA. NO.
H403-1	50 KVA	221/112
H403-2	100 KVA	221/112

TRANSFORMER SPECS. 117-261  
 PEDESTAL SPEC. - R13  
 NO. OF PEDESTALS - 2

- CODE -
- ⊙ TEMPORARY SECONDARY PEDESTAL
  - ⊠ DFT (DEAD FRONT TYPE)
  - ⊡ UDT (NON SWITCHING LIVE FRONT TYPE)
  - ⊣ UDT (SWITCHING LIVE FRONT TYPE)
  - DIRECTION OF TRANSFORMER DOOR OPENING
  - SECONDARY PEDESTAL
  - △ SECONDARY TERMINAL
  - ⊕ CABLE POLE
  - ⊞ PRIMARY SWITCH CABINET
  - BURIED PRIMARY CABLE ALL VOLTAGES
  - BURIED SECONDARY CABLE
  - BURIED SECONDARY SERVICE CABLE
  - DETROIT EDISON TRENCH ONLY
  - TELEPHONE TRENCH ONLY
  - SEWER
  - WATER
  - GAS
  - PROPOSED CONDUIT

CABLE SUMMARY

ITEM #	#2APEC X 1 132 KV	713 3029	30'
ITEM #	AP2 350M & 140 600 V	713 0637	25'
ITEM #	AP2 20 & 1 #1 600 V	713 0614	

TRENCH SUMMARY

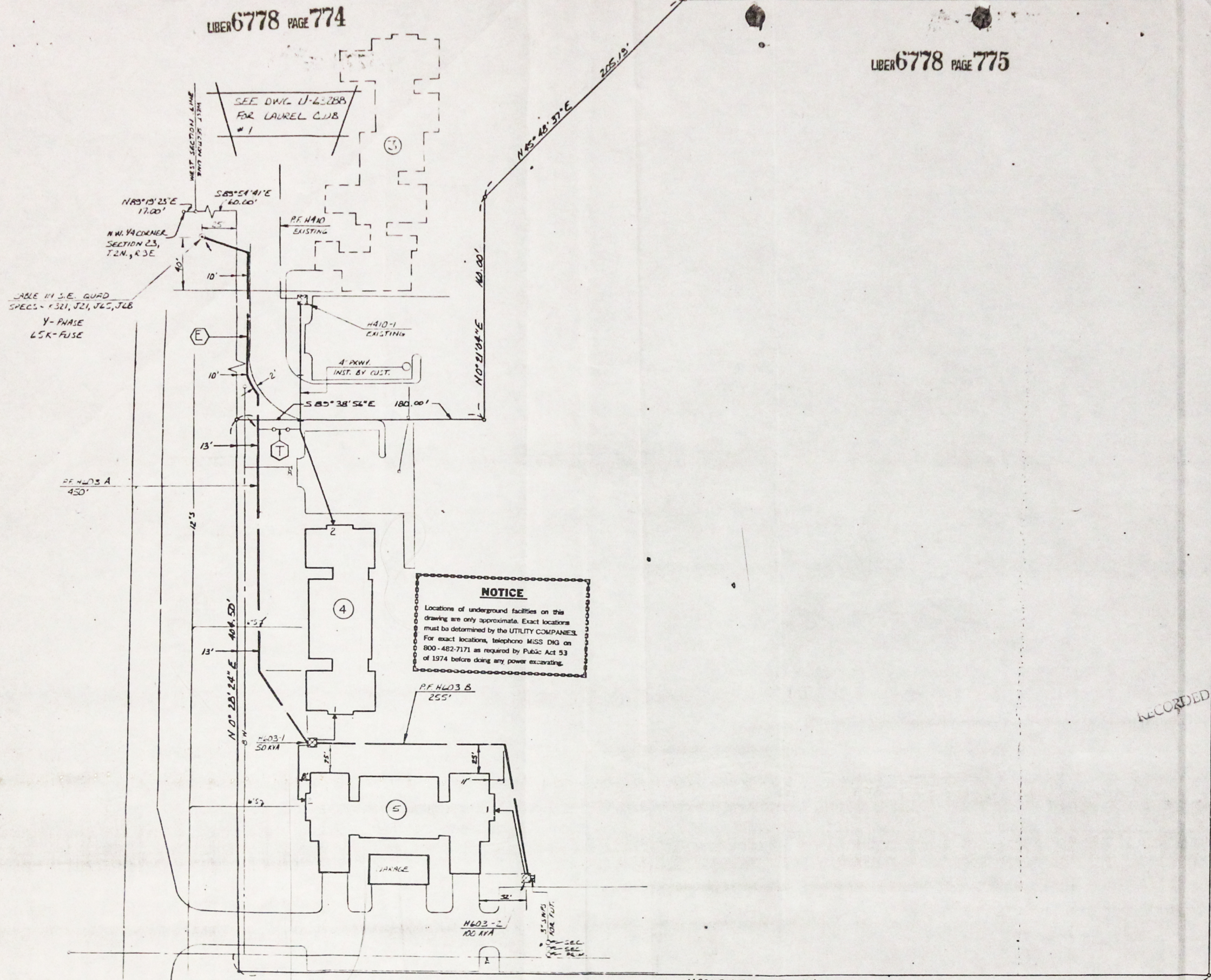
JOINT USE	75'
D. E. ONLY	165'
TEL ONLY	50'
TOTAL	300'

SITE SUPT. A MEYERSON  
 PHONE NO. 542 9930

- GENERAL NOTES -  
 TRENCHING TO BE DONE BY M.E.T. CO.  
 TRENCH AND CABLE LENGTHS ARE APPROXIMATE  
 SEE DRAWING U-12369 FOR TRANS. MAT DETAILS  
 SEE PAGE 32 (15) M.I. DETAIL "D" FOR ENTRANCE  
 POINT DETAILS (APTS ONLY)  
 SEE DRAWING U-12369 FOR PLACEMENT OF CABLES  
 DE SERVICE PLANNER M.P.L. 241-25 25 307  
 TEL. CO. 464-2411

CONTACT "MISS DIG" (647) 3441 BEFORE  
 DOING ANY EXCAVATION  
 EASEMENTS INDICATED BY OUR CENTERLINES ARE 16'  
 SIX FEET IN WIDTH UNLESS OTHERWISE NOTED

PEP'S REQUIRED  
 WEST BLOOMFIELD TWP



30671  
 RECORDED R/W FILE NO.

NO.	REVISION	DATE	BY	APP'D.	DESCRIPTION
1	AS-INSTALLED IN FIELD	6/12/73	BAKLEY		SEE DWG. U-63288 FOR LAUREL CLUB #1
2		6/25/73			
3		6/25/73			

NO.	REVISION	DATE	BY	APP'D.	DESCRIPTION
1	STEP I	6/12/73	BAKLEY		LAUREL CLUB CONDOMINIUM PHASE II
2	STEP II	6/25/73			PART OF SEC. 14 & 23, T2N, R.3E.
3		6/25/73			WEST BLOOMFIELD TWP. ORLAND CO.

SCALE	NUMBER OF UNITS	WORK ORDER NUMBER
1"=50'	10	U-63448