

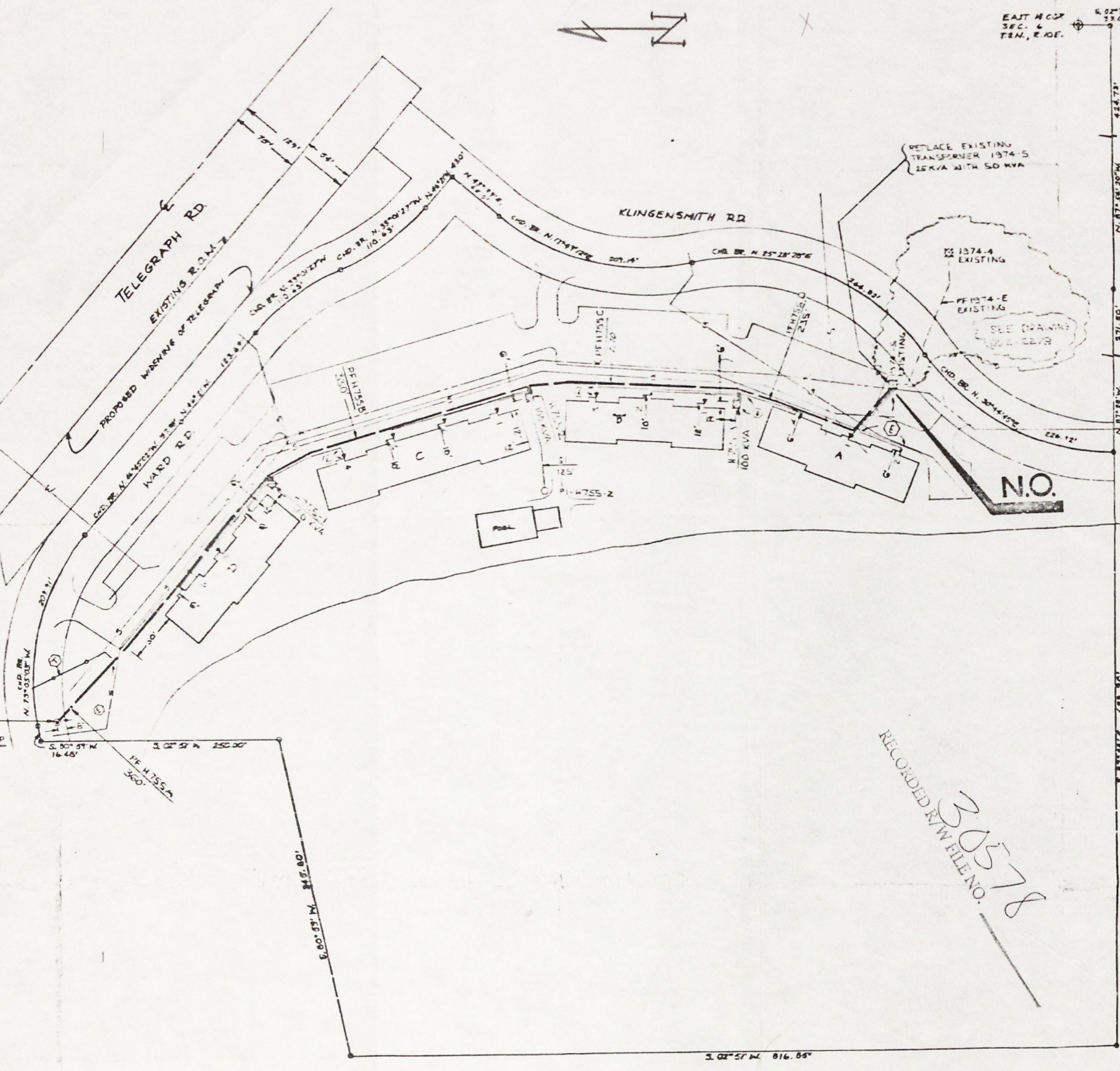
MEMORANDUM ORDER  
FOR GENERAL USE  
DE FORM 85 77 12-53

TO Engineering Coordinator Supervisors TE 1-25-74 TIME \_\_\_\_\_  
Bldg. .. - Room 250 W.S.C.

Re: Underground Service - SQUARE LAKE APT'S. - BLOOMFIELD TWP., - OAK. Co.  
Agreements and Easements obtained - OK to proceed with construction.

COPIES TO: R. Bond - OAK. S.P. SIGNED John N. Waterloo  
John N. Waterloo  
REPORT \_\_\_\_\_ Real Estate and R/W Department

DATE RETURNED \_\_\_\_\_ TIME \_\_\_\_\_ SIGNED \_\_\_\_\_



**TRANSFORMER DATA**

UDT NO	SIZE	ED-944-160
H 755-1	100 KVA	
-2	100 KVA	
-3	100 KVA	
1314-5	50 KVA	

TRANSFORMER SPECS 1-52-370 E  
 1-15-201, 1-11-164  
 PEDESTAL SPEC 1-3-231  
 NO. OF PEDESTALS 1

- CODE -**
- ⊙ TEMPORARY SECONDARY PEDESTAL
  - ⊠ DFT (DEAD FRONT TYPE)
  - ⊡ DFT (NON SWITCHING-LIVE FRONT TYPE)
  - ⊞ DFT (SWITCHING-LIVE FRONT TYPE)
  - DIRECTION OF TRANSFORMER DOOR OPENING
  - SECONDARY PEDESTAL
  - ▲ SECONDARY TERMINAL
  - ⊙ CABLE POLE
  - ⊠ PRIMARY SWITCH CABINET
  - BURIED PRIMARY CABLE-ALL VOLTAGES
  - BURIED SECONDARY CABLE
  - BURIED SECONDARY SERVICE CABLE
  - DETROIT EDISON TRENCH ONLY
  - TELEPHONE TRENCH ONLY
  - SEWER
  - WATER
  - GAS
  - PROPOSED CONDUIT

**CABLE SUMMARY**

ITEM #	DESCRIPTION	QUANTITY	UNIT
125' SEC MAIN	#2APEC X 1 132 KV	713.3029	1.155
1535 SEC SER	#7 350M & 140 800 V	713.0537	1.650
	#2 20 & 1-1-1 400 V	713.0814	

**TRENCH SUMMARY**

ITEM	QUANTITY	UNIT
JOINT USE	1.150	
D. E. ONLY	21.0	
TEL ONLY	1.00	
<b>TOTAL</b>	<b>23.15</b>	

SITE SUPT. MARIO CARDINALI  
 PHONE NO. 353-7979

**- GENERAL NOTES -**

TRENCHING TO BE DONE BY MBT CO.  
 TRENCH AND CABLE LENGTHS ARE APPROXIMATE  
 SEE DRAWING UH-2300 FOR TRANS. MAT. DETAILS  
 SEE PAGE 32 (11.51 M) DETAIL "D" FOR ENTRANCE POINT DETAILS (APTS ONLY)  
 SEE DRAWING ED-4282 FOR PLACEMENT OF CABLES, TRANSFORMERS AND PEDESTALS (JUBS ONLY)  
 D.E. SERVICE PLANNER ALPHA COND 414-3040 EXT 75 51  
 TEL. CO. J. CHAMBERLAIN 353-0545

CONTACT "MISS DIG" (6477.344) BEFORE DOING ANY EXCAVATION  
 EASEMENTS INDICATED BY OUR CENTERLINES ARE 18' SIX FEET IN WIDTH UNLESS OTHERWISE NOTED.

**PERMITS REQUIRED**  
 TWP OF BLOOMFIELD

START DATE JAN 7, 1974

RECORDED R/W FILE NO. 30578

D	C	B	A	REFERENCE	DATE	JOB TITLE	THE DETROIT EDISON COMPANY
			AS-INSTALLED IN FIELD	00-2-227B	12-5-73	SQUARE LAKE APARTMENTS PART OF THE E. 1/2 OF SEC. 6, T.2N., R.10E., BLOOMFIELD TWP AKLAND CO. MICHIGAN	SERVICE PLANNING DEPARTMENT SCALE 1"=50' LATEST REVISION 1967 IVANHOE 150-UP 1324 DEPT. ORDER NUMBER A-623635 SHEET 1 OF 1 SHEETS

30578

RECORDED RIGHT OF WAY NO. 30578

RETURN TO  
J. A. ROBERTSON  
THE DETROIT EDISON COMPANY  
30400 TELEGRAPH ROAD, 272 OAKDALE  
DETROIT, MICHIGAN 48210