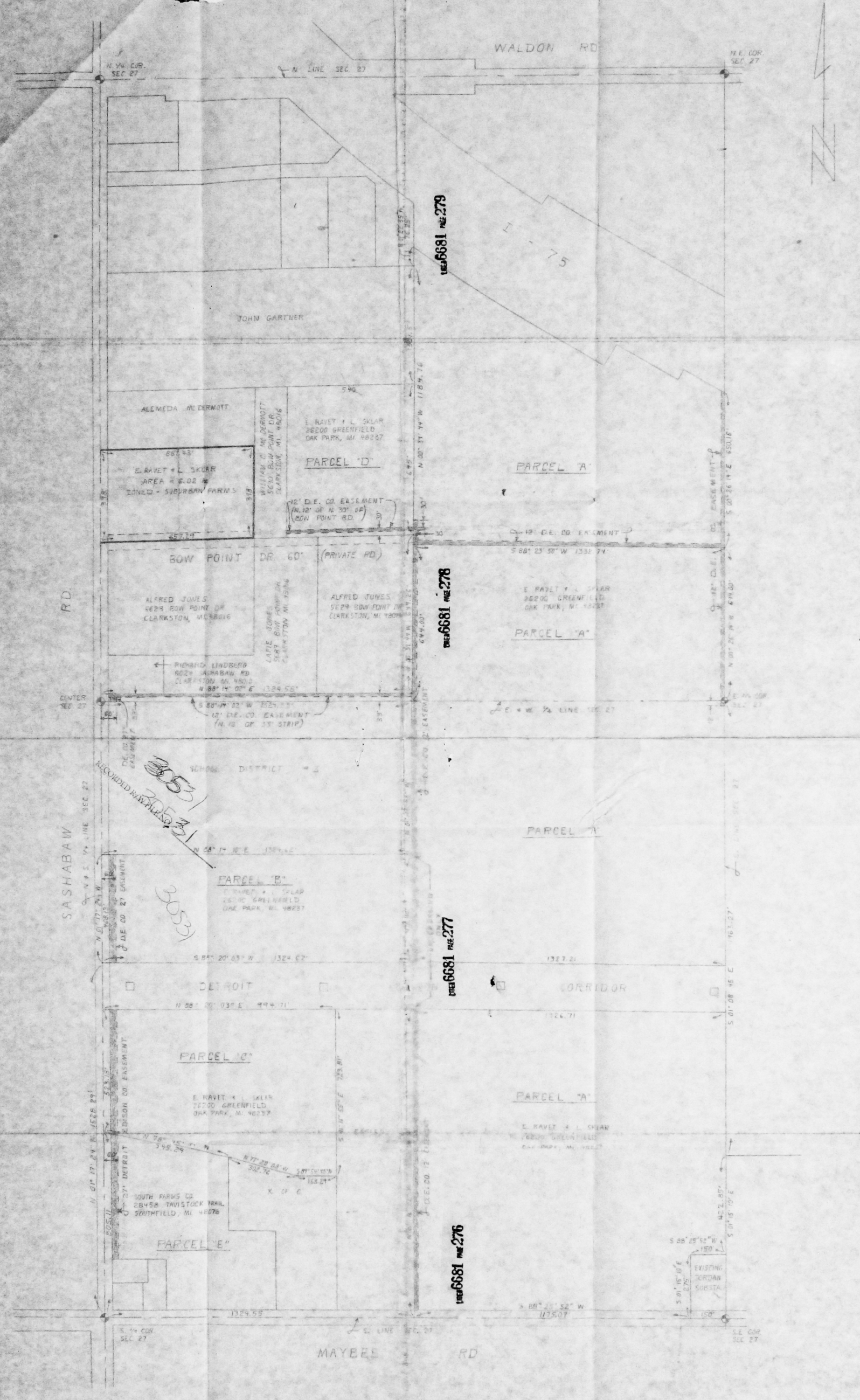


6681 275

6681 274

6681 273

6681 272



REVISION "B" 1-8-75 RELOCATED EASEMENT ACROSS PARCEL "A" ADDED DIMENSIONS AND PARCEL D-E LETTERS	REVISION "A" 10-21-75 RELOCATED EASEMENT AND ADDED DIMENSIONS INCLUDED "S" OF STATION SITE	PROPOSED SITE FOR OASIS STATION 120KV / 132KV INDEPENDENCE TWP. OAKLAND CO.	APPROVED LAYOUT BY A.A. KENT DATE 4-10-74 SCALE 1" = 200'	DRAWN BY M. SCHWARTZ CHECKED BY H74-021B
---	--	--	---	---

SITE #1

THE DETROIT EDISON COMPANY
GENERAL ENGINEERING DEPARTMENT

DATE 4-10-74

SCALE 1" = 200'

H74-021B

DE FORM 28 (1970, 4-74)

RECORDED RIGHT OF WAY NO. 30527/31

30531