

STATE OF MICHIGAN

Office of the Michigan Public Utilities Commission, } ss.

I, **Albert A. Wagner**, Secretary of the Michigan Public Utilities Commission

Do Hereby Certify, That I have compared the annexed copy of **ED2-8-861**

with the original

recorded in **File ED2-8-861**

and that it is a true and correct transcript therefrom, and of the whole of such original.

In Testimony Whereof, I have hereunto set my hand and affixed
the seal of the Commission, at Lansing, this **28th**
day of **February** in the year of our Lord
one thousand nine hundred **thirty-nine.**

Albert A. Wagner
Secretary Michigan Public Utilities Commission

24696

4696
30190
p62

THE DETROIT EDISON CO.
 PLAN SUBMITTED TO MICHIGAN PUBLIC UTILITIES COMMISSION
 FOR
 OVERHEAD LINE CROSSING

RX 1036A

OVER DETROIT & IRONTON (SPRING) SECTION PC-1411 R R
IN ALLEY EAST OF MAIN LINE AND NORTH OF CLARENCE AVE
 CITY OF MELVINDALE TOWNSHIP 1 R WYCKE COUNTY

CIRCUITS.				CONDUCTORS			
NUMBER	VOLTAGE	CYCLES	PHASE	USE	WIRES	SIZE	KIND
ONE	120/240	60	1A3	DMT	4	#2	HIBOND SOLID COPPER

LOCATION	LENGTH	MATERIAL	MIN CIRCUMFERENCE DEPTH OF		KIND OF SETTING
			AT TOP	AT GROUND	
A	35'	WESTERN CLEAR	22"	38"	6" O" CLEAR SOL
B	40'		25"	43"	1.0"
C	40'		23"	42"	6.0"

NOTE

MATERIALS SHALL BE AS NOTED IN THE DETROIT EDISON COMPANY'S STANDARD SPECIFICATIONS FOR OVERHEAD LINE CONSTRUCTION AT RAILROAD CROSSINGS ISSUED DECEMBER 23, 1935.

PURPOSE OF LINE

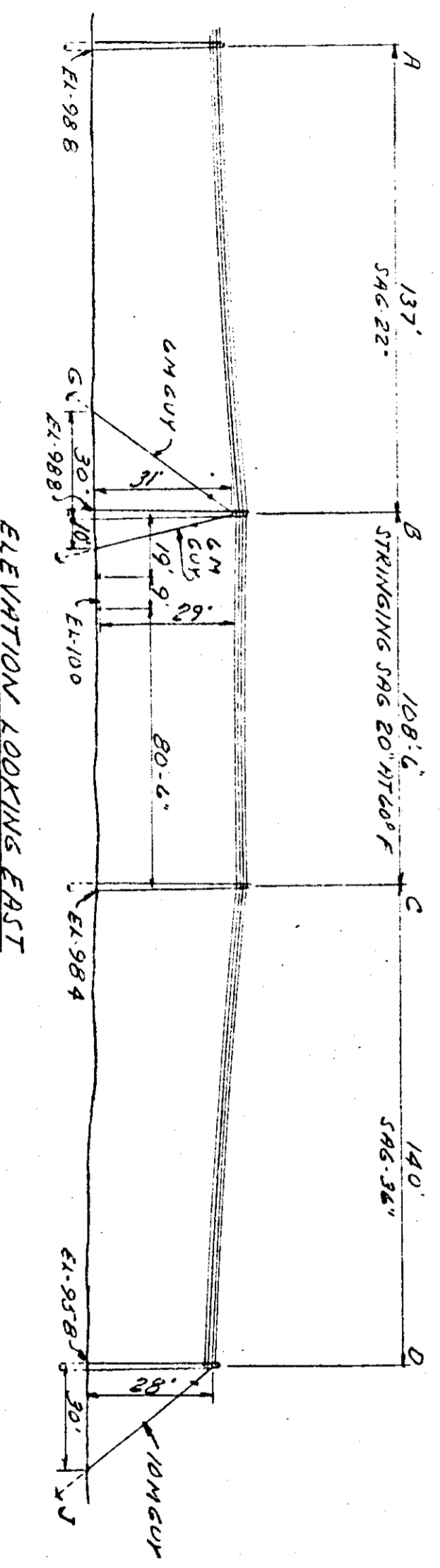
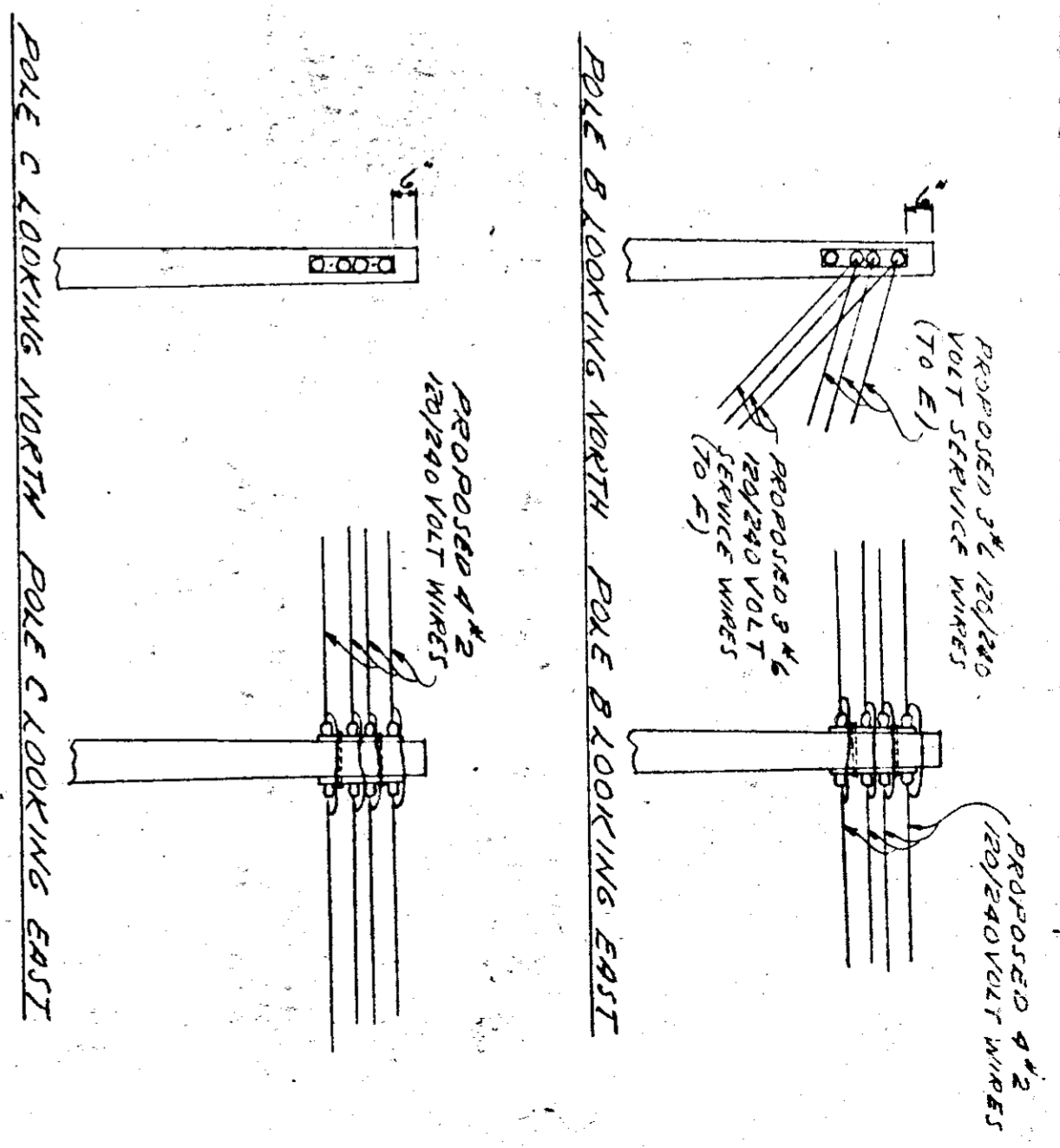
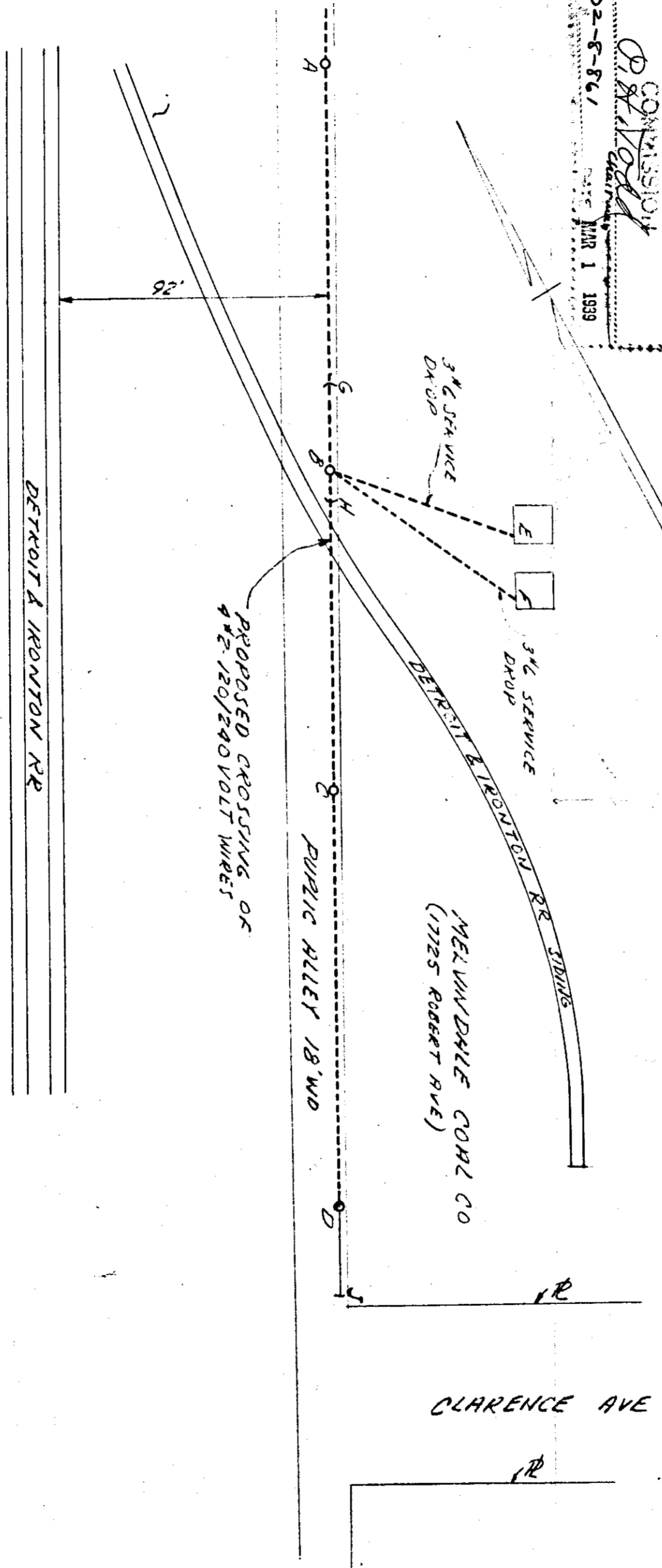
REPLACE 3# 4.5% VOLT WIRES WITH 4# 2.120/240 VOLT WIRES

EXISTING OVERHEAD LINE 4.5% 22" WITH 4# 2.120/240 VOLT WIRES

DRAWN BY W. MADALE 2/22 RECEIVED BY DATE 2-17-39

MICHIGAN PUBLIC UTILITIES COMMISSION
 P. B. MADALE
 SD-5-861 MAR 1 1939

RECEIVED
 MICHIGAN PUBLIC UTILITIES COMMISSION
 FEB 24 1939
 AND



DRAFTING & SURVEYING BUREAU RX 1036A

30190 P62

ANDERZAK DETROIT

RECORDED RIGHT OF WAY NO. 30190
p. 62

8-8-86
P. 62
P. 62