

RAILROAD RIGHT OF WAY

**DOCUMENT(S) WILL BE SCANNED
AT A LATER TIME**

RECORDED RIGHT OF WAY NO. 12191 P11

THE DETROIT EDISON COMPANY
OVERHEAD TRANSMISSION LINES
FROM RIVER ROUGE PLANT
ACROSS ZUG ISLAND
TO DETROIT

L12601-A-308

LEGEND
SALT WELLS
TOWERS
UNDERGROUND
TERMINAL

SCALE 1"=200'

ED-1457



L12601-A-309

L12601PA311

IA TO IB = 600 SOLVAY PROCESS CO.
IB TO IC = 375 DELRAY CONNECTING RR
IC TO ID = 500' D.T. & I. RR R/W
ID TO IE = 350' SOLVAY PROCESS CO.

IIA TO IIB = 460' SOLVAY PROCESS CO.
IIB TO IIC = 4020' D.T. & I. R.P. R/W

IIIA TO IIIB = 450 SOLVAY PROCESS CO.
IIIB TO IIIC = 83' D.T. & I. RR R/W
IIIC TO IIID = 2116' SOLVAY PROCESS CO.

L12601PA310

BRADY (ZUG) ISLAND P.C. 45

RETURN TO
RICHARD H. TAYLOR
The Detroit Edison Company
1000 SECOND AVENUE
DETROIT 26, MICHIGAN

THE SOLVAY PROCESS COMPANY
77.43 ACRES

10' EASEMENT FOR
D.T. & I. CO.

POINT IE IS THE TERMINUS OF LINE
COVERED BY THIS GRANT, AND POINT
OF BEGINNING OF LINE COVERED
BY SEPARATE GRANT.

DELRAY CONNECTING RAILROAD CO.
29.57 ACRES

THE SOLVAY PROCESS CO.

THE SOLVAY PROCESS CO. ROADWAY

HANNA FURNACES

GENERAL CHEMICAL
SHORTCUT CANAL
PROJECT TO BE SET

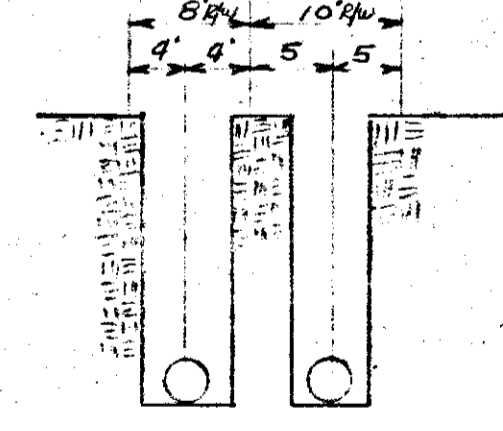
DETROIT SOLVENT PUMP & WAXER CO.

DETROIT SOLVENT PUMP & WAXER CO.

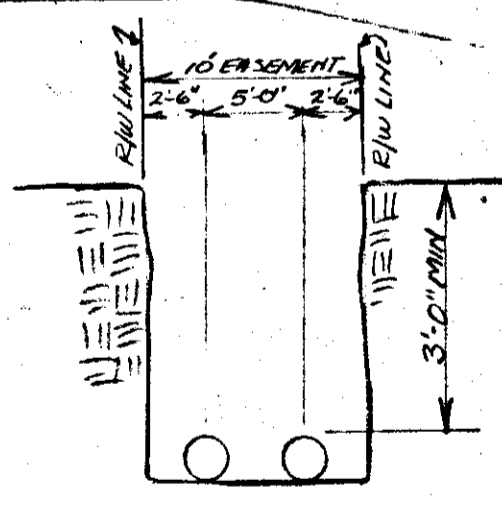
THE SOLVAY PROCESS CO.

CITY OF DETROIT
BRIDGE STREET

D.T. & I. RR SOLVAY PROCESS

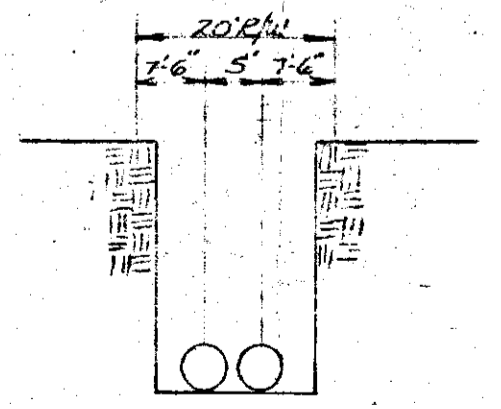


SECTION 4-4

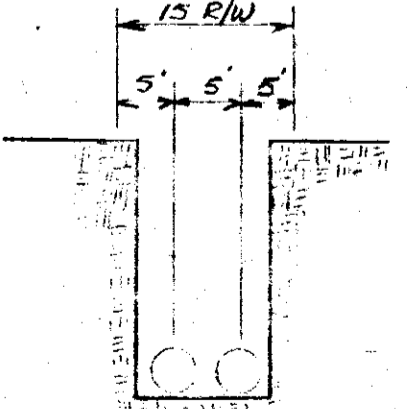


SECTION B-B

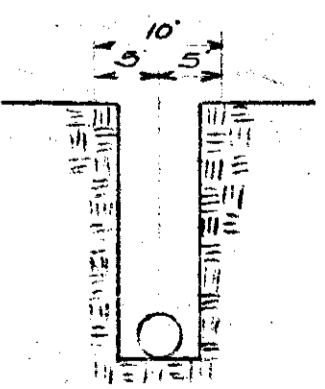
3" 45° O.D. COPPER TUBE
C.O.H. TOWER
UNDERGROUND TERMINAL SEE SKETCH ED 1434



SECTION 1-1



SECTION 2-2



SECTION 3-3

CODE
PROPOSED 8 3/4" O.D. PIPE = ---
PROPOSED MANHOLES = □
PROPOSED OVERHEAD TOWERS = ⊠

REFERENCE DRAWING D.T. & I. C.E. 4-1-11-141

NOTE REVISIONS—RETURN TO UNDERGROUND LINES DEPARTMENT ALL PRINTS MADE PREVIOUS TO LAST REVISION
ADDED SECTIONS 1-1, 2-2, 3-3, 4-4
REMOVED 2 LINES, RELOCATED LINE #3
ADDED C.O.H. TOWERS
DATE 4-16-54
APPROVED BY [Signature]

BILL OF MATERIAL NO.
NOTE TO SHOP—ALL DETAILS TO BE SHOWN ON BLUEPRINT.
WITH DETAILS OR MARK NUMBERS AS SHOWN ON BLUEPRINT.

REFERENCE	NAME	DATE	NAME	DATE
MP 3581	[Signature]	[Date]	[Signature]	[Date]
	[Signature]	10-2-54	[Signature]	[Date]

CITY OF RIVER BOUSE
ZUG ISLAND FROM SHORTCUT CANAL
JEFFERSON AVE. IN CITY OF DETROIT

THE DETROIT EDISON COMPANY
UNDERGROUND LINES DEPT.
DETROIT, MICHIGAN
USE DIMENSIONS ONLY
SCALE 1" = 100'
PRINTED
01-3-1705-A

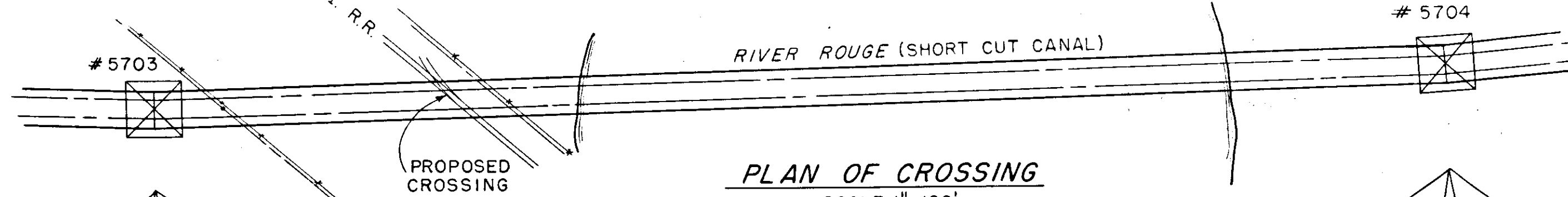
RIGHT OF WAY FILE No. 12171
Part 11.

RIGHT OF WAY FILE No. 12171
Part 11.

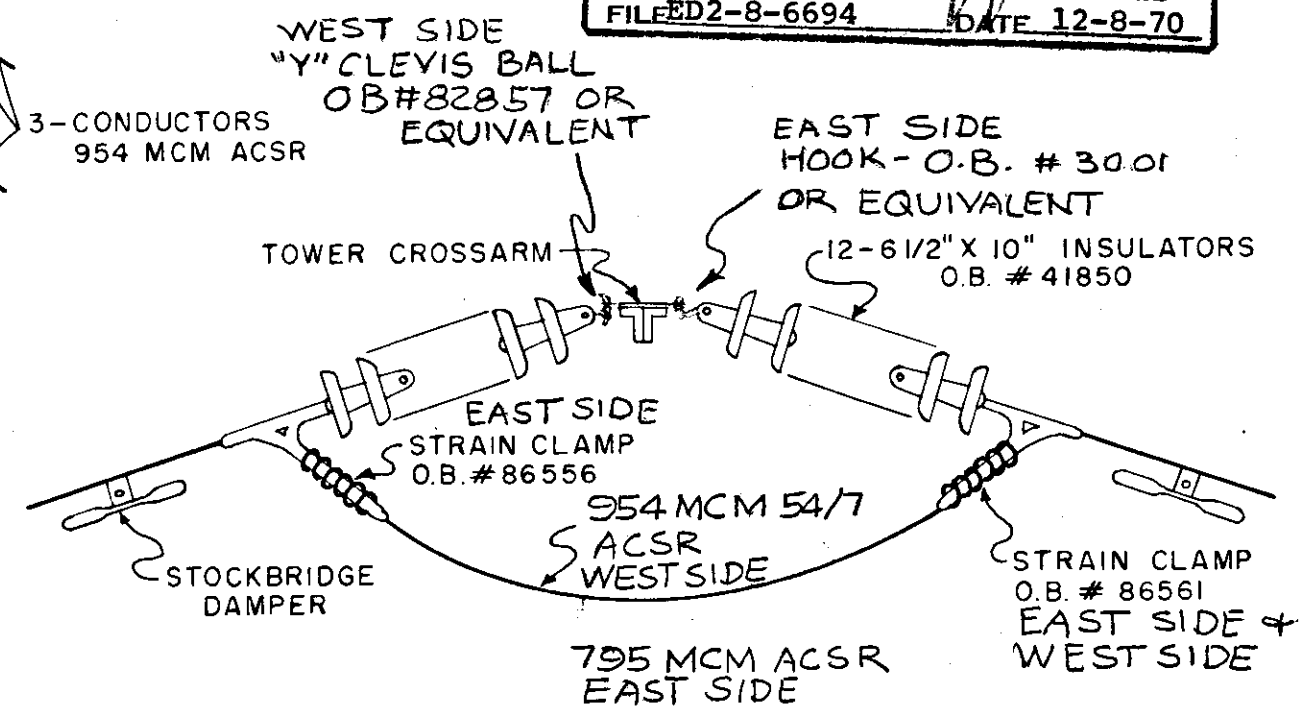
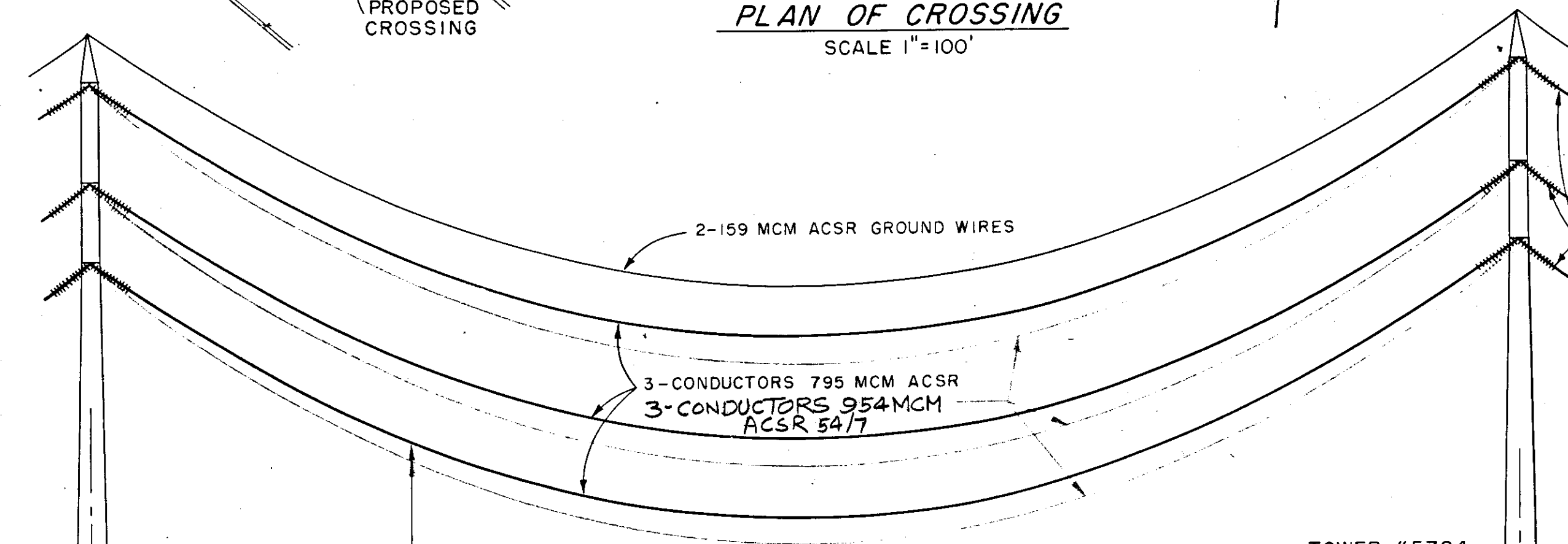
RETURN TO
RICHARD H. TAYLOR
The Detroit Edison Company
2000 SECOND AVENUE
DETROIT 26, MICHIGAN

RIVER ROUGE-FLEETWOOD-ALFRED 120KV CIRCUIT (EAST SIDE)

RIVER ROUGE-MAXWELL 120KV CIRCUIT (WEST SIDE)



APPROVED
FOR
MICHIGAN PUBLIC SERVICE
[Signature]
DIRECTOR OF PUBLIC UTILITIES
FILED 2-8-6694 DATE 12-8-70



TOWER #5703 TYPE LA-205
ADJACENT TOWER #5702
ELEV. 96.6'
SPAN 1224'
SAG INITIAL 34.6 } @ 60°F
FINAL 36.8 }
EAST SIDE 795 MCM ACSR 12000 #H.L.T.
WEST SIDE SAG INITIAL 39.3 } @ 60°F
FINAL 42.6 }
954 MCM 54/7 ACSR 12000 #H.L.T.

TOWER #5704 TYPE LA-205
ADJACENT TOWER #5705
ELEV. 97.4'
SPAN 1471'
SAG INITIAL 58.3 } @ 60°F
FINAL 61.7 }
WEST SIDE SAG INITIAL 38.4 } @ 60°F
FINAL 41.7 }
EAST SIDE 795 MCM ACSR 12000 #H.L.T.
WEST SIDE 954 MCM 54/7 ACSR 12000 #H.L.T.

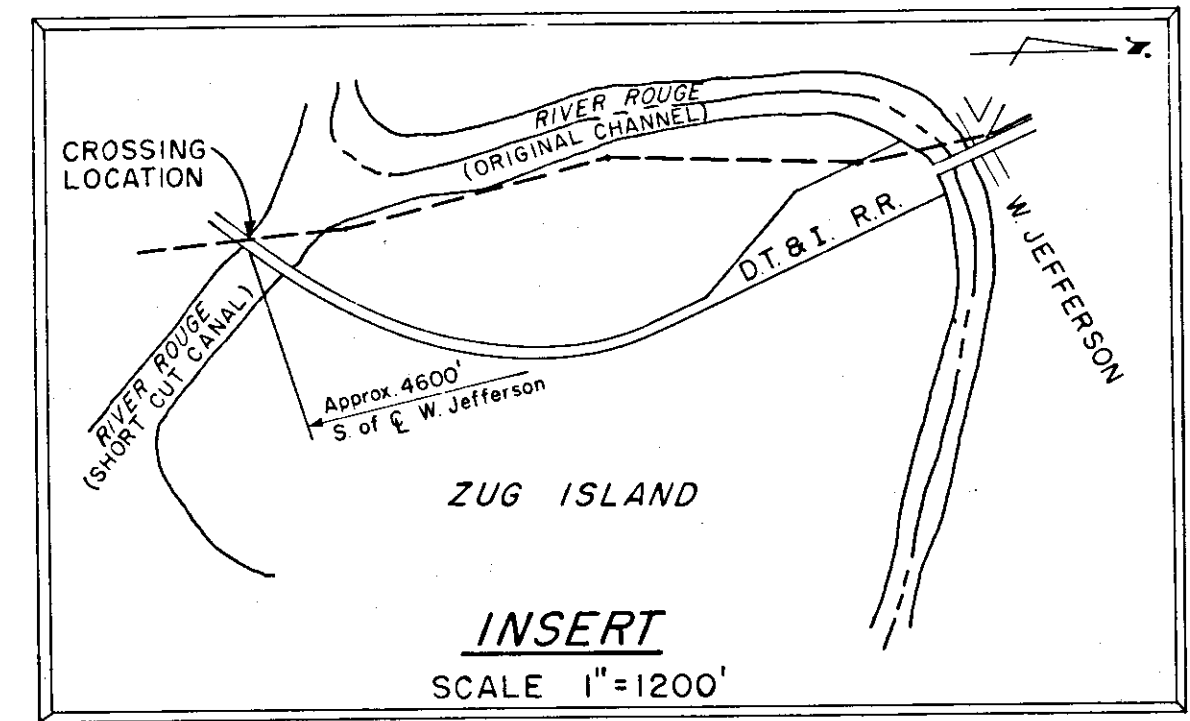
1211' SPAN
SAG INITIAL 34.2 } @ 60°F
FINAL 36.8 }
EAST SIDE 795 MCM ACSR 12000 #H.L.T.
WEST SIDE SAG INITIAL 38.4 } @ 60°F
FINAL 41.7 }
954 MCM 54/7 ACSR 12000 #H.L.T.

2-159 MCM ACSR GROUND WIRES
3-CONDUCTORS 795 MCM ACSR
3-CONDUCTORS 954 MCM ACSR 54/7

178.9' @ 60°F 795 MCM
175.4' @ 60°F 954 MCM

ELEV. 95.4' ELEV. 100' ELEV. 98.1'

WATER LEVEL



REVISED 11-20-70

THE DETROIT EDISON COMPANY
PLAN SUBMITTED TO MICHIGAN
PUBLIC UTILITIES COMMISSION
FOR 120,000 VOLT CROSSING
OVER THE D.T.B.I. R.R.
DRAWN BY HD/DLB DATE 8-9-56
CHECKED BY *[Signature]* DATE 11-2-56

PERMIT NO. **RX-3251A**

COUNTY WAYNE
CITY RIVER ROUGE

ELEVATION OF CROSSING
SCALE HORIZONTAL 1"=100'
VERTICAL 1"=20'

RECORDED RIGHT OF WAY NO. 12171
P 11